



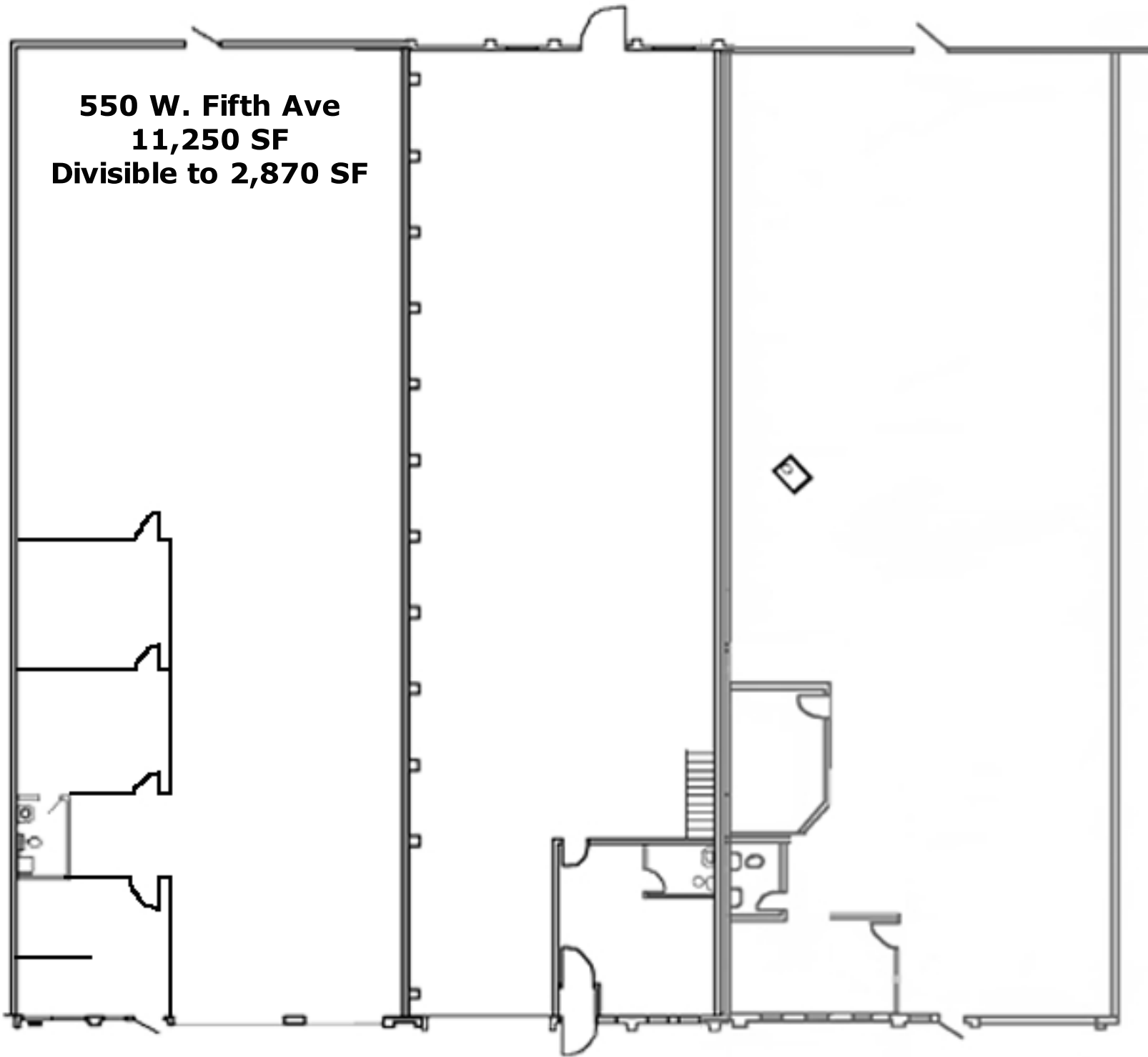
EXPERT  
PLUMBING  
579-1996

Flow Testing  
& Hooding  
& Clearing  
Sewer  
Systems  
More

#564

#566

**550 W. Fifth Ave**  
**11,250 SF**  
**Divisible to 2,870 SF**







NO  
STORAGE

NO  
STORAGE













All outstanding in  
this office when you  
are gone.

It is up to you and  
your supervisor to  
ensure that all  
work is completed  
in a timely manner.

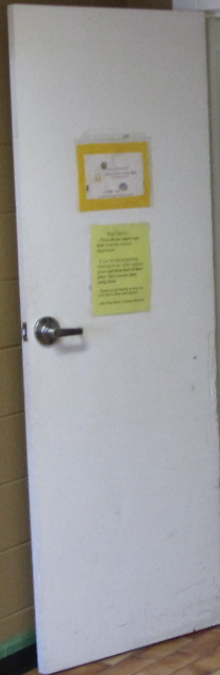
LOOK AT PLANNING  
ON THIS DATE  
EVERY CONTRACTOR  
AN EMERGENCY  
ON MY PAGE

PLEASE ADVISE ME OF ANY  
CHANGES TO THE PLAN  
AS SOON AS POSSIBLE  
AND BEFORE THE  
START OF THE WORK  
ON THE DATE  
OF THE PLAN  
ON THE DATE  
OF THE PLAN



CLIPBOARD WITH PAPER





ITEM:



NO CONTAMINATED  
ITEMS PAST THIS AREA

TEXTILE STORAGE

FINISHING  
AREA

 PAUL D.  
RESTOR

















