

# GATEWAY PLAZA

JACKSONVILLE, NORTH CAROLINA



## EXCLUSIVE LEASING PACKAGE

Tyler Quinn | [Tyler.Quinn@tscg.com](mailto:Tyler.Quinn@tscg.com) | 336.209.7571  
Jeff Nimmer, CCIM | [Jeff.Nimmer@tscg.com](mailto:Jeff.Nimmer@tscg.com) | 336.430.0005  
Taylor Drouillard | [Taylor.Drouillard@tscg.com](mailto:Taylor.Drouillard@tscg.com) | 984.960.3164





AVAILABLE  
2,400 SF

AVAILABLE  
1,200 SF

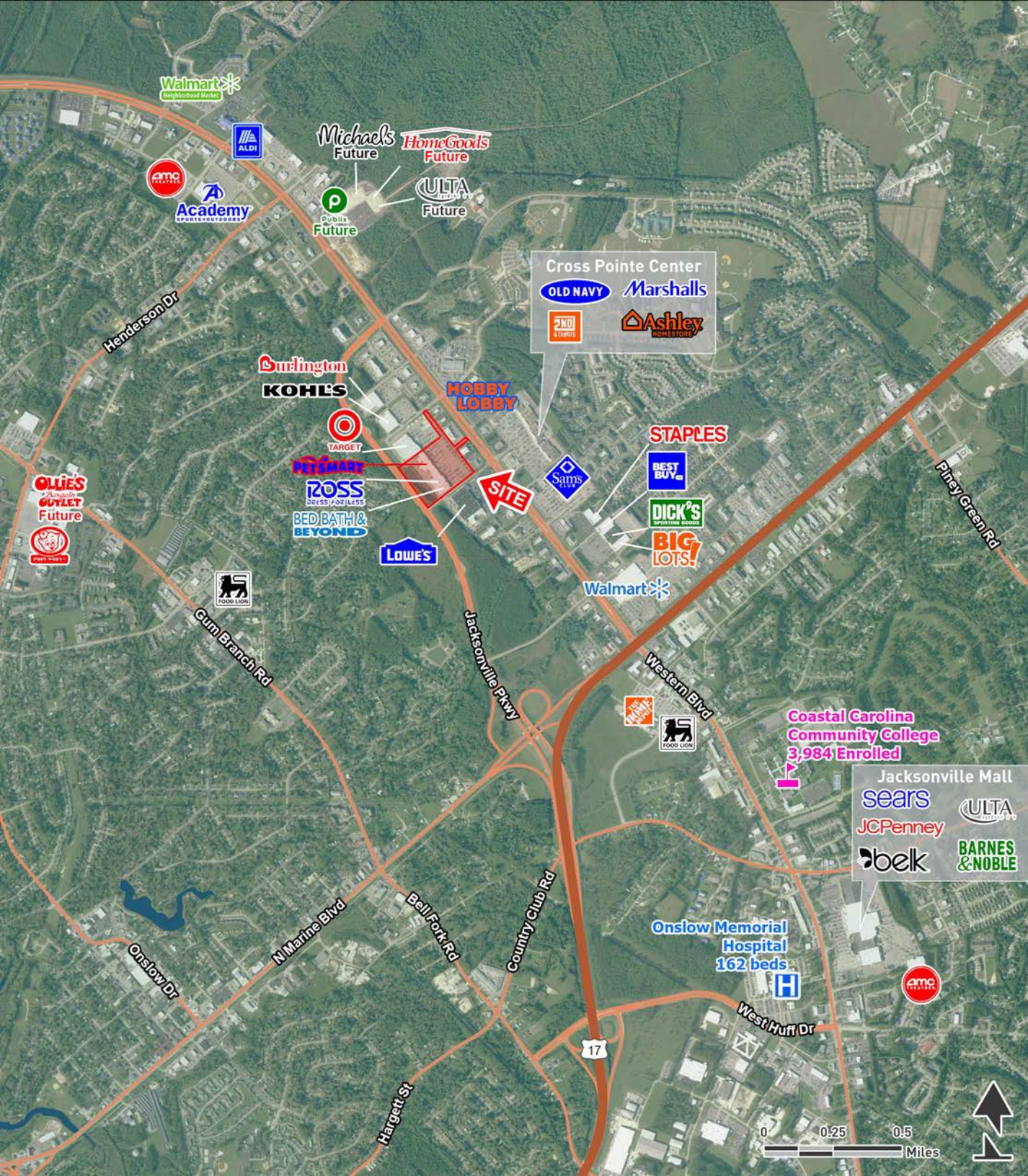
AVAILABLE  
3,055 SF  
.98 ACRES

WESTERN BOULEVARD (34,000 ADT)

GATEWAY DRIVE SOUTH



# PROPERTY OVERVIEW



- This 104,800 SF power center is the dominant center in the market, anchored by Target, Ross, PetSmart, and Bed Bath & Beyond
- Centrally located along the primary retail corridor in a growing community of Jacksonville, NC, with close proximity to Camp Lejeune
- Small shop space available consisting of 1,200 SF and 2,400 SF
- Signalized access to Western Blvd (34,000 ADT) and easily accessible from Highway 17

# JACKSONVILLE TRADE AREA

## 5-MILE RADIUS



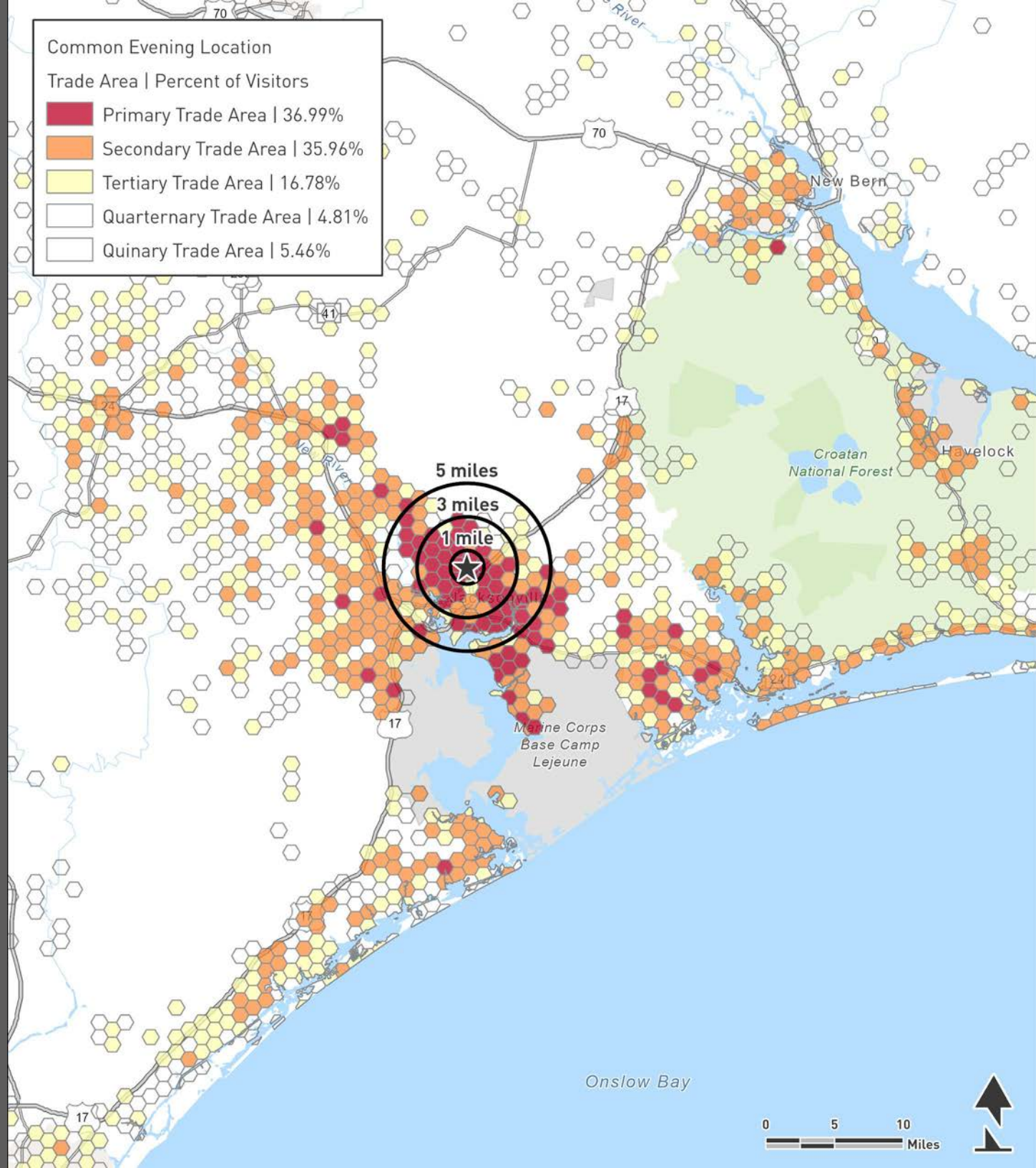
2018 POPULATION  
**80,115**



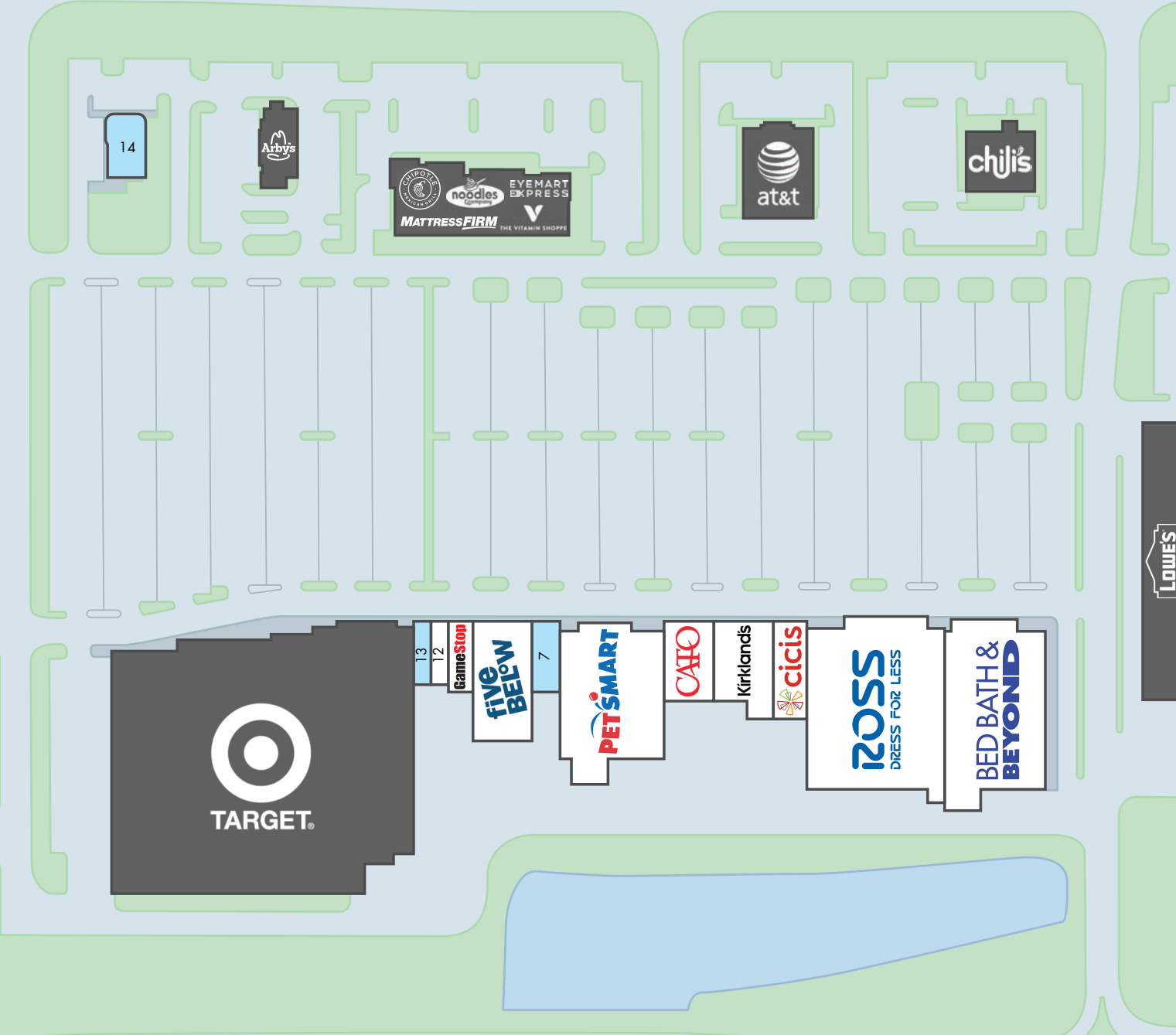
2018 DAYTIME POPULATION  
**95,254**



2018 AVERAGE HOUSEHOLD INCOME  
**\$62,241**



Unit	Tenant	SF
1	Bed Bath & Beyond	23,000
2	Ross	30,179
3	Cici's Pizza	4,000
4	Kirkland's	6,284
5	Cato Fashion	4,160
6	PetSmart	19,235
7	Available	2,400
8	Five Below	8,500
11	GameStop	2,100
12	Foxy Nails	1,200
13	Available	1,200
14	Former Payless	3,055 or .98 acres





# EXCLUSIVE LEASING PACKAGE

Tyler Quinn | [Tyler.Quinn@tscg.com](mailto:Tyler.Quinn@tscg.com) | 336.209.7571  
Jeff Nimmer, CCIM | [Jeff.Nimmer@tscg.com](mailto:Jeff.Nimmer@tscg.com) | 336.430.0005  
Taylor Drouillard | [Taylor.Drouillard@tscg.com](mailto:Taylor.Drouillard@tscg.com) | 984.960.3164