

7020 ORCHARD LAKE ROAD  
WEST BLOOMFIELD, MICHIGAN



**SIGNATURE  
ASSOCIATES**  
KNOW SIGNATURE | KNOW RESULTS

RETAIL FOR SALE  
42,307 Square Feet Available

**FORMER CAULEY CHEVROLET**



**WATCH OUR DRONE VIDEO** 

## PROPERTY FEATURES

- 42,307 available square footage
- Zoned B-1
- Built in 1978
- 380 parking spaces
- 5.6 acres
- Just north of 14 Mile Road and Northwestern Highway
- Sale Price: \$5,500,000 (\$130.00/sf)

**Comments:** Potential re-development site or re-use existing building. Join the synergy of Oakland County's strongest retail corridor!



For more information, please contact:

**GARY SALLEN**  
(248) 948 0105  
gsallen@signatureassociates.com

**ANGELA THOMAS**  
(248) 359 3838  
athomas@signatureassociates.com

**ERICA DUNLAP**  
(248) 359 3808  
edunlap@signatureassociates.com

# 7020 Orchard Lake Road– West Bloomfield, Michigan

## Retail For Sale

42,307  
Square Feet  
AVAILABLE



For more information, please contact:

**GARY SALLEN**  
(248) 948 0105

**ANGELA THOMAS**  
(248) 359 3838

**ERICA DUNLAP**  
(248) 359 3808

**SIGNATURE ASSOCIATES**  
One Towne Square, Suite 1200  
Southfield, MI 48076  
[www.signatureassociates.com](http://www.signatureassociates.com)

# 7020 Orchard Lake Road– West Bloomfield, Michigan

## Retail For Sale

42,307  
Square Feet  
AVAILABLE



### DEMOGRAPHICS

	POPULATION	MED. HH INCOME
1 MILE	10,088	89,515
3 MILE	63,859	10,5131
5 MILE	153,1643	102,511

### TRAFFIC COUNTS (TWO-WAY)

43,237	Orchard Lake N. of 14 Mile Rd. 2-Way
31,098	Orchard Lake S. of 14 Mile Rd. 2-Way
21,676	14 Mile Rd. W. of Orchard Lake 2-Way
19,607	14 Mile Rd. E. of Orchard Lake 2-Way



For more information, please contact:

**GARY SALLEN**  
(248) 948 0105

**ANGELA THOMAS**  
(248) 359 3838

**ERICA DUNLAP**  
(248) 359 3808

**SIGNATURE ASSOCIATES**

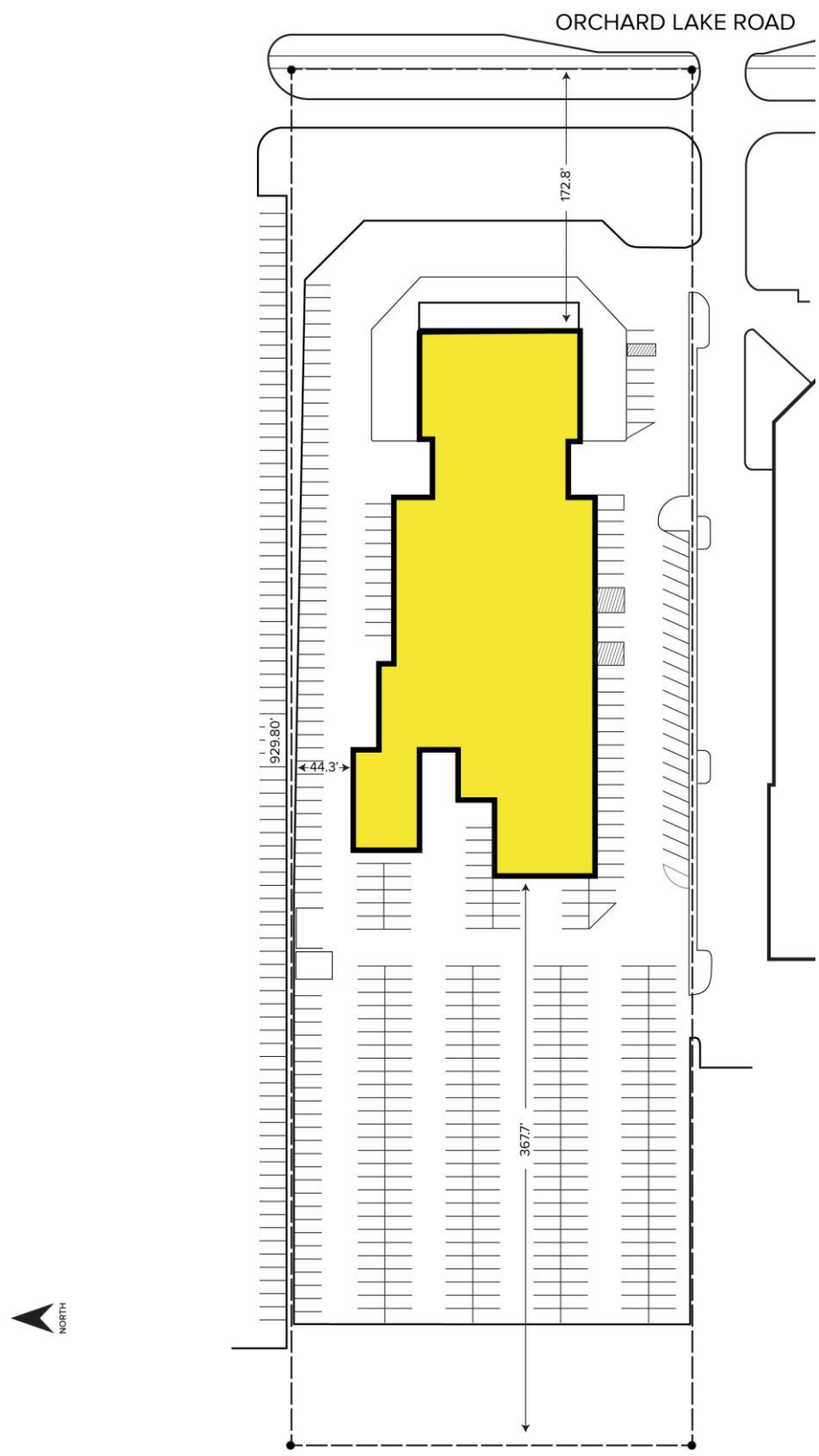
One Towne Square, Suite 1200  
Southfield, MI 48076  
www.signatureassociates.com

# 7020 Orchard Lake Road– West Bloomfield, Michigan

Retail For Sale

42,307  
Square Feet  
AVAILABLE

## Site Plan



For more information, please contact:

**GARY SALLEN**  
(248) 948 0105

**ANGELA THOMAS**  
(248) 359 3838

**ERICA DUNLAP**  
(248) 359 3808

**SIGNATURE ASSOCIATES**  
One Towne Square, Suite 1200  
Southfield, MI 48076  
[www.signatureassociates.com](http://www.signatureassociates.com)

Information is subject to verification and no liability for errors or omissions is assumed. Price is subject to change and listing withdrawal.