

# 14655 DEXTER AVENUE

DETROIT, MICHIGAN 48238



**AVISON  
YOUNG**

INDUSTRIAL SALE OPPORTUNITY

## INDUSTRIAL SALE OPPORTUNITY



47,997 SF Gross  
Total



34,092 SF Gross  
Office/Warehouse



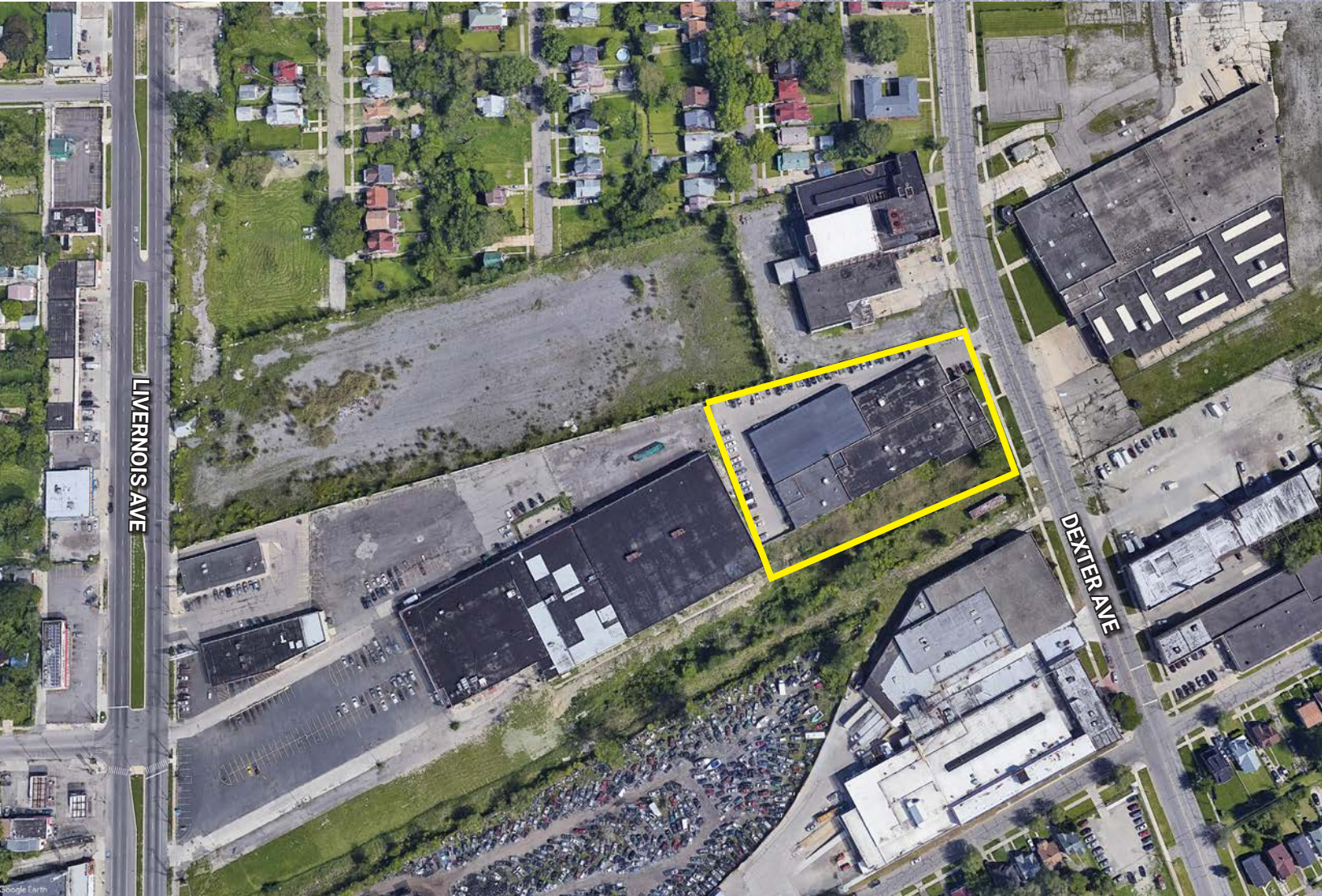
13,905 SF Gross  
Enclosed Garage



# 14655 DEXTER AVENUE

## PROPERTY HIGHLIGHTS

- 47,997 SF Gross Total; 34,092 Gross SF office/warehouse/13,905 SF Gross enclosed garage
- Zoned M4 Industrial
- Opportunity Zone property
- Ideal grow facility
- Ceiling height: office 8-10'/warehouse 18'/gym 20'
- Four (4) drive-in doors, one (1) grade level truck dock
- Office/warehouse 100% air conditioned
- Remote controlled operating security gate
- 53 surface parking spaces/34 enclosed garage parking spaces
- Close proximity to I-96, I-75 and M-10
- **Sale price:** \$1,900,000

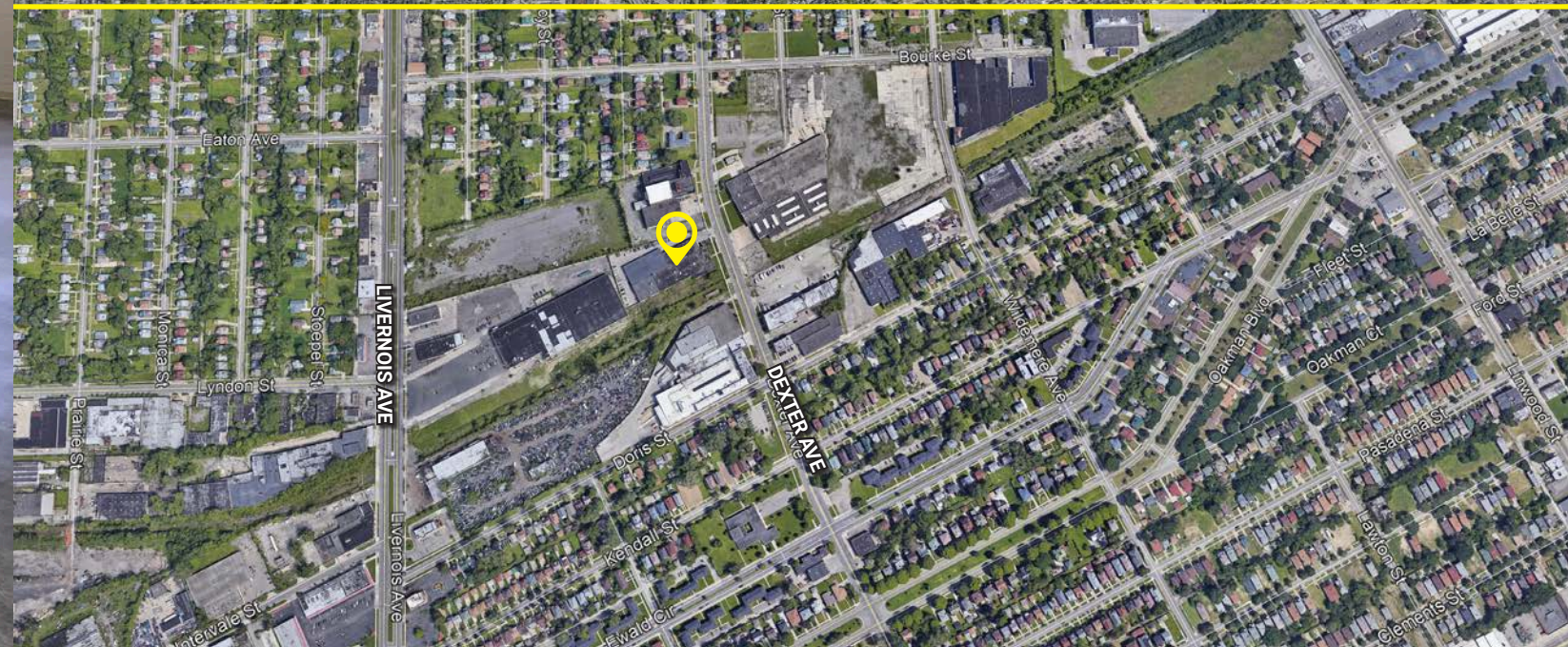
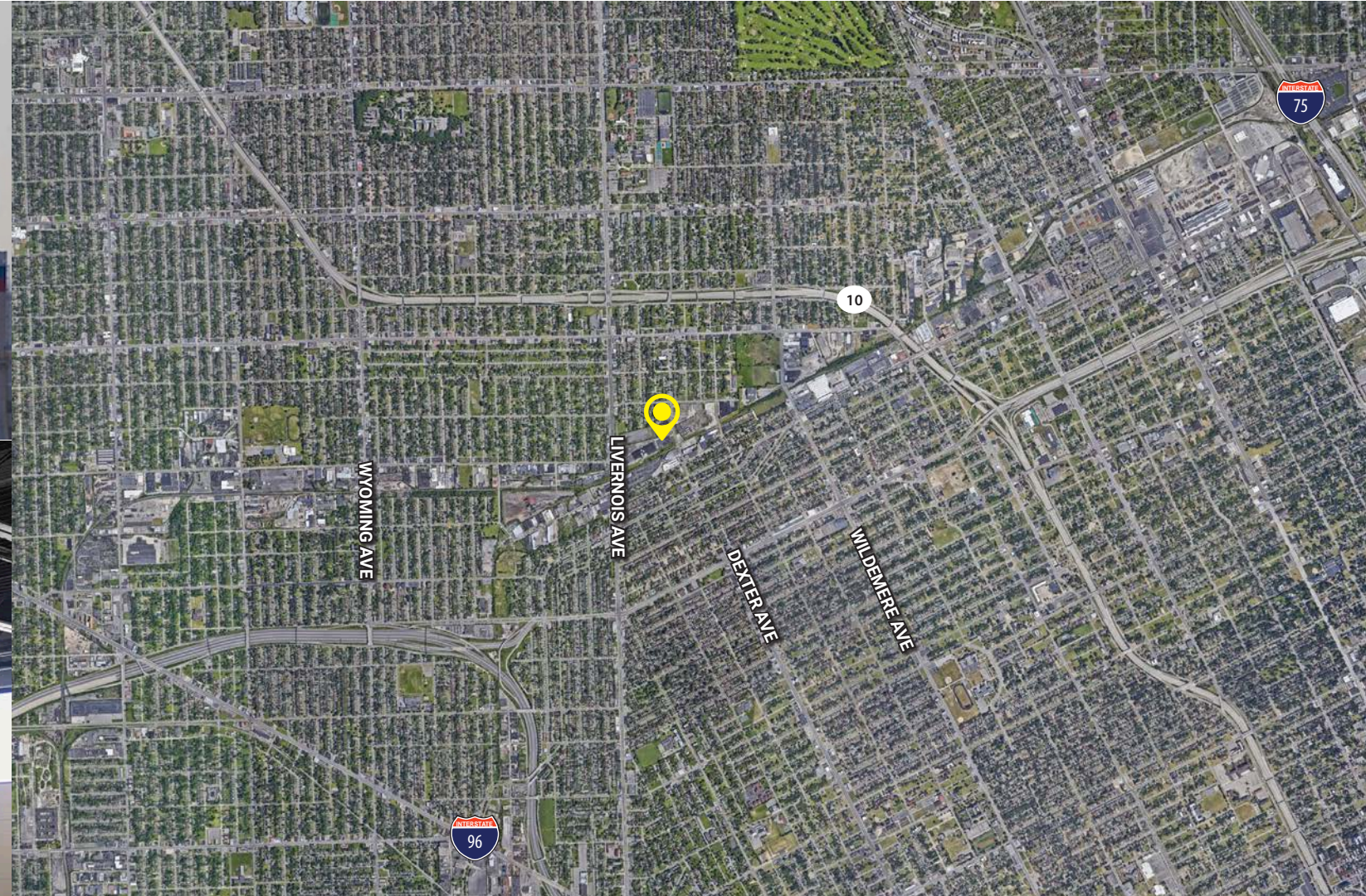


## LOCATION HIGHLIGHTS

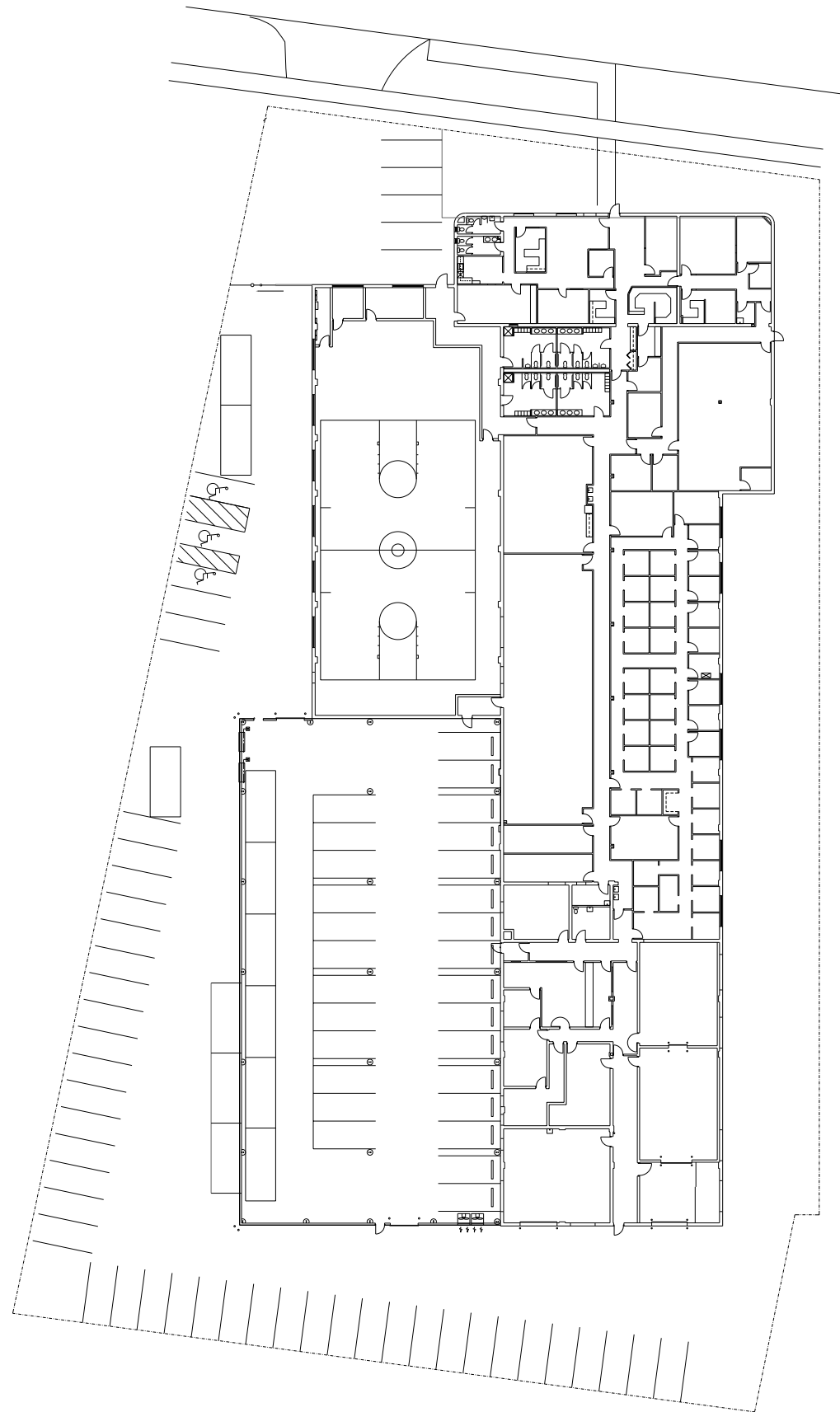
# 14655 DEXTER AVENUE



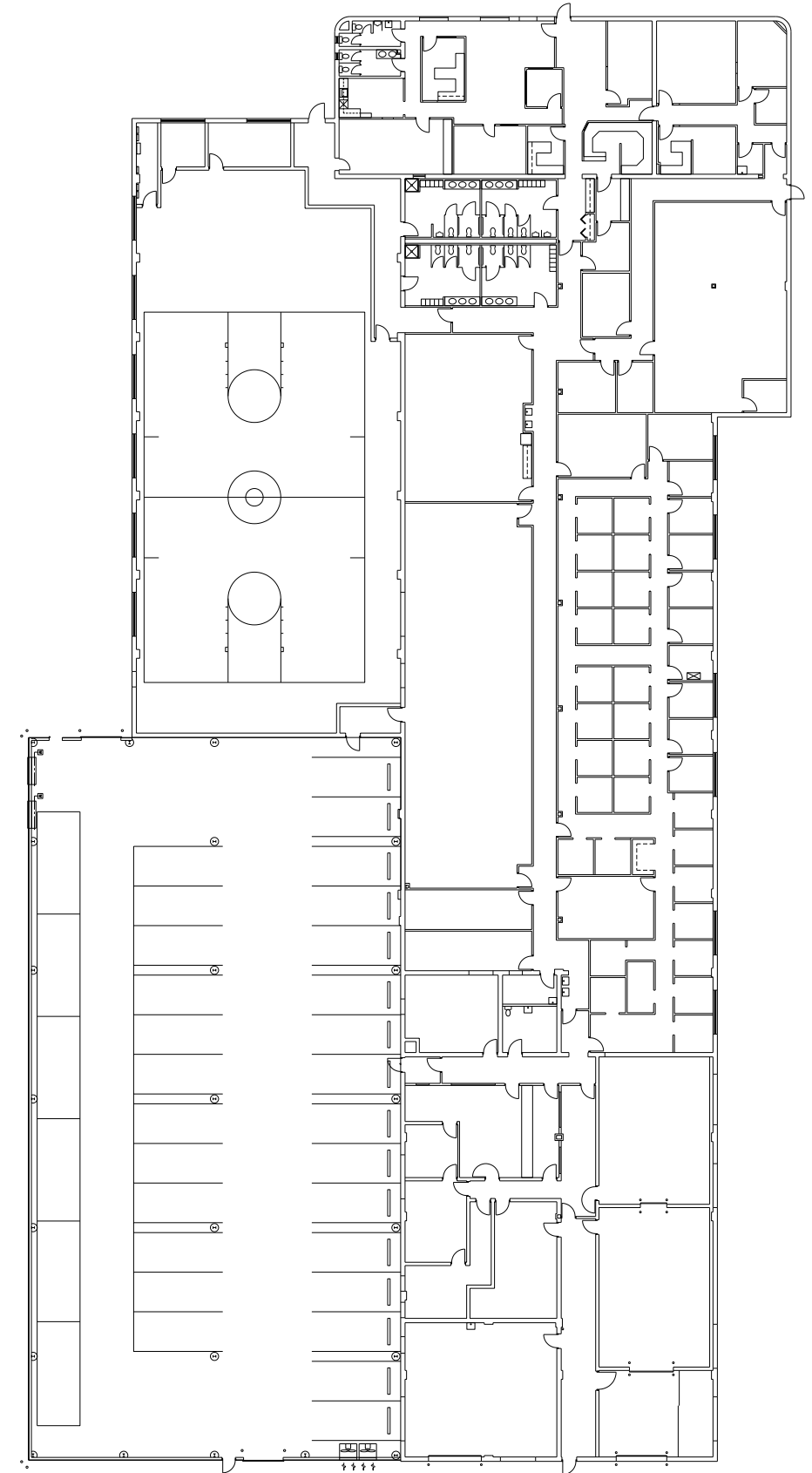
The property is conveniently located in one of Detroit's most popular industrial districts. The area has excellent access to the John C Lodge Freeway and borders historic neighborhoods such as Russell Woods and the University District. The 48,402 SF building offers flexibility with both office and industrial space available.



# SITE PLAN



# FLOOR PLAN



## PROPERTY PHOTOS



## CONTACT US

**James C. Becker**, Principal, Managing Director  
D: +1 313 209 4121  
E: jim.becker@avisonyoung.com

**Sloane F. Walsh**, Associate  
D: +1 313 209 4126  
M: +1 248 227 0182  
E: sloane.walsh@avisonyoung.com

**Dan Gallagher**, Associate  
D: +1 313 209 4112  
E: dan.gallagher@avisonyoung.com