

LOWER EAST
SIDE

NEW YORK
NY

50 CLINTON STREET



CONCEPTUAL RENDERING

SPACE DETAILS

LOCATION

East block between Rivington and Stanton Streets

APPROXIMATE SIZE

Ground Floor 1,780 SF

FRONTAGE

60 FT on Clinton Street

CEILING HEIGHT

Ground Floor 12 FT 3 IN

TERM

Long term

POSSESSION

Immediate

SITE STATUS

New construction

NEIGHBORS

Clinton Street Baking Company, Blue Bottle Coffee, Speedy Romeo, T-Mobile, Trader Joe's, Target, Ivan Ramen and Rizzo's Fine Pizza

COMMENTS

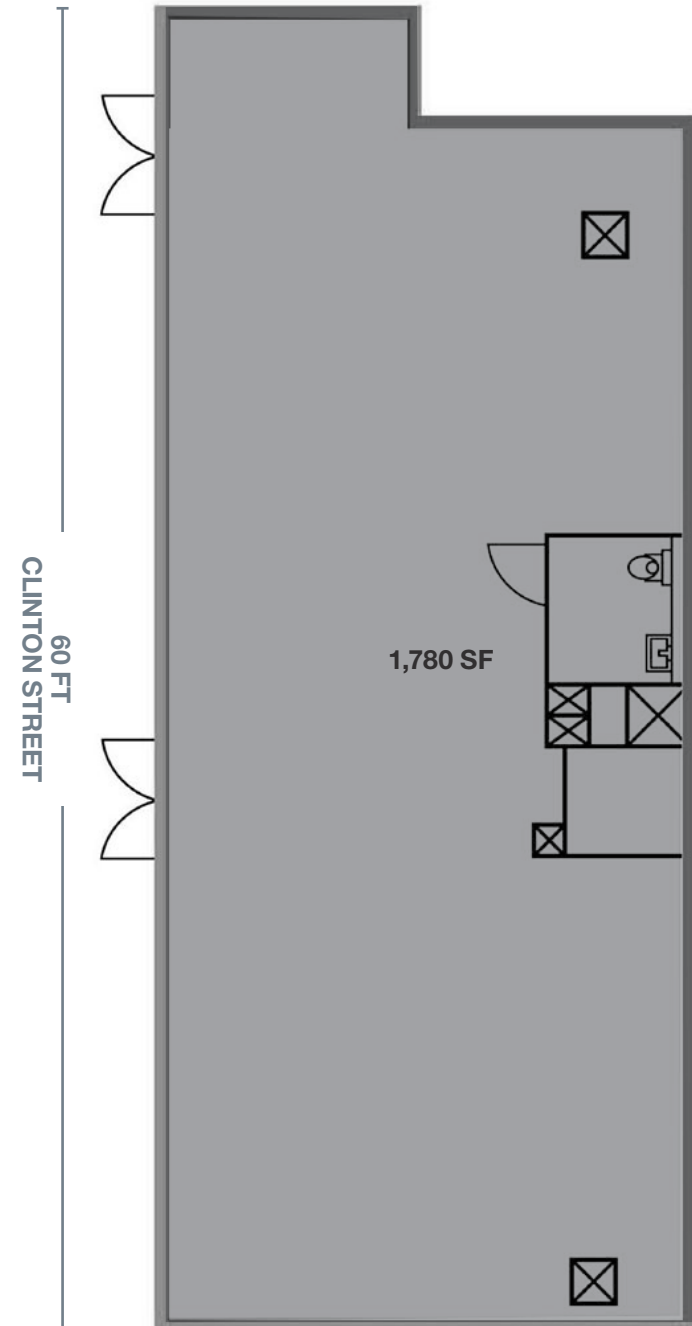
Brand new storefront, located at the base of a 37-unit luxury condominium building

Space is vented and all uses considered

One block from Essex Crossing development which will bring 1,000 new residential units, 450,000 SF of retail space and 400,000 SF of office space

Steps from the Delancey/Essex Street subway station servicing the **F** **M** **J** and **Z** subway lines with an annual ridership of 8,128,719

GROUND FLOOR



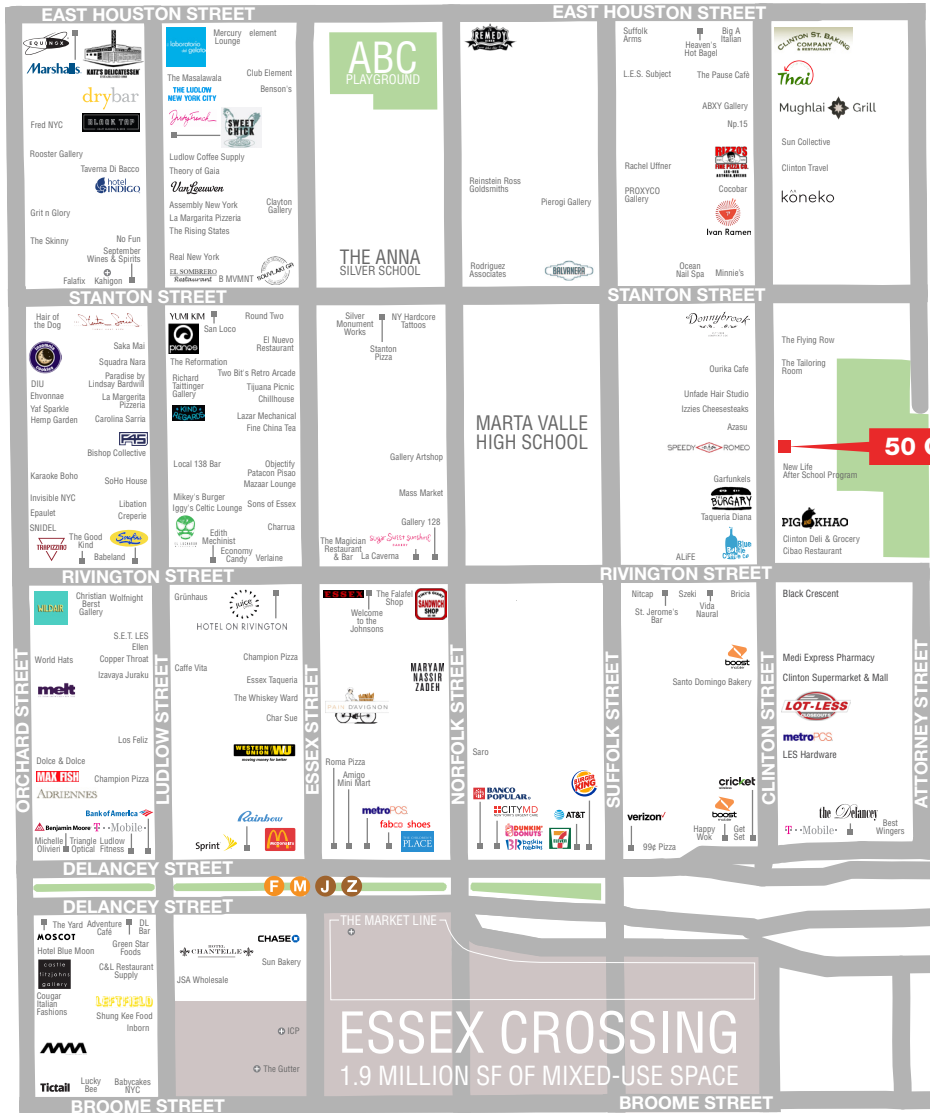
AREA NEIGHBORS



CONCEPTUAL RENDERING
50 CLINTON STREET EXTERIOR



AREA RETAIL



CONTACT EXCLUSIVE AGENTS

MAI SHACHI
212.916.2927
mai.shachi@ngkf.com

JOSHUA STRAUSS
212.331.0126
joshua.strauss@ngkf.com



NGKF.COM

© 2019 NEWMARK KNIGHT FRANK RETAIL. The information contained herein has been obtained from sources deemed reliable but has not been verified and no guarantee, warranty or representation, either express or implied, is made with respect to such information. Terms of sale or lease and availability are subject to change or withdrawal without notice.