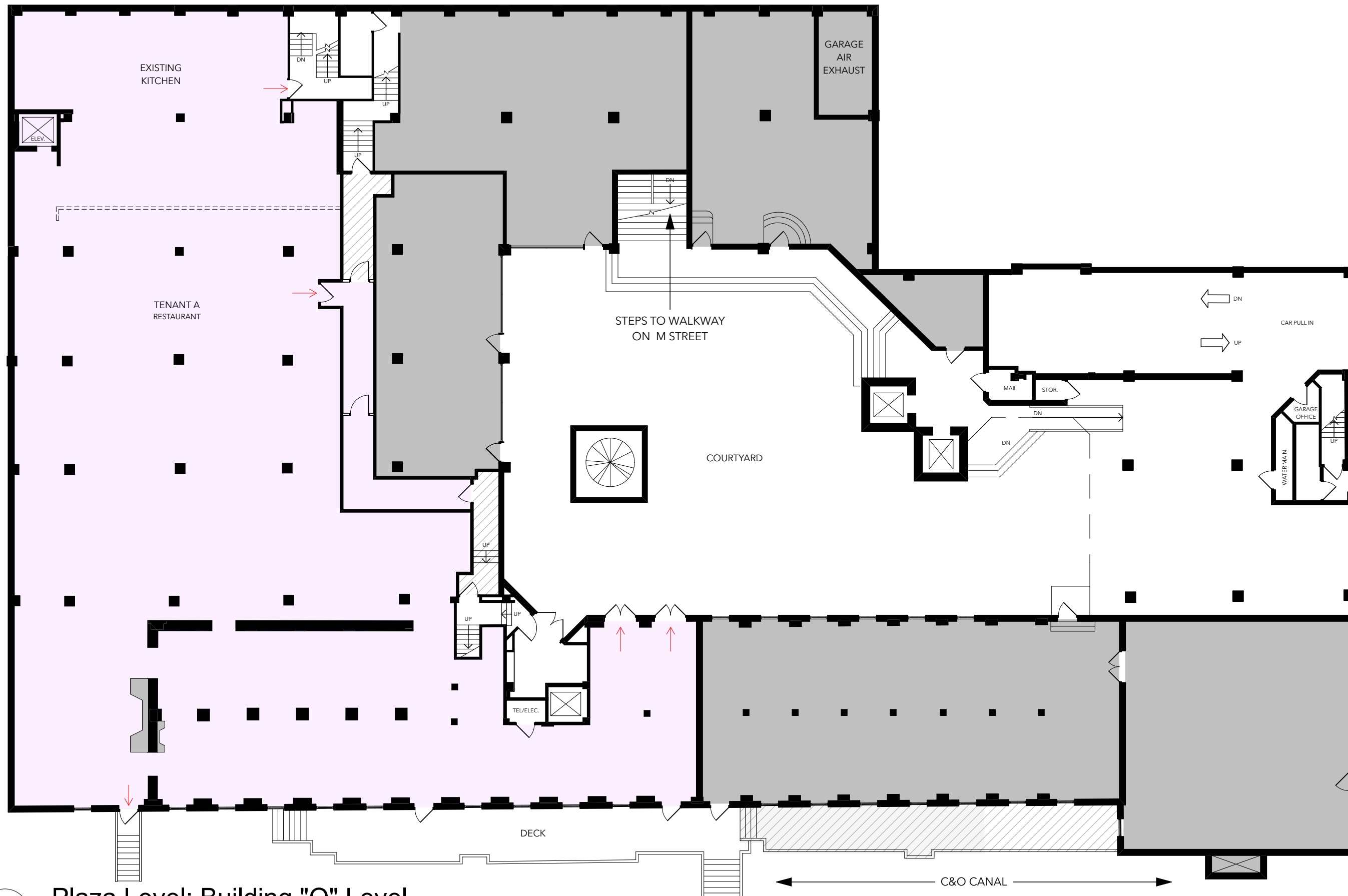


Disclaimer

This computer aided design (CAD) data is provided for the convenience of the recipient only. The CAD data was prepared as a CORE architecture + design, inc. internal working document. As such, it may be incomplete, contain unintentional inaccuracies, or be partially obsolete. Therefore, neither CORE nor RB Properties make any warranties, either express or implied, of merchantability and fitness for any particular purpose. The User of this data takes full responsibility for the accuracy and correctness of all measurements, areas, inventories, etc. extracted from this data either manually or with the use of a computer. To the fullest extent permitted by law, the Receiving Party shall indemnify and defend CORE architecture + design, inc. and RB Properties from and against any claims arising from the use of, or modification to, the Digital Data.

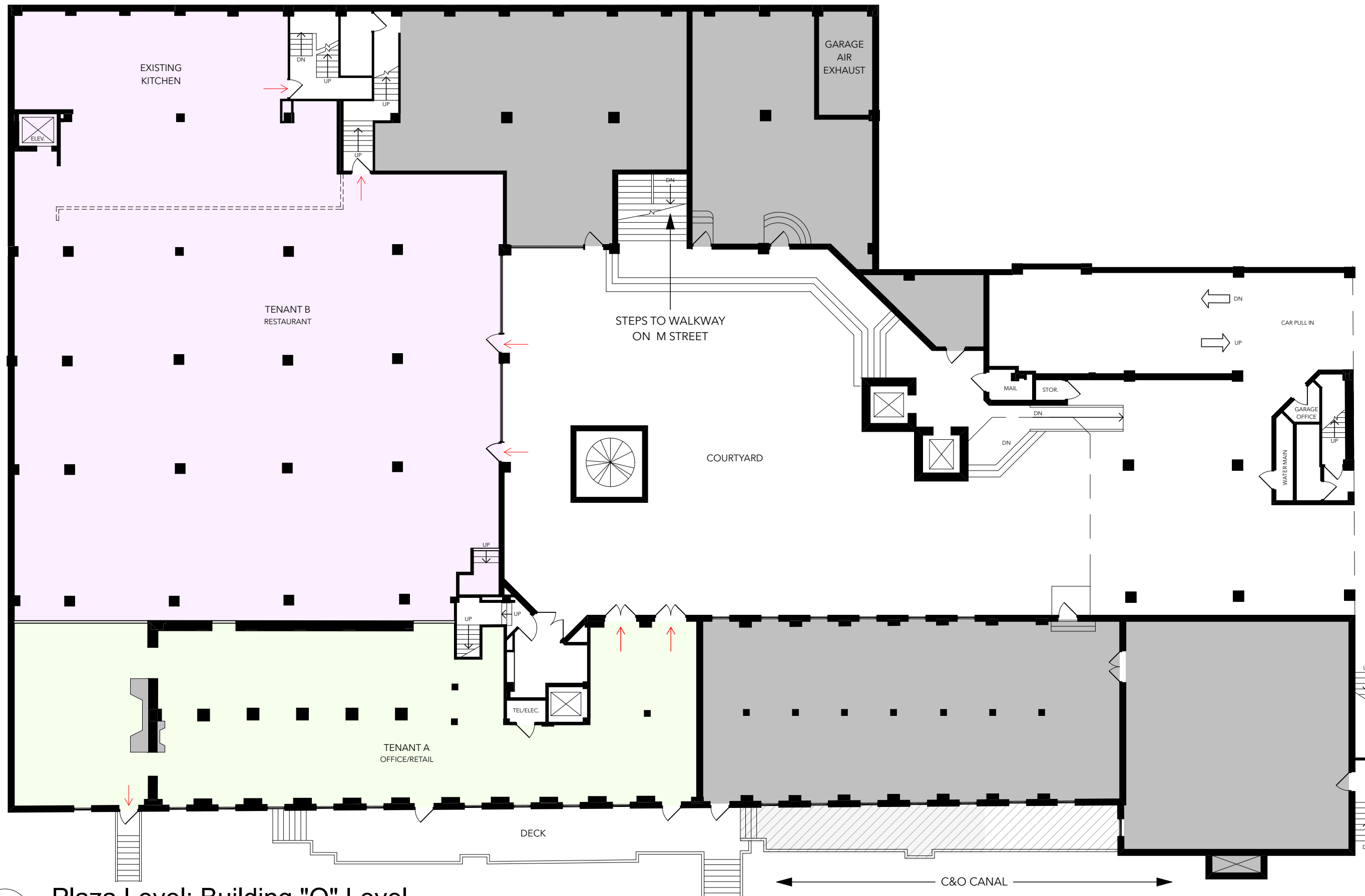


KEY	Approx. Rentable SF
	10,755

1 Plaza Level: Building "O" Level

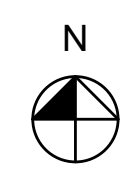
Disclaimer

This computer aided design (CAD) data is provided for the convenience of the recipient only. The CAD data was prepared as a CORE architecture + design, inc. internal working document. As such, it may be incomplete, contain unintentional inaccuracies, or be partially obsolete. Therefore, neither CORE nor RB Properties make any warranties, either express or implied, of merchantability and fitness for any particular purpose. The User of this data takes full responsibility for the accuracy and correctness of all measurements, areas, inventories, etc. extracted from this data either manually or with the use of a computer. To the fullest extent permitted by law, the Receiving Party shall indemnify and defend CORE architecture + design, inc. and RB Properties from and against any claims arising from the use of, or modification to, the Digital Data.

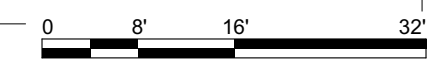


KEY	Approx. Rentable SF
	8,528
	3,656

31ST ST

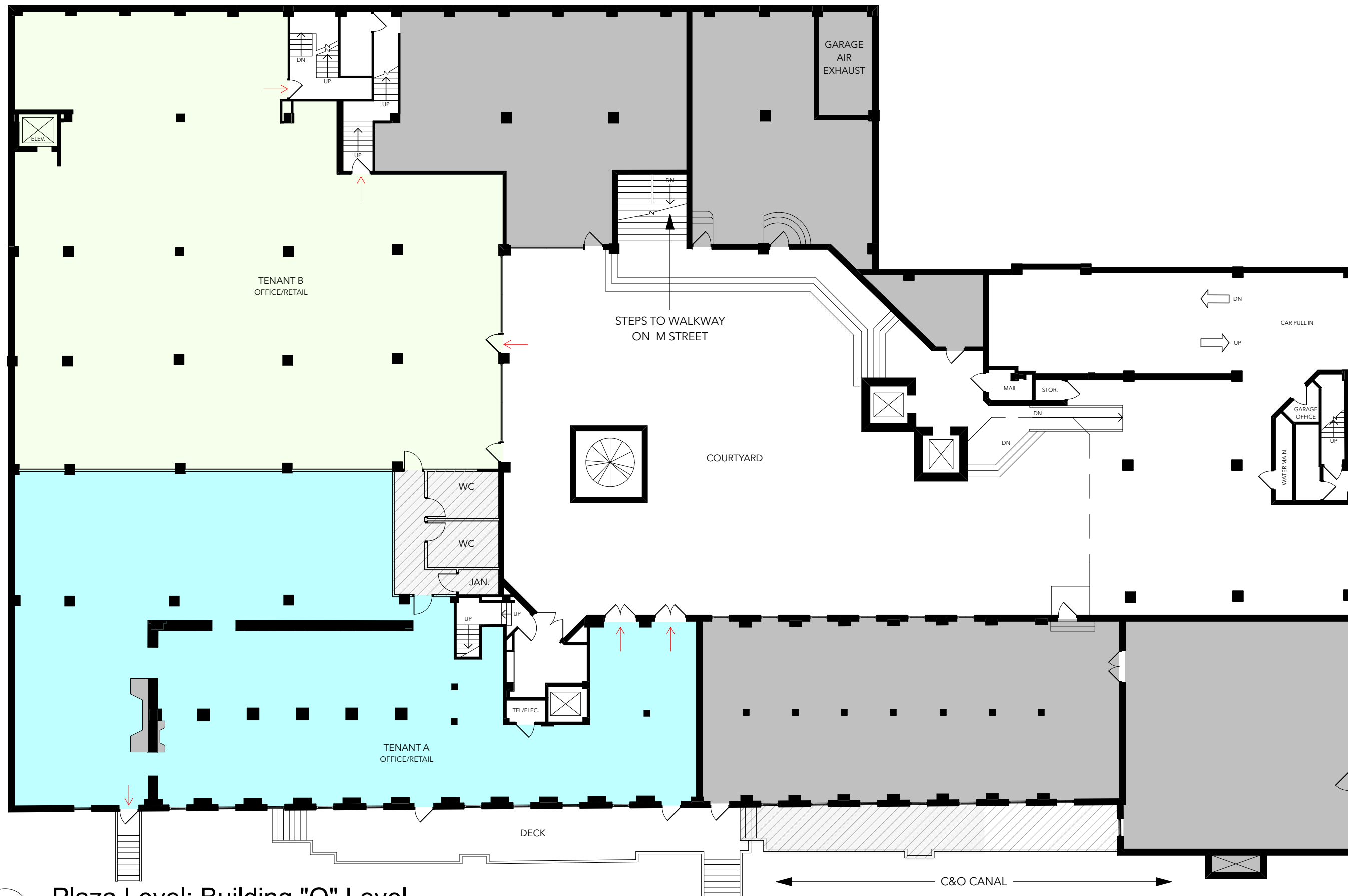


1 Plaza Level: Building "O" Level



Disclaimer

This computer aided design (CAD) data is provided for the convenience of the recipient only. The CAD data was prepared as a CORE architecture + design, inc. internal working document. As such, it may be incomplete, contain unintentional inaccuracies, or be partially obsolete. Therefore, neither CORE nor RB Properties make any warranties, either express or implied, of merchantability and fitness for any particular purpose. The User of this data takes full responsibility for the accuracy and correctness of all measurements, areas, inventories, etc. extracted from this data either manually or with the use of a computer. To the fullest extent permitted by law, the Receiving Party shall indemnify and defend CORE architecture + design, inc. and RB Properties from and against any claims arising from the use of, or modification to, the Digital Data.



KEY	Approx. Rentable SF
	6,431
	5,753

1

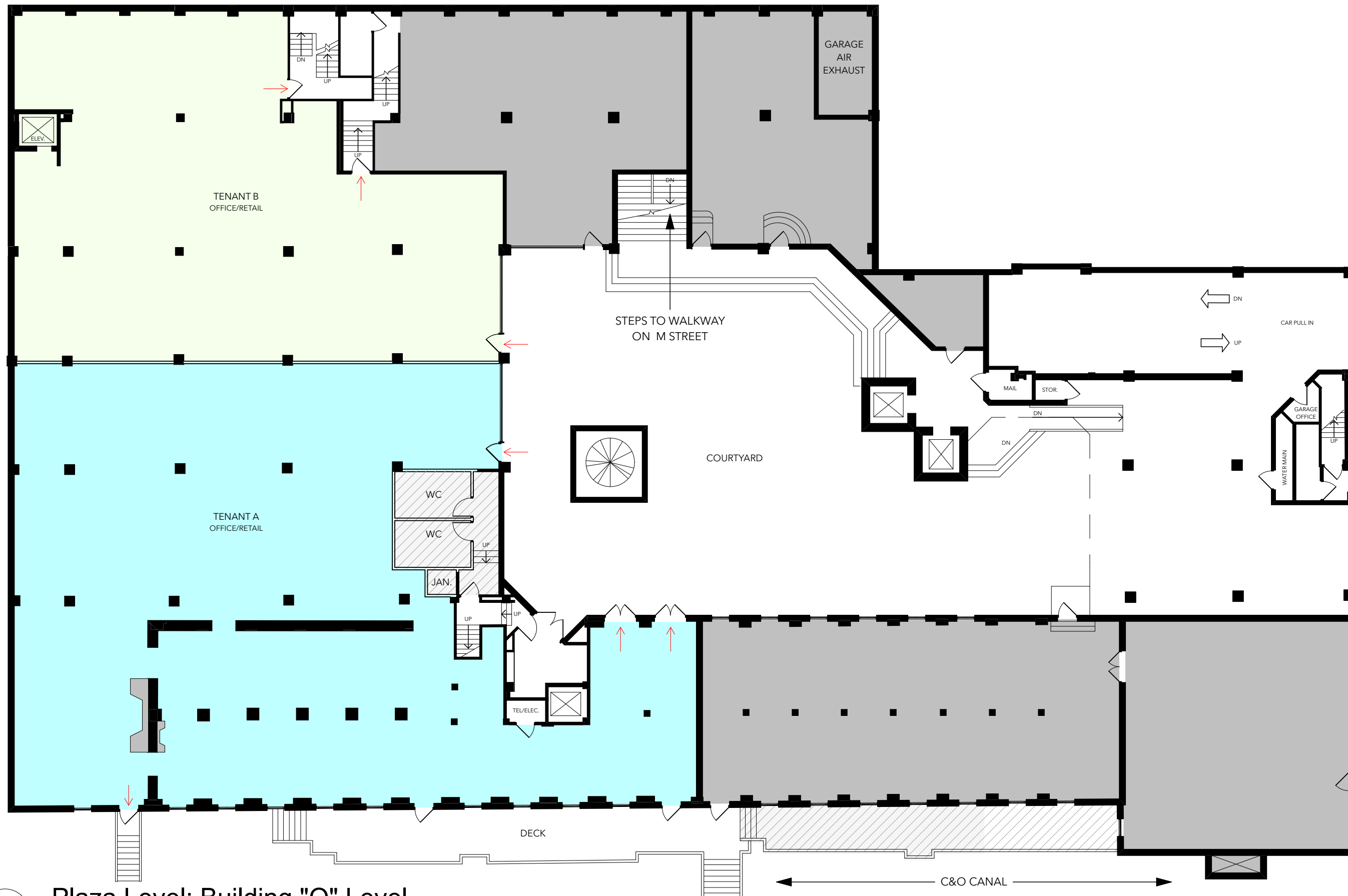
Plaza Level: Building "O" Level

CORE
 1010 wisconsin ave nw, suite 405
 washington, dc 20007
 t 202.466.6116 f 202.466.6235
 w coredc.com e gen@coredc.com

Canal Square Sea Catch Pres.4
 Project Number 17003.00
 Printed 2/28/17
 ©2017 CORE architecture + design, inc.
Option D - Two Tenants, Two Offices

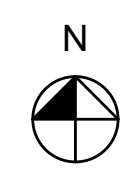
Disclaimer

This computer aided design (CAD) data is provided for the convenience of the recipient only. The CAD data was prepared as a CORE architecture + design, inc. internal working document. As such, it may be incomplete, contain unintentional inaccuracies, or be partially obsolete. Therefore, neither CORE nor RB Properties make any warranties, either express or implied, of merchantability and fitness for any particular purpose. The User of this data takes full responsibility for the accuracy and correctness of all measurements, areas, inventories, etc. extracted from this data either manually or with the use of a computer. To the fullest extent permitted by law, the Receiving Party shall indemnify and defend CORE architecture + design, inc. and RB Properties from and against any claims arising from the use of, or modification to, the Digital Data.



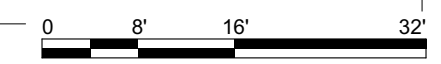
KEY	Approx. Rentable SF
	4,600
	7,417

31ST ST



1

Plaza Level: Building "O" Level

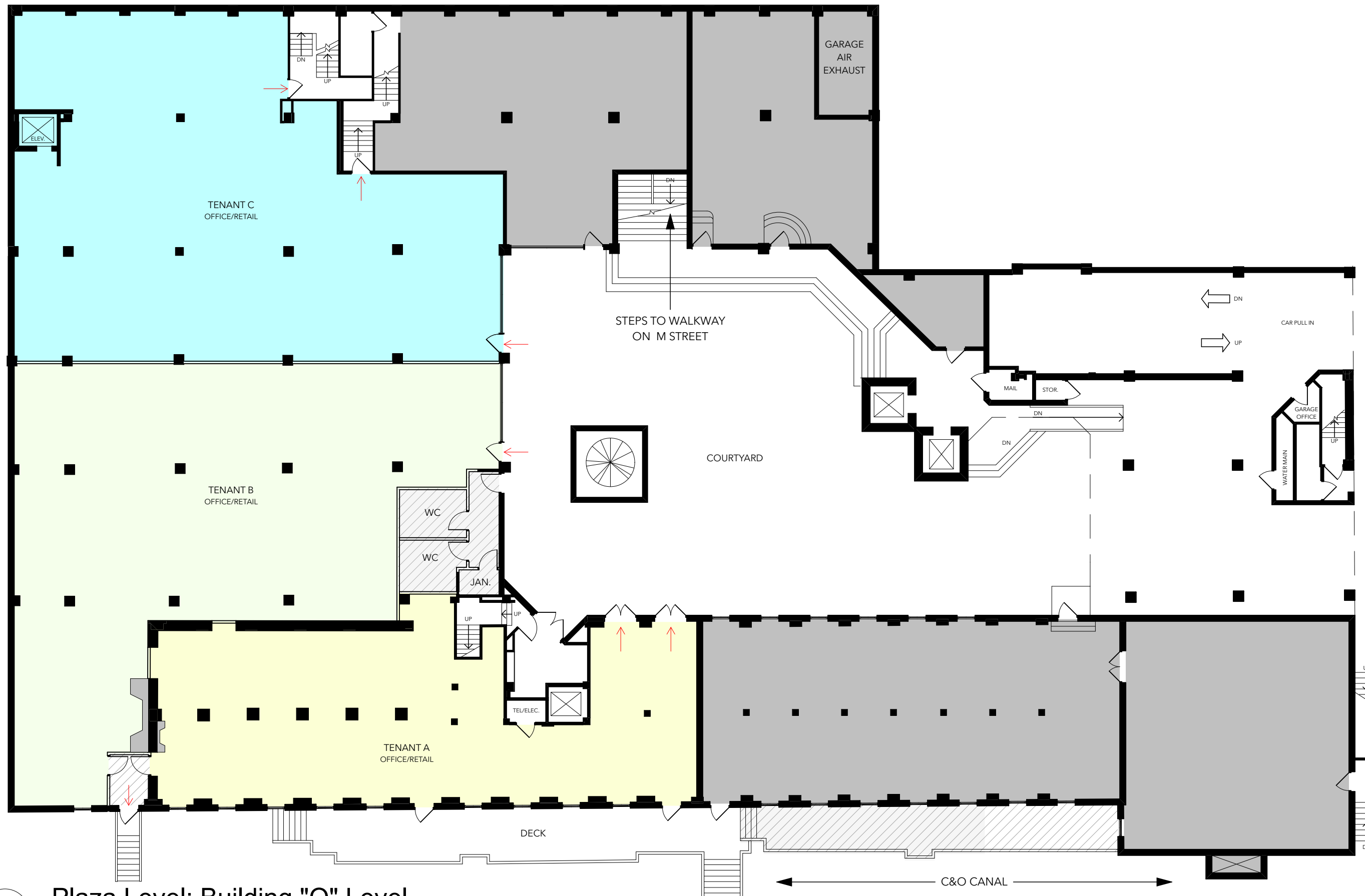


CORE
 1010 wisconsin ave nw, suite 405
 washington, dc 20007
 t 202.466.6116 f 202.466.6235
 w coredc.com e gen@coredc.com

Canal Square Sea Catch Pres.5
 Project Number 17003.00
 Printed 2/28/17
 ©2017 CORE architecture + design, inc.
 Option E - Two Tenants, Two Offices

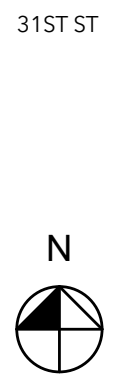
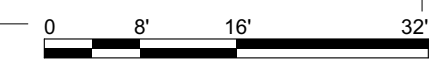
Disclaimer

This computer aided design (CAD) data is provided for the convenience of the recipient only. The CAD data was prepared as a CORE architecture + design, inc. internal working document. As such, it may be incomplete, contain unintentional inaccuracies, or be partially obsolete. Therefore, neither CORE nor RB Properties make any warranties, either express or implied, of merchantability and fitness for any particular purpose. The User of this data takes full responsibility for the accuracy and correctness of all measurements, areas, inventories, etc. extracted from this data either manually or with the use of a computer. To the fullest extent permitted by law, the Receiving Party shall indemnify and defend CORE architecture + design, inc. and RB Properties from and against any claims arising from the use of, or modification to, the Digital Data.



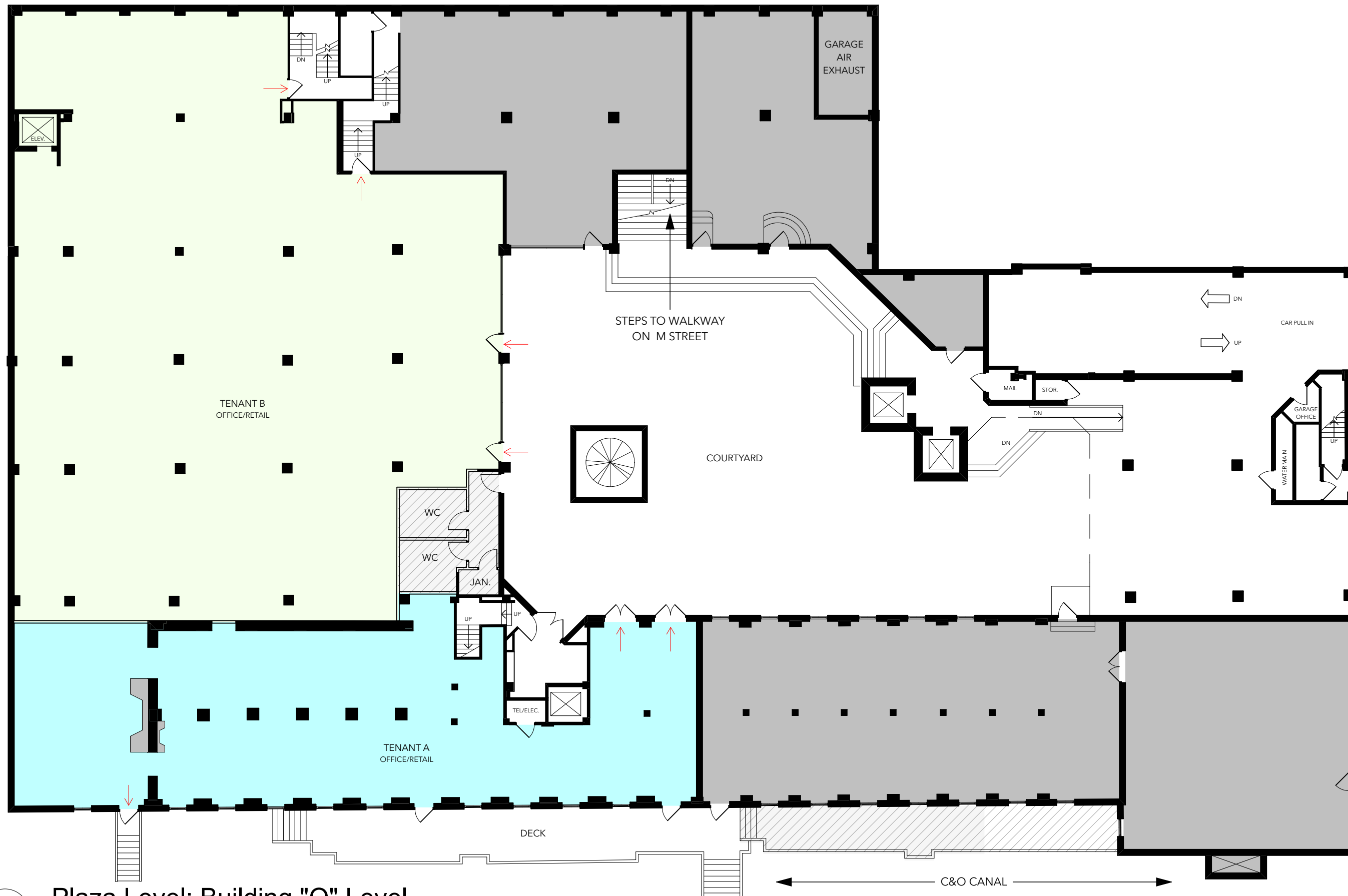
KEY	Approx. Rentable SF
	4,600
	4,483
	2,948

1 Plaza Level: Building "O" Level



Disclaimer

This computer aided design (CAD) data is provided for the convenience of the recipient only. The CAD data was prepared as a CORE architecture + design, inc. internal working document. As such, it may be incomplete, contain unintentional inaccuracies, or be partially obsolete. Therefore, neither CORE nor RB Properties make any warranties, either express or implied, of merchantability and fitness for any particular purpose. The User of this data takes full responsibility for the accuracy and correctness of all measurements, areas, inventories, etc. extracted from this data either manually or with the use of a computer. To the fullest extent permitted by law, the Receiving Party shall indemnify and defend CORE architecture + design, inc. and RB Properties from and against any claims arising from the use of, or modification to, the Digital Data.



KEY	Approx. Rentable SF
	8,291
	3,741

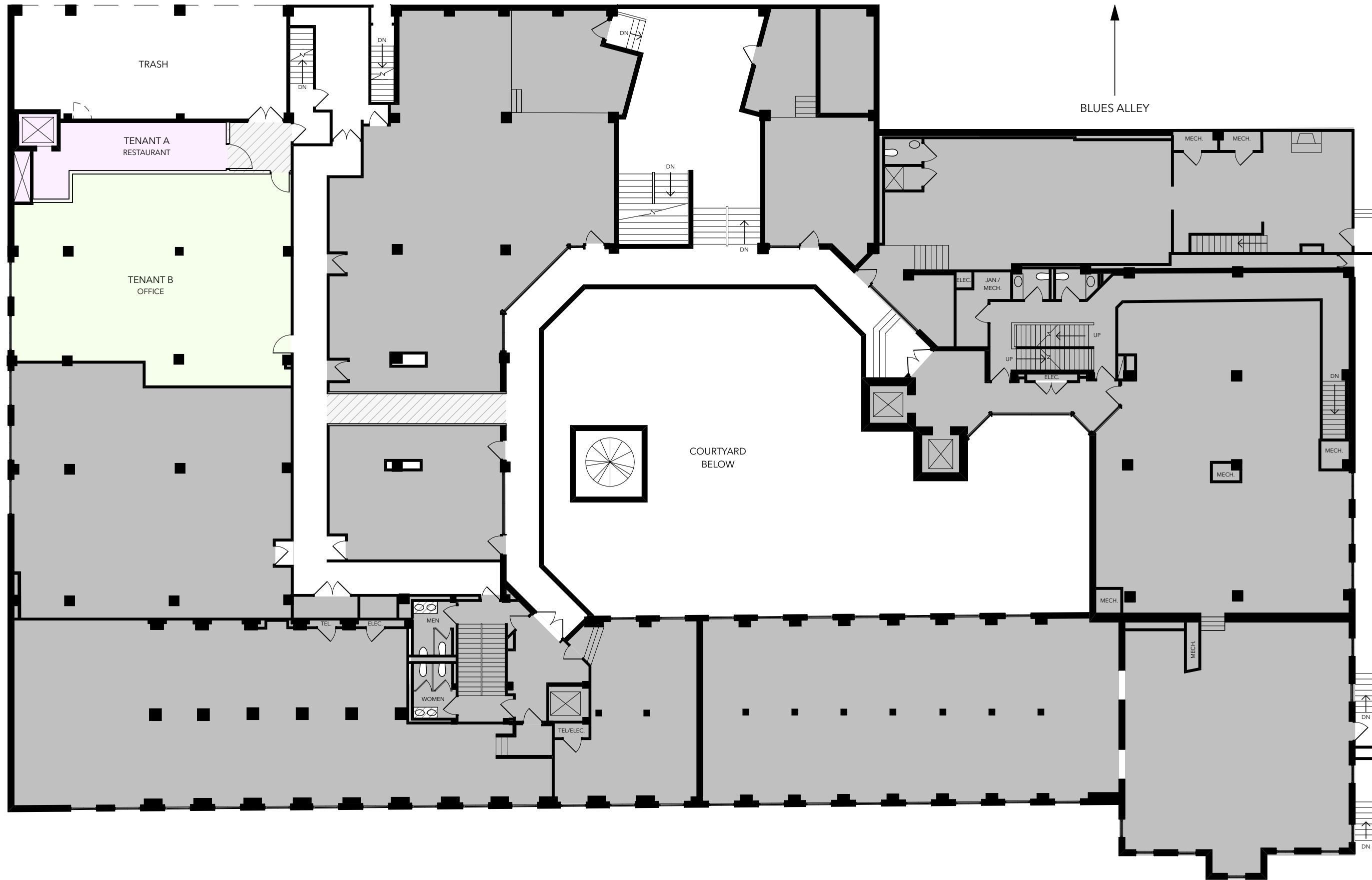
1

Plaza Level: Building "O" Level

CORE
 1010 wisconsin ave nw, suite 405
 washington, dc 20007
 t 202.466.6116 f 202.466.6235
 w coredc.com e gen@coredc.com



Canal Square Sea Catch Pres.7
 Project Number 17003.00
 Printed 2/28/17
 ©2017 CORE architecture + design, inc.

Option G - Two Tenants, Two Offices



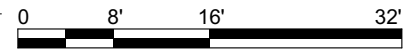
Disclaimer

This computer aided design (CAD) data is provided for the convenience of the recipient only. The CAD data was prepared as a CORE architecture + design, inc. internal working document. As such, it may be incomplete, contain unintentional inaccuracies, or be partially obsolete. Therefore, neither CORE nor RB Properties make any warranties, either express or implied, of merchantability and fitness for any particular purpose. The User of this data takes full responsibility for the accuracy and correctness of all measurements, areas, inventories, etc. extracted from this data either manually or with the use of a computer. To the fullest extent permitted by law, the Receiving Party shall indemnify and defend CORE architecture + design, inc. and RB Properties from and against any claims arising from the use of, or modification to, the Digital Data.

KEY	Approx. Rentable SF
	454
	1,891



1 Upper Level (BLDG's 1st Floor or MEZZ.)



CORE
 1010 wisconsin ave nw, suite 405
 washington, dc 20007
 t 202.466.6116 f 202.466.6235
 w coredc.com e gen@coredc.com