

# Menlo Business Park

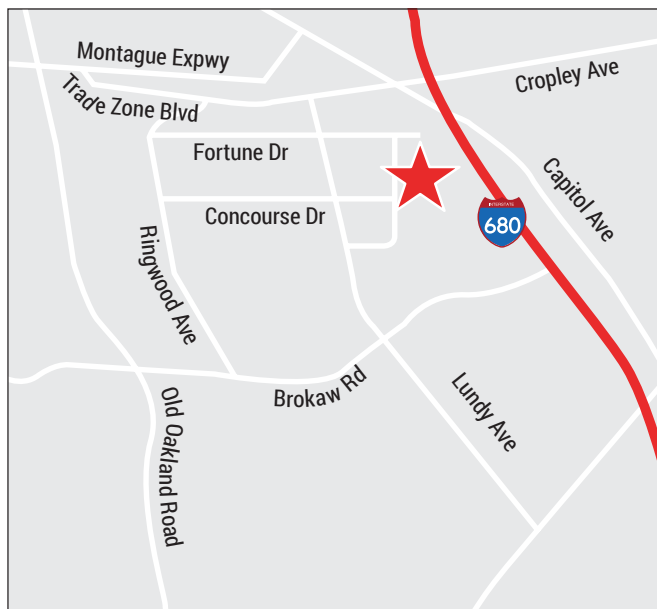
2360 Qume Drive, Suite A

San Jose, CA



## Property Size: ±4,479 SF

As exclusive agent(s), we are pleased to offer the following space:



- ◆ 100% Drop Ceiling Office / R&D Area
- ◆ Front Unit
- ◆ Great Glass line
- ◆ Perimeter Privates with Side Light Glass
- ◆ Lunch Area / Break Room
- ◆ Open Office Area
- ◆ Large Conference Room
- ◆ One (1) Grade Level Truck Door / Glassed In
- ◆ Call to Tour
- ◆ Floor Plan on Reverse



Frank Cox 408.982.8422 [fcx@ngkf.com](mailto:fcx@ngkf.com) CA RE License #00889881

3055 Olin Avenue, Suite 2200, San Jose, CA 95128

[www.ngkf.com](http://www.ngkf.com)

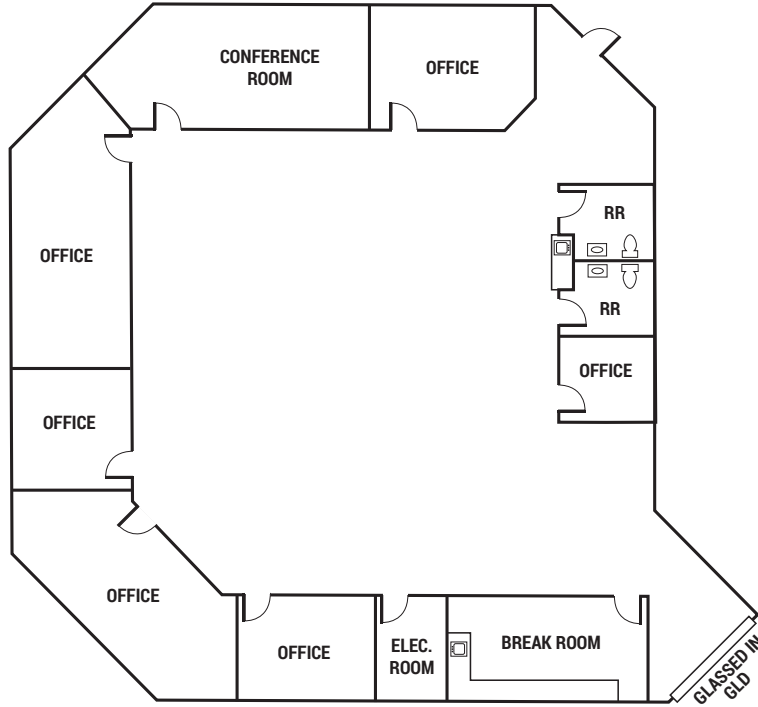
The distributor of this communication is performing acts for which a real estate license is required. The information contained herein has been obtained from sources deemed reliable but has not been verified and no guarantee, warranty or representation, either express or implied, is made with respect to such information. Terms of sale or lease and availability are subject to change or withdrawal without notice.

19-1431 • 12/19

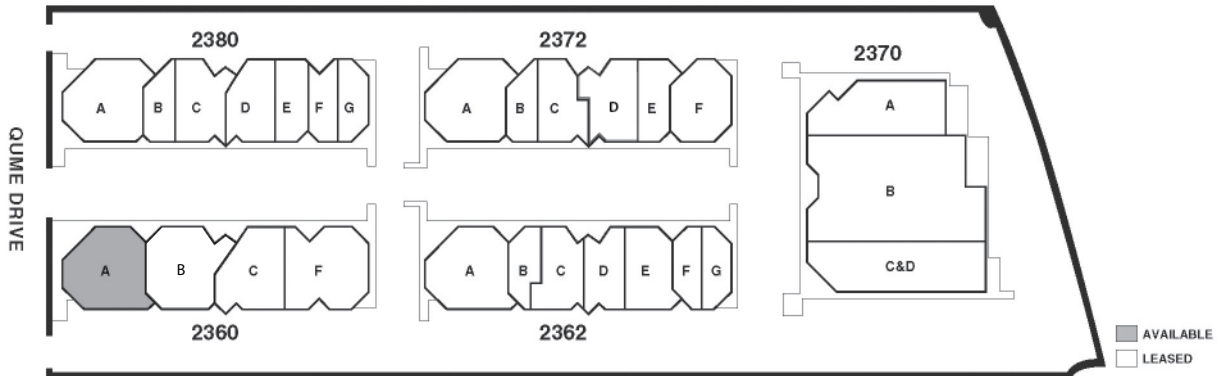
# Menlo Business Park

2360 Qume Drive, Suite A  
San Jose, CA

## Existing Floor Plan ±4,479 SF



## Site Plan



Frank Cox 408.982.8422 [fcox@ngkf.com](mailto:fcox@ngkf.com) CA RE License #00889881

3055 Olin Avenue, Suite 2200, San Jose, CA 95128

[www.ngkf.com](http://www.ngkf.com)

The distributor of this communication is performing acts for which a real estate license is required. The information contained herein has been obtained from sources deemed reliable but has not been verified and no guarantee, warranty or representation, either express or implied, is made with respect to such information. Terms of sale or lease and availability are subject to change or withdrawal without notice.