

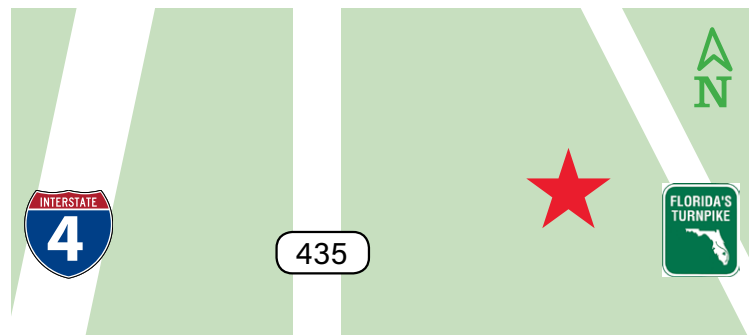
AVAILABLE FOR SALE



6450 Kingspointe Parkway, Units 8A & 8B

Building Benefits

- 5,500 Total Square Feet
- 4,200 Square Feet Ground Floor
- 1,300 Improved Mezzanine
- 5 Private Offices, Large Bull Pen, 1 Conference Room, 2 Restrooms
- Air Conditioned Warehouse 1,500 to 3,670 S.F. & Fully Sprinklered
- 2 Dock Height Doors – Huge Truck Court
- Abundant Parking
- Beautiful Business Park Setting
- Excellent Access to I-4 and the Florida Turnpike
- Asking Price: \$799,000



Sand Lake Road

6450 Kings Pointe Parkway
Orlando, FL 32819



Contact: JC Conte

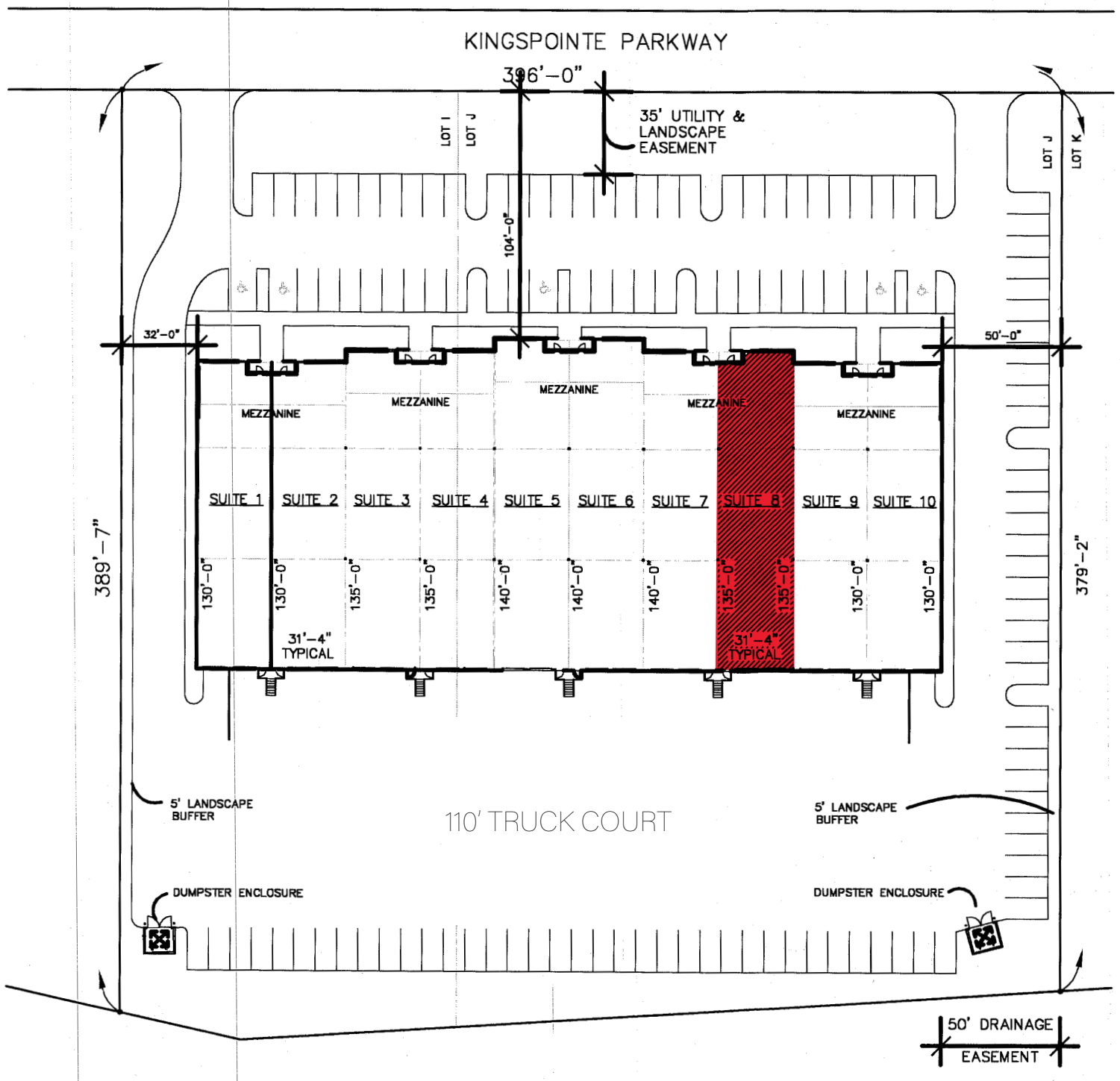
O: 954-418-7198 • C: 954-336-8001 • E: jc@jccrc.com
3645 Park Central Boulevard North, Pompano Beach, FL 33064





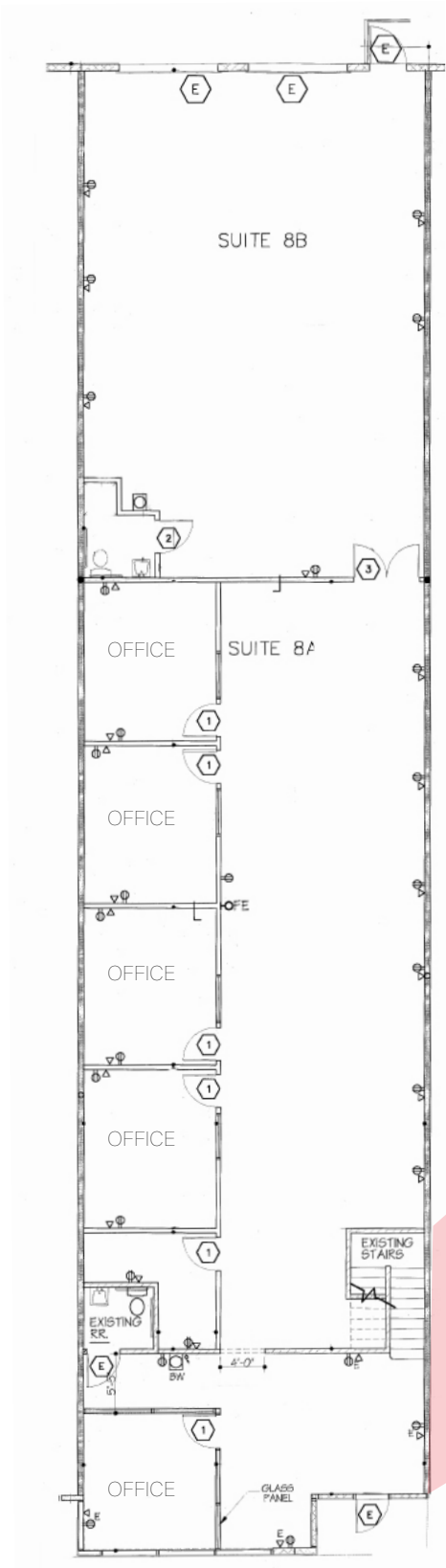
Contact: JC Conte

O: 954-418-7198 • C: 954-336-8001 • E: jc@jccrc.com
3645 Park Central Boulevard North, Pompano Beach, FL 33064



Contact: JC Conte

O: 954-418-7198 • C: 954-336-8001 • E: jc@jccrc.com
 3645 Park Central Boulevard North, Pompano Beach, FL 33064



Contact: JC Conte

O: 954-418-7198 • C: 954-336-8001 • E: jc@jccrc.com
 3645 Park Central Boulevard North, Pompano Beach, FL 33064