



rcrc.com

5402 N KEYSTONE AVENUE

INDIANAPOLIS, IN 46220

LEASE

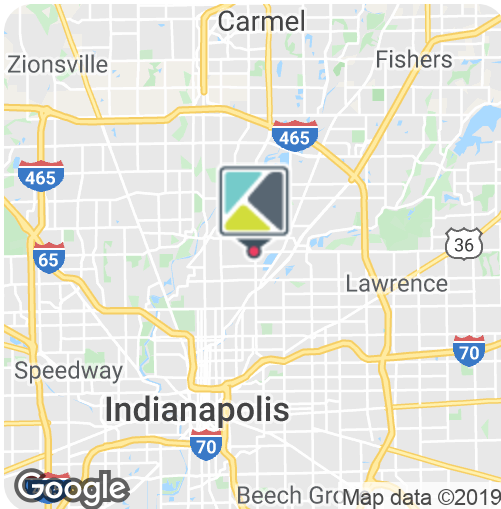
CAR REPAIR

RETAIL

OFFICE



3,800 SF BUILDING - CAR REPAIR / RETAIL / OFFICE



LEASE RATE

NEGOTIABLE

AVAILABLE SF

3,800 SF

Located on the NW corner of the fully-signalized intersection of Keystone Avenue and 54th Street. The approximately 3,800 square foot building has 4 car service bays and is ideally located in a densely populated and highly developed commercial corridor with exposure to over 27,000 VPD. The building could also be converted to retail or office space.

- \* Zoned C5
- \* Over 27,000 VPD
- \* Population of 93,000 within 3 miles with Average Household Income of over \$84,000

in t f i v #growIndiana

PATRICK O'HARA

Senior Vice President of Retail Services

O 317.663.6076

C 317.796.4733

pat.ohara@rcrc.com

WHITNEY GURMAN ROBERTS

Associate

O 317.663.6542

C 317.914.7978

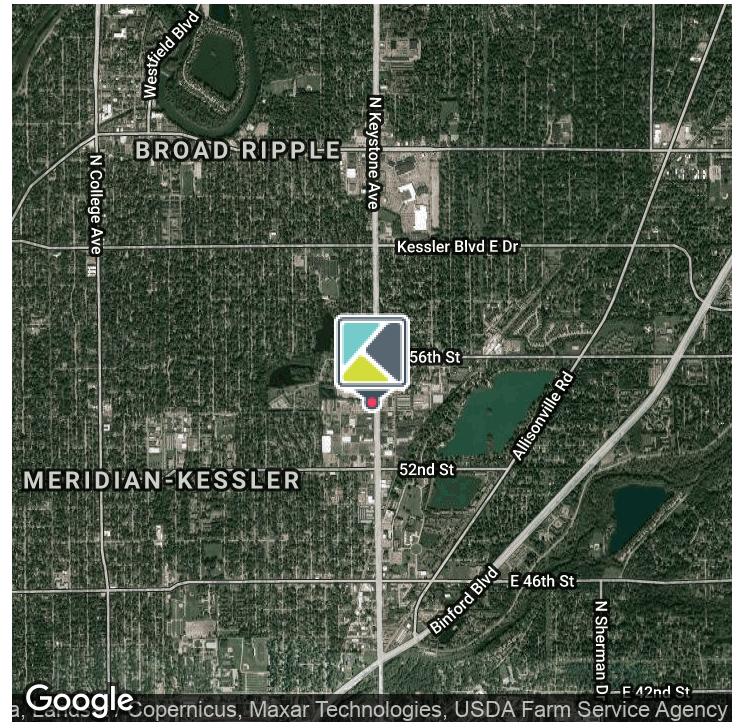
whitney.roberts@rcrc.com

# 5402 N KEYSTONE AVENUE

INDIANAPOLIS, IN 46220

Area Businesses include:

Meijer	Walgreens
Target	Panera Bread
Lowe's	Wendy's
Dollar Tree	McDonald's
Citi Trends	AutoZone
Planet Fitness	Aldi
LA Fitness	
Landmark Cinemas	



## OFFERING SUMMARY

Lease Rate:	Negotiable
Building Size:	3,800 SF
Available SF:	3,800 SF
Zoning:	C5
Market:	Indianapolis

## DEMOGRAPHICS

	3 MILES	5 MILES
Total Population	92,992	226,548
Average HH Income	\$84,612	\$75,289