

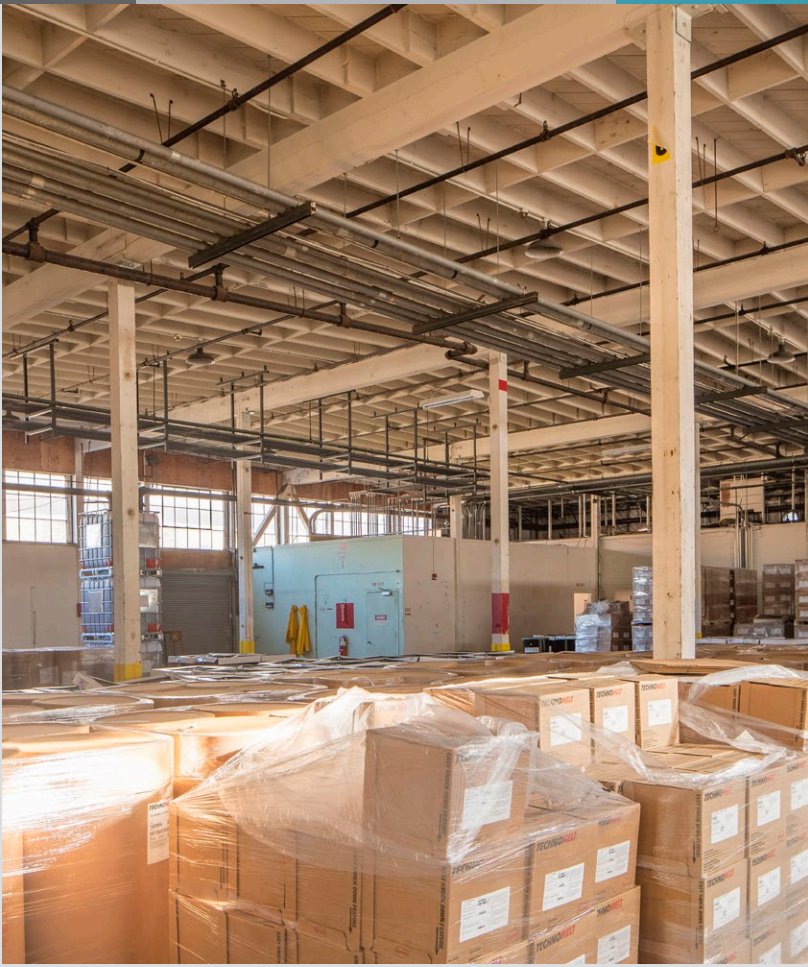
742 GRAYSON

R & D / Life Science / Manufacturing / Warehouse
± 10,000 – ± 65,000 SF on 2.30 Acres

West Berkeley, CA

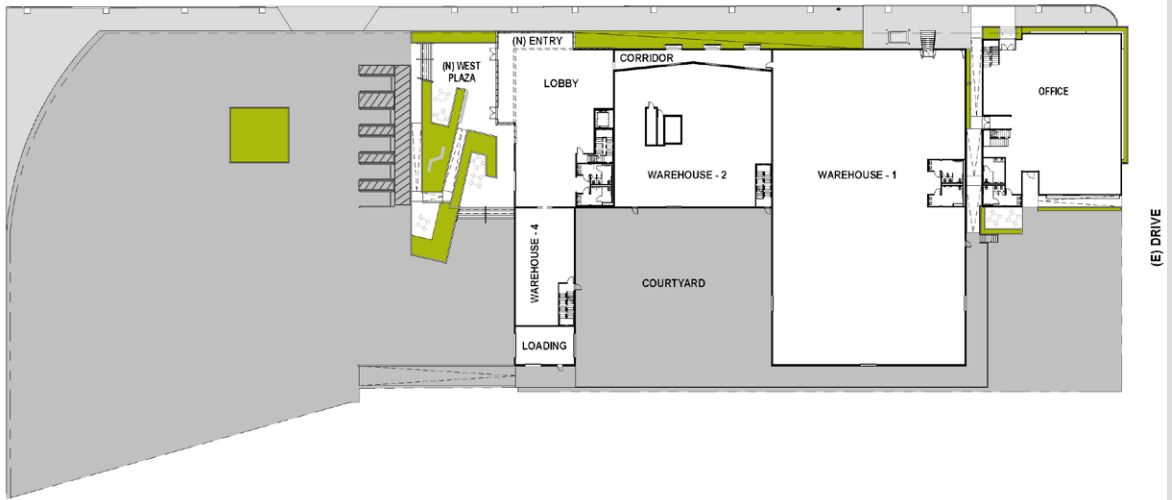


CBRE

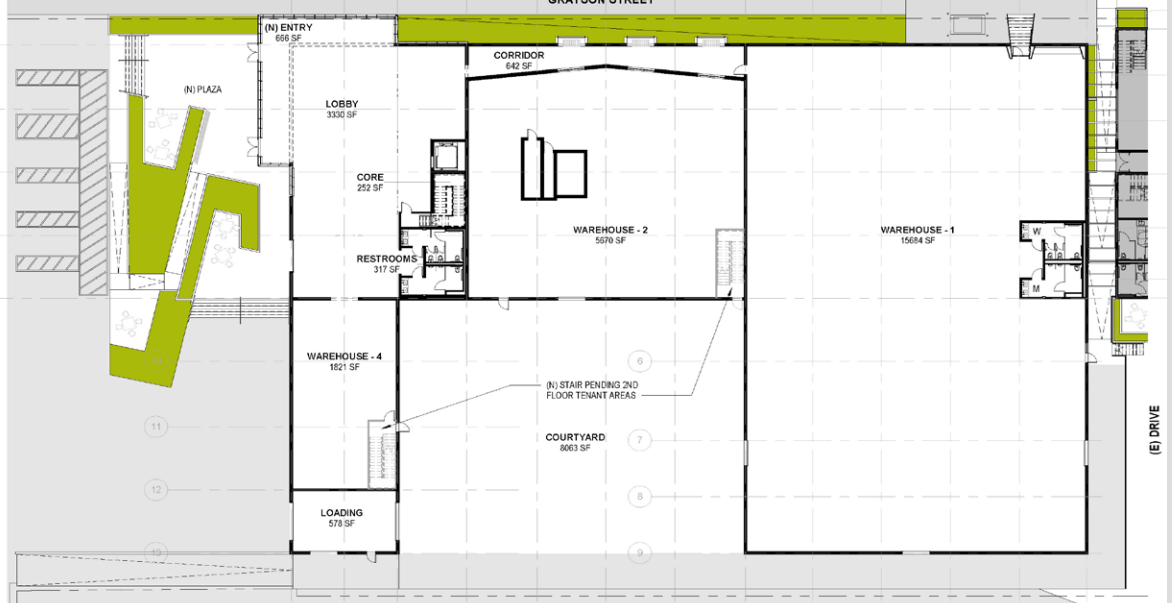




GRAYSON STREET



GRAYSON STREET



GRAYSON STREET



AMENITIES

AVAILABILITIES

TRANSPORTATION

NEIGHBORHOOD

IN THE HEART OF WEST BERKELEY AMENITIES

FREE
PARKING

ACCESS TO
WEST
BERKELEY


10+ HOTELS
WITHIN 2 MILES
OF PROPERTY

Berkeley
UNIVERSITY OF CALIFORNIA

10 MINUTE
SHUTTLE
RIDE TO

BAY
TRAILS

HOME TO
BERKELEY'S
INNOVATION
CENTERS

LOCATED
ADJECENT TO
1M SF LIFE
SCIENCE
CLUSTER

WORLD
CLASS
FOOD

CBRE





 PARKING AREA (49,020 SF)

R&D BUILDING

-  1-STORY AREAS (26,773.7 SF)
-  2-STORY AREAS (9,689.4 x 2 = 19,378.8 SF)
-  LOBBY & MISCELLANEOUS (1,489.6 SF)

TOTAL 47,642.1 SF

OFFICE BUILDING

-  1-STORY AREA (4,162.7 SF)
-  2-STORY AREAS (1,306.6 X 2 = 2,613.2 SF)
-  LOBBY & MISCELLANEOUS (447 SF)

TOTAL 7,222.9 SF

AMENITIES

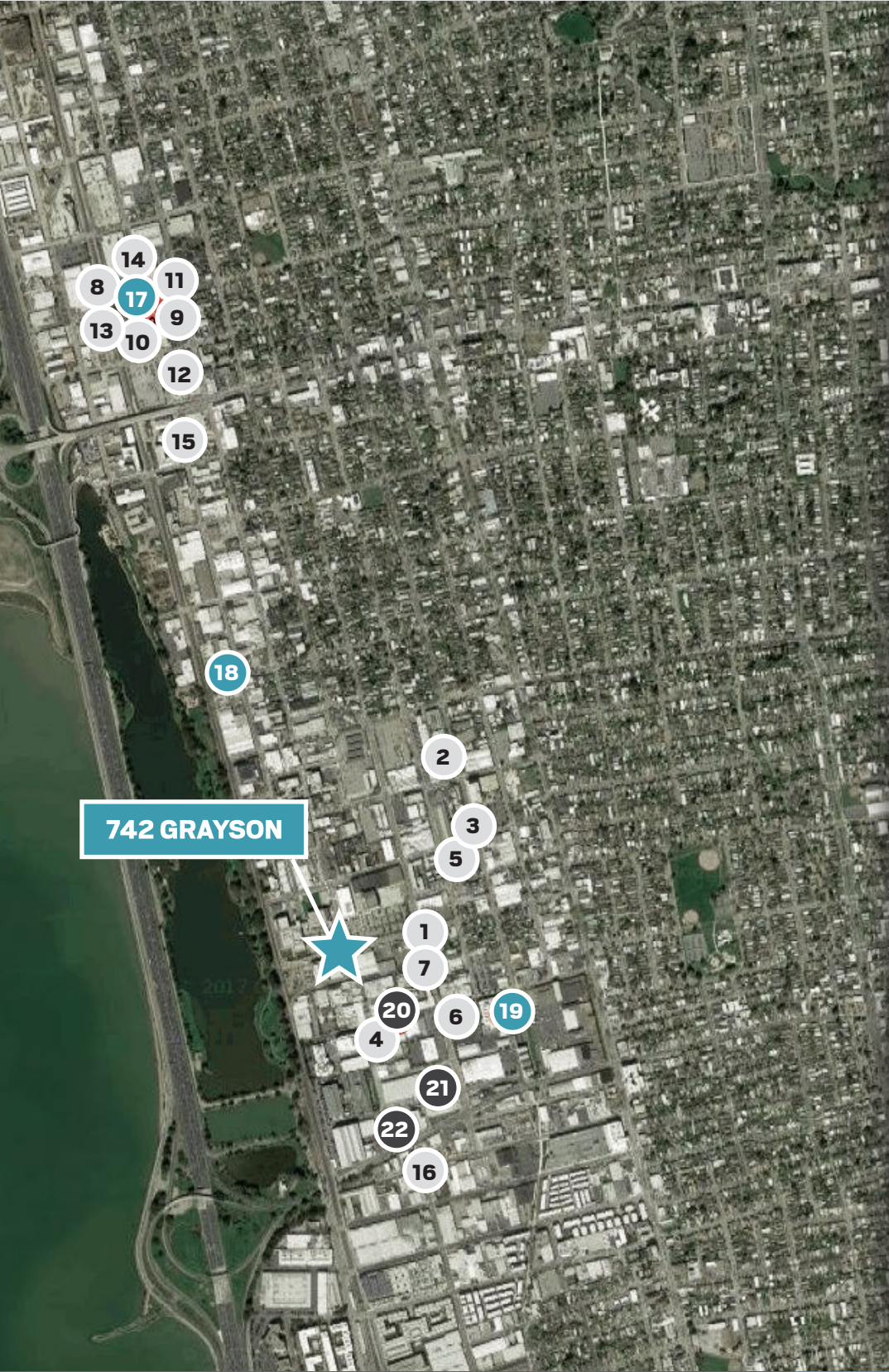
AVAILABILITIES

TRANSPORTATION

NEIGHBORHOOD



742 GRAYSON



RESTAURANTS

- 1** 900 Grayson
- 2** Westside Cafe
- 3** Juan's Place
- 4** Riva Cucina
- 5** Standard Fare
- 6** MINT
- 7** Uncommon Grounds
- 8** Iyasare
- 9** Bette's Oceanview
- 10** Zut Tavern
- 11** Cafe M
- 12** Spengers
- 13** Tacubaya
- 14** Pompette
- 15** Sierra Nevada Torpedo Room
- 16** Prizefighter

GROCERY

- 17** Market Hall Foods
- 18** Vik's
- 19** Berkeley Bowl

SCHOOLS + GYMS

- 20** Aquatic L Pre-School
- 21** Kid's Gym
- 22** Berkeley Iron Works

742 GRAYSON





© 2018 CBRE, Inc. All rights reserved. This information has been obtained from sources believed reliable, but has not been verified for accuracy or completeness. You should conduct a careful, independent investigation of the property and verify all information. Any reliance on this information is solely at your own risk. CBRE and the CBRE logo are service marks of CBRE, Inc. and/or its affiliated or related companies in the United States and other countries. All other marks displayed on this document are the property of their respective owners. Photos herein are the property of their respective owners and use of these images without the express written consent of the owner is prohibited. PMStudio_February2018

CBRE

MIKE RAFFETTO

Senior Vice President
Lic. 01201289
+1 510 874 1994
mike.raffetto@cbre.com

MARK KOL

Senior Vice President
Lic. 01251158
+1 510 874 1992
mark.kol@cbre.com

CBRE, Inc.

1111 Broadway
Suite 1850
Oakland, CA 94607
www.cbre.us