

VILLAGES AT SANTA CRUZ VALLEY

EXCLUSIVE LISTING | TOLTEC HIGHWAY & ALSDORF ROAD, ELOY, ARIZONA

LOCATION Property is located W-NWC of Toltec Highway & Alsdorf Road in Eloy, Arizona

PRICE Submit (Seller Financing Available)

SIZE ±260 acres

ZONING R1-6 Medium-High Density Residential (6,000 sq.ft.)

TAXES \$8,444.84 (2017)

SCHOOLS

Toltec Elementary School District
Casa Grande High School District

UTILITIES

Power - Arizona Public Service (APS)
Water - City of Eloy
Sewer - City of Eloy
Gas - Southwest Gas

DEVELOPMENT AGREEMENT

Click here to view the [Villages at Santa Cruz Valley Development Agreement](#).

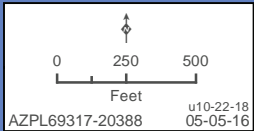
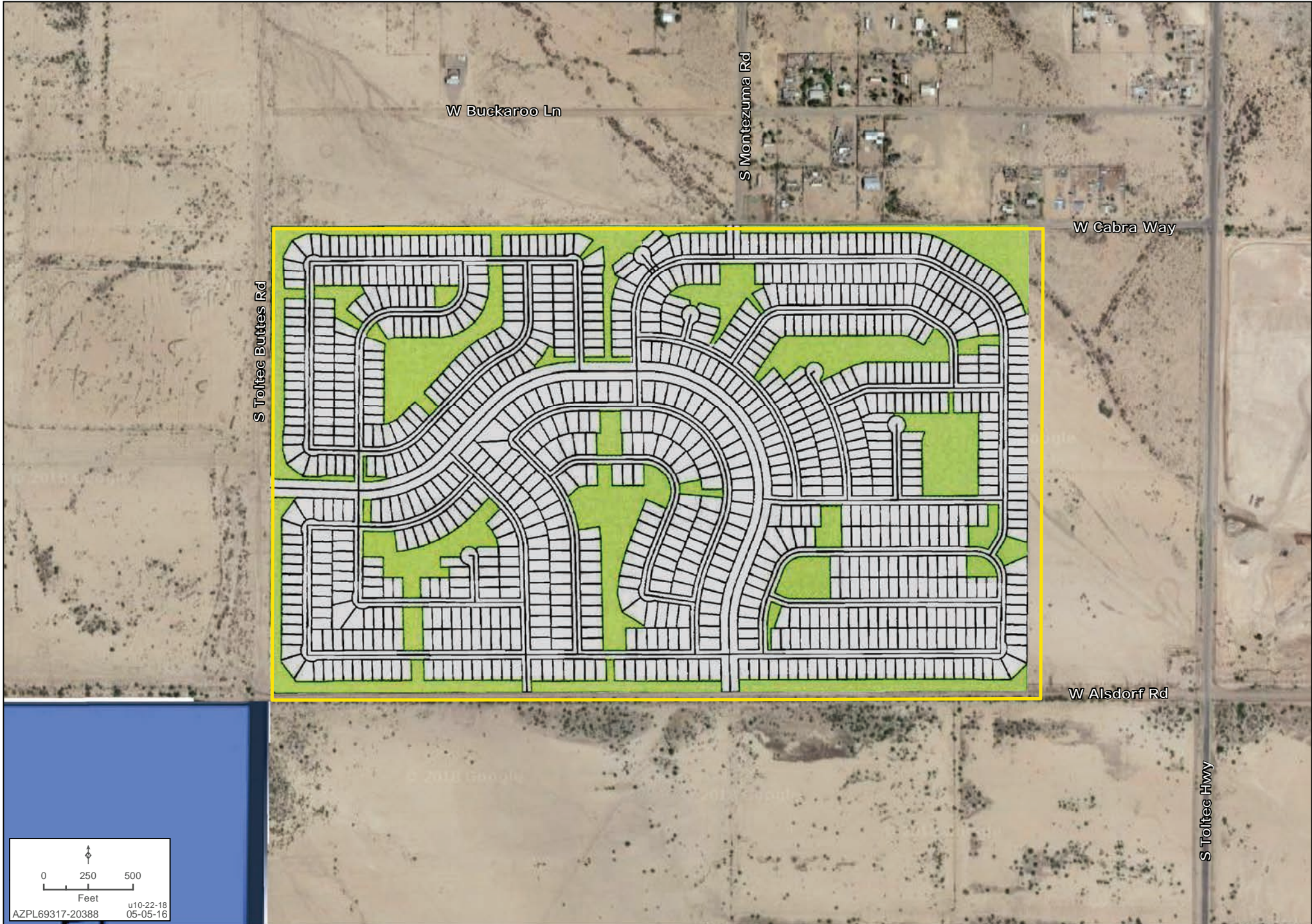
Subject

Ben Heglie | bheglie@landadvisors.com Ryan Semro | rsemro@landadvisors.com Bret Rinehart | brinehart@landadvisors.com
4900 North Scottsdale Road, Suite 3000, Scottsdale, Arizona 85251 ph. 480.483.8100 | www.landadvisors.com

The information contained herein is from sources deemed reliable. We have no reason to doubt its accuracy but do not guarantee it. It is the responsibility of the person reviewing this information to independently verify it. This package is subject to change, prior sale or complete withdrawal. AZPL69317-2.11.2019

PROPERTY DETAIL MAP

Ben Heglie | Ryan Semro | Bret Rinehart | 480.483.8100 | www.landadvisors.com



REGIONAL MAP

Ben Heglie | Ryan Semro | Bret Rinehart | 480.483.8100 | www.landadvisors.com

