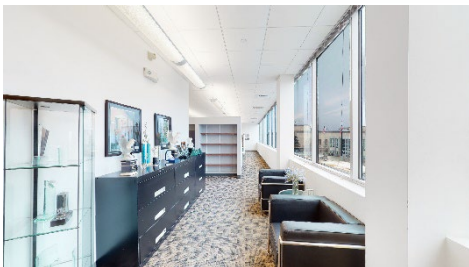


NEW LISTING!

43 Harvard Street, Worcester, MA



7,000 sf (subdividable 2,000 sf) - **\$18.95/sf**

Totally GROSS rent includes Janitorial, Electric, HVAC & Parking!

43 Harvard Street is a professionally managed, well maintained, modern office building with parking.

Excellent location in close proximity to Worcester's Central Business District and easy access to Route 9 and Interstate 290.

Brokers Protected/Full Commissions Paid!

For more information and to schedule a viewing:



Cutler

Management Corp

(508) 792-1111

www.CutlerManagement.com

Proudly serving Central Massachusetts since 1979

We believe this information to be accurate. We are not, however responsible for errors or omissions, prior sales, leases or price changes, and we reserve the right to withdraw this property from the market without notice. Square Footage calculations are approximate and include an attributable.