



Executive Office Space for Lease

25107 Genesee Trail Rd. Golden, CO 80401

Denver Commercial Properties is pleased to present this executive office space for lease. Situated on the ridge overlooking the Gateway to the Rockies, this office building in Genesee Park is perfect for that professional business client that enjoys the simplicity of officing in the foothills yet still being only 15 min. to Downtown Golden or 25 minutes to Downtown Denver. More importantly only 45 minutes to skiing. This building has office space from 150 to 2000 square feet, fully renovated in the last few years. The building reflects modern and innovative spaces, unbelievable views, small tenant mix so very private and quiet environment plus we are pet friendly.

To schedule a showing call: Gary at 303-907-6200 or email: gary@dcp1.com

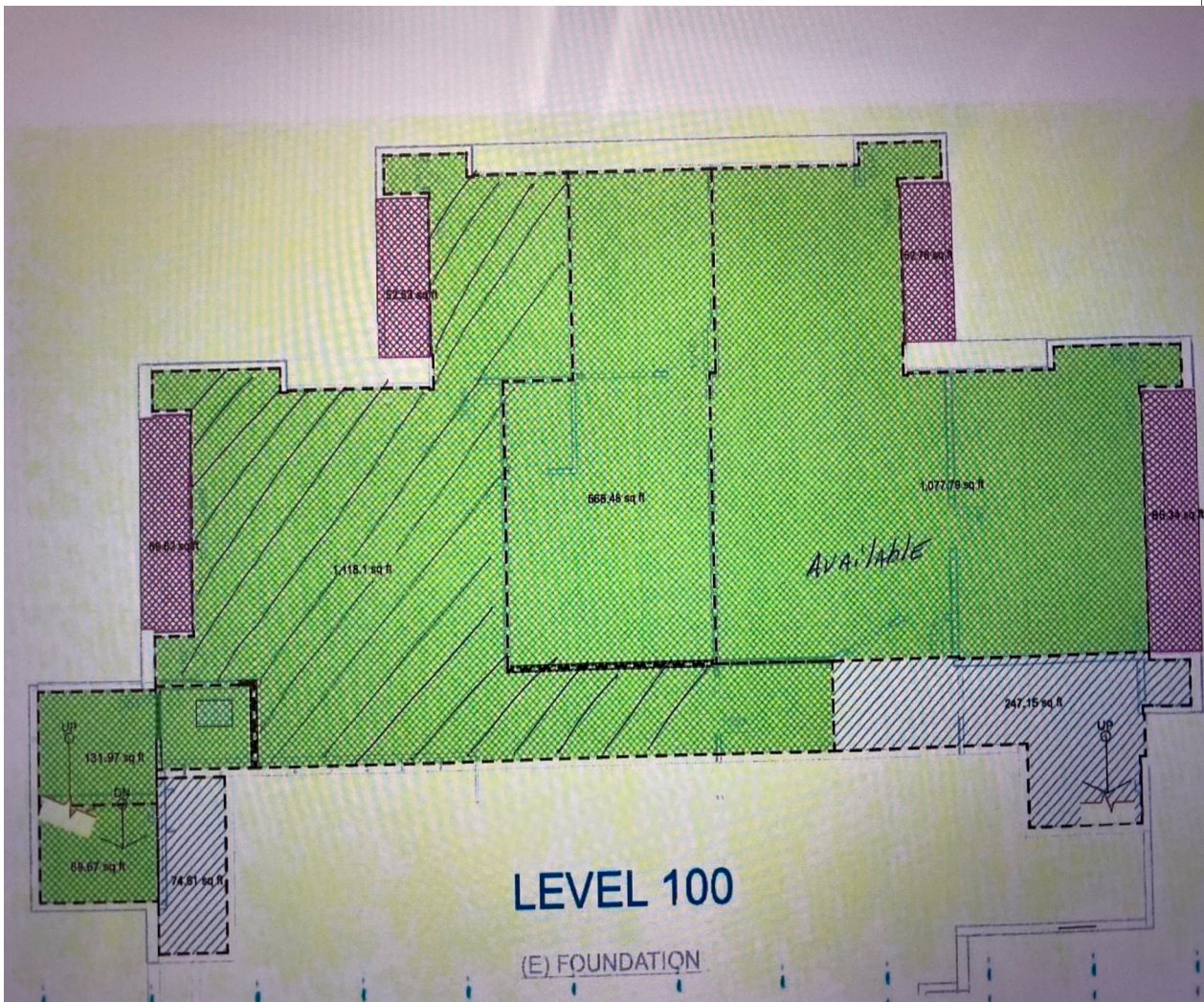


Available Space for Lease

Level 100 * Suite 101 * 1794.39 USF / 2434.98 RSF / \$ 19.00 SF

Level 200 * Suite 204 * 237.69 USF / 322.54 RSF / \$30.00 SF

Level 200 * Suite 205 * 430.00 USF / 583.51 RSF / \$32.00 SF

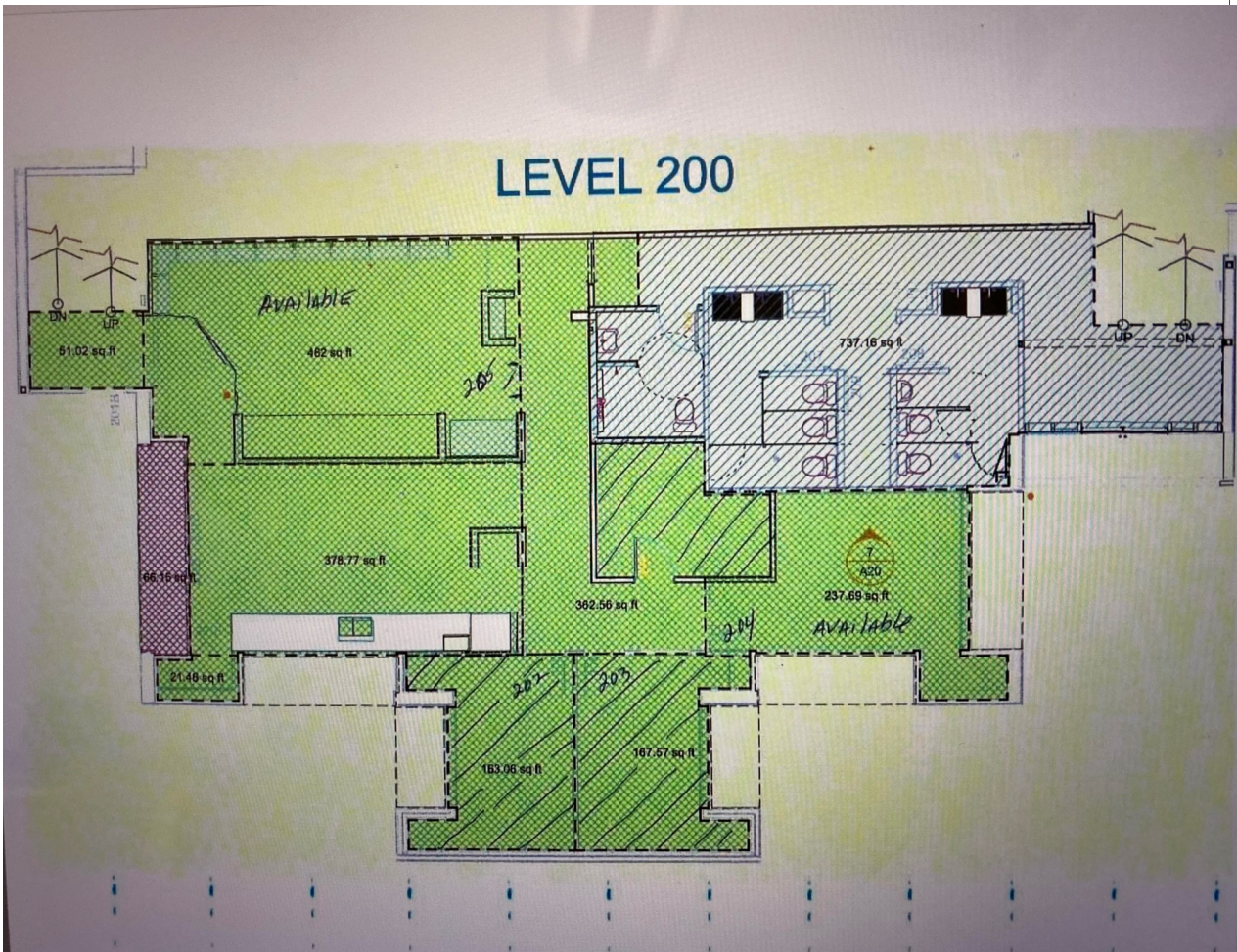


Available Space for Lease

Level 100 * Suite 101 * 1794.39 USF / 2434.98 RSF / \$ 19.00 SF

Level 200 * Suite 204 * 237.69 USF / 322.54 RSF / \$30.00 SF

Level 200 * Suite 205 * 430.00 USF / 583.51 RSF / \$32.00 SF



Denver Commercial Properties.com

714 S Pearl Street Dever, CO 80229 Email: gary@dcp1.com Cell: 303-907-6200