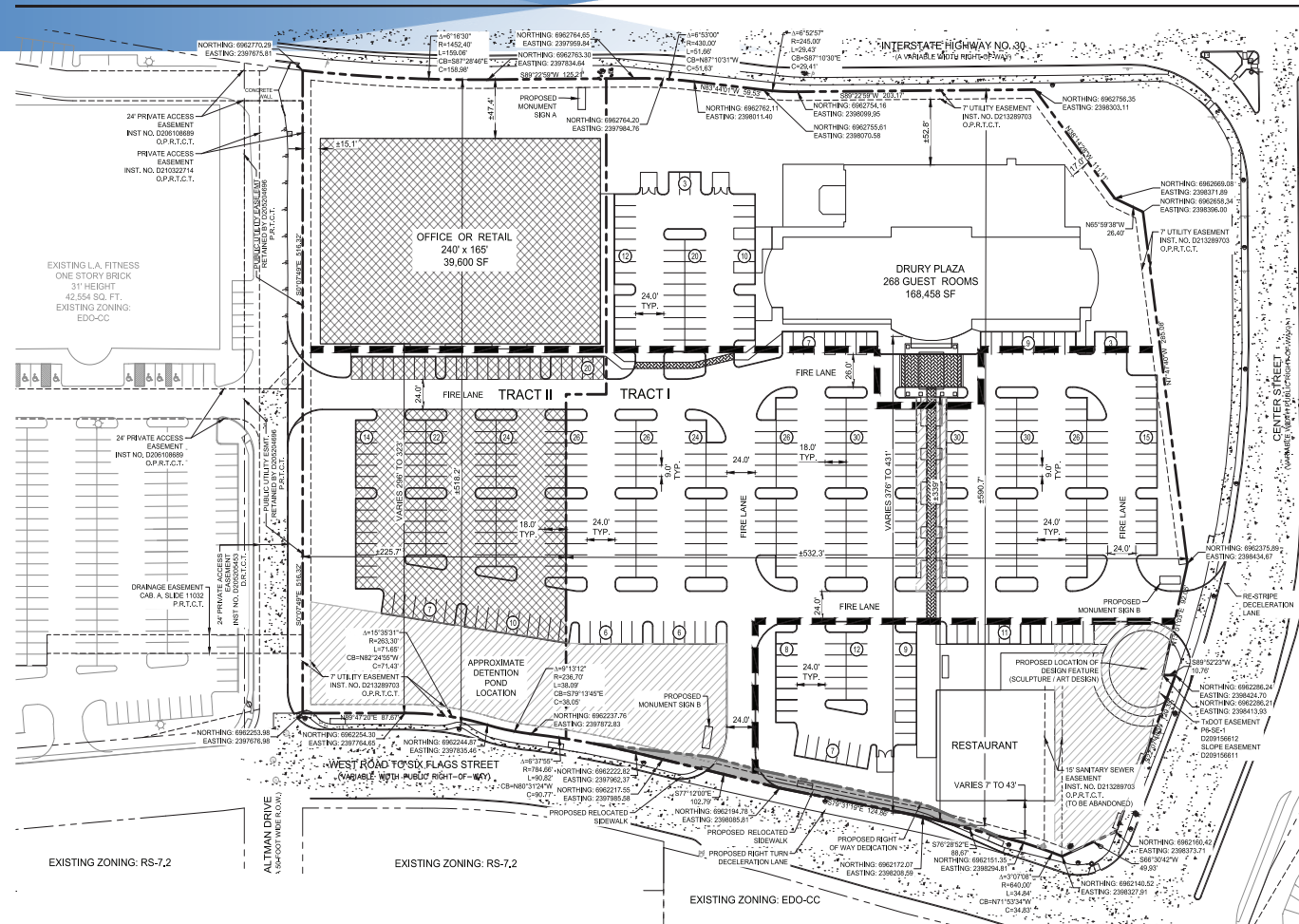


COMING SOON
NEW RETAIL
DEVELOPMENT



NOW LEASING / PAD SITES AVAILABLE

LINCOLN SQUARE WEST

SWC CENTER STREET & I-30 | ARLINGTON, TEXAS

DEMOGRAPHICS/TRAFFIC COUNTS

	1 Mile	3 Mile	5 Mile
Population:	19,695	114,100	268,535
Average Income:	\$49,346	\$59,044	\$58,628
Employment:	11,461	66,727	141,350
I-30:	130,000 vpd		
Collins Street:	45,000 vpd		
Road to Six Flags:	15,000 vpd		
Center Street:	9,512 vpd		

KEY FEATURES

- NEW PLANNED RETAIL DEVELOPMENT
- Located in Arlington's Entertainment District, near the Cowboys Stadium (Dallas Cowboys), Six Flags Over Texas, Hurricane Harbor and the Ballpark at Arlington (Texas Rangers)
- The project draws from a strong mix of high-end retailers, family retailers and restaurants
- 40,000 SF of retail available
- Future 268 Room Drury Hotel
- Corner pad site Available

FOR INFORMATION

Steve Williamson, CCIM
972.774.2511
mason.bishop@transwestern.com

Larry Jordan
972.774.2539
larry.jordan@transwestern.com

FOR INFORMATION

Steve Williamson, CCIM
972.774.2511
steve.williamson@transwestern.com

Larry Jordan
972.774.2539
larry.jordan@transwestern.com



FOR INFORMATION

LINCOLN SQUARE WEST

SWC CENTER STREET & I-30 | ARLINGTON, TEXAS



Color Rendering of
Lincoln Square West
Planned Development

TRANSWESTERN DALLAS | 5001 SPRING VALLEY ROAD, SUITE 400W | DALLAS, TX 75244 | 972.744.2500 | TRANSWESTERN.COM

The information provided herein was obtained from sources believed reliable; however, Transwestern makes no guarantees, warranties, or representations as to the completeness or accuracy thereof. The presentation of this property is submitted subject to errors, omissions, change of price or conditions, prior sale or lease, or withdrawal without notice. Copyright © 2017 Transwestern.