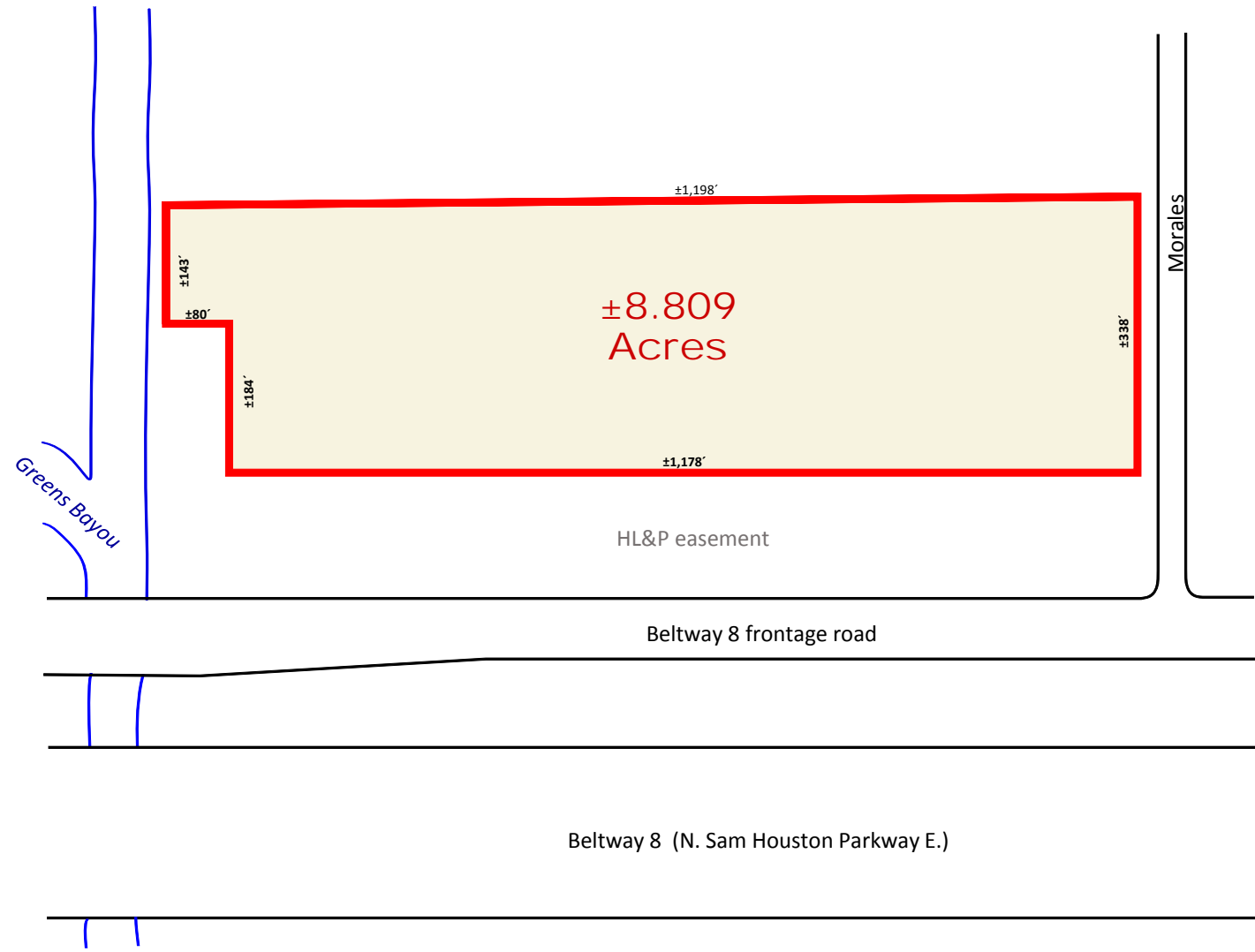


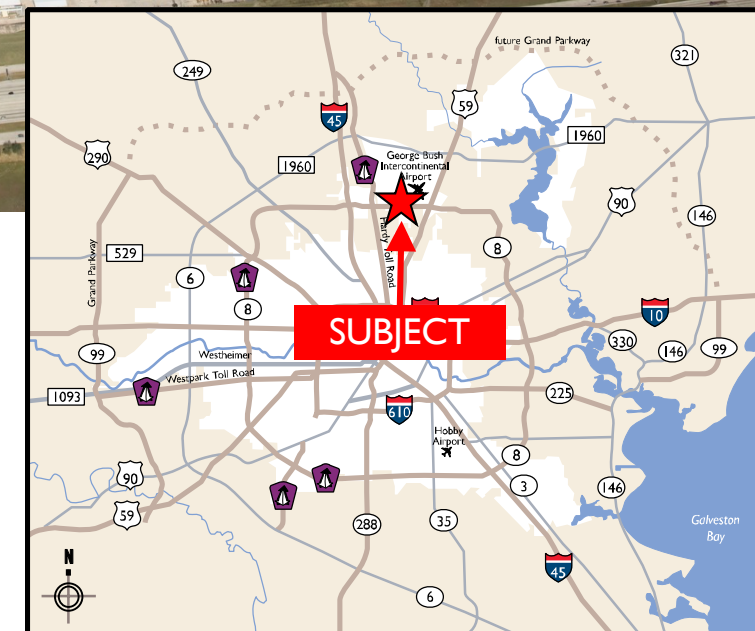
±8.809 Acres of Land (per survey)
Beltway 8 & Morales



±8.809 Acres of Land (per survey)
Beltway 8 & Morales



LAND NEAR IAH FOR SALE



Cushman & Wakefield is pleased to offer for sale this ±8.809 acre development site near Bush Intercontinental Airport.

For more information, contact:

David L. Cook, SIOR, CRE (713) 963 2888 david.cook@cushwake.com
Scott E. Miller (713) 963 2835 scott.miller@cushwake.com
Jeff G. Peden, SIOR (713) 963 2880 jeff.peden@cushwake.com

Cushman & Wakefield
 Licensed Real Estate Brokers
 1330 Post Oak Boulevard | Suite 2700
 Houston, TX 77056
 www.cushmanwakefield.com

Cushman & Wakefield © 2018. No warranty or representation, express or implied, is made to the accuracy or completeness of the information contained herein, and same is submitted subject to errors, omissions, change of price, rental or other conditions, withdrawal without notice, and to any special listing conditions imposed by the property owner(s). As applicable, we make no representation as to the condition of the property (or properties) in question.

For more information, contact:

David L. Cook, SIOR, CRE (713) 963 2888 david.cook@cushwake.com
Scott E. Miller (713) 963 2835 scott.miller@cushwake.com
Jeff G. Peden, SIOR (713) 963 2880 jeff.peden@cushwake.com

Cushman & Wakefield
 Licensed Real Estate Brokers
 1330 Post Oak Boulevard | Suite 2700
 Houston, TX 77056
 www.cushmanwakefield.com

Cushman & Wakefield © 2018. No warranty or representation, express or implied, is made to the accuracy or completeness of the information contained herein, and same is submitted subject to errors, omissions, change of price, rental or other conditions, withdrawal without notice, and to any special listing conditions imposed by the property owner(s). As applicable, we make no representation as to the condition of the property (or properties) in question.

±8.809 Acres of Land Beltway 8 & Morales

Property Details

- ±8.809 Acres of Land (per survey)
- ±338' frontage on Morales
- Approximately 2 miles from Bush Intercontinental Airport, and 3 miles from the Hardy Toll Road
- City of Houston Utilities: Water available 2,100' north on Morales and sewer 4,500' east of JFK Blvd.

Demographics - 2017

	3 miles	5 miles
Avg. HH Income	\$41,534	\$47,245
Total Population	49,188	184,346
Employees	77,579	131,043

Traffic Counts

- Beltway 8, east of Morales 164,800 vehicles/day
- Beltway 8, west of Morales 191,200 vehicles/day
- Morales, north of Beltway 8 1,212 vehicles/day
- 2016 Average daily traffic counts

SOURCE TxDot:

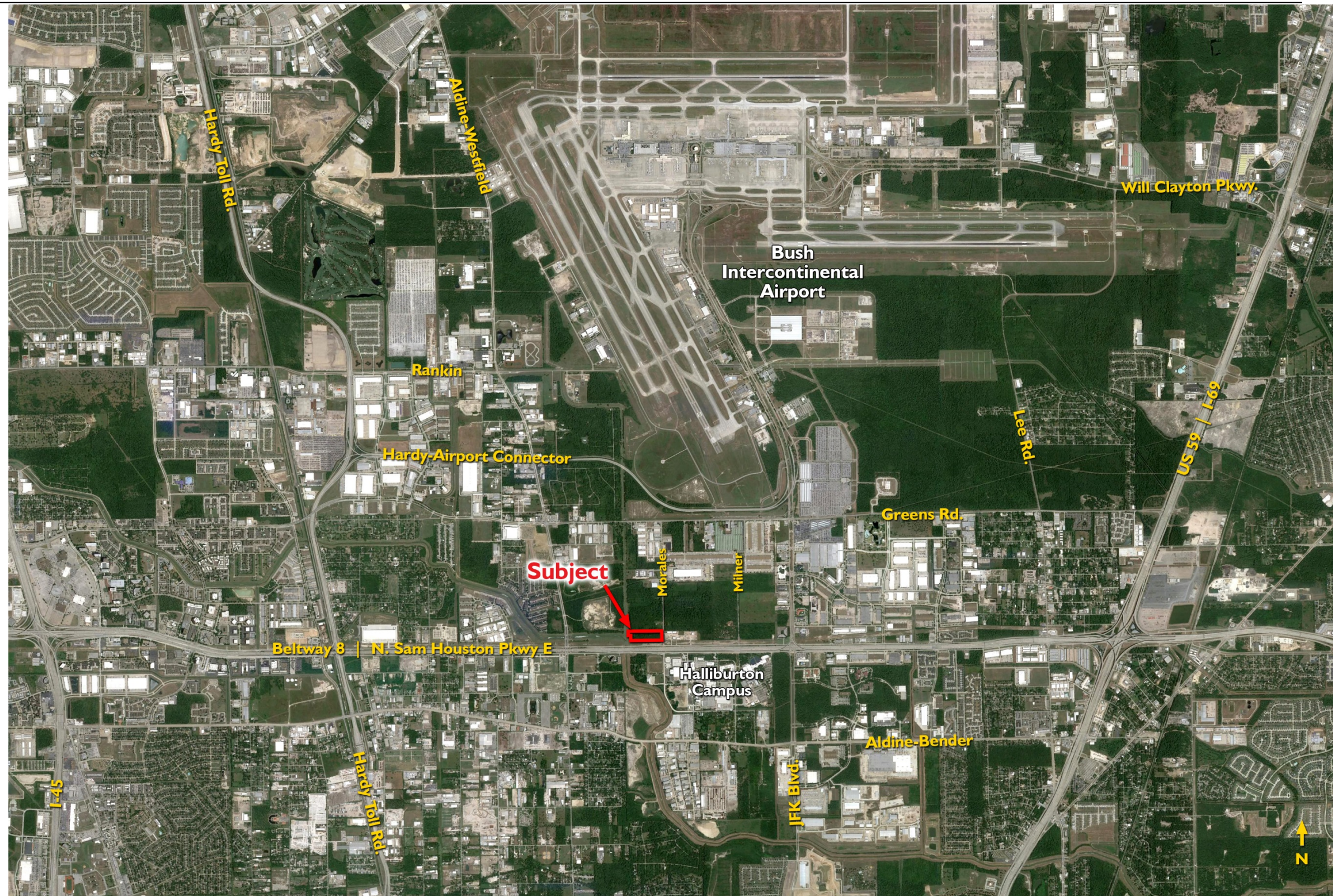
The subject site is located across Beltway 8/N. Sam Houston Parkway E. from the 89-acre Halliburton Headquarters campus. Their expansion plan anticipates the addition of nearly 900 jobs to the 1,800 employees already there

The Greenspoint Business Center is nearby to the west where more than 6,000 businesses are located

Amenities in the Area: Restaurants, Parks, Hotels, Golf Courses

Key Map: 374S

Call Broker for Pricing



For more information, contact:

David L. Cook, SIOR, CRE (713) 963 2888 david.cook@cushwake.com
 Scott E. Miller (713) 963 2835 scott.miller@cushwake.com
 Jeff G. Peden, SIOR (713) 963 2880 jeff.peden@cushwake.com

Cushman & Wakefield of Texas, Inc.
 1330 Post Oak Boulevard | Suite 2700
 Houston, TX 77056

cushmanwakefield.com

