

401 Baker Boulevard

Tukwila, WA



Contact

Al Robertson
206.248.7322
alr@kiddermathews.com

Features

- Building RSF: Approx 17,400 total RSF of area which includes approx 4,319 SF of office showroom

- Land area: 1.14 acres with approx 48 parking spaces

- Year built: 1963 original
1989 improved

- Zoning: TUC

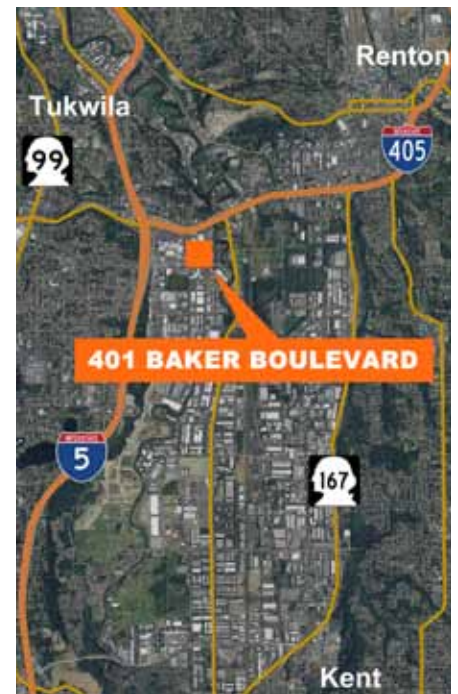
- Construction: CTU

- Truck access: 2 dock-high doors
1 ramp door

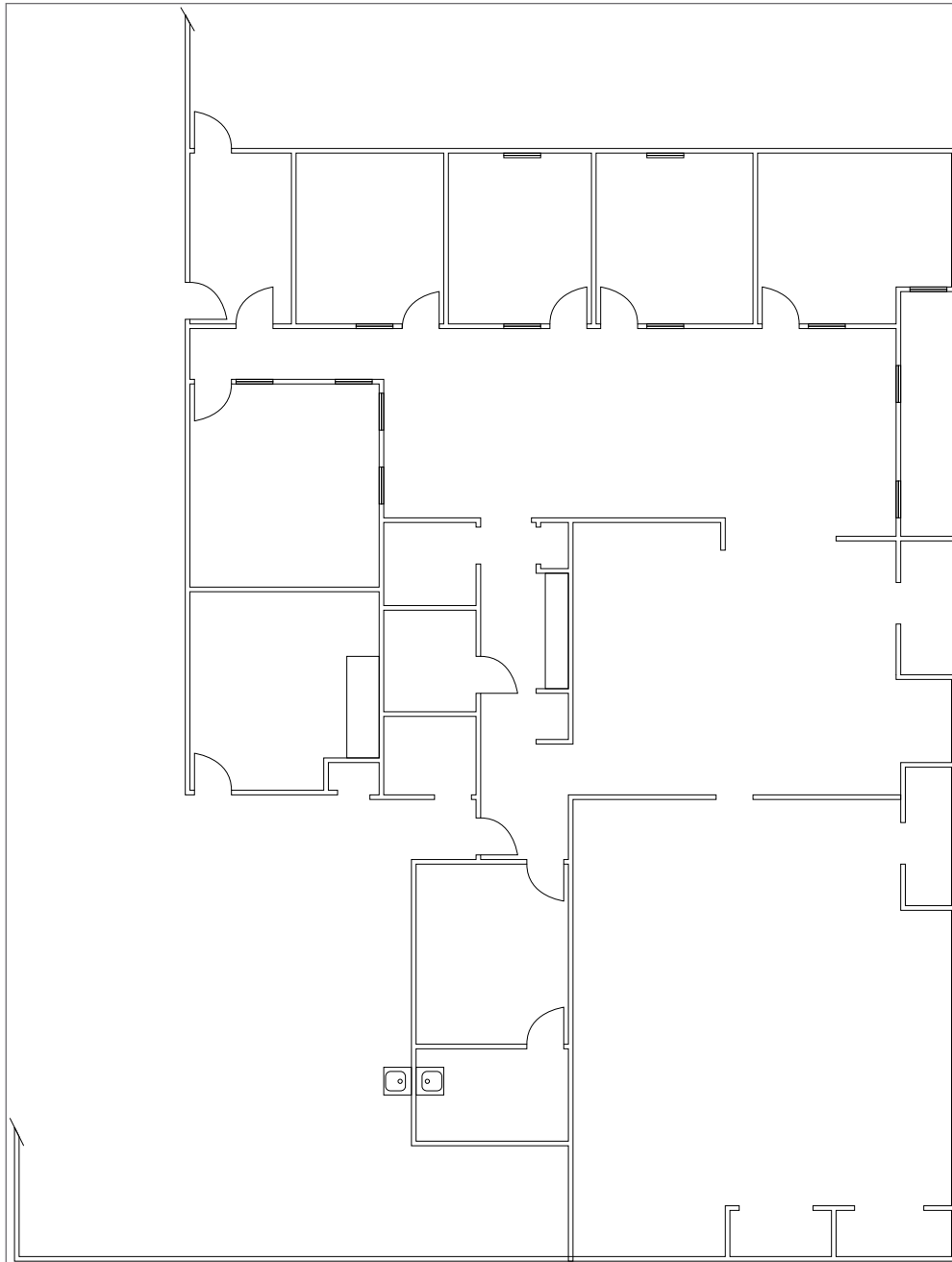
- Clear height: Approx 16' clear

- For lease: \$11,205.00 per month, NNN
Estimated NNN's \$0.14 PSF

Location



401 Baker Boulevard



Contact

Al Robertson
206.248.7322
alr@kiddermathews.com