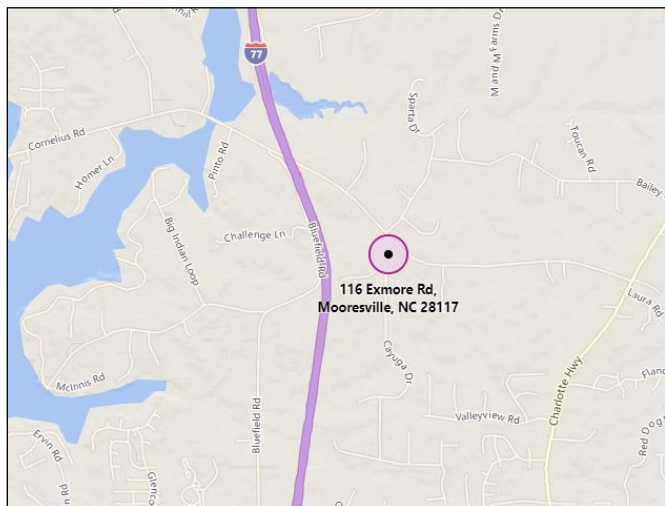


# 152 Pump Station Road—29 Acres +/-

Statesville, NC 28625

EquityCP.com



For more information or to schedule a tour, please contact:

**Frank Harmon**

[fharmonequitycp.com](mailto:fharmonequitycp.com)

704-799-9202 Office

704-677-5320 Cell

## AVAILABLE FOR SALE \$26,000 PER ACRE

The property is surrounded by hotels, restaurants, and big box retail centers. 29 acres with nice 4,000 sq. ft. building which would make a great office and/or clubhouse for the community. The new road improvements make this property a great location and investment. Approximately 29 Acres Zoned B-5 in Heavy

Retail area. Formerly, formerly Statesville Golf Center, with driving range. Inside City limits with Water and Sewer available. Commercial area at I-40 and US 21 in Statesville, NC. New interchange improvements completed adjacent to this site, opens up the visibility and access making this site great for development. Publix and new Ingles Super Mart nearby. Super Walmart Shopping center across the road (US 21).



**Equity Commercial Properties**

114 Morlake Dr.  
Suite 104  
Mooresville, NC

Office 704-799-9202  
EquityCP.com

# 152 Pump Station Road—29 Acres +/-

Statesville, NC 28625

EquityCP.com



**Equity Commercial Properties**

114 Morlake Dr.  
Suite 104  
Mooresville, NC

Office 704-799-9202  
EquityCP.com

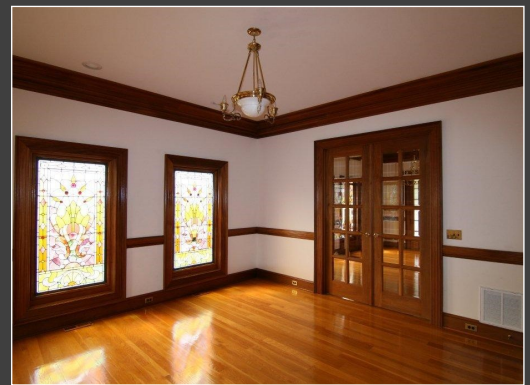
# Club House on Property

EquityCP.com



# Club House Upscale Interior

EquityCP.com



**Equity Commercial Properties**

114 Morlake Dr.  
Suite 104  
 Mooresville, NC

Office 704-799-9202  
EquityCP.com