

589 WASHINGTON AVENUE

CROWN HEIGHTS, BROOKLYN



**RETAIL SPACE
FOR LEASE**

CROWN HEIGHTS BROOKLYN

589 WASHINGTON AVENUE

SPACE HIGHLIGHTS

LOCATION

Between Pacific St & Dean St

SPACE

1,080 SF

CEILING HEIGHT

12 FT

FRONTAGE

18 FT

DIMENSIONS

18 FT x 60 FT

ZONING

R6A/C2-4

OCCUPANCY

Immediate

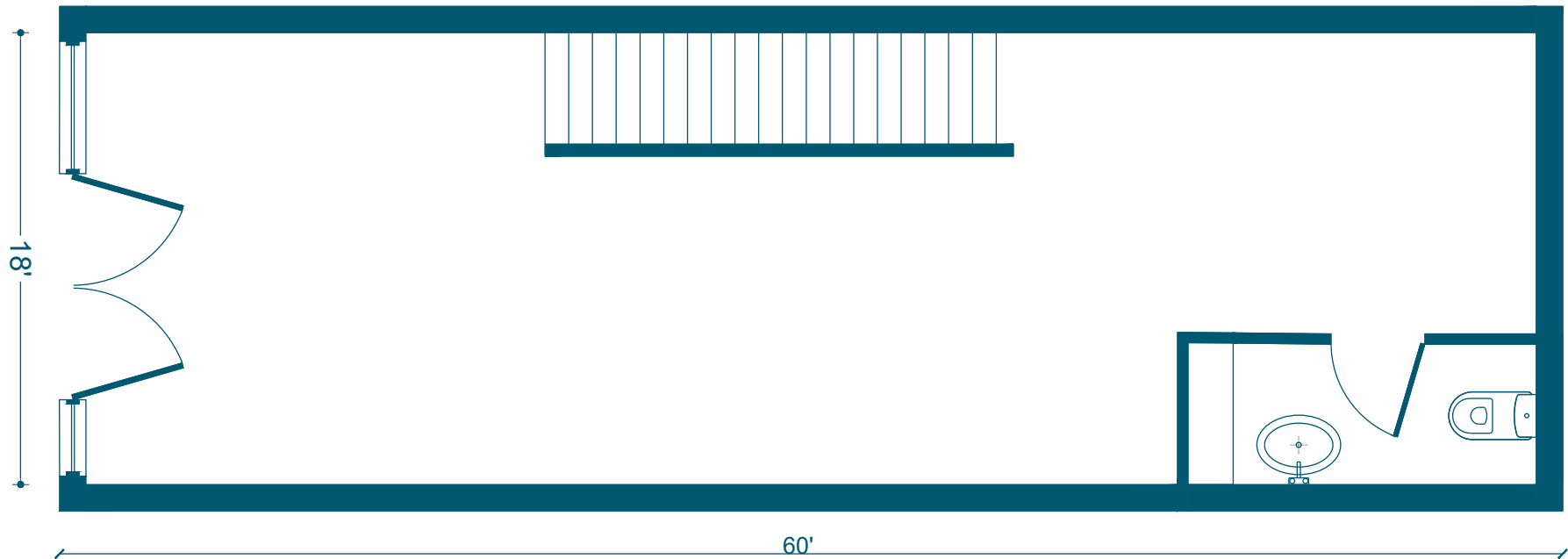
ASKING RENT

Upon Request

HIGHLIGHTS

- Prospect Heights Gem on Washington Ave
- Great Opportunity to Establish a Business in the Heart of Brooklyn
- Walking Distance to Botanical Gardens, Prospect Park, Barclays and Atlantic Terminal
- Area is Home to Upwardly Mobile Professionals and Young Families

FLOORPLANS & DETAILS



| | |
|-----------------------|---------------|
| Space | 1,080 SF |
| Ceiling Height | 12 FT |
| Frontage | 18 FT |
| Dimensions | 18 FT x 60 FT |

CROWN HEIGHTS BROOKLYN

EXISTING CONDITION

589 WASHINGTON AVENUE



NEIGHBORHOOD DEMOGRAPHICS



189,285

POPULATION
WITHIN 1-MILE
RADIUS



37 Years

AVERAGE
POPULATION
AGE



22.70%

POPULATION
GROWTH
SINCE 2010



\$106,693

AVERAGE HHI
WITHIN 1-MILE
RADIUS



5,345

TOTAL BUSINESSES
WITHIN 1-MILE
RADIUS



\$2 bn

ANNUAL SPENDING
WITHIN 1-MILE
RADIUS

CROWN HEIGHTS BROOKLYN

589 WASHINGTON AVENUE

NEIGHBORHOOD & TRANSPORTATION

NEIGHBORHOOD TENANTS

- LOOK by Plant Love House
- Sapid
- Blew Smoke
- Nate
- Art Cafe + Bar
- Gureje Inc
- Life In Its Poetic Form
- Ode to Babel
- Underhill Brooklyn Greek Eatery
- L.A. Burrito
- Aysgarth Brooklyn B & B
- Trout Recording
- Washington Avenue Cafe
- The BAKERY on Bergen
- Puerto Viejo
- Vegetarian palate
- Brooklyn Party Space
- Best Burger Palace
- The Atlantic Boat Club
- Crossfit Kingsboro

TRANSPORTATION

- 7 Min Walk at Clinton-Washington Avenue
- 13 Min Walk at Bergen Street



CROWN HEIGHTS BROOKLYN

589 WASHINGTON AVENUE

CONTACT

