

1800

JOHN F. KENNEDY BLVD

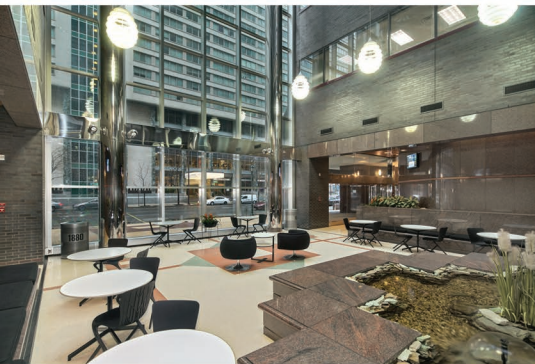
- » 475,000 SF twin-tower office complex linked by a glass atrium featuring a fountain & reflecting pool
- » "A" location across from the new Comcast Technology Center and Four Seasons Hotel
- » Easy access to 30th Street Station, I-76, & directly across from Suburban Station regional lines
- » Philadelphia based ownership with proactive property management team
- » Smaller floor plates ensure excellent presence for any size user

1800
AVAILABILITIES

18th flr: 6,091 SF
2nd flr: 5,937 SF

16th flr: 4,223 SF
14th flr: 3,299 SF
11th flr: 3,255 SF

1800
AVAILABILITIES



CONTACT

Daniel Gummel
215-496-9675 x117
dg@pernafrederick.com



Joseph Vitarello
215-496-9675 x113
jgv@pernafrederick.com

PERNAFREDERICK
COMMERCIAL REAL ESTATE