

645 Beachland Boulevard

Vero Beach, FL



Opportunity

Beachland Plaza is conveniently located on the north side of Beachland Boulevard just west of the A1A intersection in Vero Beach, Florida.

This complex offers a great beach side location with exceptional street side visibility, parking, and signage.

Available

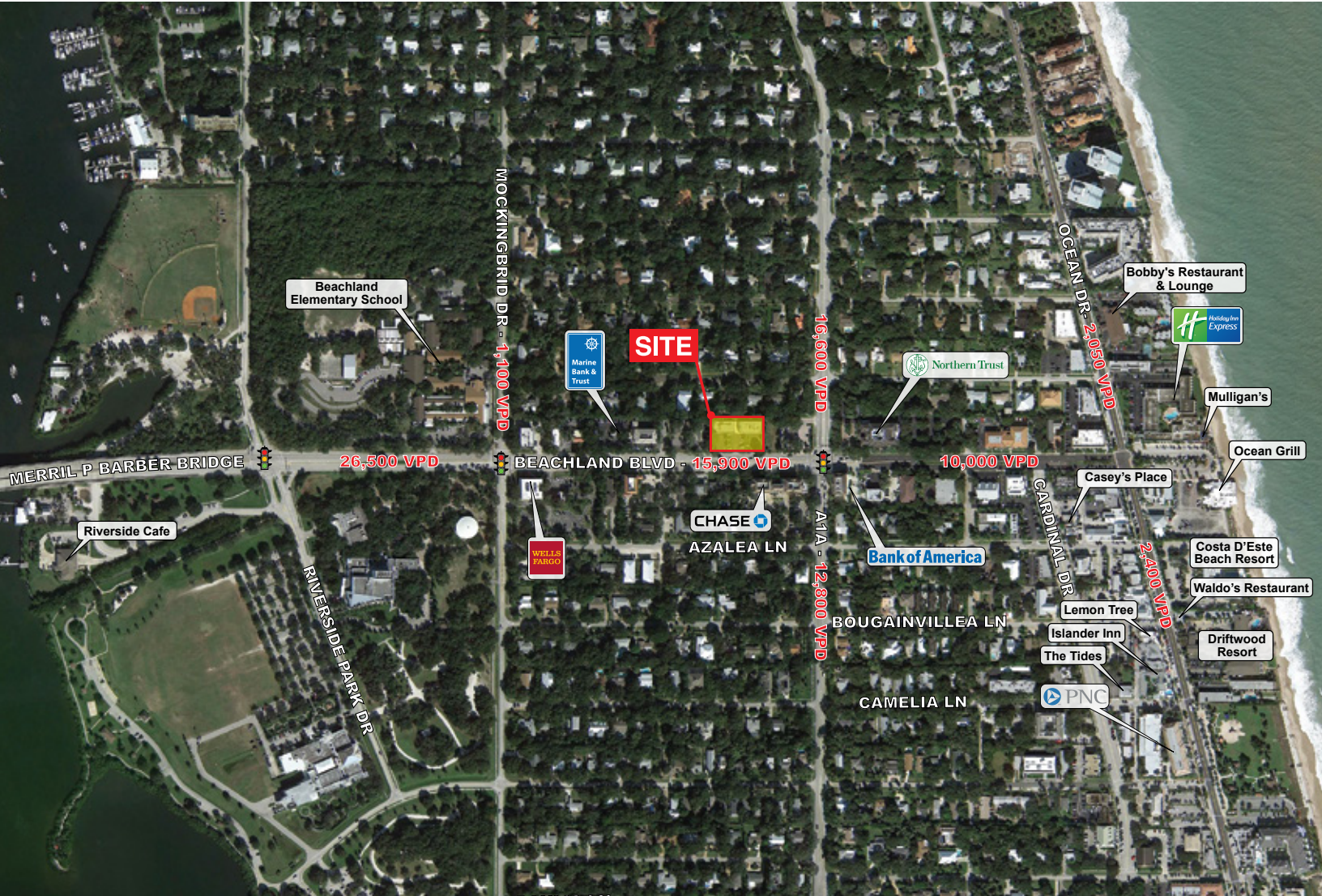
Suite 4:

- 840 sf
- \$27.00 psf

Property Highlights

Population:	20,717 (3-mile radius)
Daytime Population:	25,415 (3-mile radius)
Avg. HH Income:	\$92,574 (3-mile radius)
Traffic Counts:	15,900 cars daily

Derek Arden, Senior Associate
561 209 2711
derek.arden@avisonyoung.com



avisonyoung.com

Derek Arden, Senior Associate
561 209 2711
derek.arden@avisonyoung.com