

# OFFICE/WAREHOUSE

2558 WEST CUSTER ROAD, SALT LAKE CITY, UTAH 84104

AVAILABLE  
FOR LEASE



## PROPERTY HIGHLIGHTS

- 4,700 Total Square Feet
  - 926 Office Square Feet
  - 3,774 Warehouse Square Feet
- Loading: Two (2) Ground Level Doors (9' x 12')
  - One (1) Common Staging Dock Available
- Clear Height: 16'
- Column Spacing: 23' x 23'
- Power: 200 Amps 277/480 Volt 3 Phase
- Concrete Block Construction
- Fire Sprinklers
- Small Portable Walk-In Cooler
- Excellent Access to I-15, I-215, Bangerter Highway, and 2100 South
- Minutes From Salt Lake City International Airport

### ELI PRIEST

801.746.4746

eli.priest@ngkf.com

### KELSIE AKIYAMA

801.578.5504

kelsie.akiyama@ngkf.com



**Newmark  
Knight Frank**

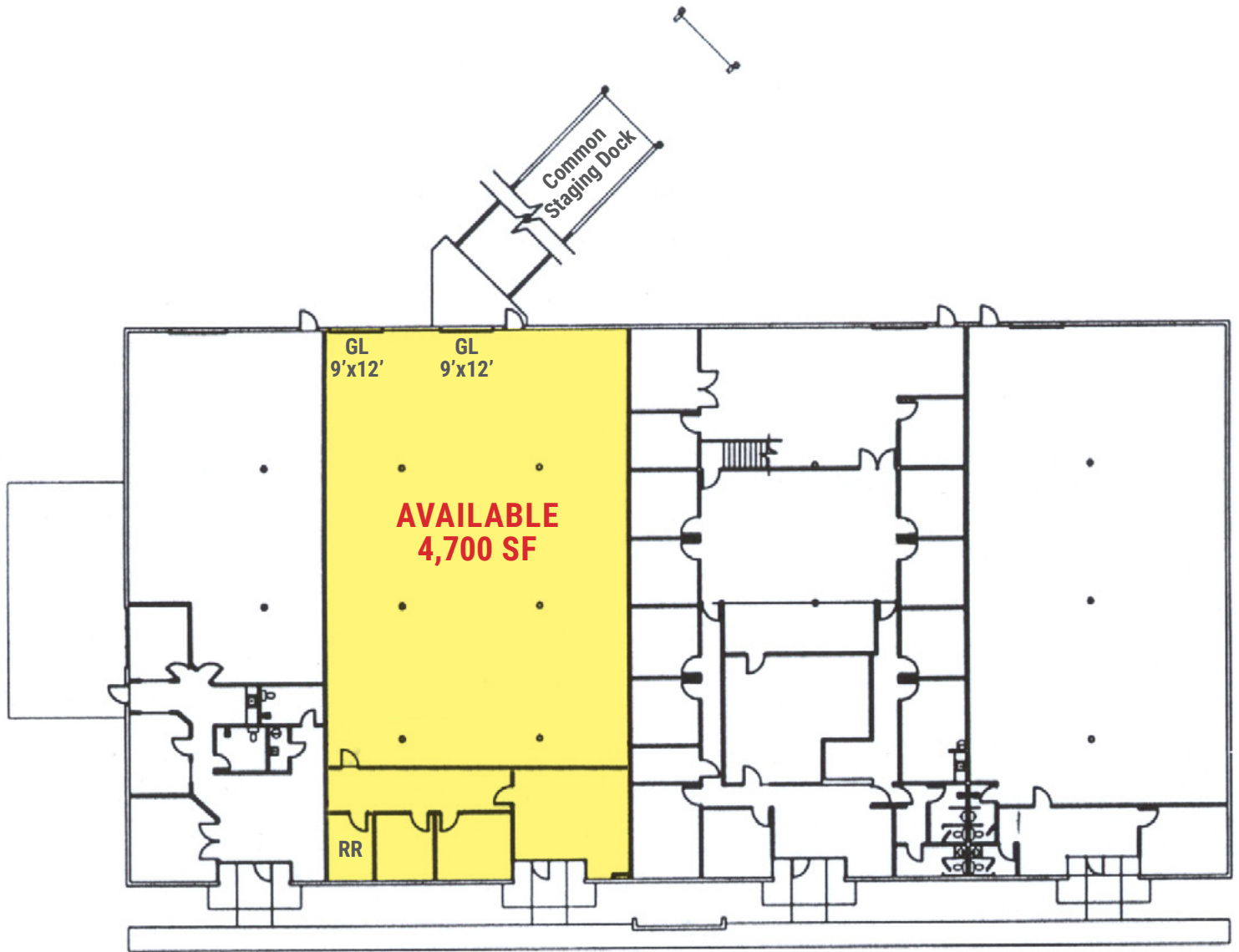
376 East 400 South, Suite 120 | Salt Lake City, Utah 84111  
801.578.5555 | [www.ngacres.com](http://www.ngacres.com)

This document has been prepared by Newmark Knight Frank for advertising and general information purposes only. While the information contained herein has been obtained from what are believed to be reliable sources, the same has not been verified for accuracy or completeness. Newmark Knight Frank accepts no responsibility or liability for the information contained in this document. Any interested party should conduct an independent investigation to verify the information contained herein.

# OFFICE/WAREHOUSE

2558 WEST CUSTER ROAD, SALT LAKE CITY, UTAH 84104

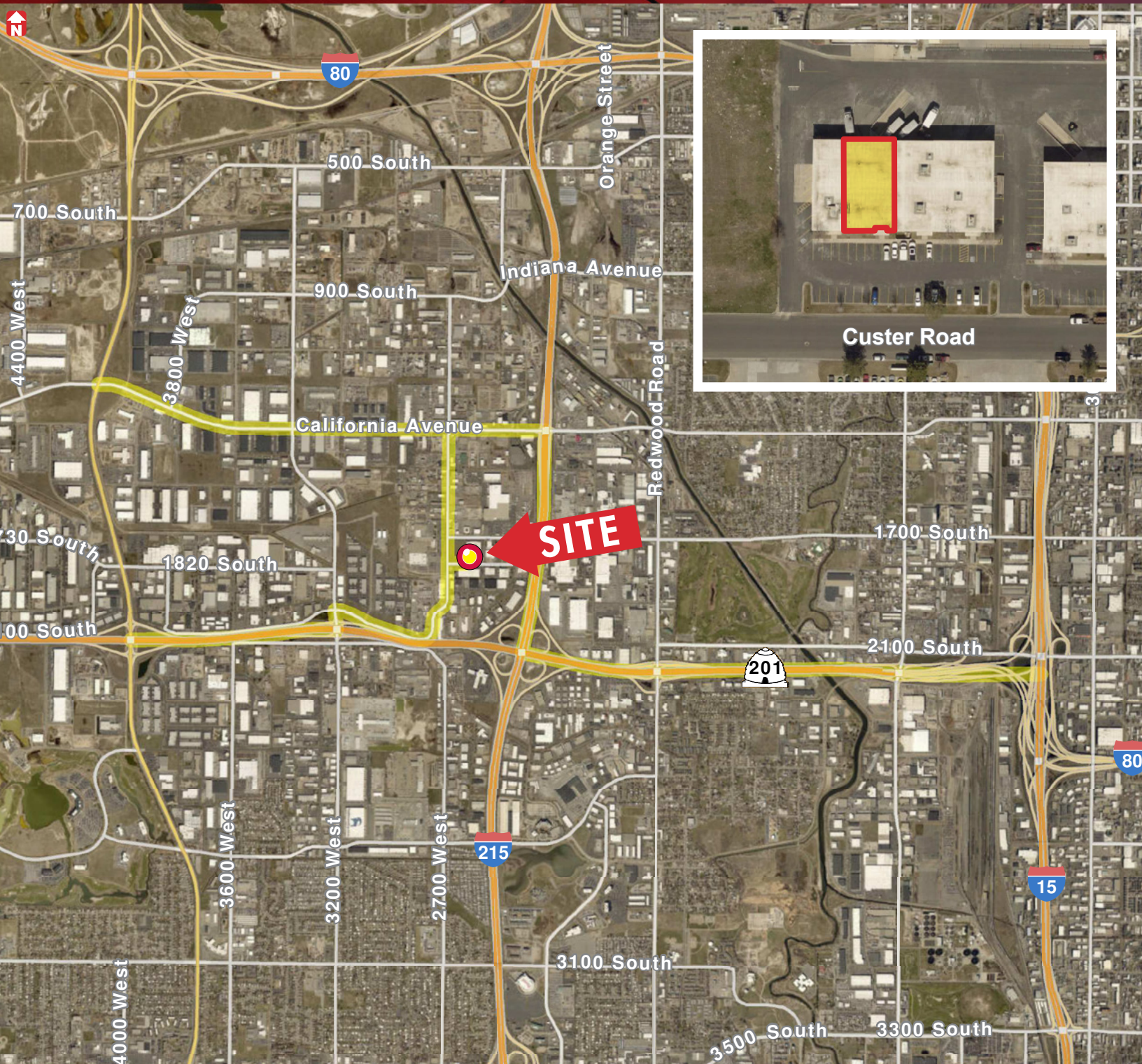
AVAILABLE  
FOR LEASE



# OFFICE/WAREHOUSE

2558 WEST CUSTER ROAD, SALT LAKE CITY, UTAH 84104

AVAILABLE  
FOR LEASE



376 East 400 South, Suite 120 | Salt Lake City, Utah 84111  
801.578.5555 | [www.ngacres.com](http://www.ngacres.com)



This document has been prepared by Newmark Knight Frank for advertising and general information purposes only. While the information contained herein has been obtained from what are believed to be reliable sources, the same has not been verified for accuracy or completeness. Newmark Knight Frank accepts no responsibility or liability for the information contained in this document. Any interested party should conduct an independent investigation to verify the information contained herein.