



WESTSIDE PLAZA

26th + Marion

Retail Endcap Available



5215-5219 West 26th Street,
Sioux Falls, SD 57106



size

Suite 5215: 2,920 sqft
Suite 5219: 1,500 sqft
Suites are currently
combined for a total of
4,420 sqft



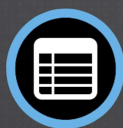
price

\$14.00 per foot NNN
(2020)



location

Site is located at the
intersection of West 26th Street
and Marion Road next to HyVee,
adjacent to Lake Lorraine
Lifestyle Center.



sublease

Sublease expiring
December 31, 2024.
Contact Broker for
Lease information.



traffic

26th Street:
21,100 cars per day

Marion Road:
13,300 cars per day



co-tenancy

Verizon, Great Clips, Papa
John's Pizza, HyVee,
Capriotti's Sandwich Shop,
Lowe's, Lake Lorraine, Sioux
Falls Ford, Dairy Queen,
Silverstar Car Wash.

Information deemed reliable but not guaranteed.



Lake Lorraine | 2571 S. Westlake Drive #100
Sioux Falls, South Dakota 57106
VBClink.com | 605.361.8211

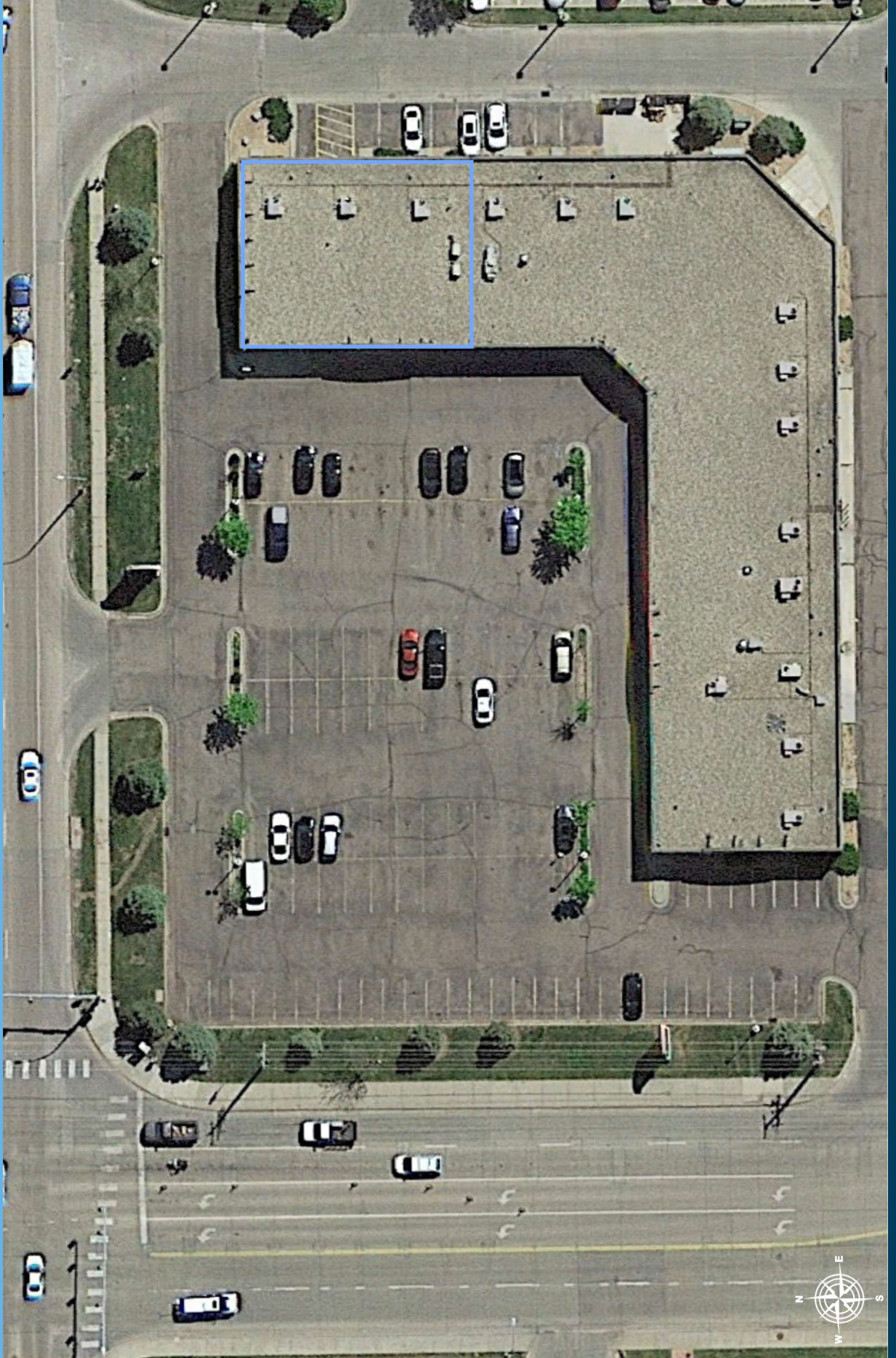


605.376.0127
Ryan@VBClink.com

AERA RETAIL MAP



SITE AERIAL



BUILDING PLAN

