

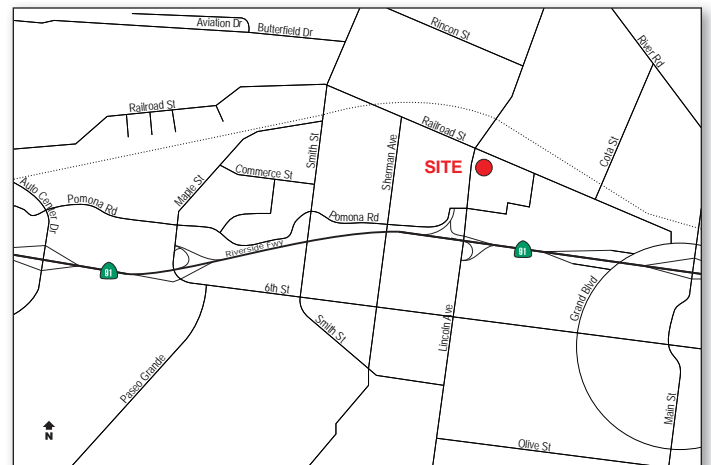
FOR SALE OR LEASE ±12,900 SF

255 N. Lincoln Avenue, Corona, California



Features:

- HUB Zoning
- High Image Office Building on 1.15 Acre Site
- ±10,680 Sq. Ft. - 2 Story Office
- ±2,220 Sq. Ft. Warehouse
- 22' Warehouse Clearance
- 4:1 Parking Ratio
- 800 Amps, 277/480 Volt, (verify)
- 1 Ground Level Door
- Large Yard
- Immediate Access to Riverside (91) Freeway



Ryan Moore
Senior Associate
Lic #01821438
714.935.2303
rmoore@voitco.com

Mitch Zehner
Executive Vice President
Lic #00882464
714.935.2307
mzehner@voitco.com

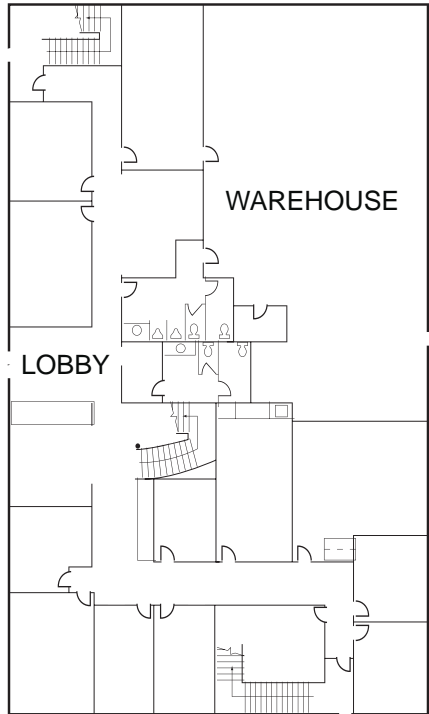
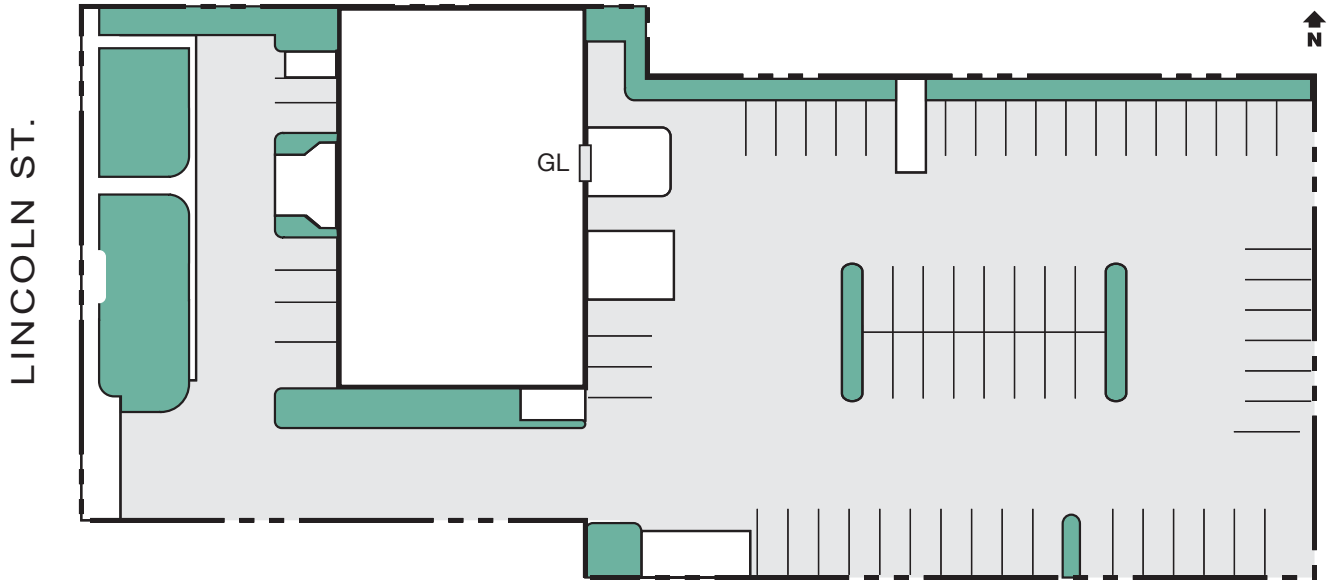
Seth Davenport
Senior Vice President
Lic #01413387
714.935.2376
sdavenport@voitco.com

Voit
REAL ESTATE SERVICES

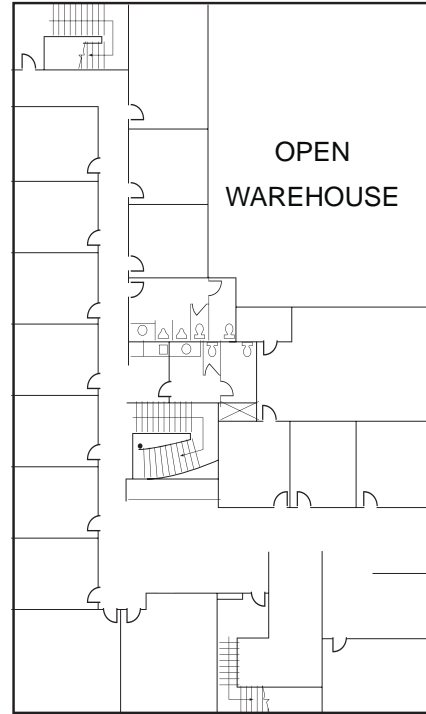
THE
ZEHNER
GROUP

FOR SALE OR LEASE ±12,900 SF

255 N. Lincoln Avenue, Corona, California



1ST FLOOR



2ND FLOOR

Ryan Moore
Senior Associate
Lic #01821438
714.935.2303
rmoore@voitco.com

Mitch Zehner
Executive Vice President
Lic #00882464
714.935.2307
mzehner@voitco.com

Seth Davenport
Senior Vice President
Lic #01413387
714.935.2376
sdavenport@voitco.com

Voit
REAL ESTATE SERVICES

THE
ZEHNER
GROUP

3500 W. Orangewood Ave., Orange, CA 92868 • 714.978.7880 • 714.978.8329 Fax • Lic #01333376 | www.voitco.com | www.zehnergroup.net

The information contained herein has been obtained from sources we deem reliable. While we have no reason to doubt its accuracy, we do not guarantee it.
©2011 Voit Real Estate Services, Inc. All Rights Reserved. Real People. Real Solutions.™ is a trademark of Voit Real Estate Services.