

# Publix #1373 - City Plaza at Tampa Palms

16041 Tampa Palms Blvd W  
Tampa, FL 33647  
Lat 28.099, Long -82.400

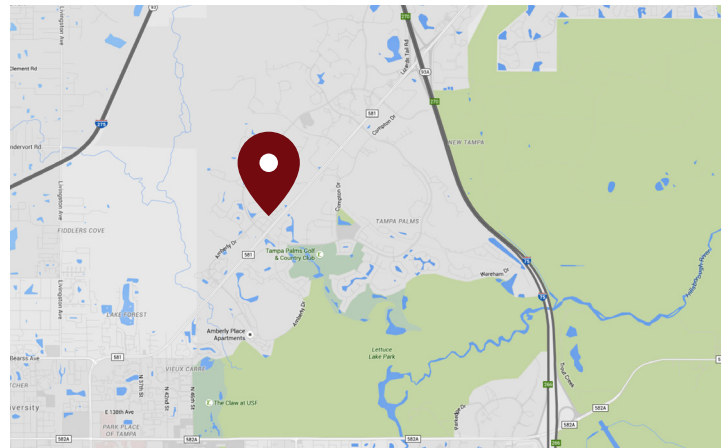
FOR LEASE



979 - 12,362 SF AVAILABLE

## PROPERTY HIGHLIGHTS

- Tampa MSA – New Tampa
- Tampa Palms Neighborhood
- Publix-Anchored
- Junior Anchors Include Bealls Outlet and Tampa General
- Strong National and Local Tenant Mix
- 2nd Generation Restaurant Space with Outdoor Seating Available
- Traffic Count: 116,500 VPD



DEMOGRAPHICS	1 Mile	3 Miles	5 Miles
Total Population	5,088	61,501	180,535
Daytime Population	5,849	72,267	195,284
Total Households	2,590	25,116	71,699
Avg. HH Income	\$110,837	\$74,769	\$75,217

Data provided by Placer Labs Inc. (www.placer.ai) & Esri

## Sandra Woodworth

813.210.7509 | [swoodworth@crossmanco.com](mailto:swoodworth@crossmanco.com)  
9950 Princess Palm Avenue, Suite 340, Tampa, FL

Licensed Real Estate Broker. No warranty expressed or implied has been made to the accuracy of the information provided herein, no liability assumed for error or omission.



www.crossmanco.com

# Publix #1373 - City Plaza at Tampa Palms

16041 Tampa Palms Blvd W

Tampa, FL 33647

Lat 28.099, Long -82.400



- AVAILABLE
- LEASED
- NOT OWNED

Suite	Tenant	Size	Suite	Tenant	Size	Suite	Tenant	Size
41	Publix	54,340	31	Uptown Cheapskate	4,800	57	The UPS Store	1,015
3-11	Tampa General Hospital	6,500	33	Pet Depot	7,200	59	Subway	1,685
13-15	AVAILABLE	12,362	35	Frame by Frame	2,000	61A	Bealls Outlet	27,470
17	Great Clips	1,289	37	Publix Liquors	1,574	65	AVAILABLE	979
19	Cappy's Pizza	2,078	37B	PT Solutions Physical Therapy	4,257	67	Seva Beauty	700
21	Smile Design Dentistry	1,830	49	China City	983	69	Florida Central Credit Union	3,000
23	AVAILABLE	4,285	51	Travel Agency	800	OP	SunTrust Bank	
27	McNatt's Cleaners	705	53	Charles Jewelers	1,395	<b>TOTAL 144,872</b>		
29	Fat Rabbit Pub	2,835	55	Nail Salon	790			

## Sandra Woodworth

813.210.7509 | [swoodworth@crossmanco.com](mailto:swoodworth@crossmanco.com)

9950 Princess Palm Avenue, Suite 340, Tampa, FL

Licensed Real Estate Broker. No warranty expressed or implied has been made to the accuracy of the information provided herein, no liability assumed for error or omission.



Crossman & Company

[www.crossmanco.com](http://www.crossmanco.com)



# Publix #1373 - City Plaza at Tampa Palms

16041 Tampa Palms Blvd W

Tampa, FL 33647

Lat 28.099, Long -82.400

## FOOT TRAFFIC OVERVIEW

EST. # OF CUSTOMERS ANNUALLY



EST. # OF VISITS ANNUALLY



AVG. VISITS / CUSTOMER



AVG. LENGTH-OF-STAY / VISIT



TOP 3 DAYS



Saturday	215,759
Friday	206,304
Sunday	197,045

# OF VISITS

TOP 3 HOURS

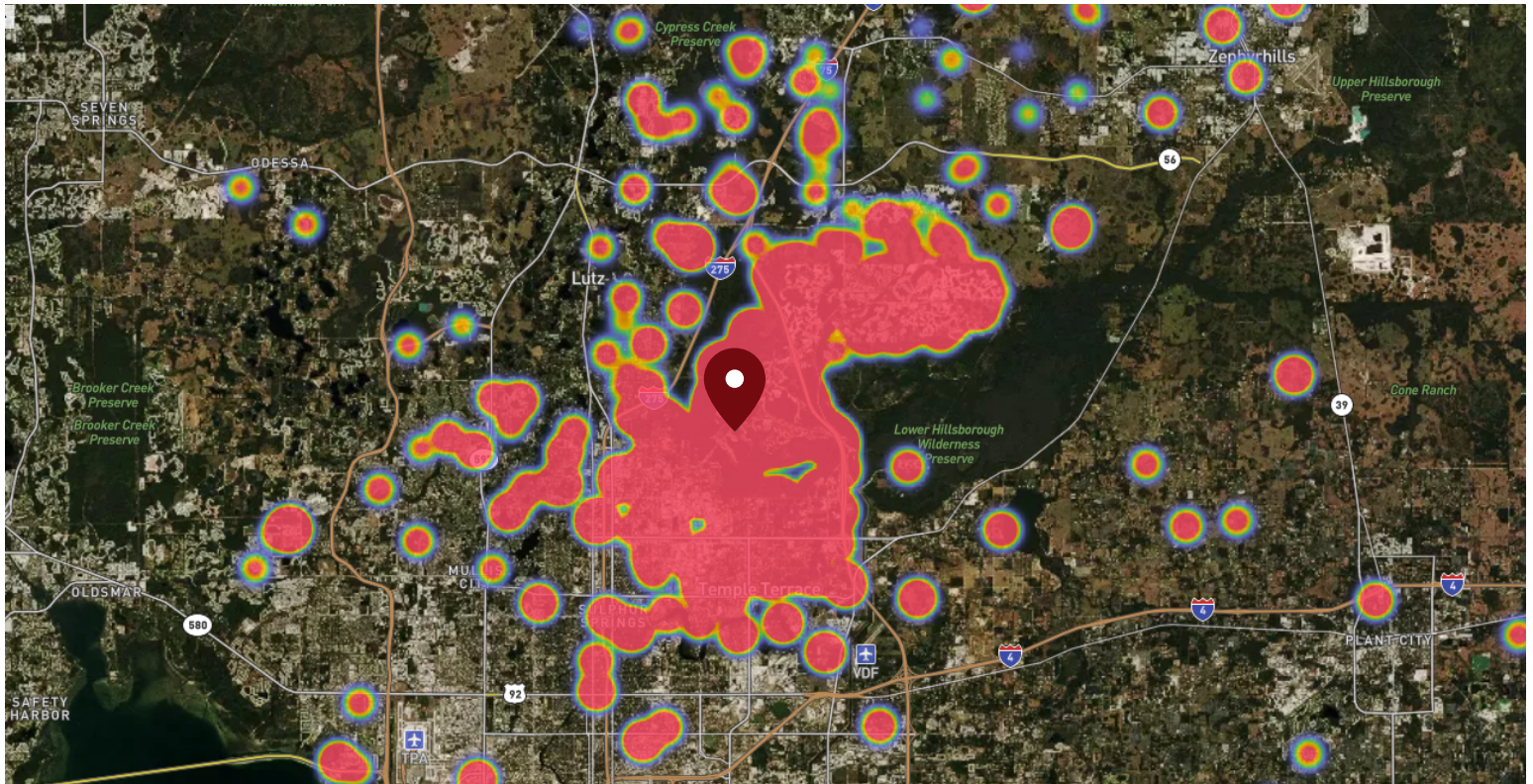


5-6 PM	240,855
6-7 PM	236,305
4-5 PM	232,058

# OF VISITS

Data provided by Placer Labs Inc. (www.placer.ai) Oct 1, 2019 - Sept 30, 2020

## SITE VISIT DENSITY



Red, orange, and yellow colors represent the location of 60% of site visitors

Data provided by Placer Labs Inc. (www.placer.ai)

**Sandra Woodworth**

813.210.7509 | [swoodworth@crossmanco.com](mailto:swoodworth@crossmanco.com)

9950 Princess Palm Avenue, Suite 340, Tampa, FL

Licensed Real Estate Broker. No warranty expressed or implied has been made to the accuracy of the information provided herein, no liability assumed for error or omission.



[www.crossmanco.com](http://www.crossmanco.com)