

FOR LEASE

123 TICE BOULEVARD

WOODCLIFF LAKE, NJ

CLASS "A" BUILDING



AVAILABLE SPACE

- Partial 3rd floor: 4,500 RSF
- Partial 1st floor: 3,793 RSF Pre-Built
- Term: 5-10 years
- Availability: Immediate
- Asking Rate: \$26.00 per RSF + TE
- Furniture: Available

BUILDING FEATURES

- Monument signage available
- Recently renovated lobby and restrooms
- Walking distance to Tice's Corner shopping center and Hilton Hotel
- On-site full service café



CONTACT US

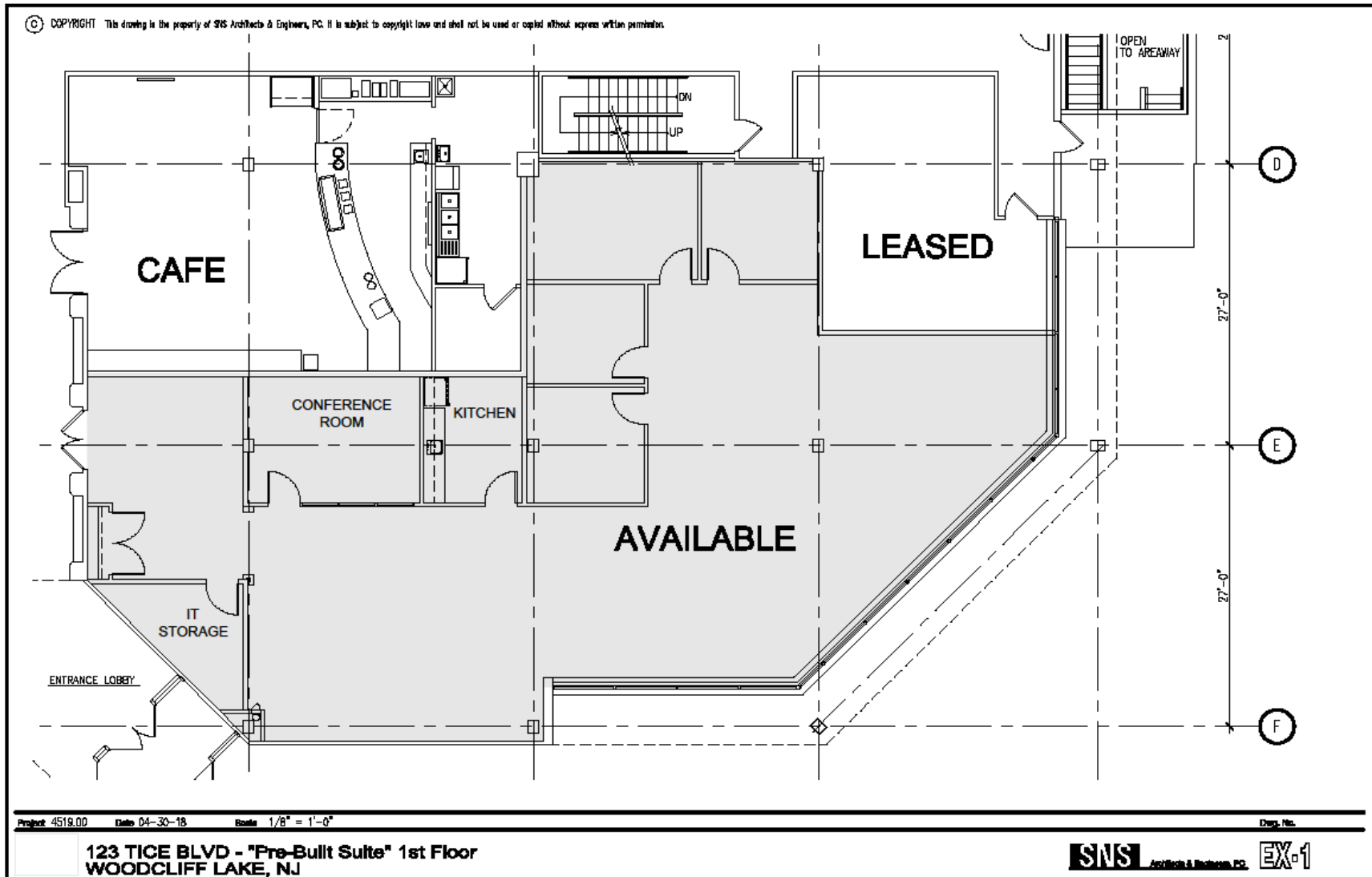
GARRETT M. RIOUX

+1 201 712 5688
garrett.rioux@cbre.com

123 TICE BOULEVARD

WOODCLIFF LAKE, NJ

1st FLOOR
3,793 RSF
Pre-Built Unit



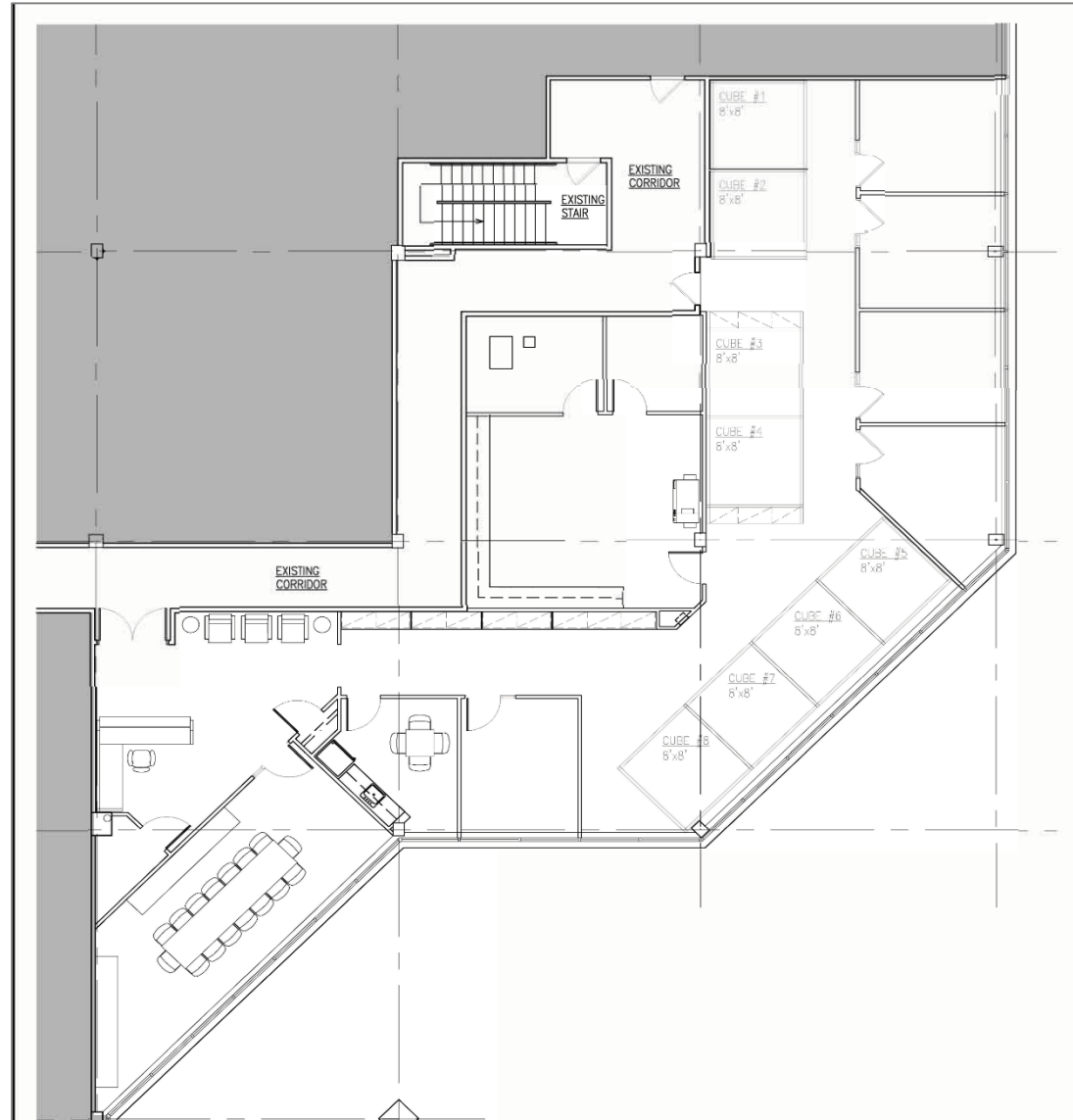
123 TICE BOULEVARD

WOODCLIFF LAKE, NJ

3rd FLOOR

4,500 RSF

Existing Conditions

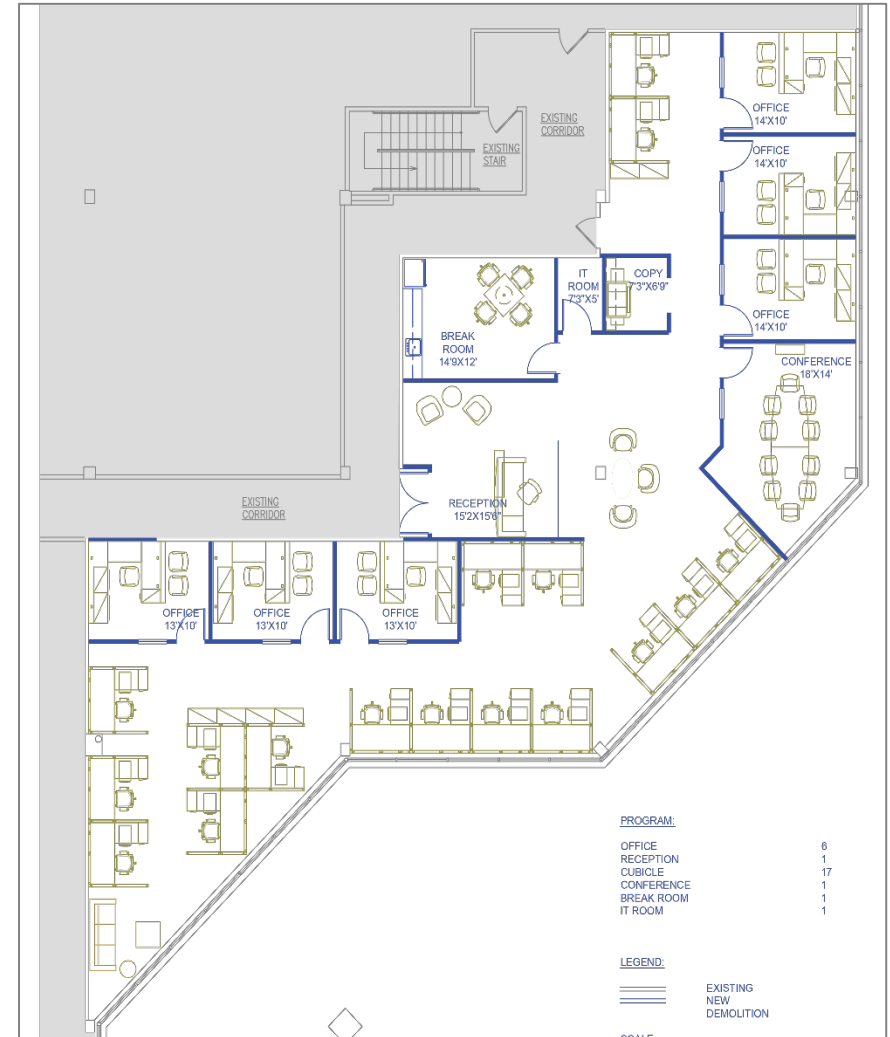
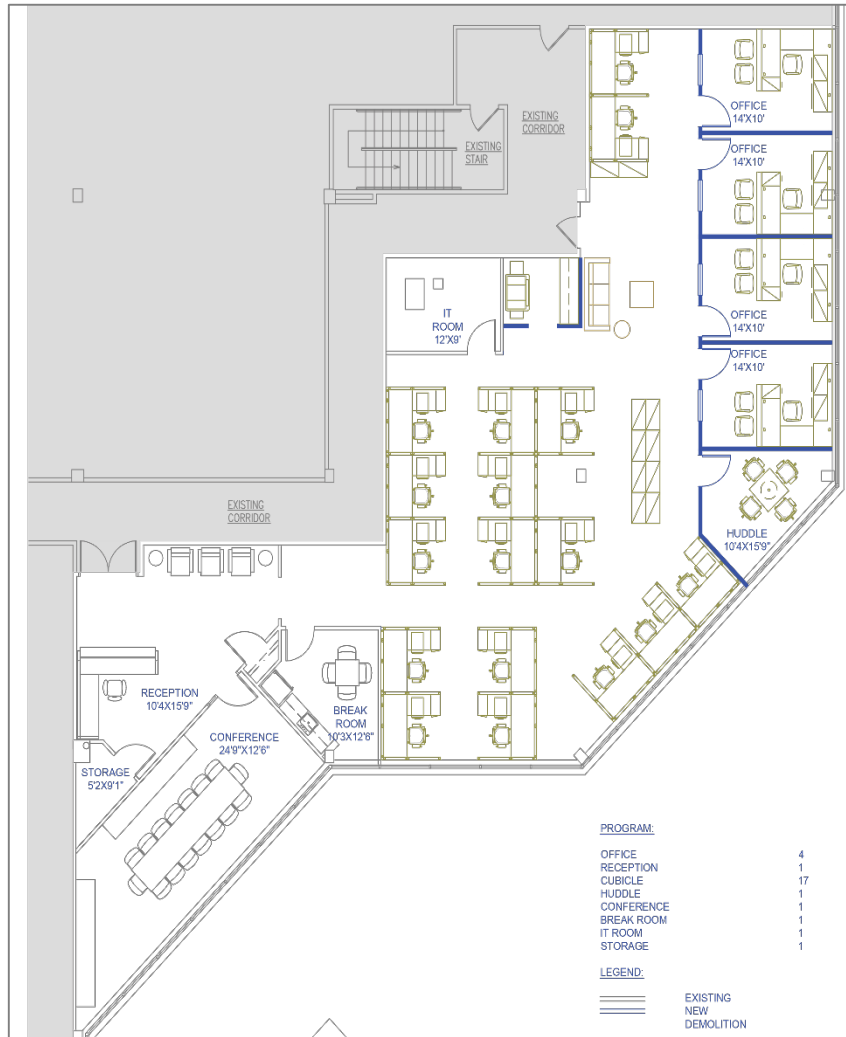


123 TICE BOULEVARD

WOODCLIFF LAKE, NJ

3rd FLOOR
4,500 RSF

Test Fit
Options



© 2019 CBRE, Inc. All rights reserved. This information has been obtained from sources believed reliable, but has not been verified for accuracy or completeness. You should conduct a careful, independent investigation of the property and verify all information. Any reliance on this information is solely at your own risk. CBRE and the CBRE logo are service marks of CBRE, Inc. All other marks displayed on this document are the property of their respective owners, and the use of such logos does not imply any affiliation with or endorsement of CBRE