



TRIBECA

NEW YORK
NY

110 HUDSON STREET

SPACE DETAILS

LOCATION

Northeast corner of Franklin Street

APPROXIMATE SIZE

Ground Floor	3,138 SF
Lower Level	2,543 SF
Total	5,681 SF

POSSESSION

Immediate

TERM

Negotiable

FRONTAGE

44 FT on Hudson Street

54 FT on Franklin Street

CEILING HEIGHT

Ground Floor 15 FT 5 IN

Lower Level 12 FT 4 IN

SITE STATUS

Formerly Santander Bank

NEIGHBORS

Thom Browne Mens, Thom Browne Womens, Patron of the New, Issey Miyake, Shinola, Kataoka, Jack Erwin, Mr Chow, Jennie Kayne, Alton Lane and Bubby's

COMMENTS

Dramatic flagship corner with tremendous wraparound frontage and high ceilings

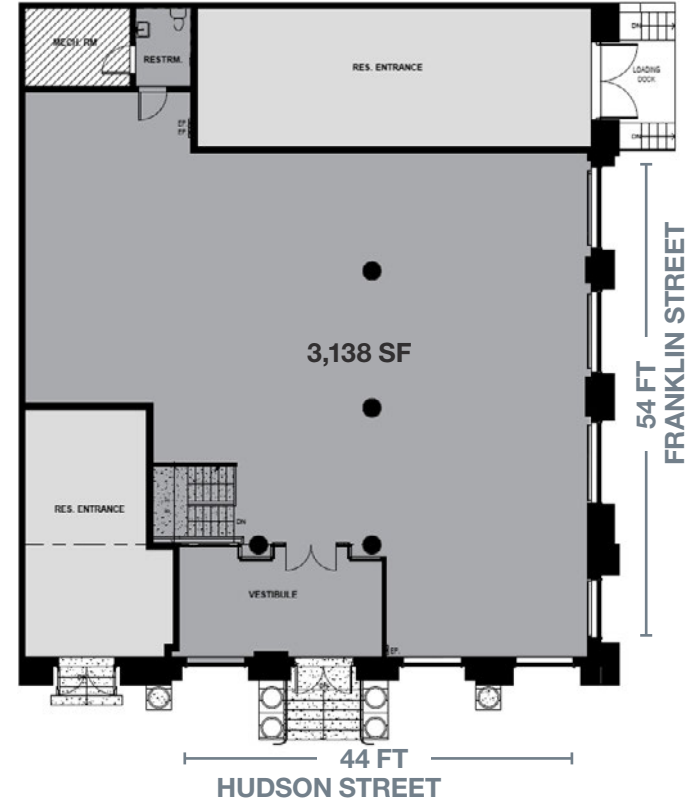
Located on two of Tribeca's most prestigious streets

Efficient floorplate

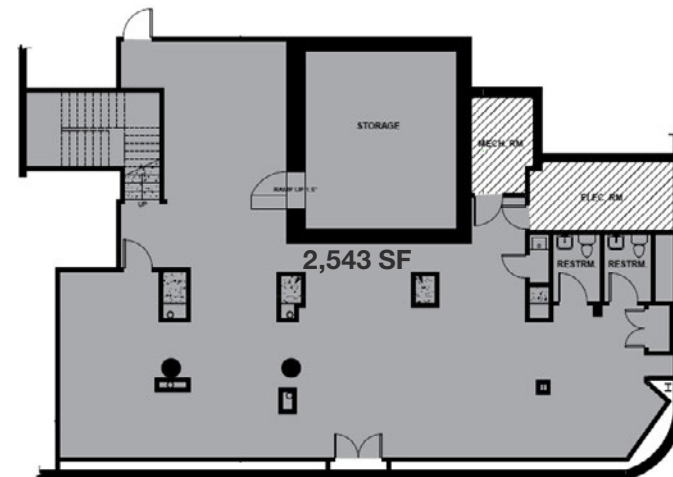
Strong retail adjacencies including fashion, galleries, restaurants and home furnishing tenants

Located in the epicenter of Tribeca, Manhattan's highest income zipcode

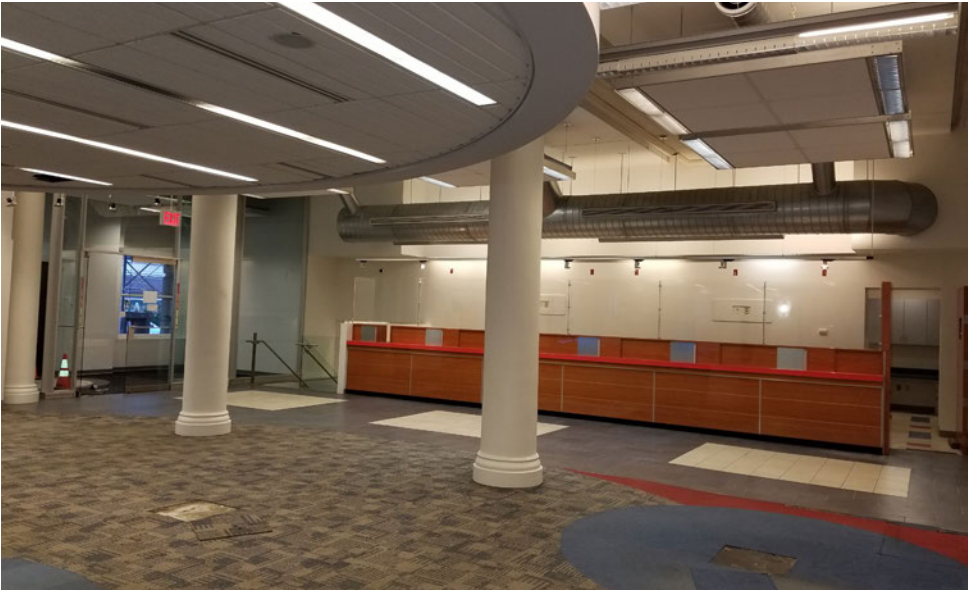
GROUND FLOOR



LOWER LEVEL



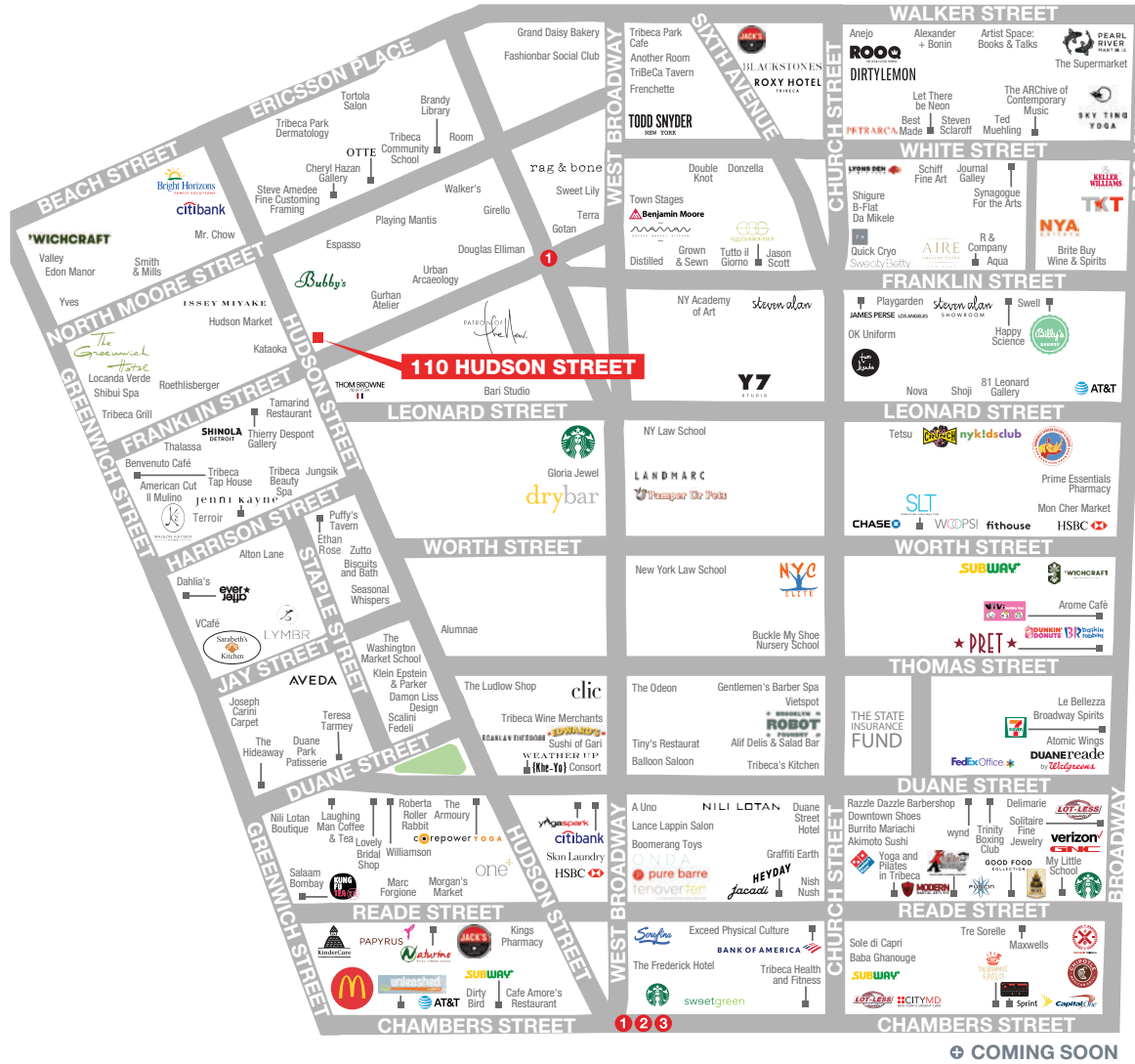
INTERIOR PHOTOS



AREA NEIGHBORS



AREA RETAIL



CONTACT EXCLUSIVE AGENTS

BENJAMIN BIRNBAUM
212.850.5474
bbirnbaum@ngkf.com

ANDREW STERN
212.351.9353
andrew.stern@ngkf.com



NGKF.COM

© 2019 NEWMARK KNIGHT FRANK RETAIL. The information contained herein has been obtained from sources deemed reliable but has not been verified and no guarantee, warranty or representation, either express or implied, is made with respect to such information. Terms of sale or lease and availability are subject to change or withdrawal without notice.