

# Willows Road Office Park I

12525 Willows Road NE  
Kirkland, WA 98034

Building Renovations Complete | Ready for Tenant Improvements



## Property Highlights

- + Approximately 9,062 SF available on the 2nd floor
- + Space is divisible to  $\pm 1,408$  SF
- + Ample free parking
- + Space is currently in warm shell condition, ready for TI's
- + Abundance of natural light with territorial views
- + Minutes from The Village at Totem Lake, which includes Whole Foods, Trader Joe's, MOD Pizza, Chipotle and 850 new residential units.
- + Easy access to I-405 & SR 520



Willows Road Office Park I

12525 Willows Road NE | Kirkland, WA 98034

# Building Renovations Complete

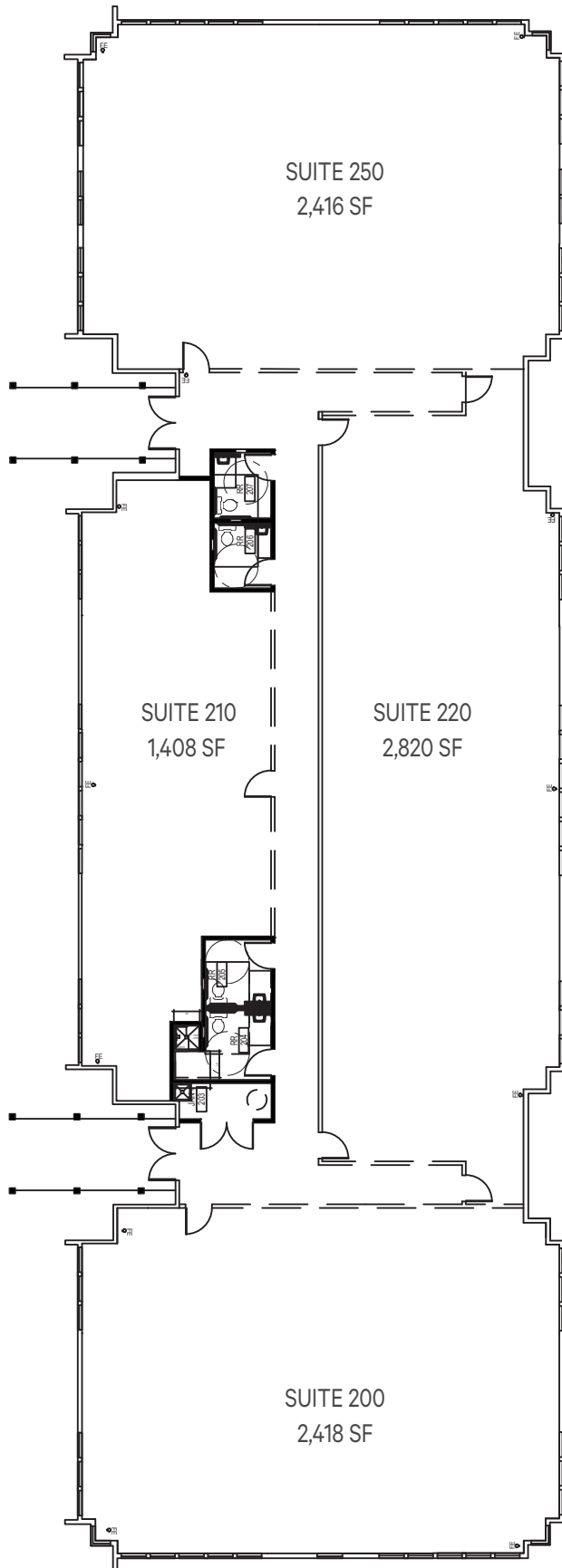
Ready for Tenant Improvements



2nd Floor | ± 9,062 SF Available  
Divisible to 1,408 SF

## Space Available

Suite	Sq. Ft.
200	2,418
210	1,408
220	2,820
250	2,416
<b>TOTAL</b>	<b>9,062</b>

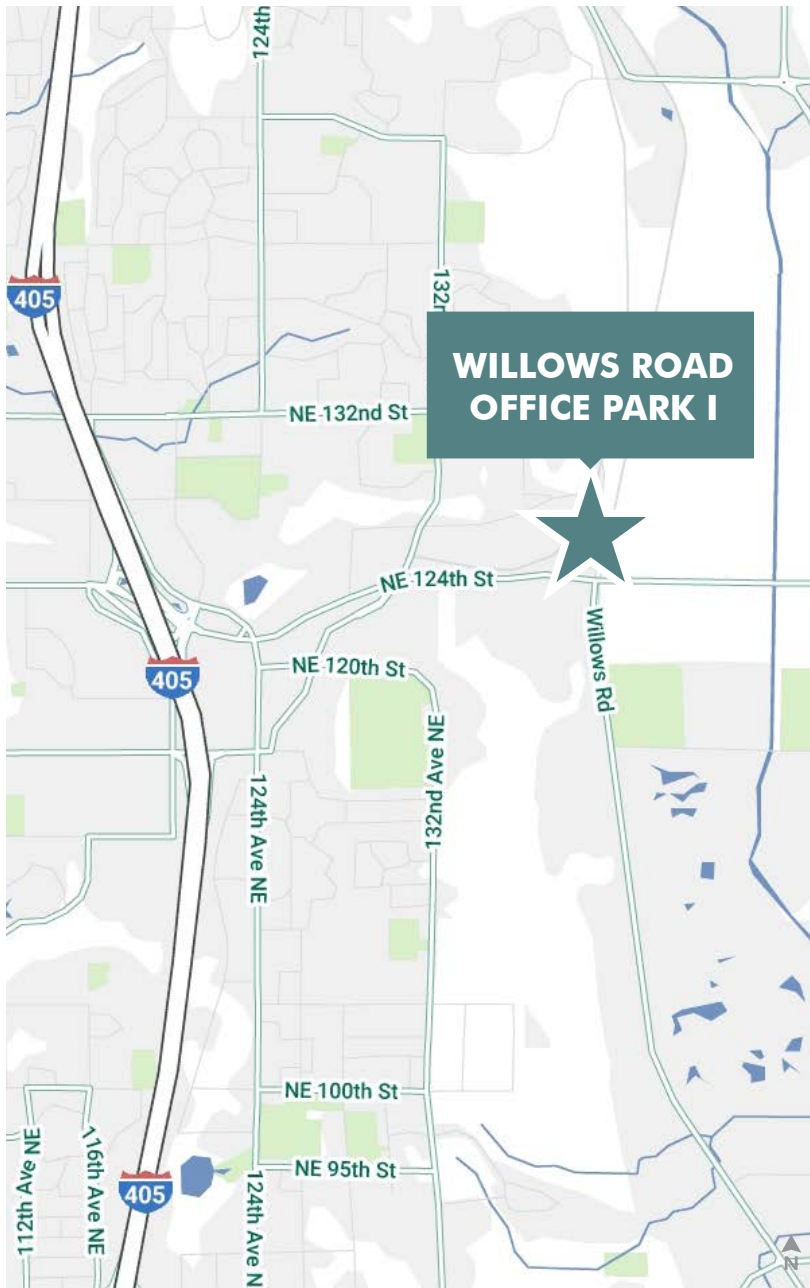




## Willows Road Office Park I

12525 Willows Road NE | Kirkland, WA 98034

For Lease



## Contact Us

### Brian Kenny

Vice President  
+1 425 462 6910  
brian.kenny@cbre.com

CBRE, Inc.  
929 108th Ave NE, Suite 700  
Bellevue, WA 98004

© 2021 CBRE, Inc. All rights reserved. This information has been obtained from sources believed reliable, but has not been verified for accuracy or completeness. You should conduct a careful, independent investigation of the property and verify all information. Any reliance on this information is solely at your own risk. CBRE and the CBRE logo are service marks of CBRE, Inc. All other marks displayed on this document are the property of their respective owners, and the use of such logos does not imply any affiliation with or endorsement of CBRE. Photos herein are the property of their respective owners. Use of these images without the express written consent of the owner is prohibited. ka12-10-21