

# TEN-O-FIVE

1005 East St. Elmo Rd. | Austin, Texas 78745



**KEVIN KIMBROUGH**

kevin.kimbrough@am.jll.com  
+1 512 225 1736

**COLTON MCCASLAND**

colton.mccasland@am.jll.com  
+1 512 225 1738



# FIVE Reasons to Be Here



## Location

Excellent ingress and egress to HWY 71 & IH 35.

## Start Fresh

In the up and coming St Elmo District.



## No Add-On Factor

Save big by only paying for what SF you use.



## Move-In Ready Space

We have spaces ranging from 1,500 SF to 12,000 SF that are move in ready.



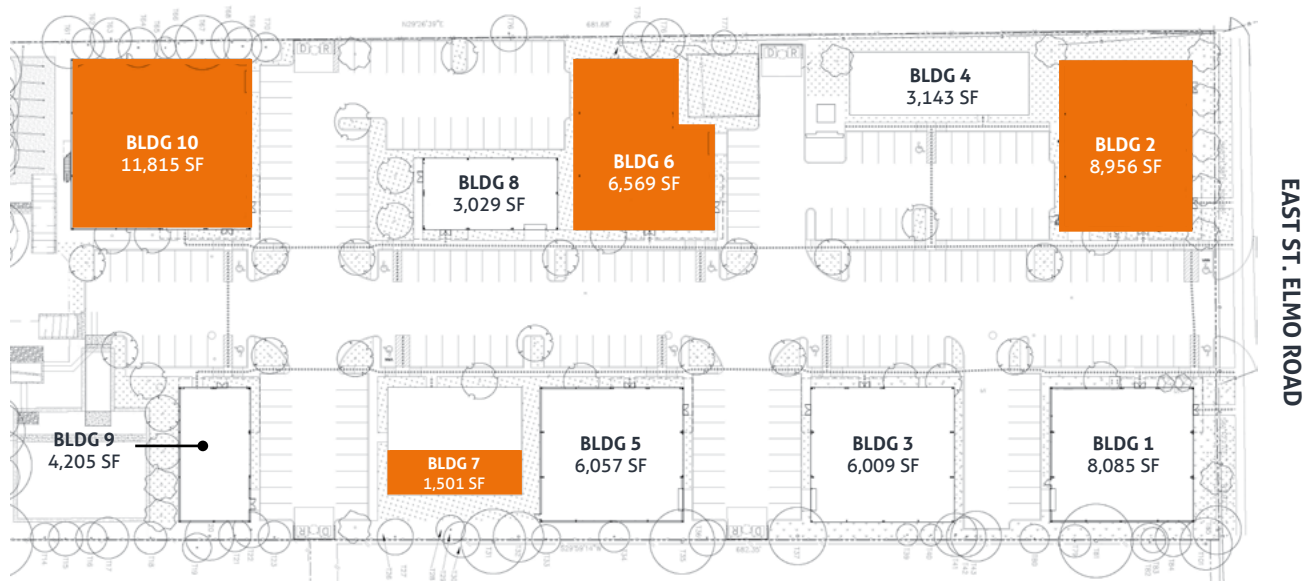
## Control Your Own Environment

Structured so you're able to manage your own janitorial services, security and electricity.



# TEN-O-FIVE

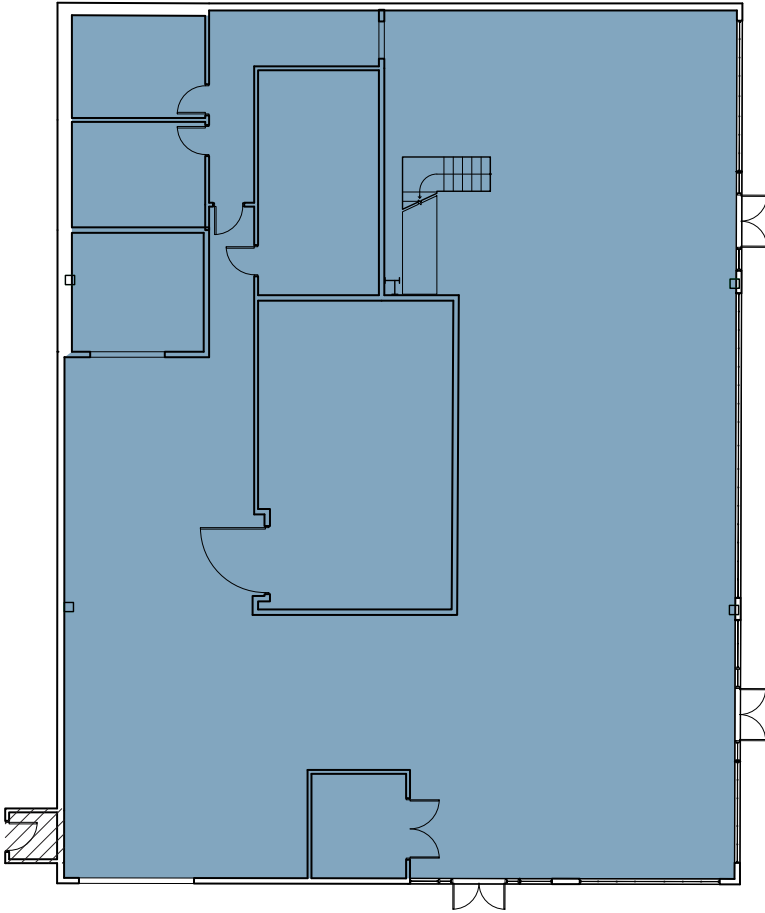
Current Availability



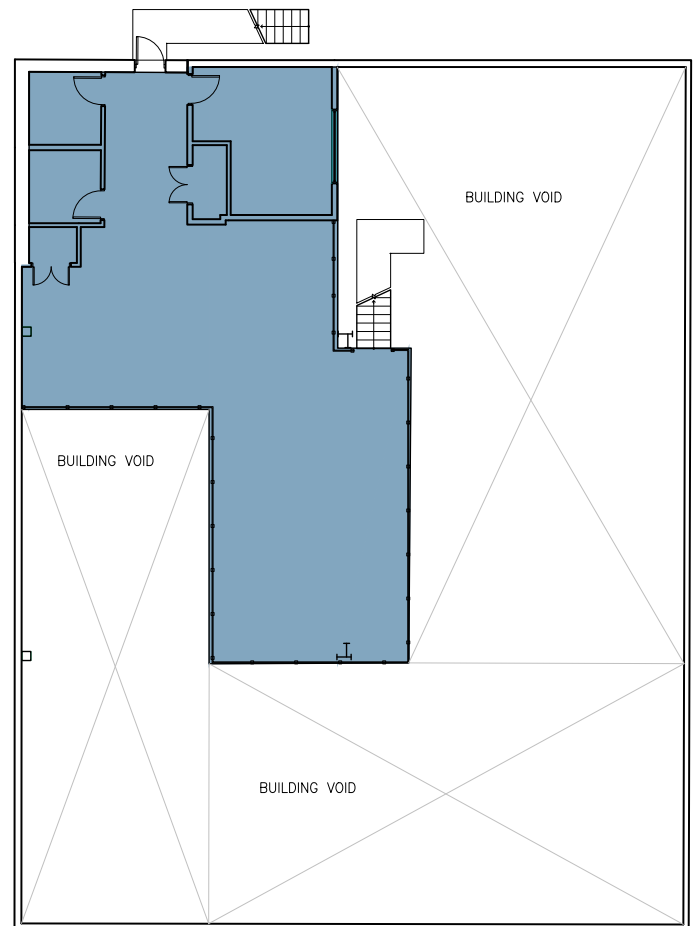
# BUILDING 2

8,956 RSF | Available Immediately

## 1st Floor / 6,976 RSF



## Mezzanine / 1,980 RSF

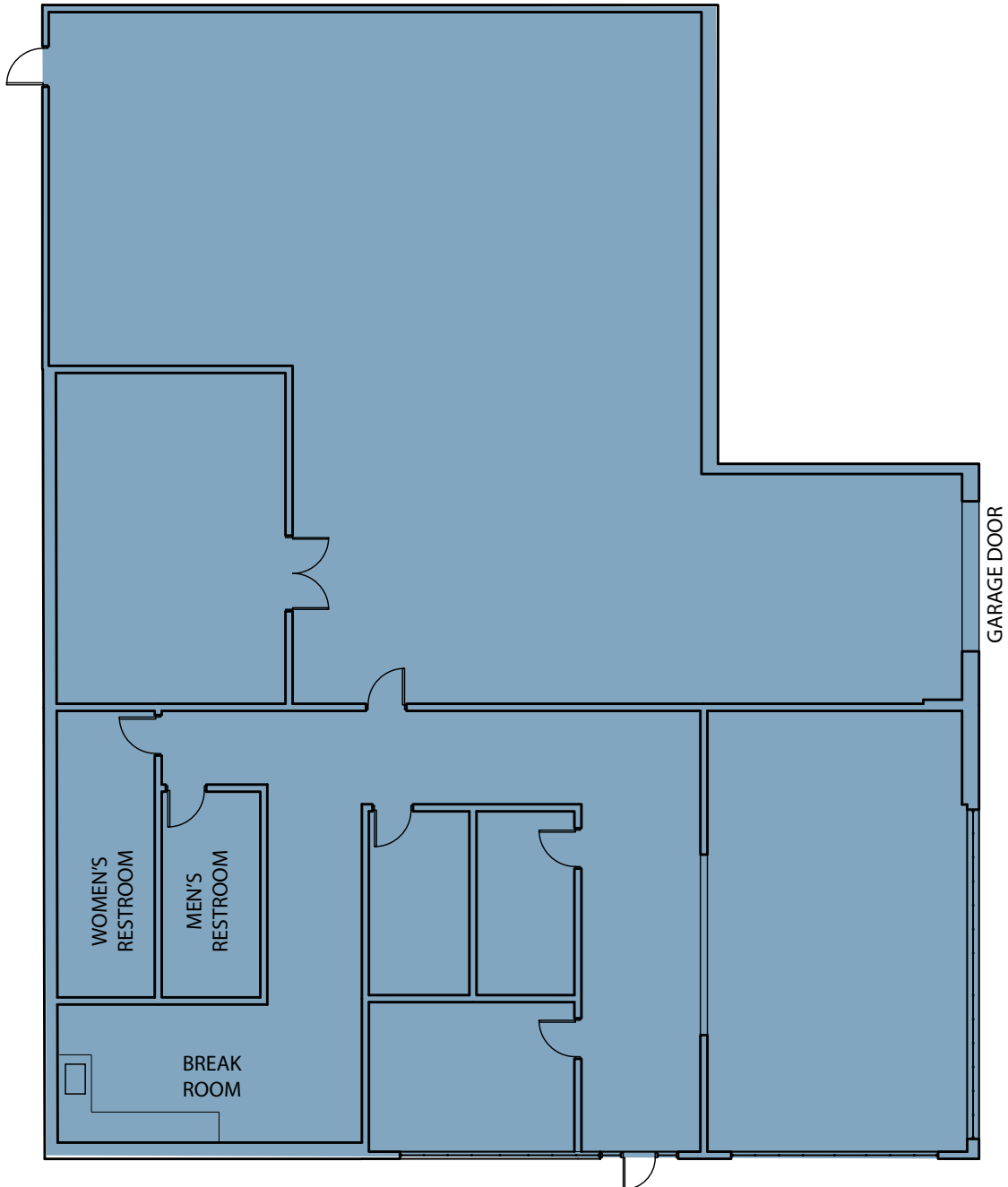


# BUILDING 6

6,569 RSF | Available Immediately



CLICK HERE FOR WALK THROUGH



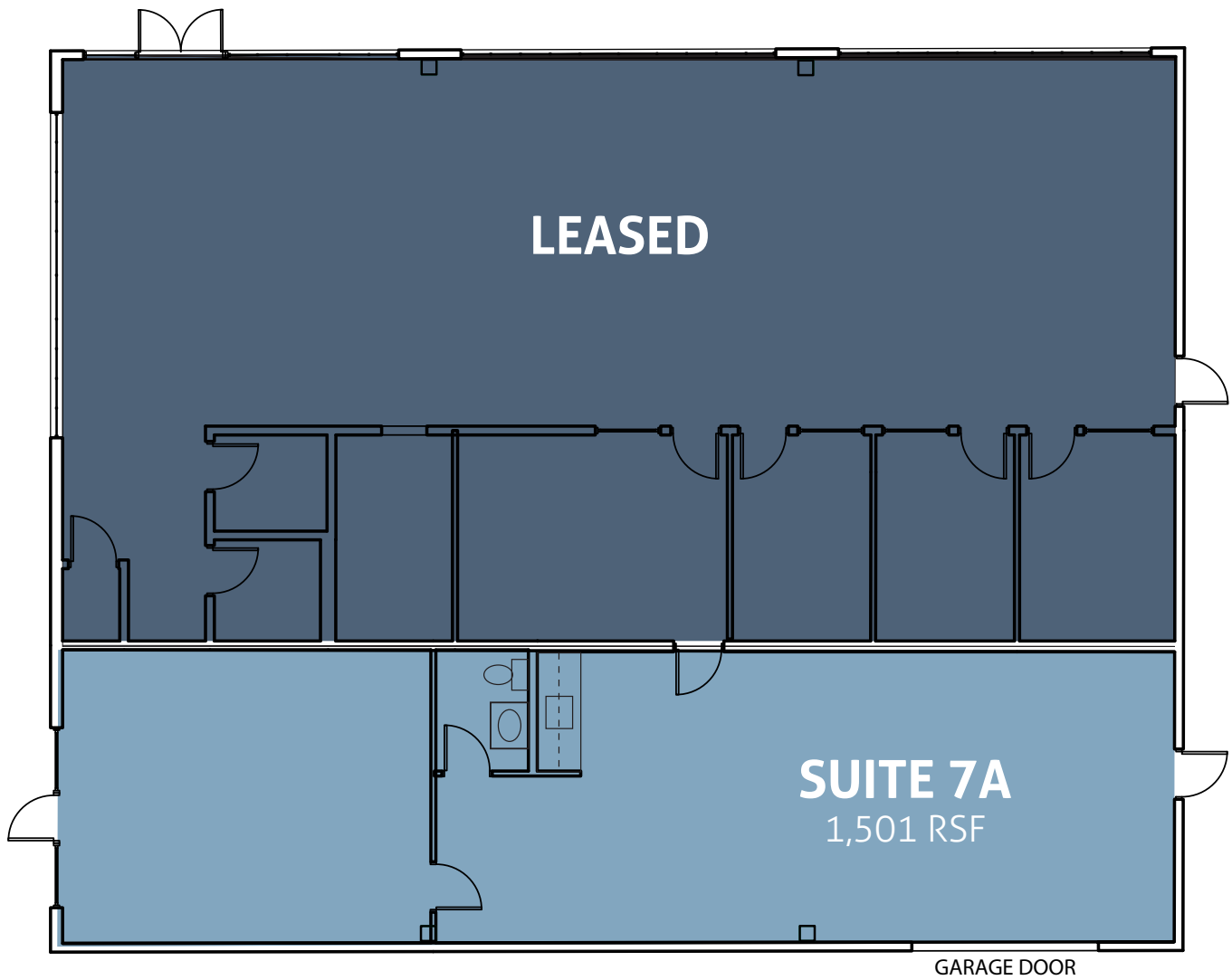
# BUILDING 6

6,569 RSF | Available Immediately



# BUILDING 7 — SUITE 7A

1,501 RSF | Available Immediately



# BUILDING 10

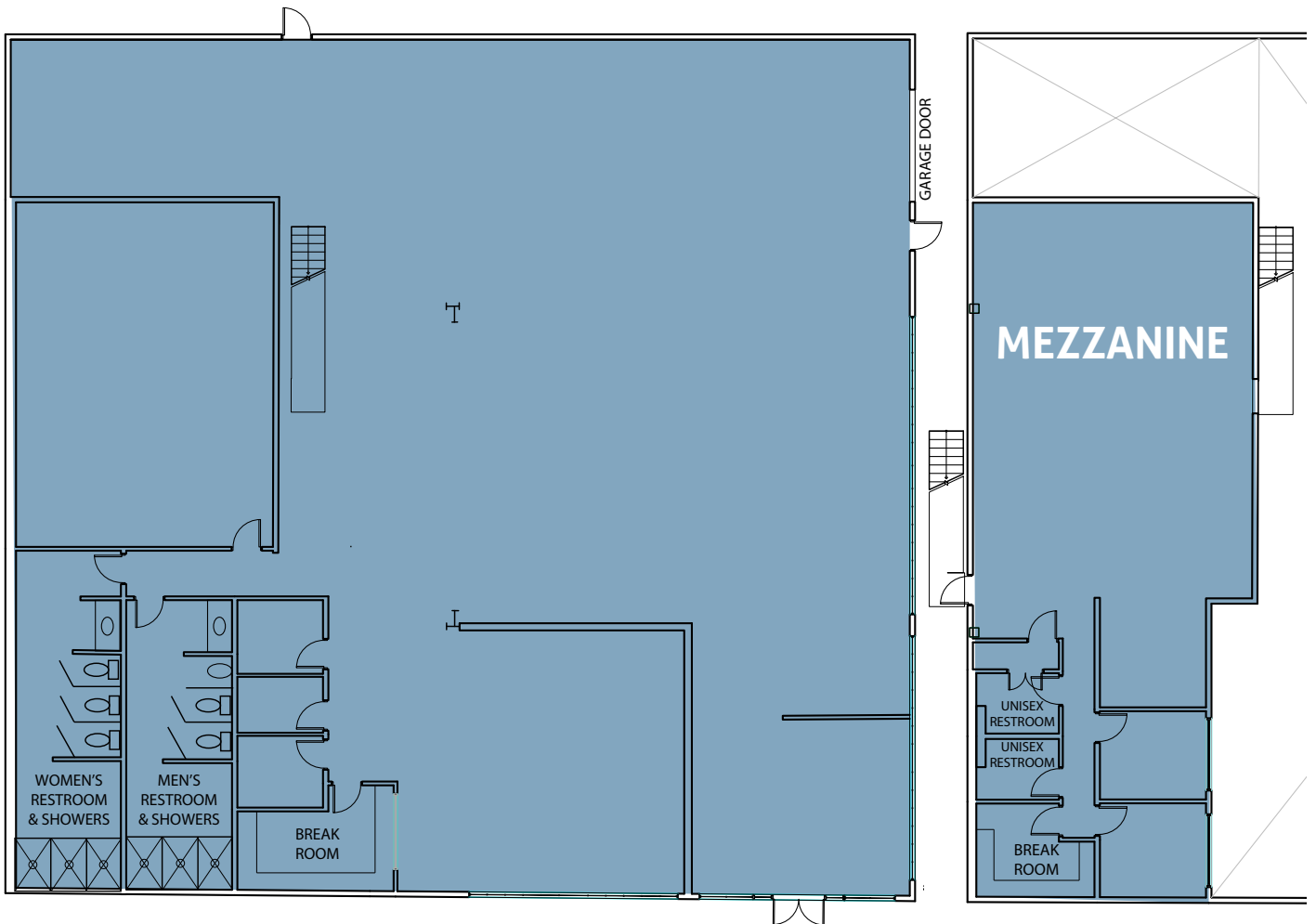
11,815 RSF | Available Immediately



[CLICK HERE FOR WALK THROUGH](#)

## 1st Floor / 9,552 RSF

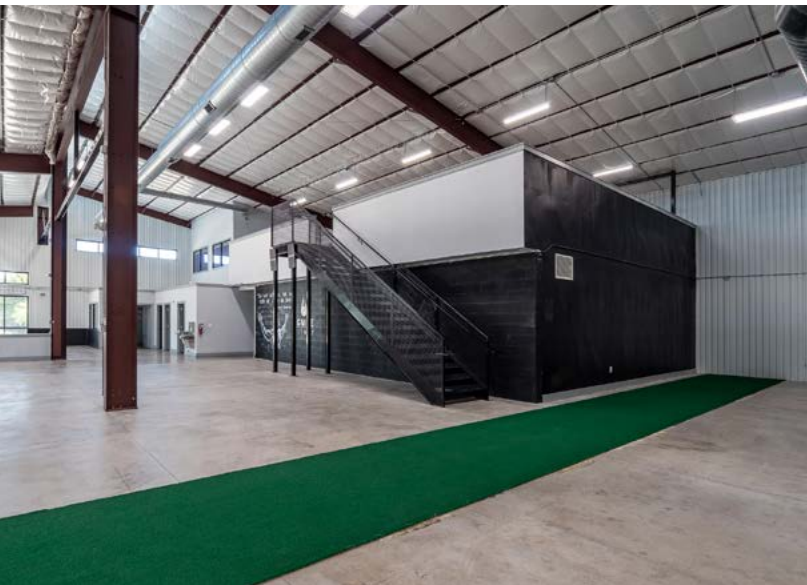
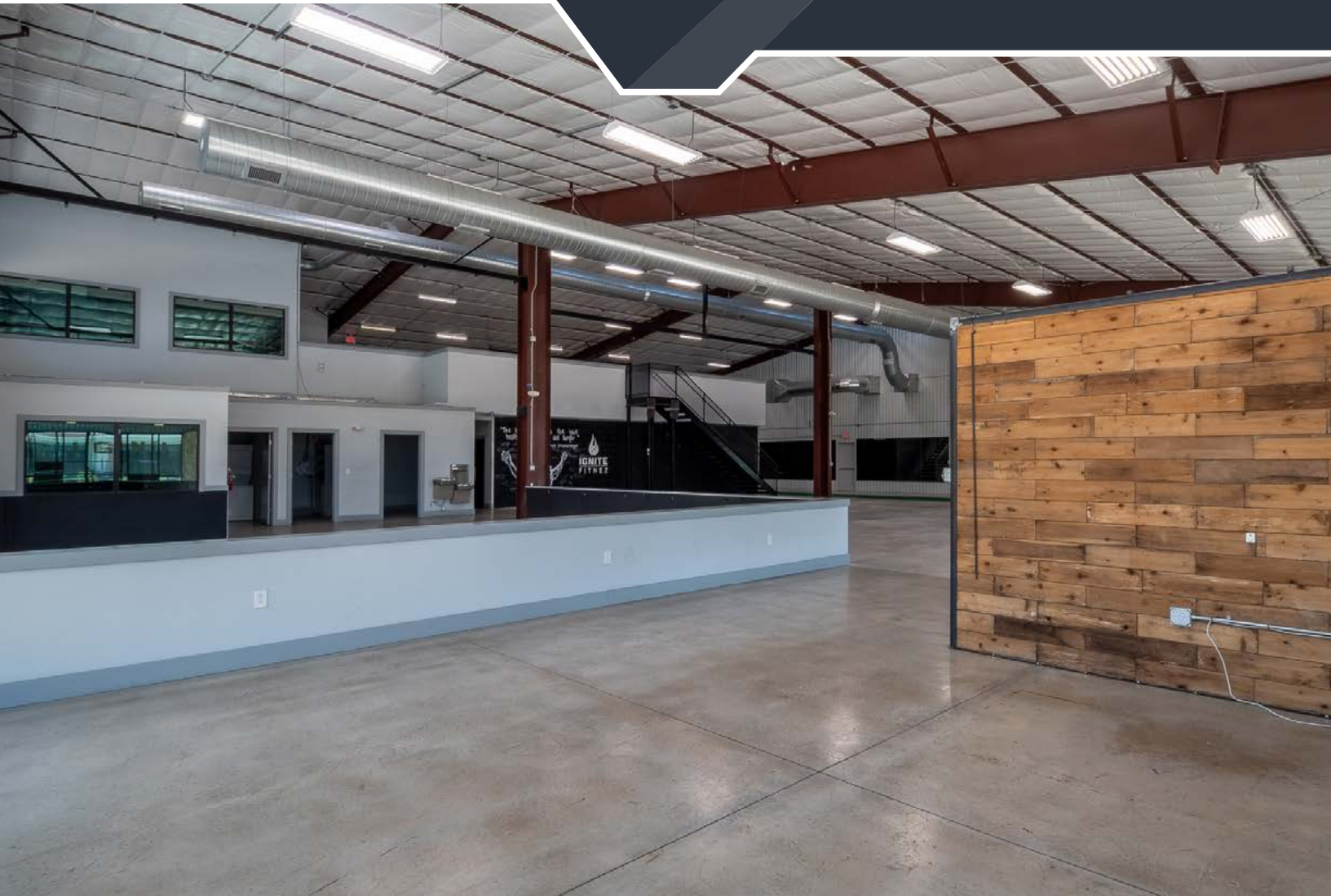
## Mezzanine / 2,263 RSF





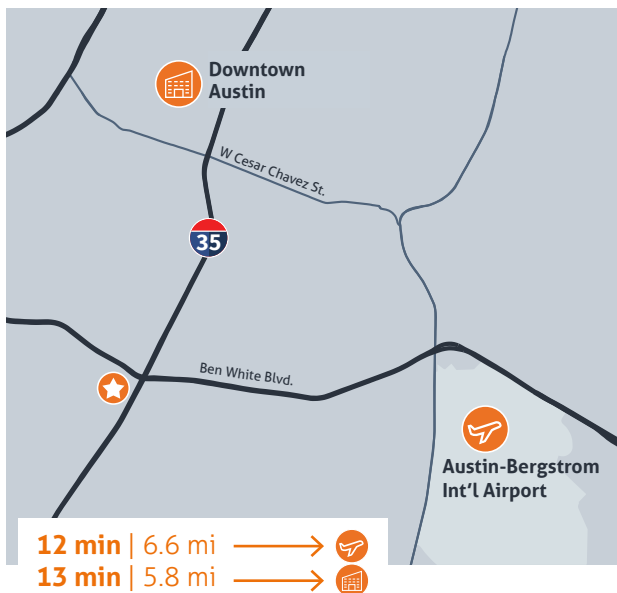
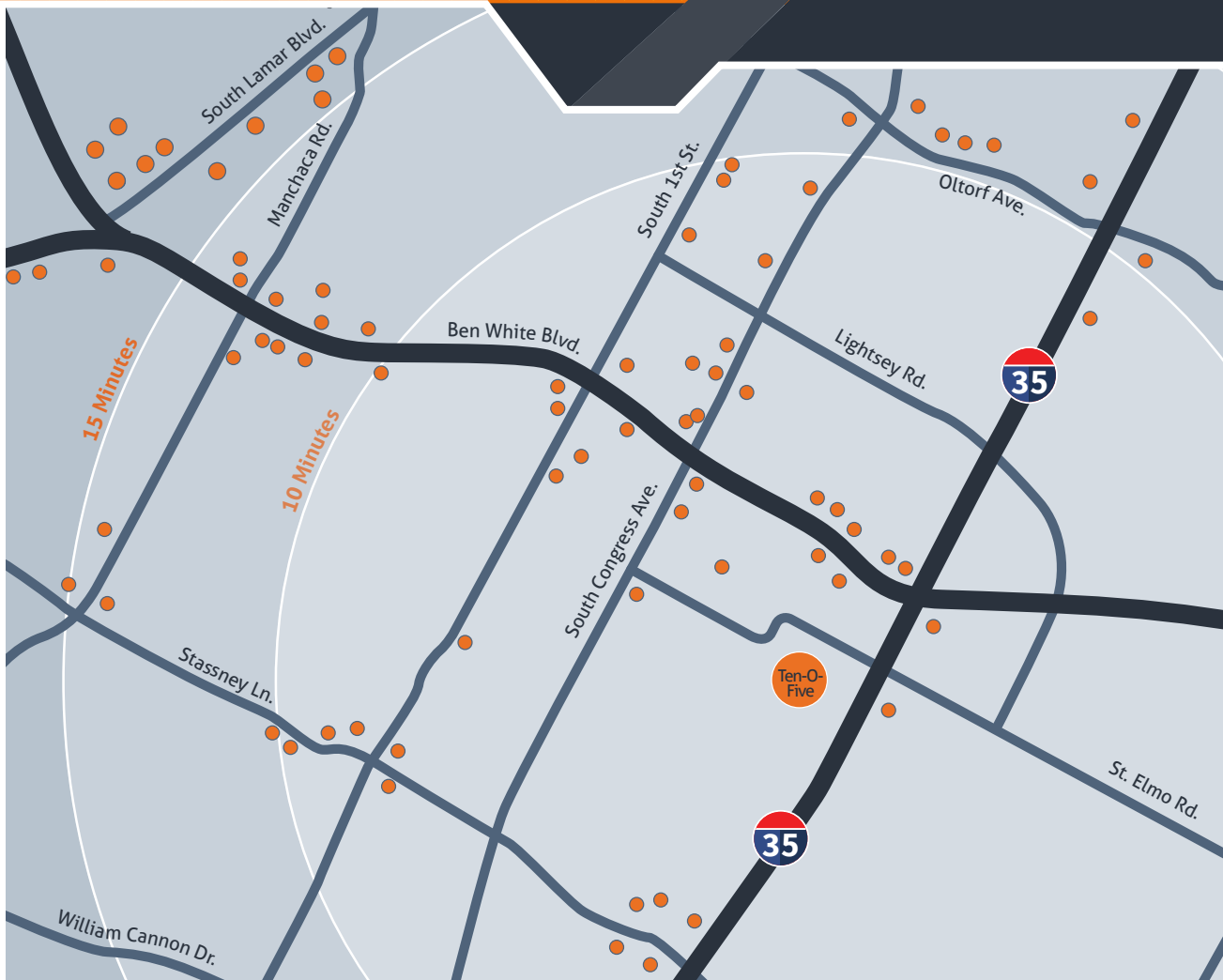
# BUILDING 10

11,815 RSF | Available Immediately



# TEN-O-FIVE

## Surrounding Area



### 10 min

- Chick-fil-A
- P. Terry's Burger Stand
- Bill Miller Bar-B-Q
- Onion Creek Grille
- ReVive!
- Hea Cafe
- Wendy's
- St. Elmo Brewing Company
- The Austin Winery
- San Juanita's Tacos
- Wendy's
- Taquiera Chapala
- Papalote Taco House
- and more

### 15 min

- Dan's Hamburgers
- Pinthouse Pizza
- Central Market
- Radio Coffee & Beer
- Pei Wei
- In-N-Out Burger
- Summer Moon Coffee
- Torchy's Tacos
- Poke-Poke
- Southside Flying Pizza
- Lucy's Fried Chicken
- Toss Pizzeria & Pub
- Cosmic Coffee & Beer Garden
- and more



# TEN-O-FIVE

1005 East St. Elmo Rd. | Austin, Texas 78745

**KEVIN KIMBROUGH**

kevin.kimbrough@am.jll.com

+1 512 225 1736

**COLTON MCCASLAND**

colton.mccasland@am.jll.com

+1 512 225 1738



Although information has been obtained from sources deemed reliable, JLL does not make any guarantees, warranties or representations, express or implied, as to the completeness or accuracy as to the information contained herein. Any projections, opinions, assumptions or estimates used are for example only. There may be differences between projected and actual results, and those differences may be material. JLL does not accept any liability for any loss or damage suffered by any party resulting from reliance on this information. If the recipient of this information has signed a confidentiality agreement with JLL regarding this matter, this information is subject to the terms of that agreement. ©2020. Jones Lang LaSalle IP, Inc. All rights reserved.