

Land for Sale  
Development Site



## 2937 Route 73 South

Maple Shade, New Jersey

- .41± acre lot on Route 73 South
- Block 180, Lot 1 and Block 159, Lots 26 & 13
- 138 feet of frontage on Route 73
- Traffic count on Route 73: 72,179± vehicles per day
- Curb cut on Route 73
- Zoned BD - Business Development
- Taxes \$6,414 (2017)

**SALE PRICE \$225,000**

For more information:

**Julie Kronfeld, SIOR**

+1 856 802 6516 • [julie.kronfeld@naimertz.com](mailto:julie.kronfeld@naimertz.com)

**Rebecca Ting, SIOR**

+1 856 234 9600 • [rebecca.ting@naimertz.com](mailto:rebecca.ting@naimertz.com)

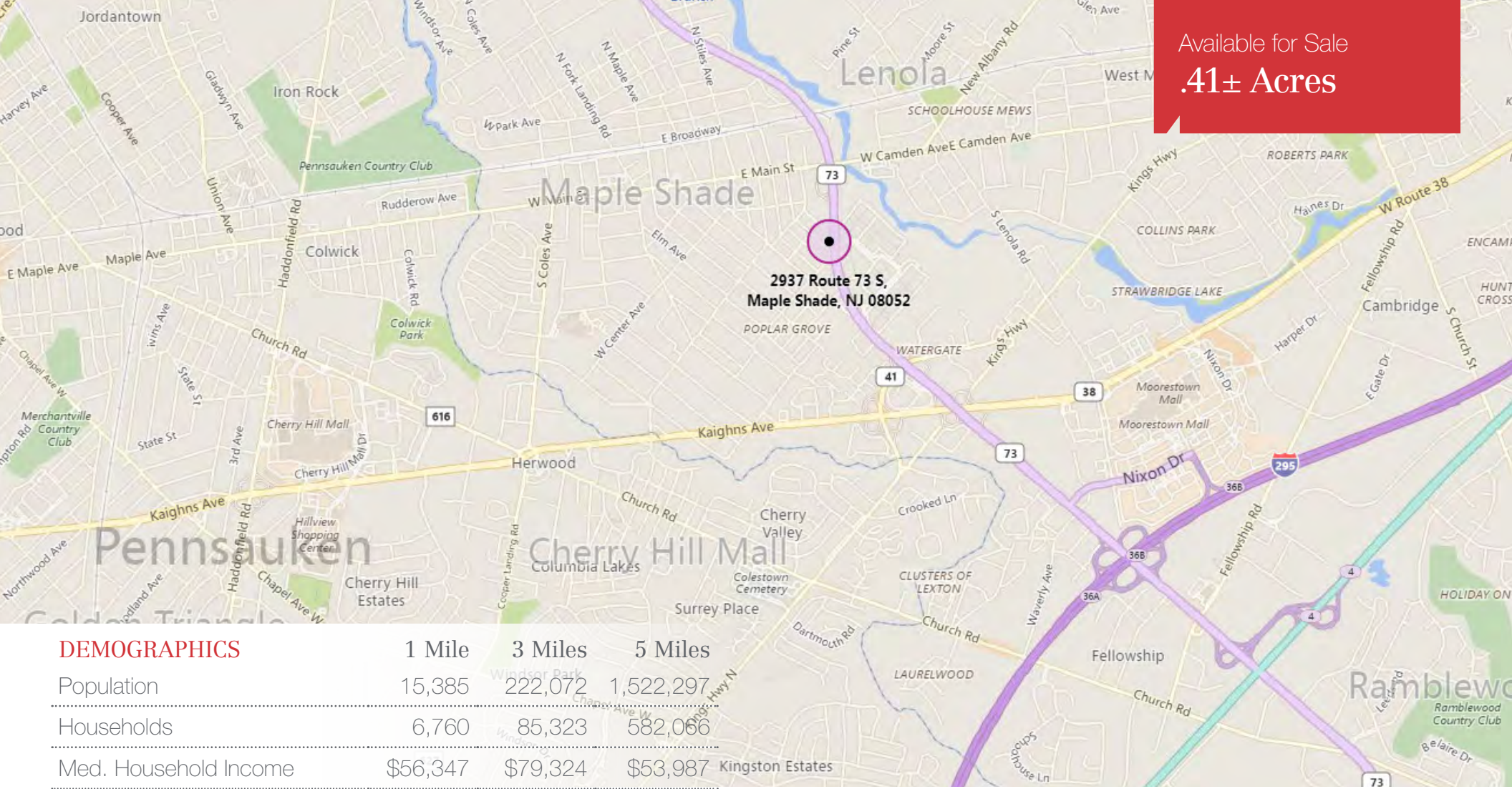


21 Roland Avenue  
Mount Laurel NJ 08054  
+1 856 234 9600

[naimertz.com](http://naimertz.com)

NO WARRANTY OR REPRESENTATION, EXPRESS OR IMPLIED, IS MADE AS TO THE ACCURACY OF THE INFORMATION CONTAINED HEREIN, AND THE SAME IS SUBMITTED SUBJECT TO ERRORS, OMISSIONS, CHANGE OF PRICE, RENTAL OR OTHER CONDITIONS, PRIOR SALE, LEASE OR FINANCING, OR WITHDRAWAL WITHOUT NOTICE, AND OF ANY SPECIAL LISTING CONDITIONS IMPOSED BY OUR PRINCIPALS NO WARRANTIES OR REPRESENTATIONS ARE MADE AS TO THE CONDITION OF THE PROPERTY OR ANY HAZARDS CONTAINED THEREIN ARE ANY TO BE IMPLIED.

Available for Sale  
**.41± Acres**



**DEMOGRAPHICS**

	1 Mile	3 Miles	5 Miles
Population	15,385	222,072	1,522,297
Households	6,760	85,323	582,066
Med. Household Income	\$56,347	\$79,324	\$53,987

**Location Information:**

- Approximately 1 mile from Route 38
- Approximately 2 miles to exit 36 of I-295
- Easy access to exit 4 of the New Jersey Turnpike
- Easy access to Philadelphia and area bridges

For more information:

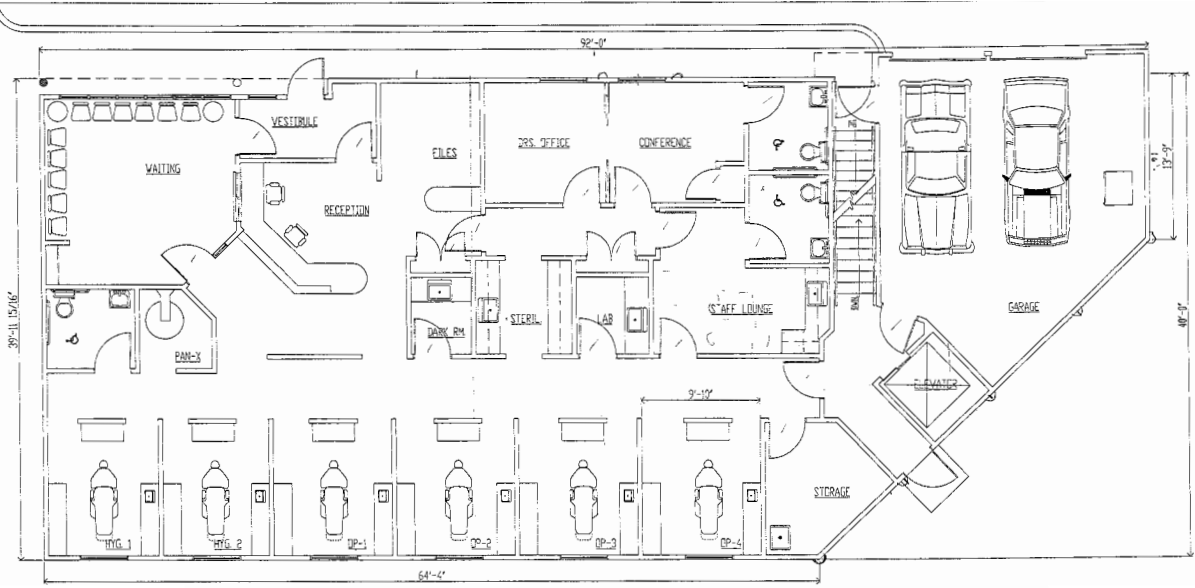
**Julie Kronfeld, SIOR**  
 +1 856 802 6516 • julie.kronfeld@naimertz.com  
**Rebecca Ting, SIOR**  
 +1 856 234 9600 • rebecca.ting@naimertz.com



21 Roland Avenue  
 Mount Laurel NJ 08054  
 +1 856 234 9600  
[naimertz.com](http://naimertz.com)

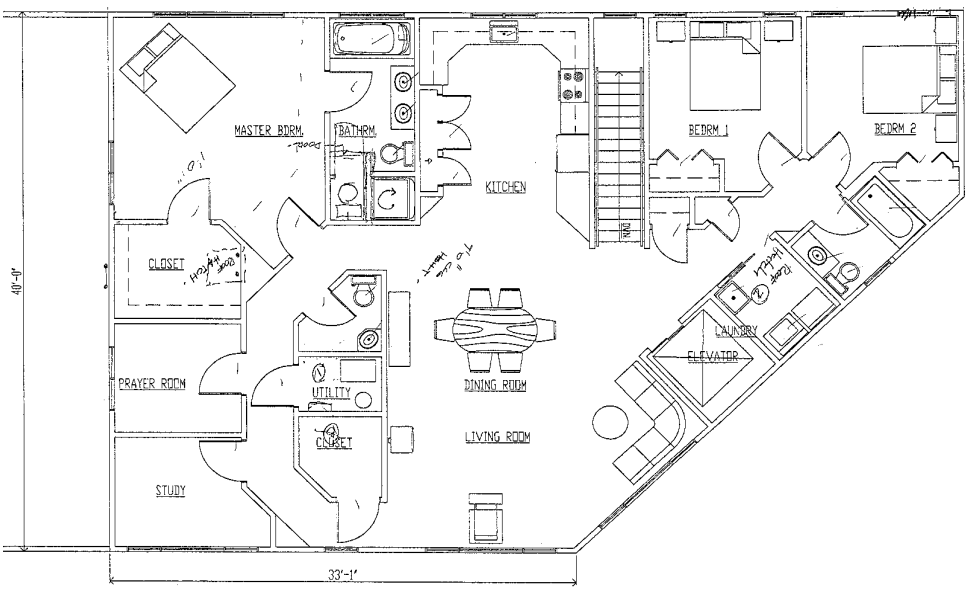
NO WARRANTY OR REPRESENTATION, EXPRESS OR IMPLIED, IS MADE AS TO THE ACCURACY OF THE INFORMATION CONTAINED HEREIN, AND THE SAME IS SUBMITTED SUBJECT TO ERRORS, OMISSIONS, CHANGE OF PRICE, RENTAL OR OTHER CONDITIONS, PRIOR SALE, LEASE OR FINANCING, OR WITHDRAWAL WITHOUT NOTICE, AND OF ANY SPECIAL LISTING CONDITIONS IMPOSED BY OUR PRINCIPALS NO WARRANTIES OR REPRESENTATIONS ARE MADE AS TO THE CONDITION OF THE PROPERTY OR ANY HAZARDS CONTAINED THEREIN ARE ANY TO BE IMPLIED.

# Mixed Use Conceptual Plan

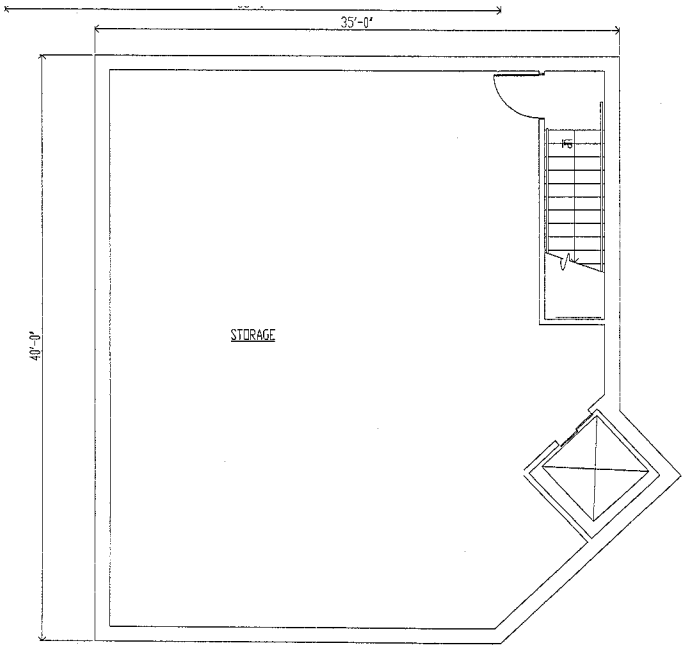


FIRST FLOOR PLAN

AREA OF BUILDING  
 BASEMENT-----1,387 S.F.  
 FIRST FLOOR--3,317 S.F.  
 SECOND FLOOR-2,067 S.F.  
 USE GROUP  
 FIRST FLOOR-B BUSINESS  
 SECOND FLOOR-R RESIDENTIAL  
 CONSTRUCTION-WOOD FRAME



SECOND FLOOR PLAN



BASEMENT PLAN



21 Roland Avenue  
 Mount Laurel NJ 08054  
 +1 856 234 9600  
[naimertz.com](http://naimertz.com)

NO WARRANTY OR REPRESENTATION, EXPRESS OR IMPLIED, IS MADE AS TO THE ACCURACY OF THE INFORMATION CONTAINED HEREIN, AND THE SAME IS SUBMITTED SUBJECT TO ERRORS, OMISSIONS, CHANGE OF PRICE, RENTAL OR OTHER CONDITIONS, PRIOR SALE, LEASE OR FINANCING, OR WITHDRAWAL WITHOUT NOTICE, AND OF ANY SPECIAL LISTING CONDITIONS IMPOSED BY OUR PRINCIPALS NO WARRANTIES OR REPRESENTATIONS ARE MADE AS TO THE CONDITION OF THE PROPERTY OR ANY HAZARDS CONTAINED THEREIN ARE ANY TO BE IMPLIED.