

# FOR LEASE: 31162 San Clemente Street, #109 – Hayward, CA



## Property Size: ±2,940 SF Available

As exclusive agents, we are pleased to offer the following space:



## PROPERTY HIGHLIGHTS:

- ±200 SF of Office
- ±14' Clear Height
- 1 Grade-Level Door

**AVAILABLE: May 1, 2019**

**ASKING: \$1.45/SF IG**



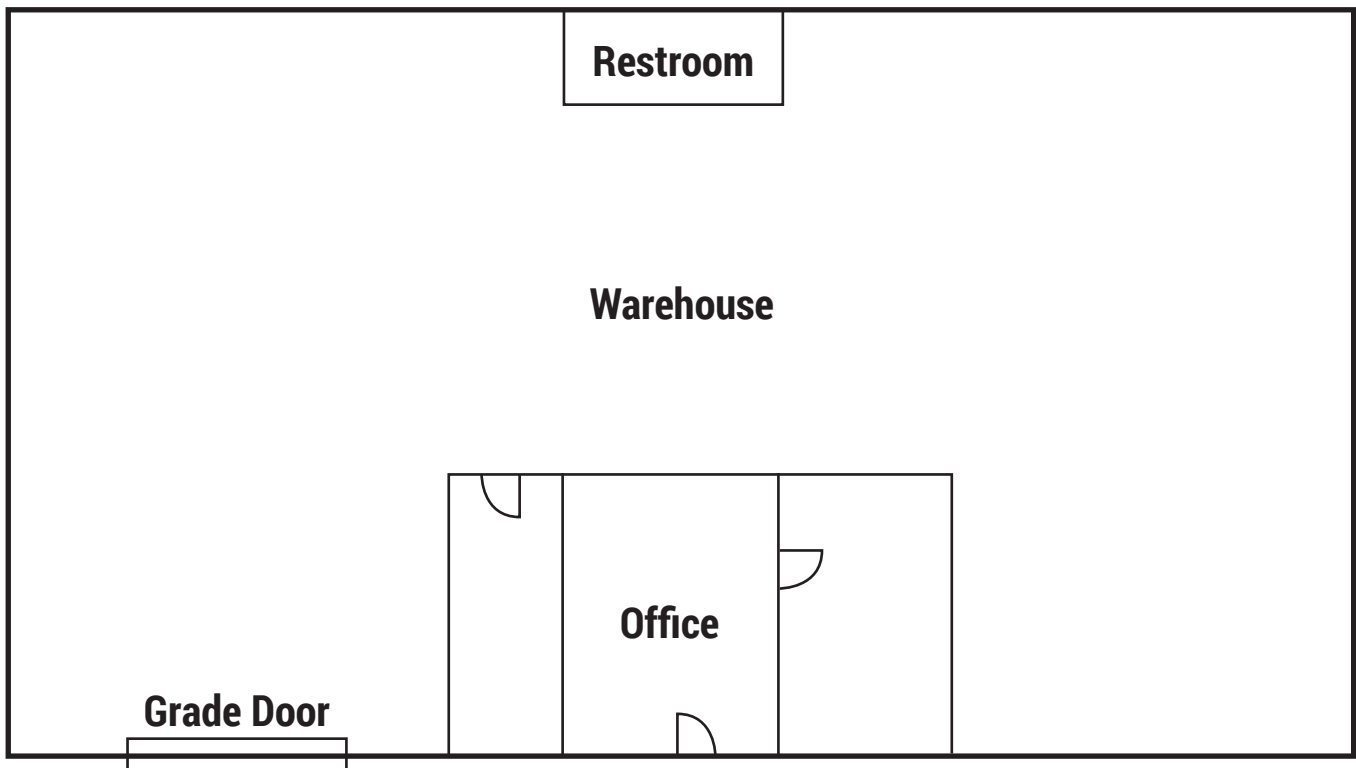
**Paul Mueller** 510.300.0216 [pmueller@ngkf.com](mailto:pmueller@ngkf.com) CA RE Lic. #00896726  
**Dan Dowd, SIOR** 510.300.0223 [ddowd@ngkf.com](mailto:ddowd@ngkf.com) CA RE Lic. #01432679  
**Spencer Jenkins** 510.300.0350 [sjenkins@ngkf.com](mailto:sjenkins@ngkf.com) CA RE Lic. #02029699

1111 Broadway, Suite 100, Oakland, CA 94607

[www.ngkf.com](http://www.ngkf.com)

# FOR LEASE:

## 31162 San Clemente Street, #109 – Hayward, CA



**Paul Mueller** 510.300.0216 [pmueller@ngkf.com](mailto:pmueller@ngkf.com) CA RE Lic. #00896726

**Dan Dowd, SIOR** 510.300.0223 [ddowd@ngkf.com](mailto:ddowd@ngkf.com) CA RE Lic. #01432679

**Spencer Jenkins** 510.300.0350 [sjenkins@ngkf.com](mailto:sjenkins@ngkf.com) CA RE Lic. #02029699



1111 Broadway, Suite 100, Oakland, CA 94607

[www.ngkf.com](http://www.ngkf.com)

The distributor of this communication is performing acts for which a real estate license is required. The information contained herein has been obtained from sources deemed reliable but has not been verified and no guarantee, warranty or representation, either express or implied, is made with respect to such information. Terms of sale or lease and availability are subject to change or withdrawal without notice.