

OFFICE
SPACE
FOR LEASE

±2,376 SF

High-image
flex facility

High-speed
data center
connectivity
available


TRANSWESTERN
REAL ESTATE
SERVICES

WILLOW LAKE TECH CENTER

424 E. State Parkway, Schaumburg, IL 60173

[Property Website](#)

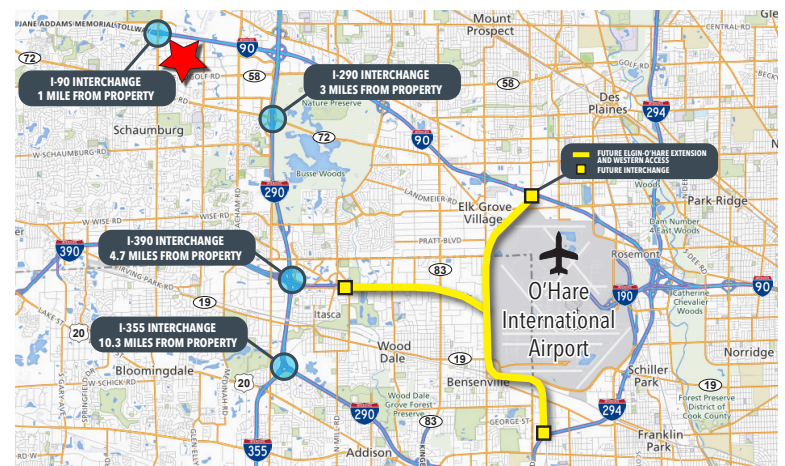


Specifications:

- Building Size: ±105,007 SF
- Available Size: ±2,376 SF
- Parking: 2.4/1000 SF
- Year Built: 1997
- Lease Rate: \$12.50 PSF MG

Highlights:

- Willow Lake Tech Center
- High-image flex facility
- Direct access to I-90 via Roselle Road
- Professionally owned and managed
- High-speed data center connectivity available



Contact Information:

Ross Lehrman
Senior Associate
847.588.5671
ross.lehrman@transwestern.com

Justin Lerner, SIOR
Executive Vice President
847.588.5665
justin.lerner@transwestern.com

The information provided herein was obtained from sources believed reliable; however, Transwestern makes no guarantees, warranties or representations as to the completeness of accuracy thereof. The presentation of this property is submitted subject to errors, omissions, change of price or conditions, prior to sale or lease, or withdrawal without notice. Copyright © 2020 Transwestern.

**OFFICE
SPACE
FOR LEASE**

±2,376 SF

High-image
flex facility

High-speed
data center
connectivity
available



TRANSWESTERN

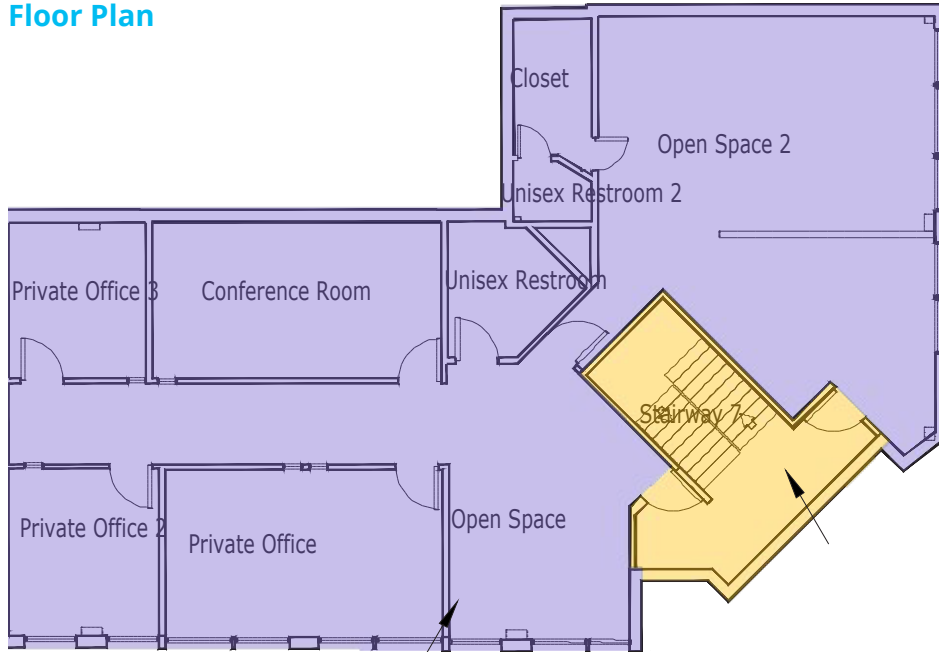
REAL ESTATE
SERVICES

WILLOW LAKE TECH CENTER

424 E. State Parkway, Schaumburg, IL 60173

[Property Website](#)

Floor Plan



Property Photos



Contact Information:

Ross Lehrman
Senior Associate
847.588.5671
ross.lehrman@transwestern.com

Justin Lerner, SIOR
Executive Vice President
847.588.5665
justin.lerner@transwestern.com

The information provided herein was obtained from sources believed reliable; however, Transwestern makes no guarantees, warranties or representations as to the completeness of accuracy thereof. The presentation of this property is submitted subject to errors, omissions, change of price or conditions, prior to sale or lease, or withdrawal without notice. Copyright © 2020 Transwestern.

OFFICE
SPACE
FOR LEASE

±2,052 SF

High-image
flex facility

High-speed
data center
connectivity
available


TRANSWESTERN
REAL ESTATE
SERVICES

WILLOW LAKE TECH CENTER

436 E. State Parkway, Schaumburg, IL 60173

[Property Website](#)

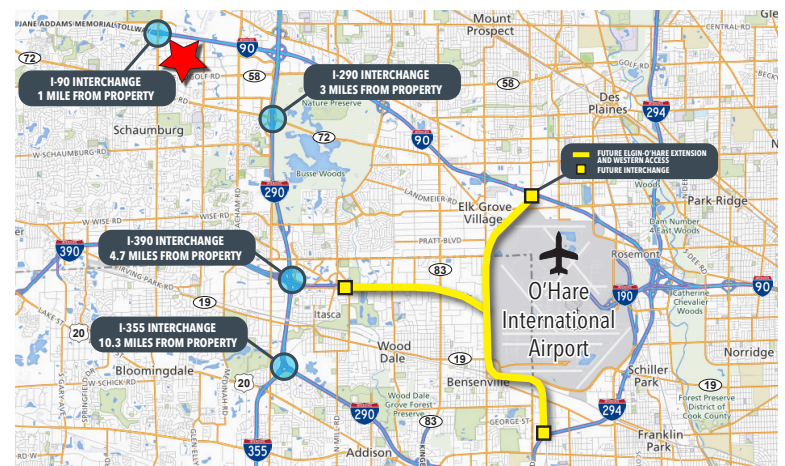


Specifications:

- Building Size: ±105,007 SF
- Available Size: ±2,052 SF
- Parking: 2.4/1000 SF
- Year Built: 1997
- Lease Rate: \$12.50 PSF MG

Highlights:

- Willow Lake Tech Center
- High-image flex facility
- Direct access to I-90 via Roselle Road
- Professionally owned and managed
- High-speed data center connectivity available



Contact Information:

Ross Lehrman
Senior Associate
847.588.5671
ross.lehrman@transwestern.com

Justin Lerner, SIOR
Executive Vice President
847.588.5665
justin.lerner@transwestern.com

The information provided herein was obtained from sources believed reliable; however, Transwestern makes no guarantees, warranties or representations as to the completeness of accuracy thereof. The presentation of this property is submitted subject to errors, omissions, change of price or conditions, prior to sale or lease, or withdrawal without notice. Copyright © 2020 Transwestern.

OFFICE
SPACE
FOR LEASE

±2,052 SF

High-image
flex facility

High-speed
data center
connectivity
available



TRANSWESTERN

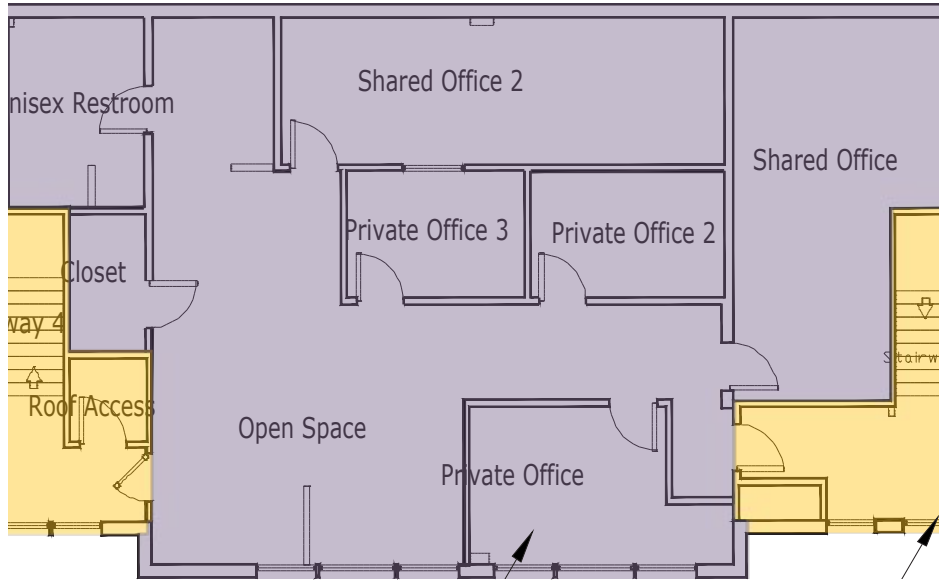
REAL ESTATE
SERVICES

WILLOW LAKE TECH CENTER

436 E. State Parkway, Schaumburg, IL 60173

[Property Website](#)

Floor Plan



Property Photos



Contact Information:

Ross Lehrman
Senior Associate
847.588.5671
ross.lehrman@transwestern.com

Justin Lerner, SIOR
Executive Vice President
847.588.5665
justin.lerner@transwestern.com

The information provided herein was obtained from sources believed reliable; however, Transwestern makes no guarantees, warranties or representations as to the completeness of accuracy thereof. The presentation of this property is submitted subject to errors, omissions, change of price or conditions, prior to sale or lease, or withdrawal without notice. Copyright © 2020 Transwestern.