

Mid Rivers Mall Dr
 372-394 Mid Rivers Mall Drive
 St. Peters, MO 63376

**880 SF RETAIL ENDCAP
 AVAILABLE FOR LEASE**



- **880 SF Retail Endcap Available**
- 394 Mid Rivers Mall Drive
- Prominent signage available on two sides of the building
- Located within St. Peters' premier retail corridor just north of Mexico Road
- Attractive retail strip center with excellent visibility and ample parking
- **LEASE RATE: \$1,370.00 PER MO. + NNN**

DEMOGRAPHICS	1 MILE	3 MILE
Population:	12,919	64,081
Daytime Employment:	6,398	23,348
No. of Households:	5,224	23,864
Average HH Income:	\$73,608	\$94,622

ANNUAL AVERAGE DAILY TRAFFIC	
Mid Rivers Mall Drive:	23,480 vehicles

**HUTKIN
 DEVELOPMENT COMPANY**

10829 Olive Boulevard
 Suite 200
 St. Louis, MO 63141

Telephone 314.872.9140
 FAX 314.872.9001

Visit our website:
www.hutkin.com

CONTACT

Tony Giarratano
 tony@hutkin.com
 Direct 314.708.4922
 Cell 314.276.2352

Bo Keefer
 bkeefe@hutkin.com
 Direct 314.708.1258
 Cell 314.973.1242

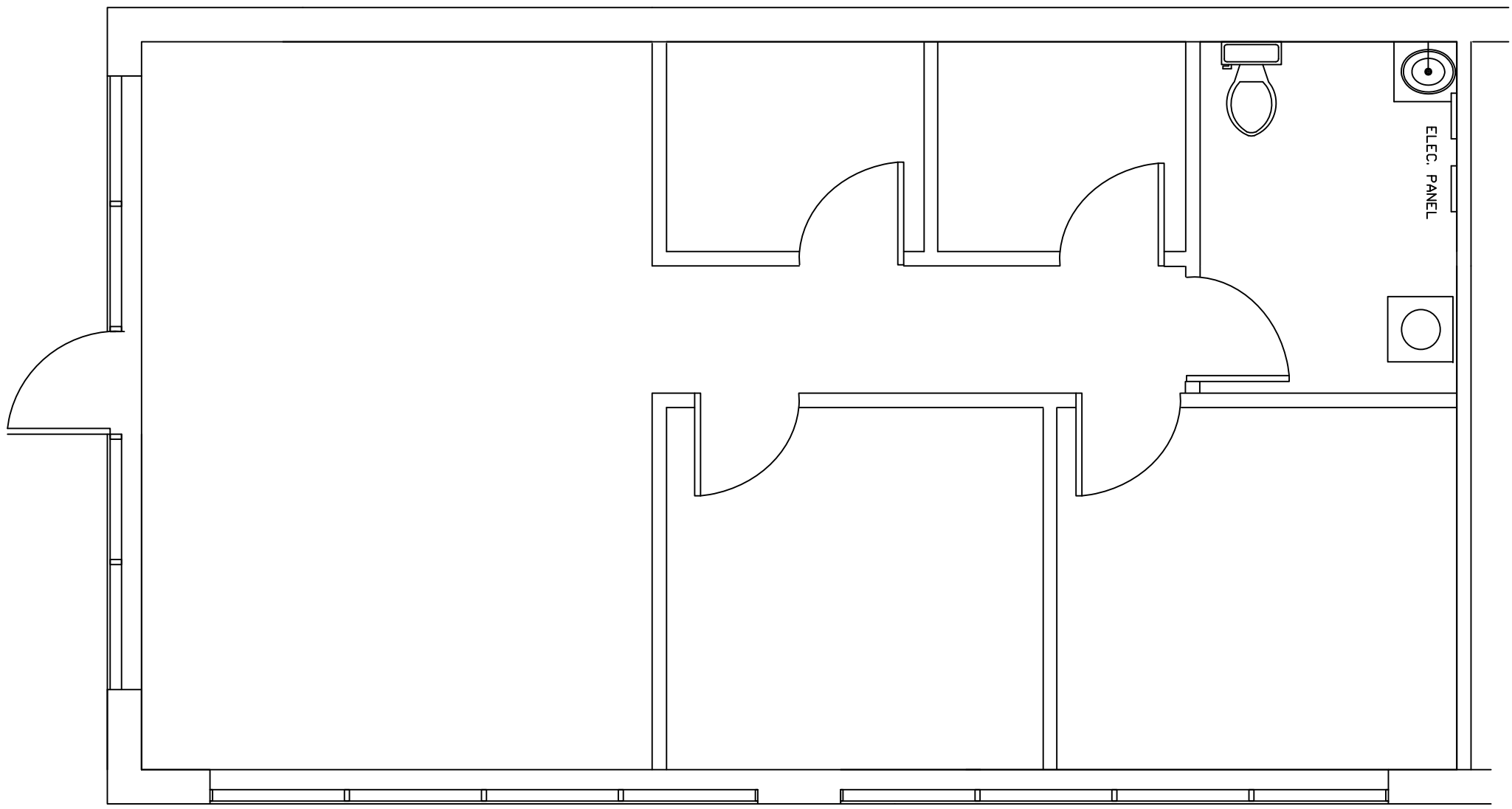
The information contained herein was obtained from a source we consider to be reliable. While we have no reason to doubt its accuracy, we do not guarantee it. All information contained herein is subject to change without notice

Mid Rivers Mall Dr

372-394 Mid Rivers Mall Drive

St. Peters, MO 63376

**880 SF RETAIL ENDCAP
AVAILABLE FOR LEASE**



394 MID RIVERS MALL DRIVE

880 SF

Mid Rivers Mall Dr

372-394 Mid Rivers Mall Drive

St. Peters, MO 63376

880 SF RETAIL ENDCAP AVAILABLE FOR LEASE



NO.	ADDRESS	STATUS	SIZE (SF)
1	372 Mid Rivers Mall Dr	Occupied	1,600
2	376-384 Mid Rivers Mall Dr	Occupied	5,000
3	390 Mid Rivers Mall Dr	Occupied	2,520
4	394 Mid Rivers Mall Dr	AVAILABLE	880

