

7423 SHAWNEE MISSION PARKWAY OVERLAND PARK, KANSAS 66202

AUTOMOTIVE/RETAIL BUILDING FOR SALE | 1,392± SF

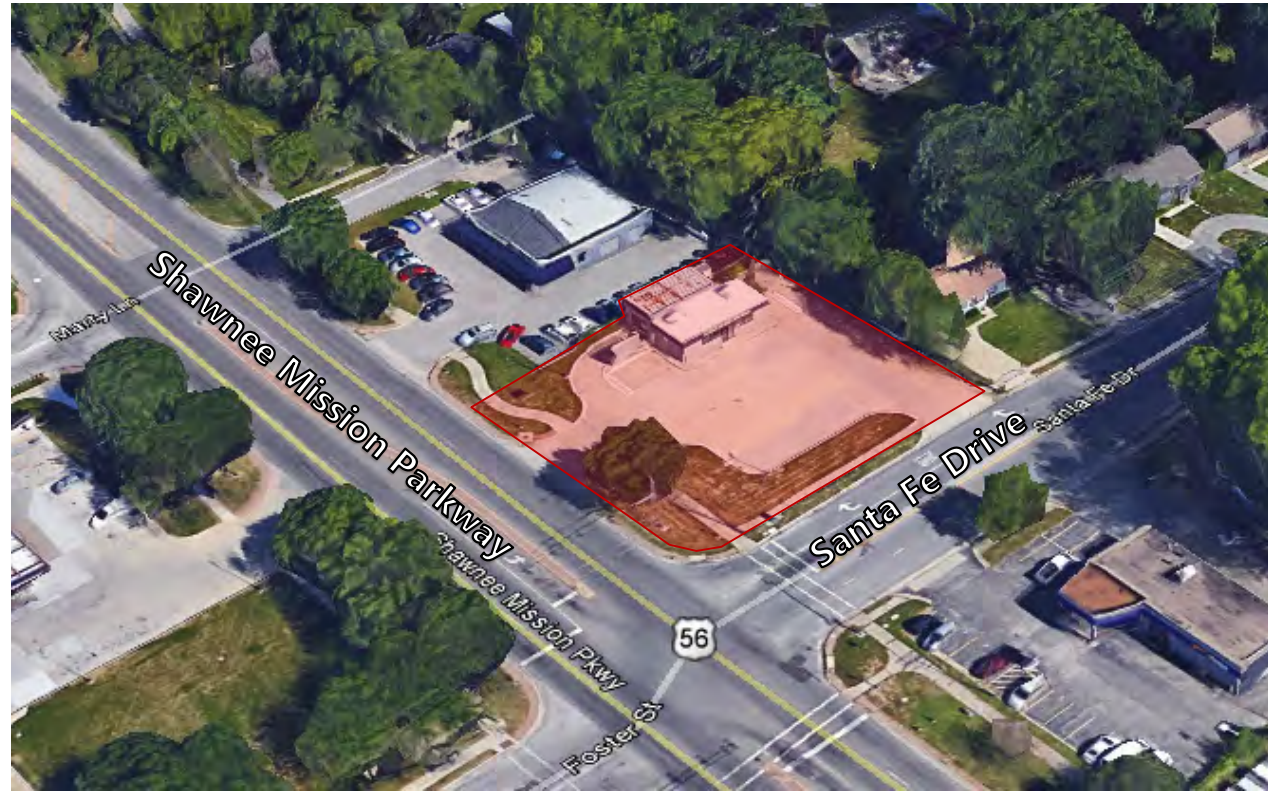
Rare corner building/lot for sale on Shawnee Mission Parkway

PROPERTY FEATURES

- Tremendous location on Shawnee Mission Parkway "For Sale"
- Ideal for automotive/retail
- 16,117± SF of land (.37± acres)
- 1,391± SF freestanding building
- High traffic area
- Superb signage opportunity
- **Traffic count: 38,000 CPD**
- **Population: 98,724 within a 3-mile radius**

ADDITIONAL INFO

SALE PRICE	\$585,000
ZONING	C-3 Commercial District
TAXES	\$9,639 (2016)



For more information, please contact:

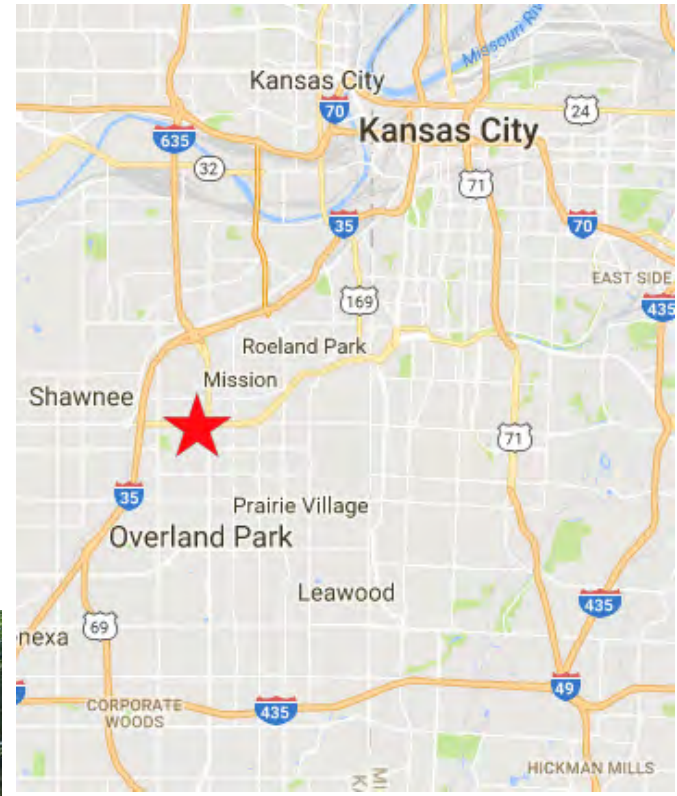
MATTHEW SEVERNS, SIOR, CCIM
Industrial Brokerage
816.936.8543 direct
mseverns@kessingerhunter.com

LEONARD POPPLEWELL
Commercial Brokerage
913.709.3623 mobile
lpopplewell@kessingerhunter.com

KESSINGER/HUNTER & COMPANY, LC
2600 Grand Boulevard, Suite 700
Kansas City, MO 64108
816.842.2690
www.kessingerhunter.com

7423 SHAWNEE MISSION PARKWAY, OVERLAND PARK, KANSAS 66202

Automotive/Retail Building for Sale



For more information, please contact:

MATTHEW SEVERNS, SIOR, CCIM
Industrial Brokerage
816.936.8543 direct
mseverns@kessingerhunter.com

LEONARD POPPLEWELL
Commercial Brokerage
913.709.3623 mobile
lpopplewell@kessingerhunter.com

KESSINGER/HUNTER & COMPANY, LC
2600 Grand Boulevard, Suite 700
Kansas City, MO 64108
816.842.2690
www.kessingerhunter.com

Information subject to verification and no liability for errors or omissions is assumed. Price subject to change.
To unsubscribe, please click on the link: khlistings@kessingerhunter.com