



CHARMING  
SPACE ON  
ECLECTIC  
EAST VILLAGE  
PARK BLOCK

## 437 EAST 9TH STREET

WEST STORE | BETWEEN AVENUE A & FIRST AVENUE

Ground Level: **650 SF Approx.** | Storage Basement: **300 SF (non-contiguous)** | Frontage: **10 Feet**  
Ceiling Heights: **10'** | Term: **10 Years** | Possession: **Immediate** | **Reduced Price: \$5,000/Mo**

### Space Features:

- Eclectic, busy East Village street close to Tompkins Square Park
- Perfect for either restaurant or boutique retail
- Venting possible, gas in the building, new HVAC
- Charming space in immaculate condition, exposed brick walls, wood floors
- Lots of light from front and back windows

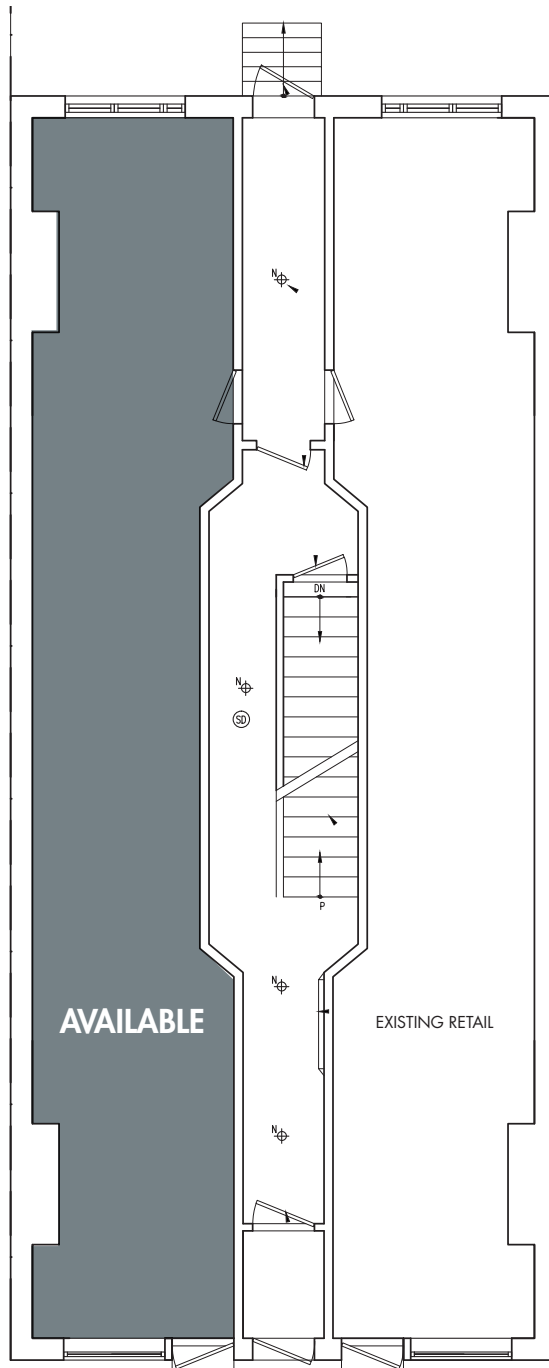
### Neighboring Tenants Include:

Superiority Burger • Three Seat Espresso • Dian Kitchen • The Upper Rust • Whitmans • Westville Bakery • Mr. White • Pink Olive • Zero Friends • Love Only • Lovemore & Do • Starbucks • Devorado • Flower Power

For More Information,  
Please Contact:

**Steve Rappaport**  
646.673.8750  
steve@sinvin.com

 **SINVIN**  
COMMERCIAL REAL ESTATE & ADVISORY



# 437 EAST 9TH STREET

WEST STORE | BETWEEN AVENUE A & FIRST AVENUE