

FOR LEASE - 7,350 SF

AIR FREIGHT I

1220 TEXAN TRAIL, SUITE 220, GRAPEVINE, TX 76051



LOCATION DATA

COUNTY: Tarrant
SUB-MARKET: W. DFW Air/ Grapevine Ind
SUBMARKET CLUSTER: DFW Airport Ind

BUILDING DATA

AVAILABLE SF: 7,350 SF
PROPOSED OFFICE SF: 1,202 SF
PROPOSED WAREHOUSE SF: 6,148 SF
CLEAR HEIGHT: 16'
COLUMN SPACING: 30x35'
LOADING CROSS DOCK: 7 Dock High Doors
1 Ramp

ECONOMIC DATA

LEASE RATE: \$9.00 IG



Phillip Rosenfeld, Director
prosenfeld@lee-associates.com
D: (972) 934-4040

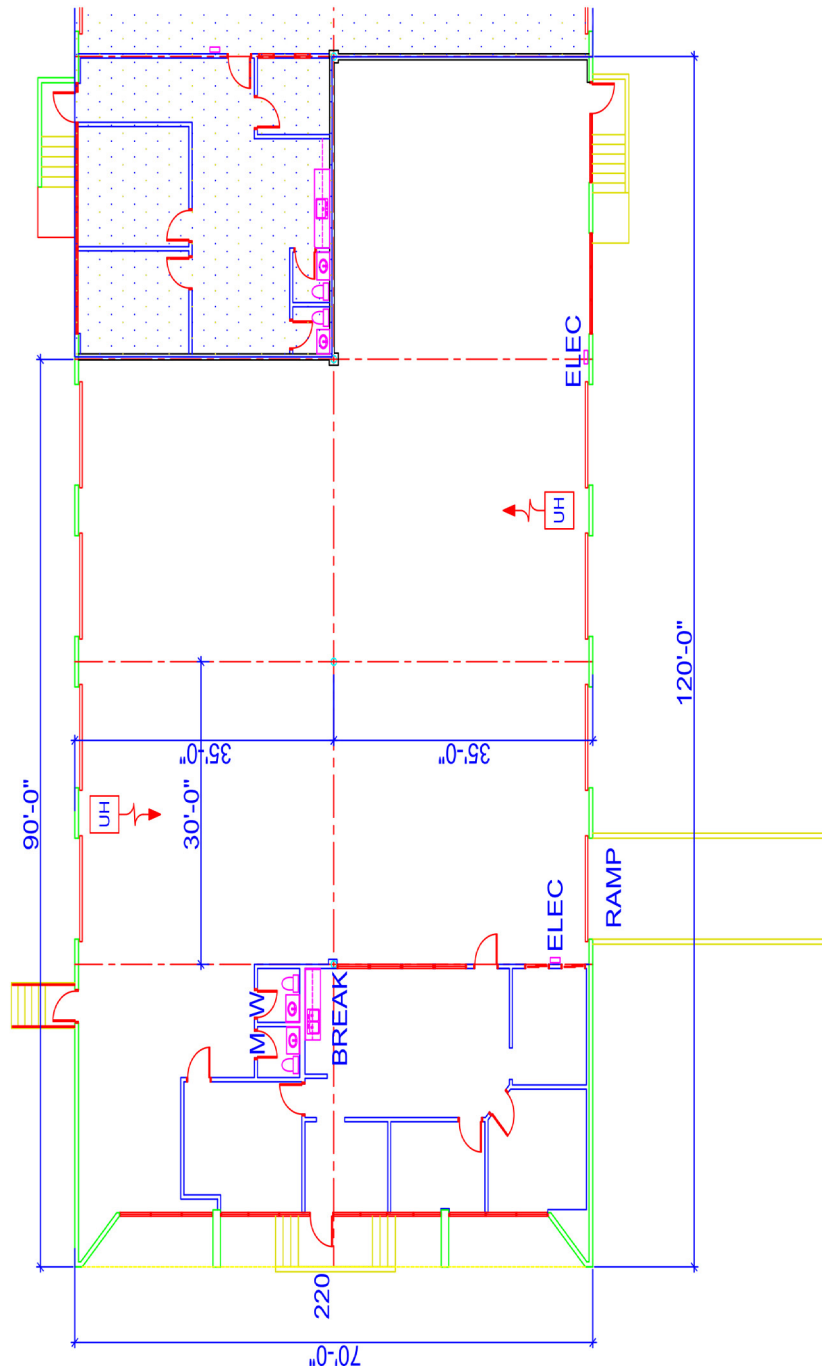
Matthew Thompson, Director
mthompson@lee-associates.com
D: (972) 934-4009

All information furnished regarding property for sale, rental or financing is from sources deemed reliable, but no warranty or representation is made to the accuracy thereof and same is submitted to errors, omissions, change of price, rental or other conditions prior to sale, lease or financing or withdrawal without notice. No liability of any kind is to be imposed on the broker herein.

FOR LEASE - 7,350 SF

AIR FREIGHT I

1220 TEXAN TRAIL, SUITE 220 GRAPEVINE, TX 76051



Proposed

Office: 1,202 SF

Warehouse: 6,148 SF

Total: 7,350 SF

Phillip Rosenfeld, Director
prosenfeld@lee-associates.com

D: (972) 934-4040

Matthew Thompson, Director
mthompson@lee-associates.com

D: (972) 934-4009

All information furnished regarding property for sale, rental or financing is from sources deemed reliable, but no warranty or representation is made to the accuracy thereof and same is submitted to errors, omissions, change of price, rental or other conditions prior to sale, lease or financing or withdrawal without notice. No liability of any kind is to be imposed on the broker herein.