

# 499 BROADWAY



BROADWAY ENTRANCE



GROUND FLOOR INTERIOR

# SPACE DETAILS

### LOCATION

West block between Broome and Spring Streets

### APPROXIMATE SIZE

Ground Floor	4,000 SF
Lower Level	4,000 SF
Total	8,000 SF

### CEILING HEIGHT

Ground Floor	16 FT
Lower Level	10 FT

### POSSESSION

Q1 2021

### TERM

Negotiable

### FRONTAGE

18 FT on Broadway

### SITE STATUS

Currently Alex Mill  
Formerly Brandy Melville and Swarovski

### NEIGHBORS

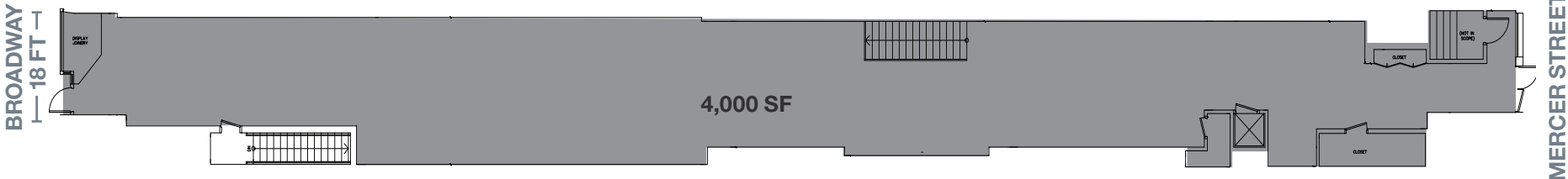
Levi's, Bloomingdale's, Sunglass Hut, Pandora, Rituals and Zara

### COMMENTS

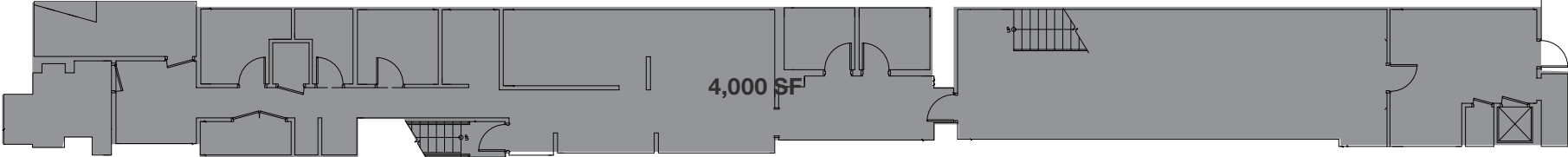
Blockthrough retail space with entrances on Broadway and Mercer Street  
Turnkey opportunity surrounded by best in class co-tenancy  
Beautiful exposed brick with all vertical transportation in place



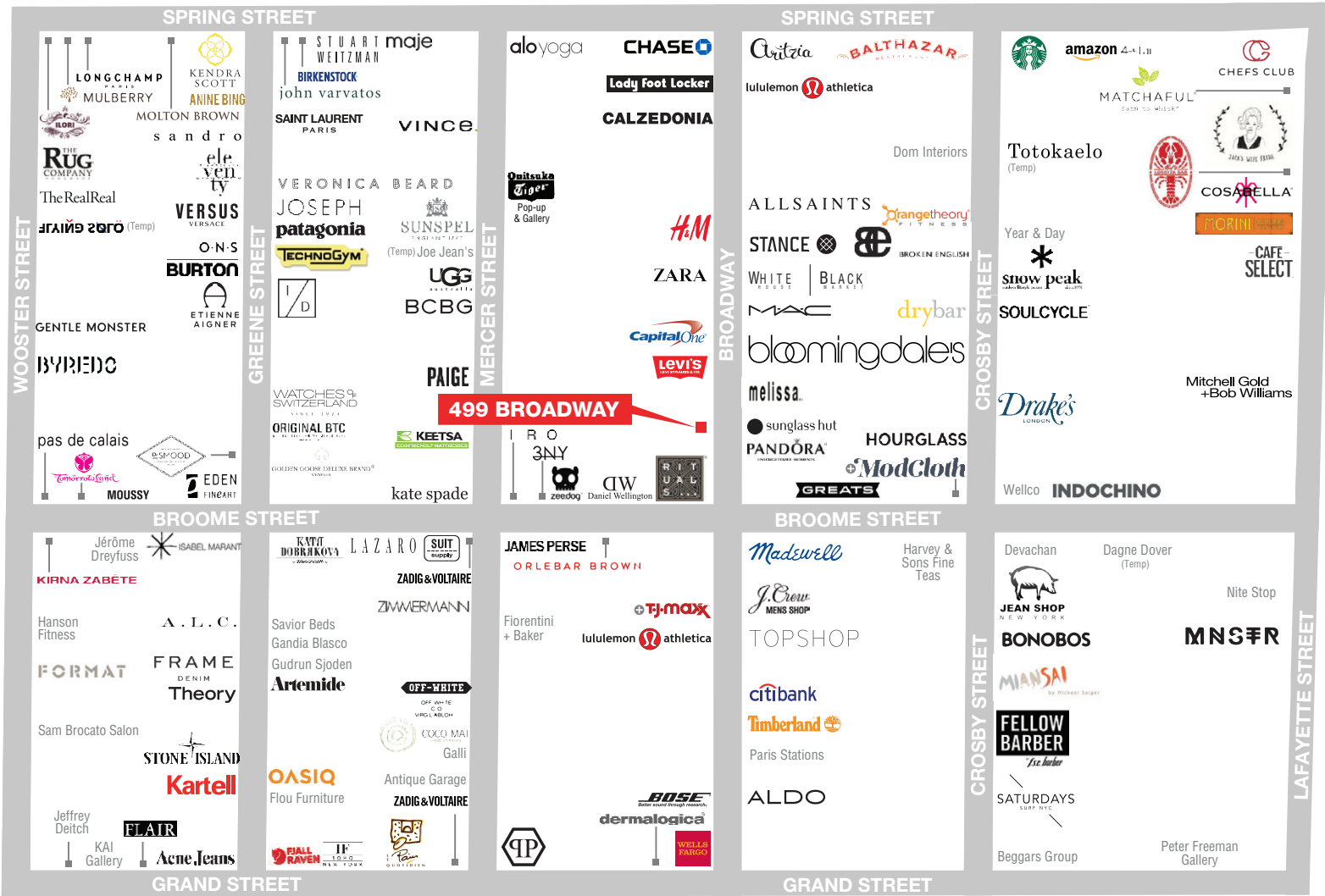
### GROUND FLOOR



### LOWER LEVEL



# AREA RETAIL



⊕ COMING SOON

## CONTACT EXCLUSIVE AGENTS

**JOSHUA STRAUSS**  
212.331.0126  
joshua.strauss@ngkf.com

**SCOTT ZINOVY**  
212.916.3364  
scott.zinovoy@ngkf.com



NGKF.COM

© 2020 NEWMARK KNIGHT FRANK RETAIL. The information contained herein has been obtained from sources deemed reliable but has not been verified and no guarantee, warranty or representation, either express or implied, is made with respect to such information. Terms of sale or lease and availability are subject to change or withdrawal without notice.