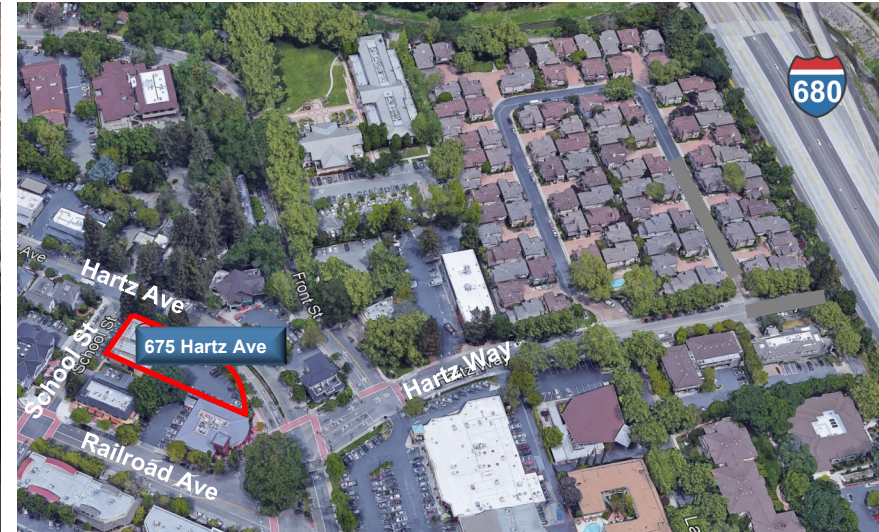


FOR LEASE
675 Hartz Ave.
Danville, CA



Available Space

- Suite 102 - ±559 RSF
- Suite 106 - ±486 RSF*
- Suite 107 - ±486 RSF*
- Suite 109 - ±889 RSF*
- Suite 202 - ±559 RSF
- Suite 207 - ±486 RSF
- Suite 310 - ±1,507 RSF
- Suite 320 - ±540 RSF

*Suites 106, 107, and 109 are contiguous for a total of ±1,861 RSF

ASKING RATE: \$3.25 FULL SERVICE

Property Attributes

- In the heart of downtown Danville's retail district
- Twenty-nine (29) onsite parking stalls
- Direct access to I-680

For more information, please contact:

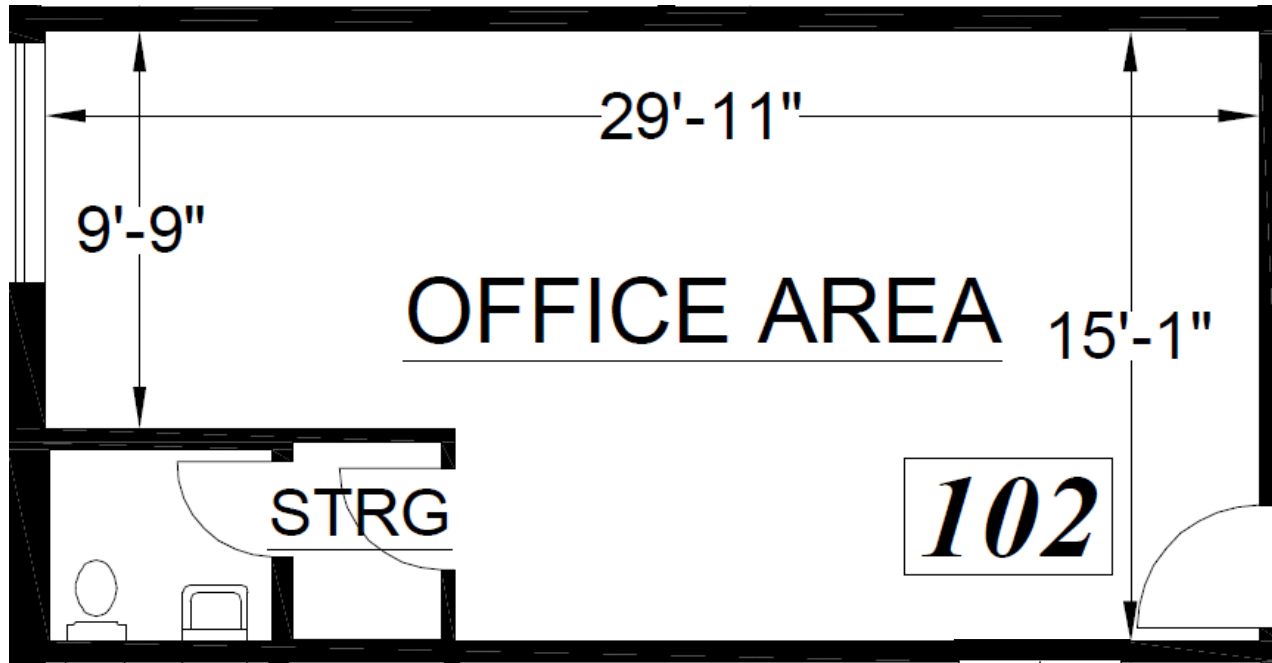
Chris Baker
Senior Director
+1 925 627 2888
chris.baker@cushwake.com
LIC #01334466

[View Site Specific COVID-19 Prevention Plan](#)

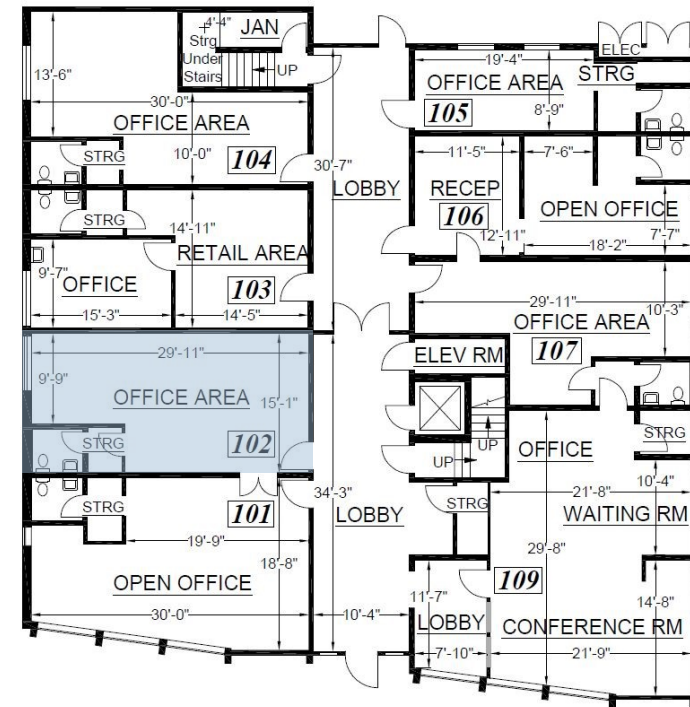
1333 N. California Blvd., Suite 500
Walnut Creek, CA 94596

ph: +1 925 935 0770
fx: +1 925 935 3409

cushmanwakefield.com



Suite 102
 ±559 RSF



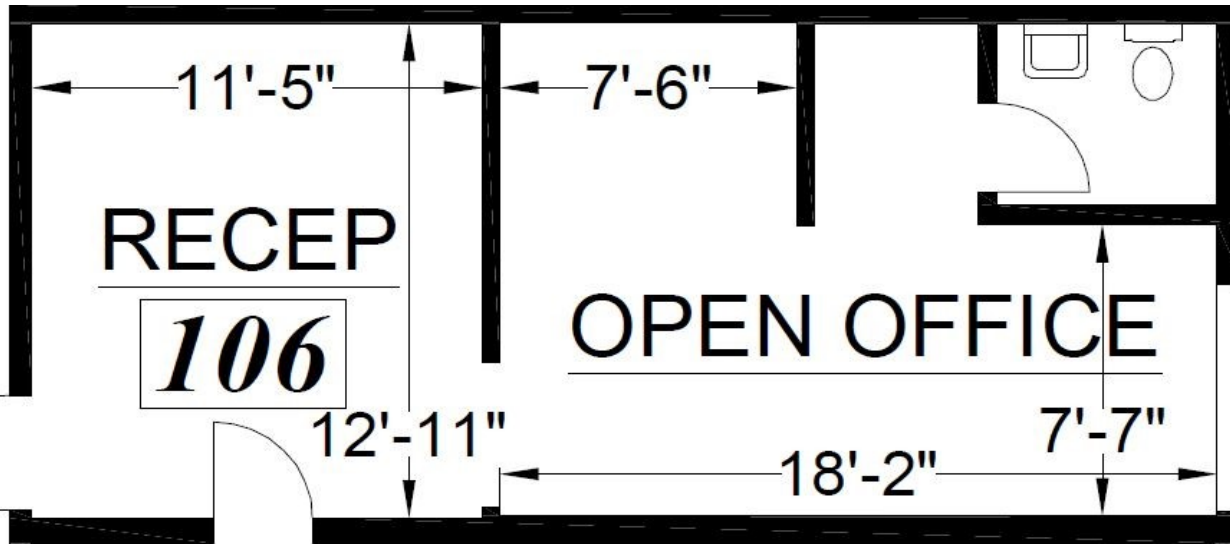
For more information, please contact:

Chris Baker
 Senior Director
 +1 925 627 2888
 chris.baker@cushwake.com
 LIC #01334466

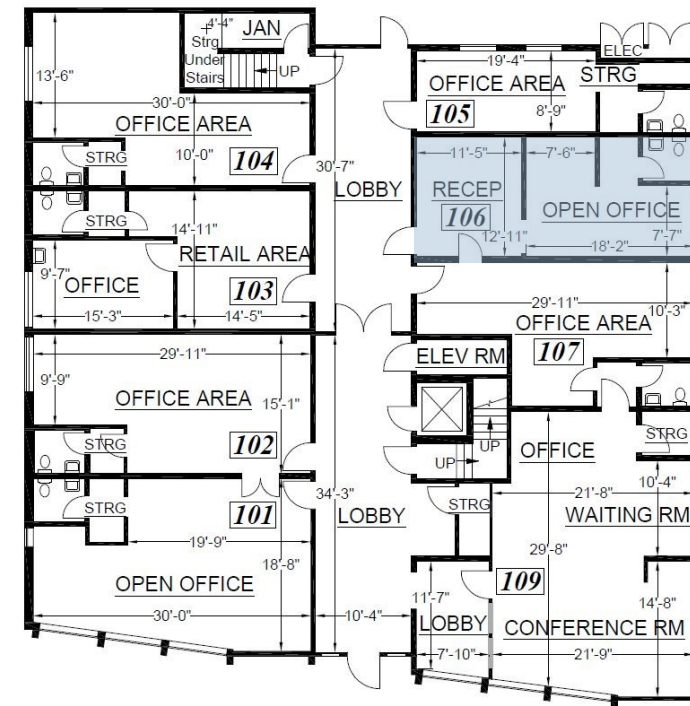
1333 N. California Blvd., Suite 500
 Walnut Creek, CA 94596

ph: +1 925 935 0770
 fx: +1 925 935 3409

cushmanwakefield.com



Suite 106
±486 RSF



For more information, please contact:

Chris Baker
Senior Director
+1 925 627 2888
chris.baker@cushwake.com
LIC #01334466

1333 N. California Blvd., Suite 500
Walnut Creek, CA 94596

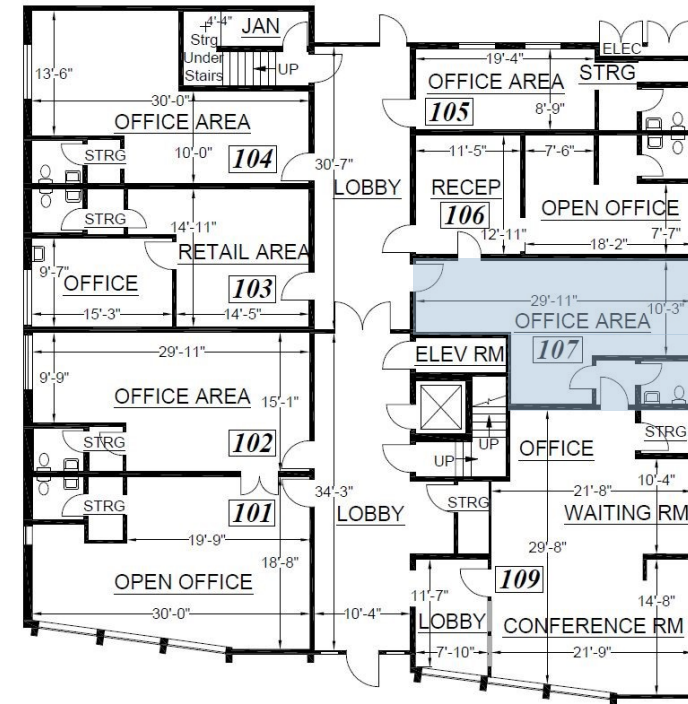
ph: +1 925 935 0770
fx: +1 925 935 3409

cushmanwakefield.com

29'-11" 10'-3"
OFFICE AREA

107

Suite 107
±486 RSF



For more information, please contact:

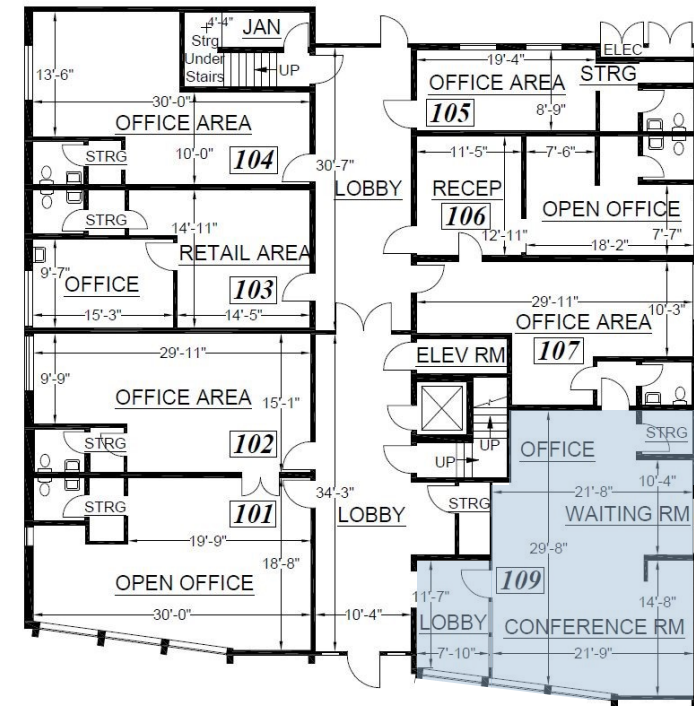
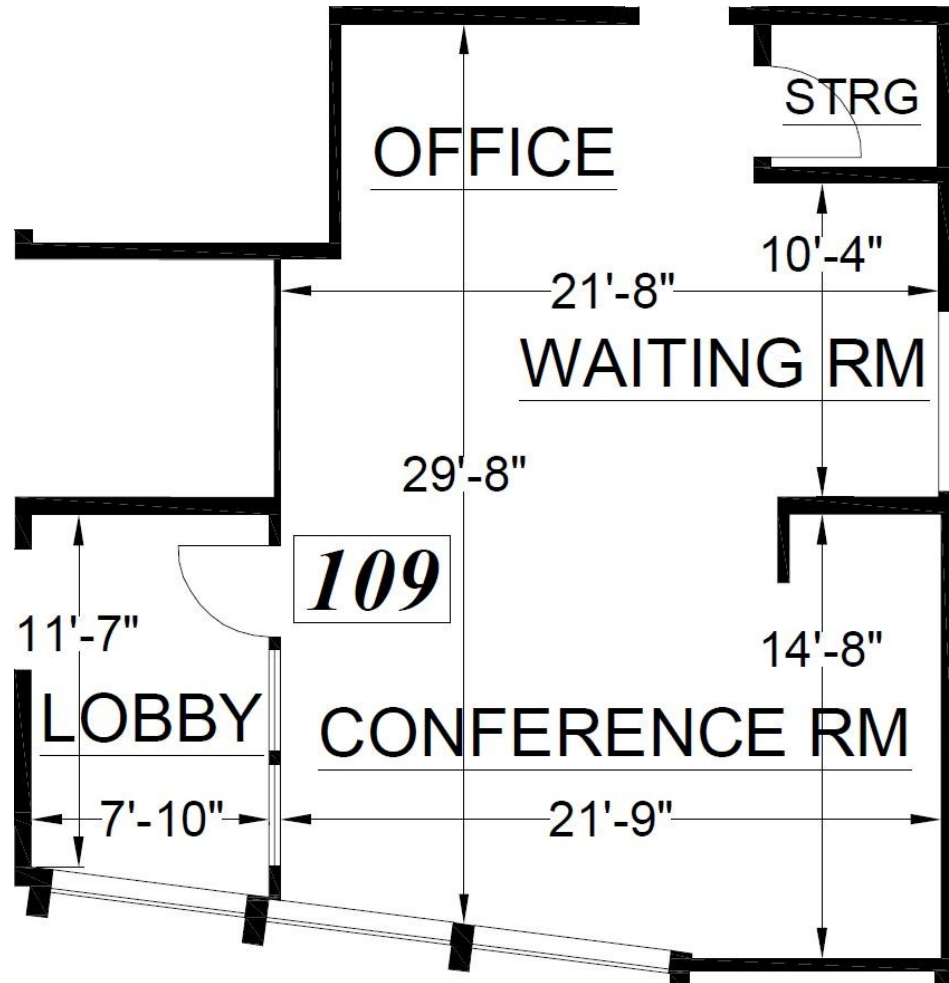
Chris Baker
Senior Director
+1 925 627 2888
chris.baker@cushwake.com
LIC #01334466

1333 N. California Blvd., Suite 500
Walnut Creek, CA 94596

ph: +1 925 935 0770
fx: +1 925 935 3409

cushmanwakefield.com

Suite
109
±889



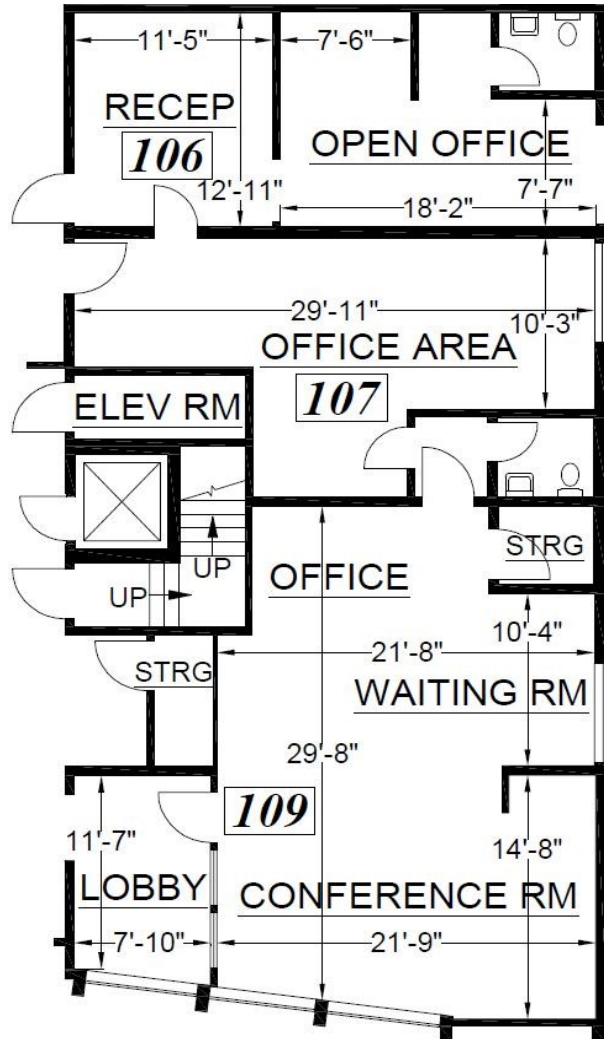
For more information, please contact:

Chris Baker
Senior Director
+1 925 627 2888
chris.baker@cushwake.com
LIC #01334466

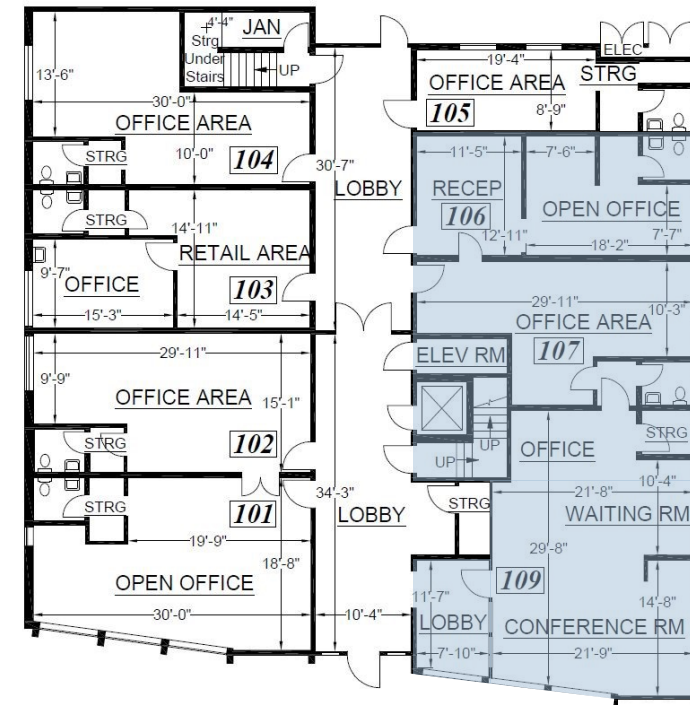
1333 N. California Blvd., Suite 500
Walnut Creek, CA 94596

ph: +1 925 935 0770
fx: +1 925 935 3409

cushmanwakefield.com



Suites 106, 107, and
109
±1,861 RSF



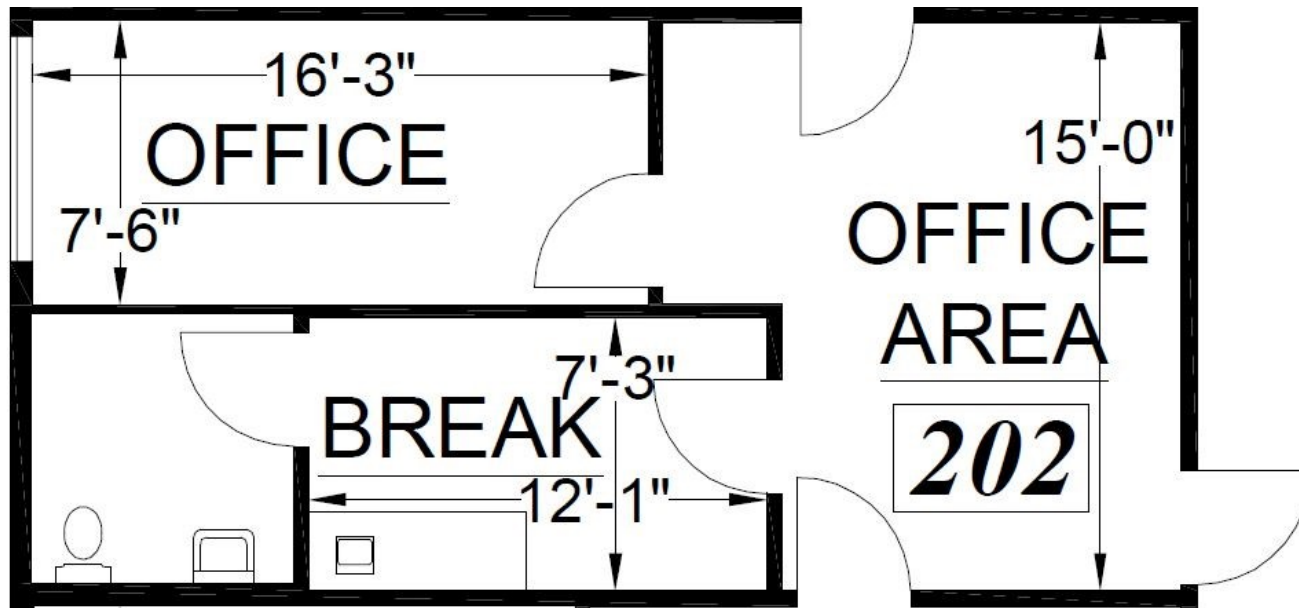
For more information, please contact:

Chris Baker
Senior Director
+1 925 627 2888
chris.baker@cushwake.com
LIC #01334466

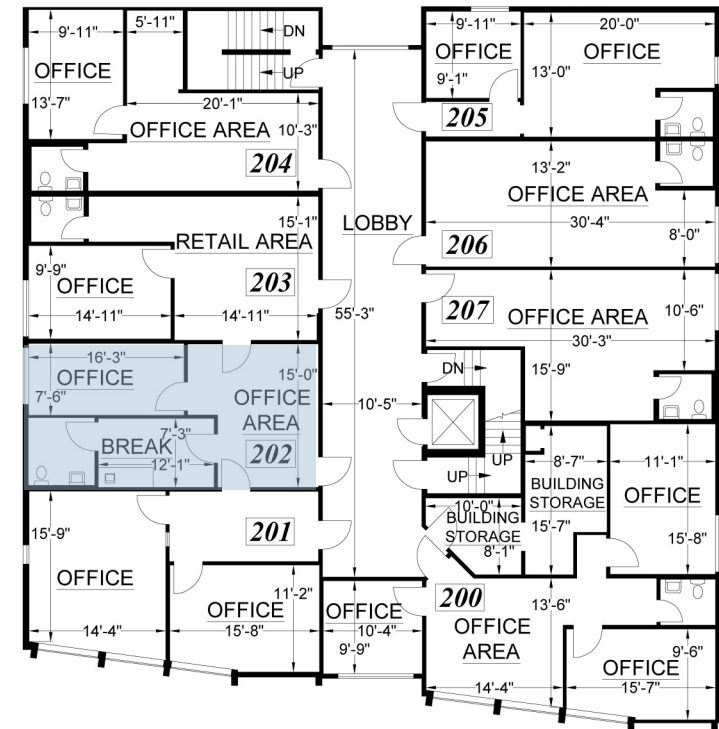
1333 N. California Blvd., Suite 500
Walnut Creek, CA 94596

ph: +1 925 935 0770
fx: +1 925 935 3409

cushmanwakefield.com



Suite 202
±559 RSF



For more information, please contact:

Chris Baker
Senior Director
+1 925 627 2888
chris.baker@cushwake.com
LIC #01334466

1333 N. California Blvd., Suite 500
Walnut Creek, CA 94596

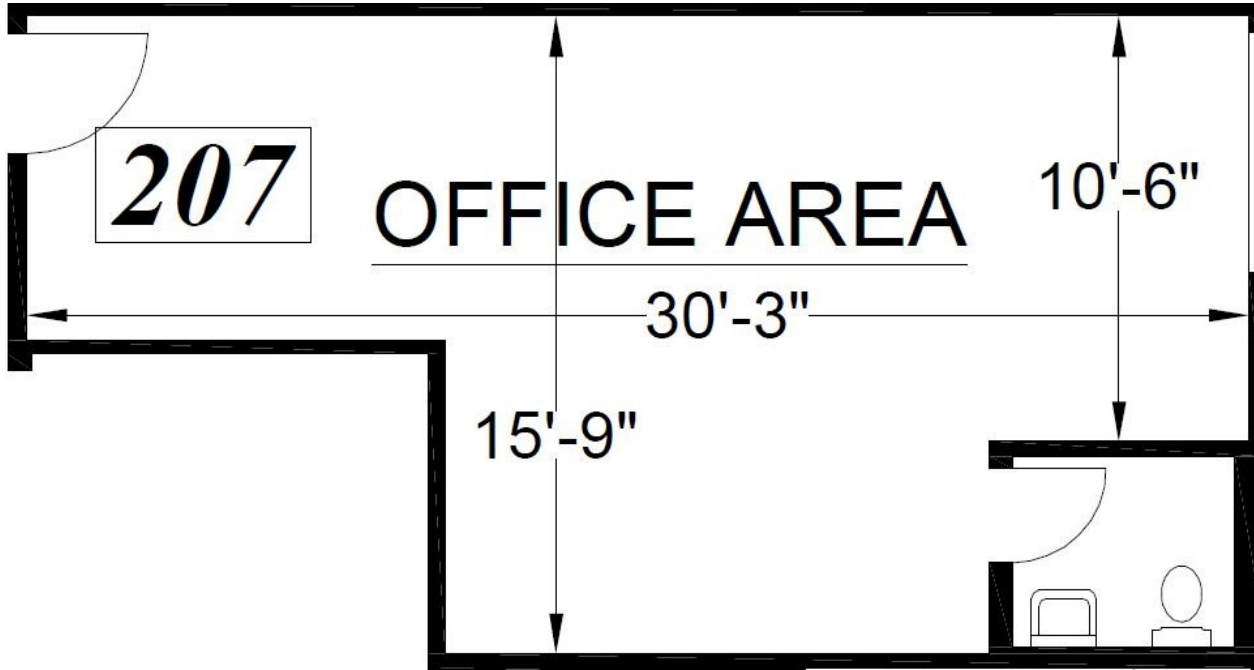
ph: +1 925 935 0770
fx: +1 925 935 3409

cushmanwakefield.com

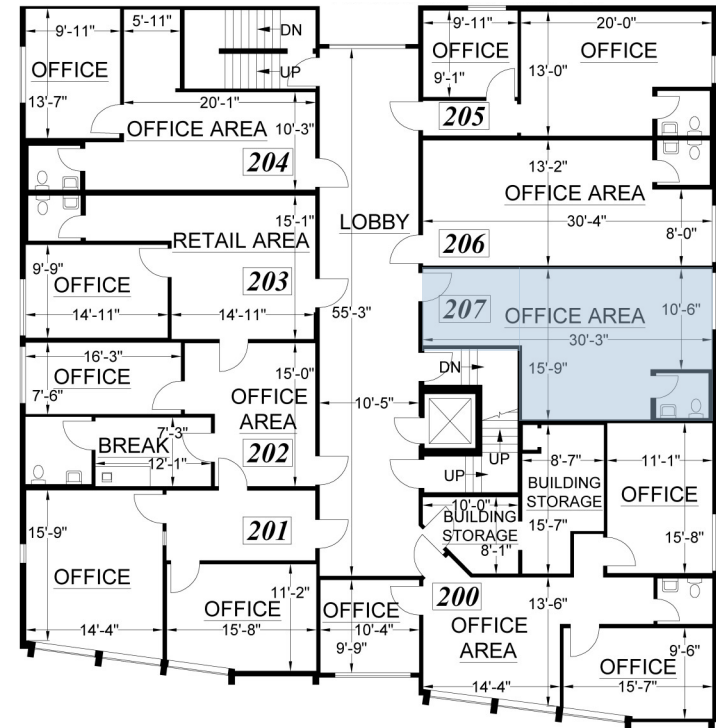


**CUSHMAN &
WAKEFIELD**

FOR LEASE
675 Hartz Ave.
Danville, CA



Suite 207
±486 RSF



For more information, please contact:

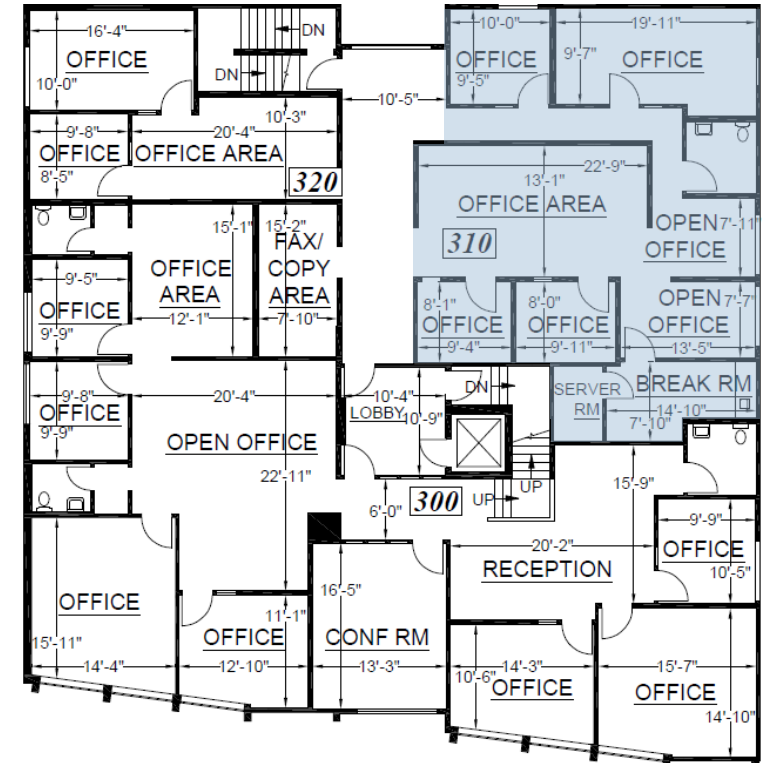
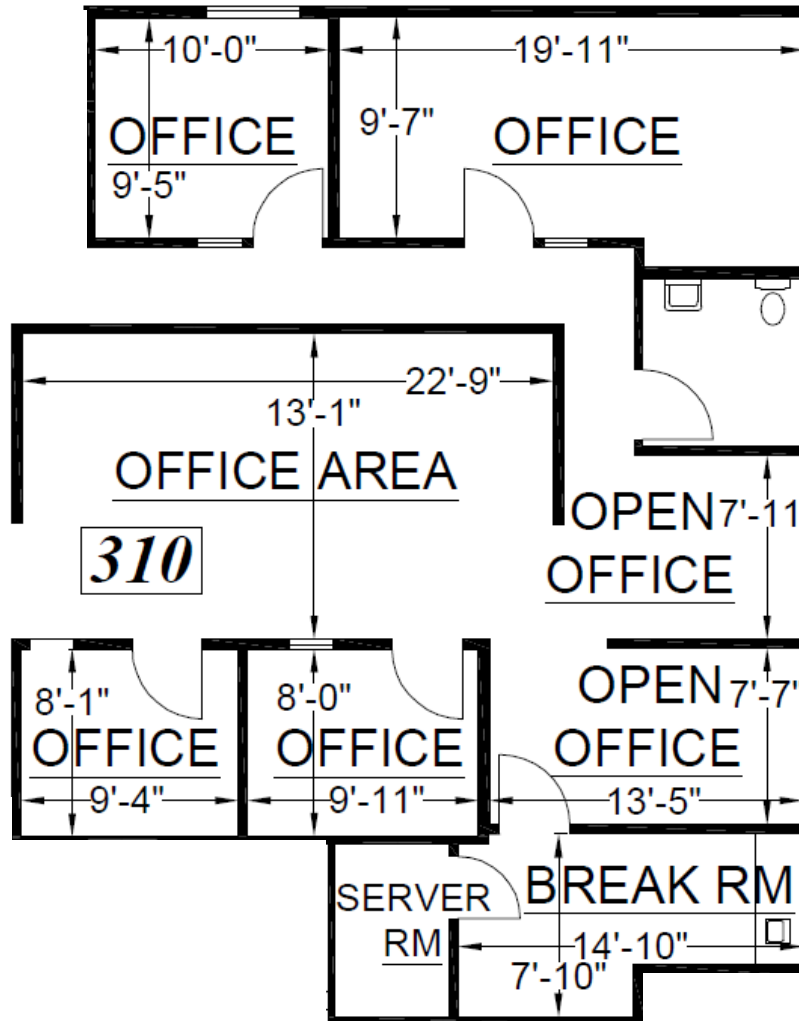
Chris Baker
Senior Director
+1 925 627 2888
chris.baker@cushwake.com
LIC #01334466

1333 N. California Blvd., Suite 500
Walnut Creek, CA 94596

ph: +1 925 935 0770
fx: +1 925 935 3409

cushmanwakefield.com

Suite 310
±1,507



For more information, please contact:

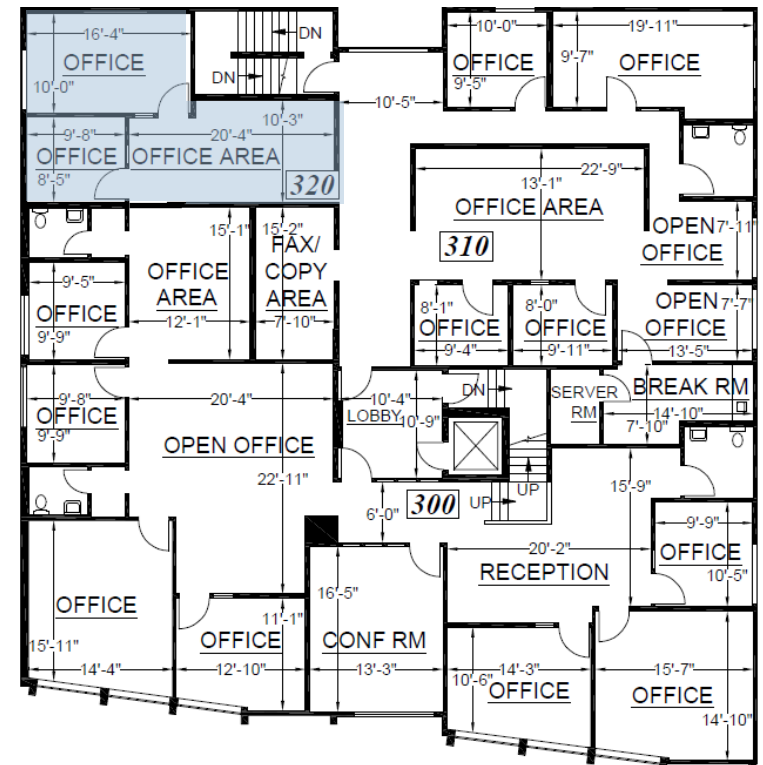
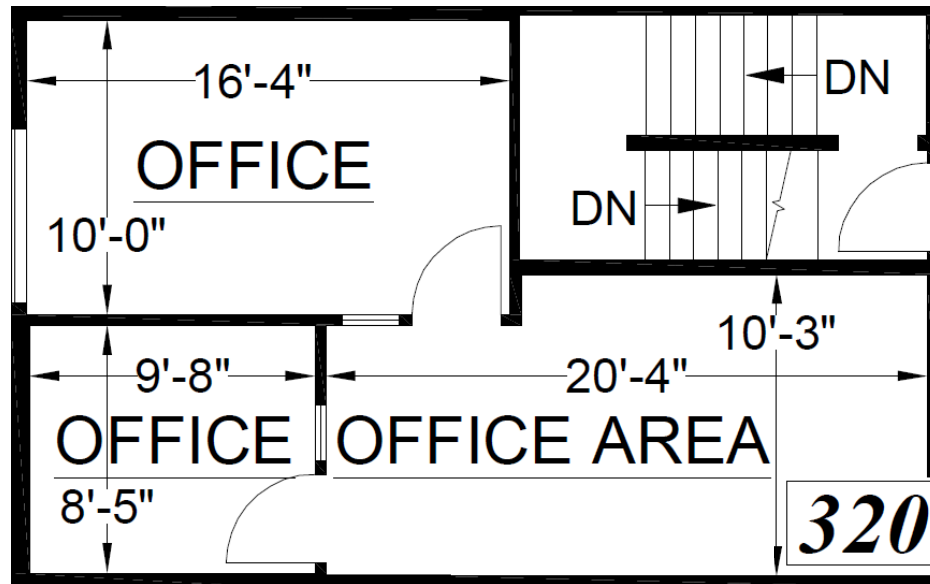
Chris Baker
Senior Director
+1 925 627 2888
chris.baker@cushwake.com
LIC #01334466

1333 N. California Blvd., Suite 500
Walnut Creek, CA 94596

ph: +1 925 935 0770
fx: +1 925 935 3409

cushmanwakefield.com

Suite 320
±540 RSF



For more information, please contact:

Chris Baker
Senior Director
+1 925 627 2888
chris.baker@cushwake.com
LIC #01334466

1333 N. California Blvd., Suite 500
Walnut Creek, CA 94596

ph: +1 925 935 0770
fx: +1 925 935 3409

cushmanwakefield.com