

MANHATTAN

28-90 REVIEW AVENUE, LONG ISLAND CITY

**QUEENS
MIDTOWN
TUNNEL**

**ED KOCH
QUEENSBORO
BRIDGE**

LONG ISLAND CITY

GREENPOINT

**LONG ISLAND
EXPRESSWAY**

SITE

LIC PREMIER PARKING MINUTES TO MANHATTAN!

**192,792 SQ. FT. SHORT TERM / LONG TERM PARKING • DIVISIONS AVAILABLE
OR BUILD-TO-SUIT FROM 50,000 SQ. FT. & UP**

28-90 Review Avenue, Queens

is prime parking located just **minutes from Manhattan** in Long Island City, via the Queens Midtown Tunnel or the Queensboro Bridge.

The property will be paved, fenced, and well-lit, and can be divided to accommodate multiple tenants.

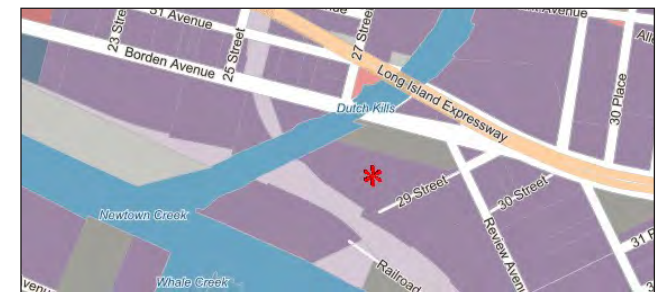
The site is ideal for short or long-term parking and the ownership is willing to build-to-suit 50,000 sq. ft. to 100,000 sq. ft., and can build a truck terminal.

LEASE PRICE: Upon Request



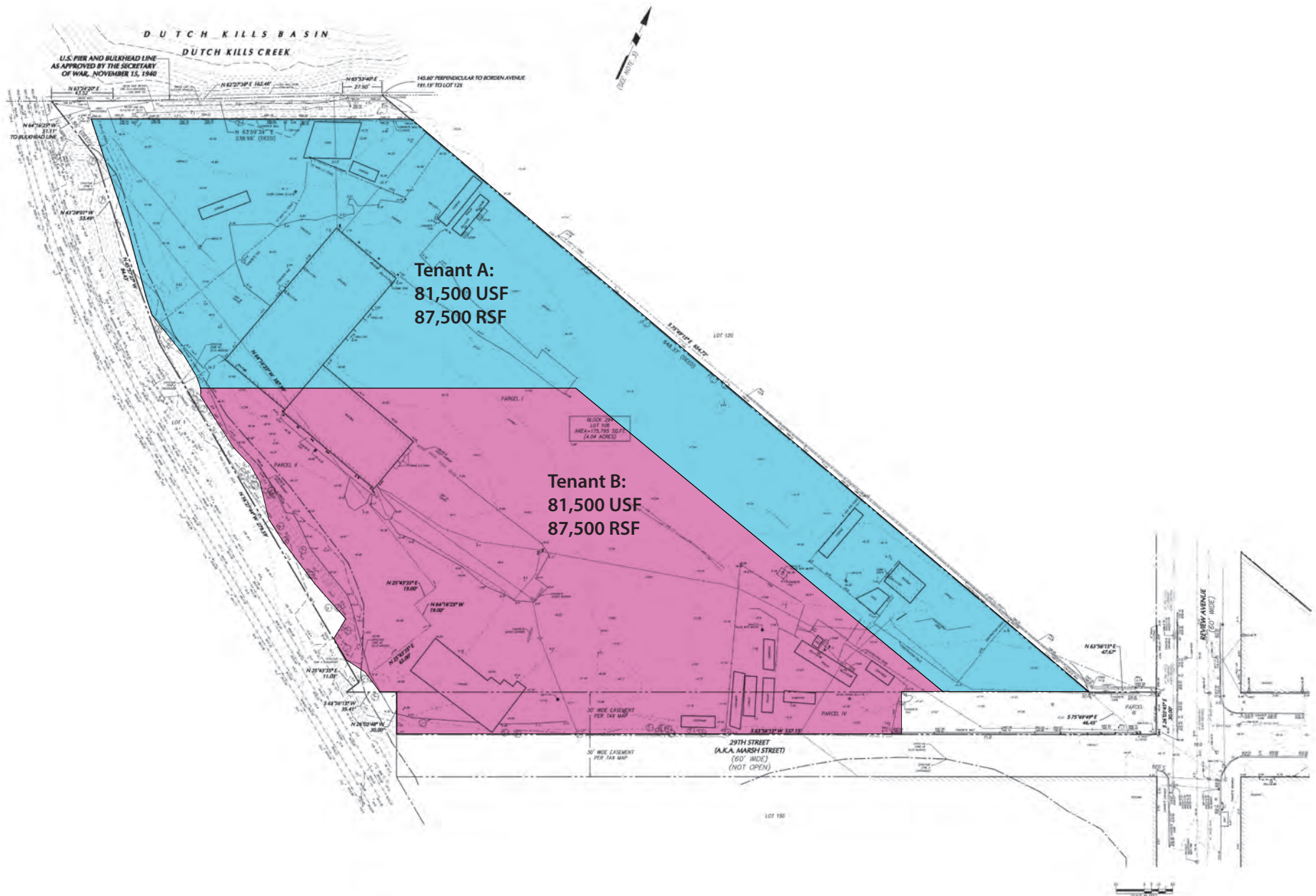
PROPERTY OVERVIEW

Block:	294
Lots:	106
Zoning:	M3-1
Neighborhood:	Long Island City
Lot Size:	192,792 Sq. Ft.

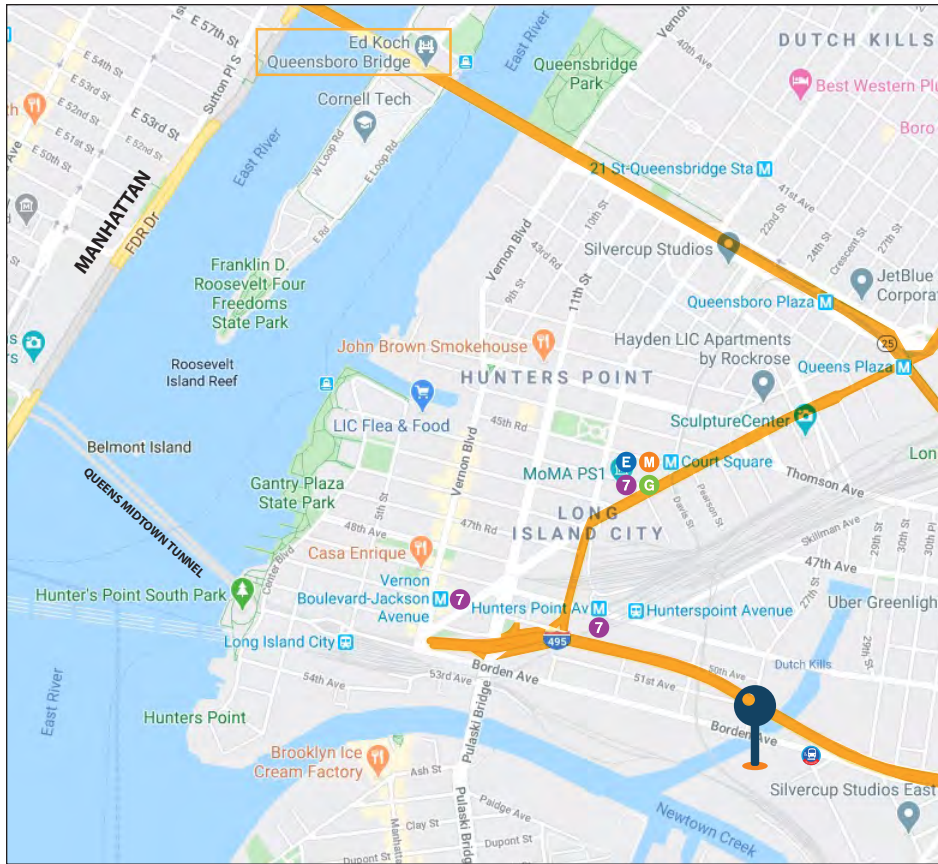


Located in an industrial building class corridor.




PROPERTY SURVEY & POSSIBLE DIVISIONS



All information is from sources deemed reliable and is submitted subject to errors, omission, changes of price or other conditions, prior sale, rent and withdrawal without notice.



TRANSPORTATION

-  **7** Hunters Point Avenue
-  **Q67** (Borden Ave / Review Ave)
-  Queens Midtown Tunnel
- Queensboro Bridge
- Long Island Expressway
- Brooklyn-Queens Expressway

For More Information About This Property Contact Exclusive Agent:



David Junik, Partner
 djunik@pinnaclereny.com
 718-371-6406



Nechama Liberow, Associate Broker
 nliberow@pinnaclereny.com
 718-778-6006