

27 Witherspoon Street, Princeton NJ



Retail Space Downtown Princeton

Sublease
2,200 SF



- Sublease Rate: \$63.64/SF plus utilities (modified gross)
- Lease expires: September 30, 2023
- Additional basement storage 253 SF
- Can be built out as a café
- Also suitable for other retail uses
- Walking distance to a variety of amenities and restaurants
- Located in the heart of Princeton
- Close to Routes 1, 206 and 27.

Contacts: Jerry Fennelly, Tom Barbera

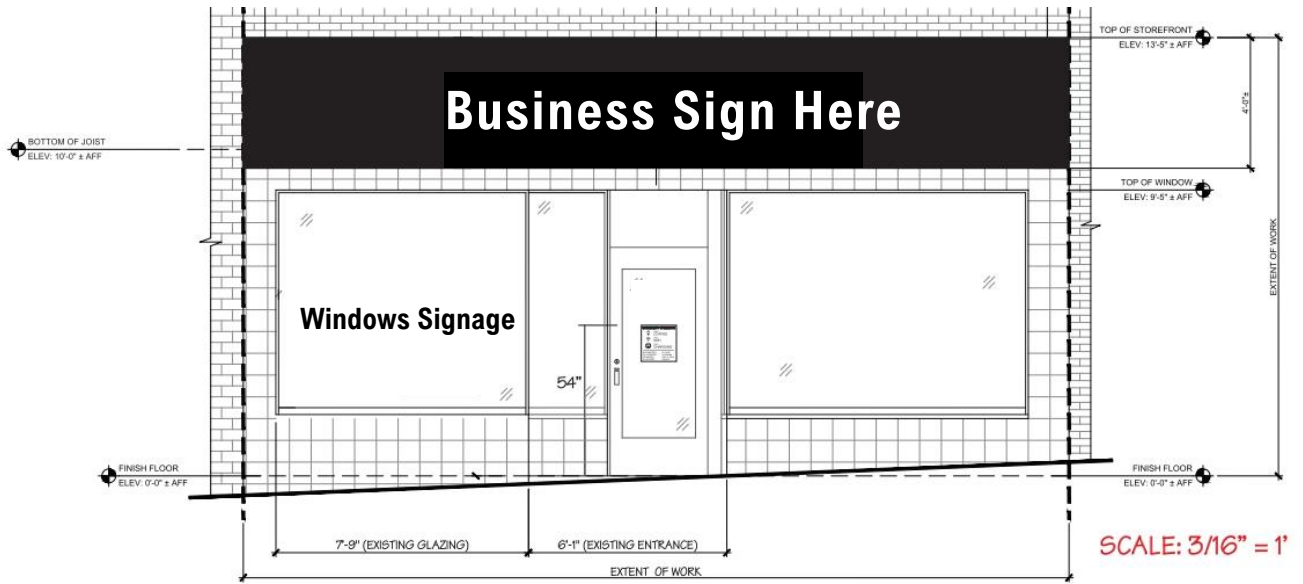
www.Fennelly.com | **609.520.0061** | Fennelly@Fennelly.com

NAIFennelly

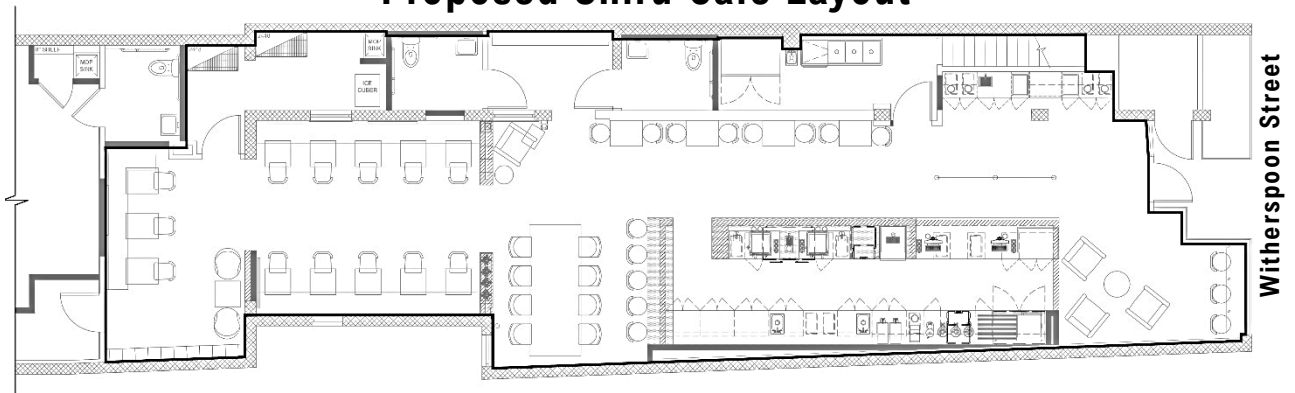
Commercial Real Estate Services, Worldwide.

The information contained herein has been given to us by the owner of the property or other sources we deem reliable. We have no reason to doubt its accuracy, but we do not guarantee it. All information should be verified prior to purchase or lease.

27 Witherspoon Street, Princeton NJ



Proposed Shiru Café Layout



Contacts: Jerry Fennelly, Tom Barbera

www.Fennelly.com | 609.520.0061 | Fennelly@Fennelly.com

NAIFennelly

Commercial Real Estate Services, Worldwide.