

WESTSIDE VILLAGE@ MOORES MILL

ADAPTIVE REUSE WAREHOUSE CONVERSION
UPPER WESTSIDE - MIDTOWN ATLANTA
COMING SPRING 2019

RETAIL
RESTAURANT
DISTRICT



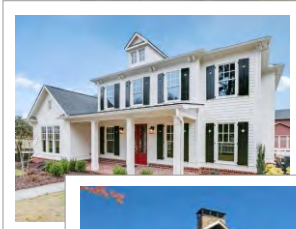
WESTSIDE VILLAGE
WALKABILITY

PUBLIX + 345 APARTMENTS



John Wieland
**JOHN WIELAND HOMES
AND NEIGHBORHOODS**

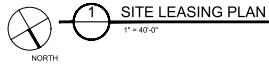
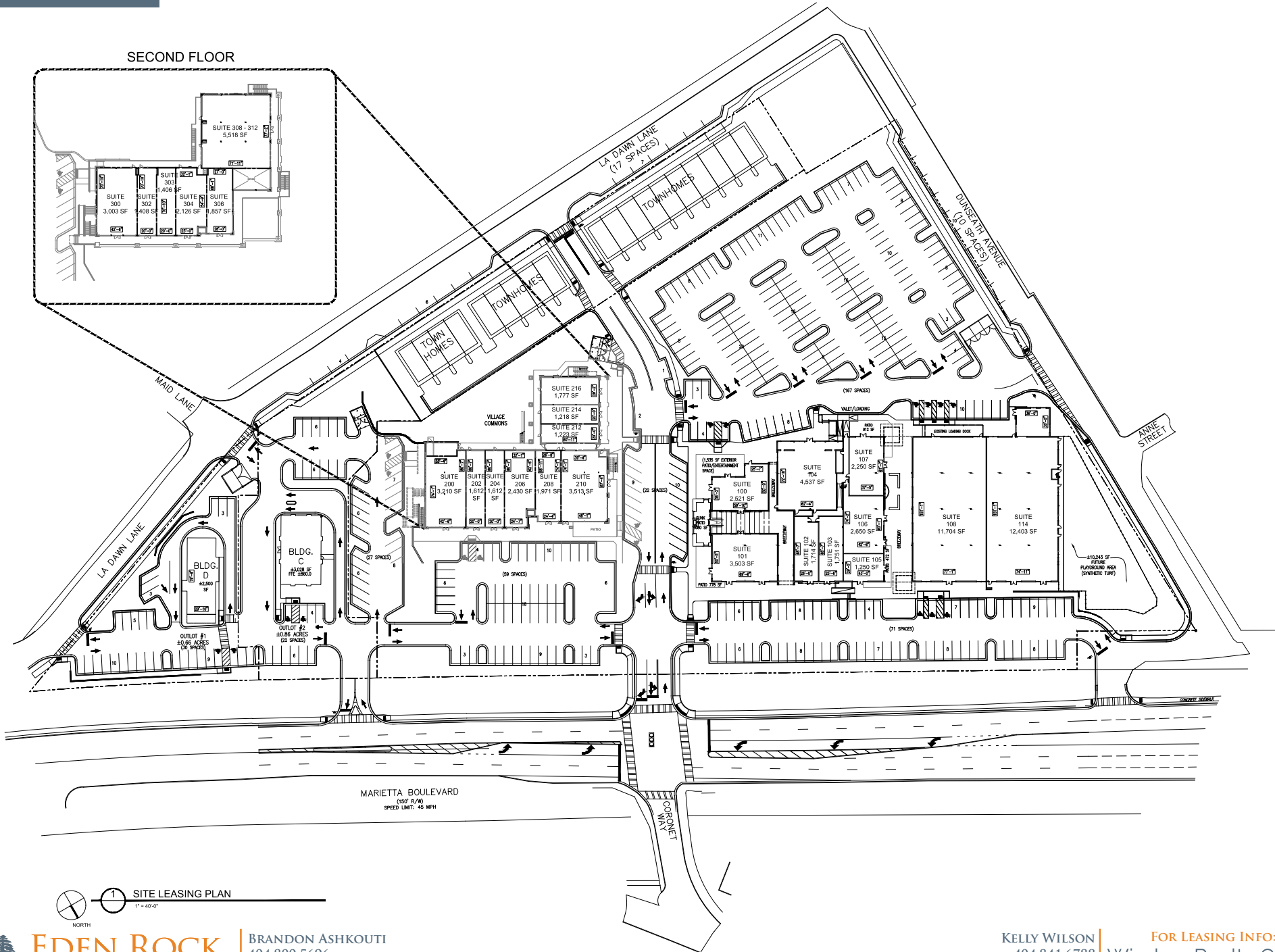
**220 Townhomes, 300 Apartments
& COMMERCIAL COMING 2016**



- WALKING PATHS
- CITY PATHS
- PROPOSED
- NEW & UNDER CONSTRUCTION
- RECENTLY RENOVATED

**WALKABLE FROM
1700+ NEW HOMES**

SECOND FLOOR





















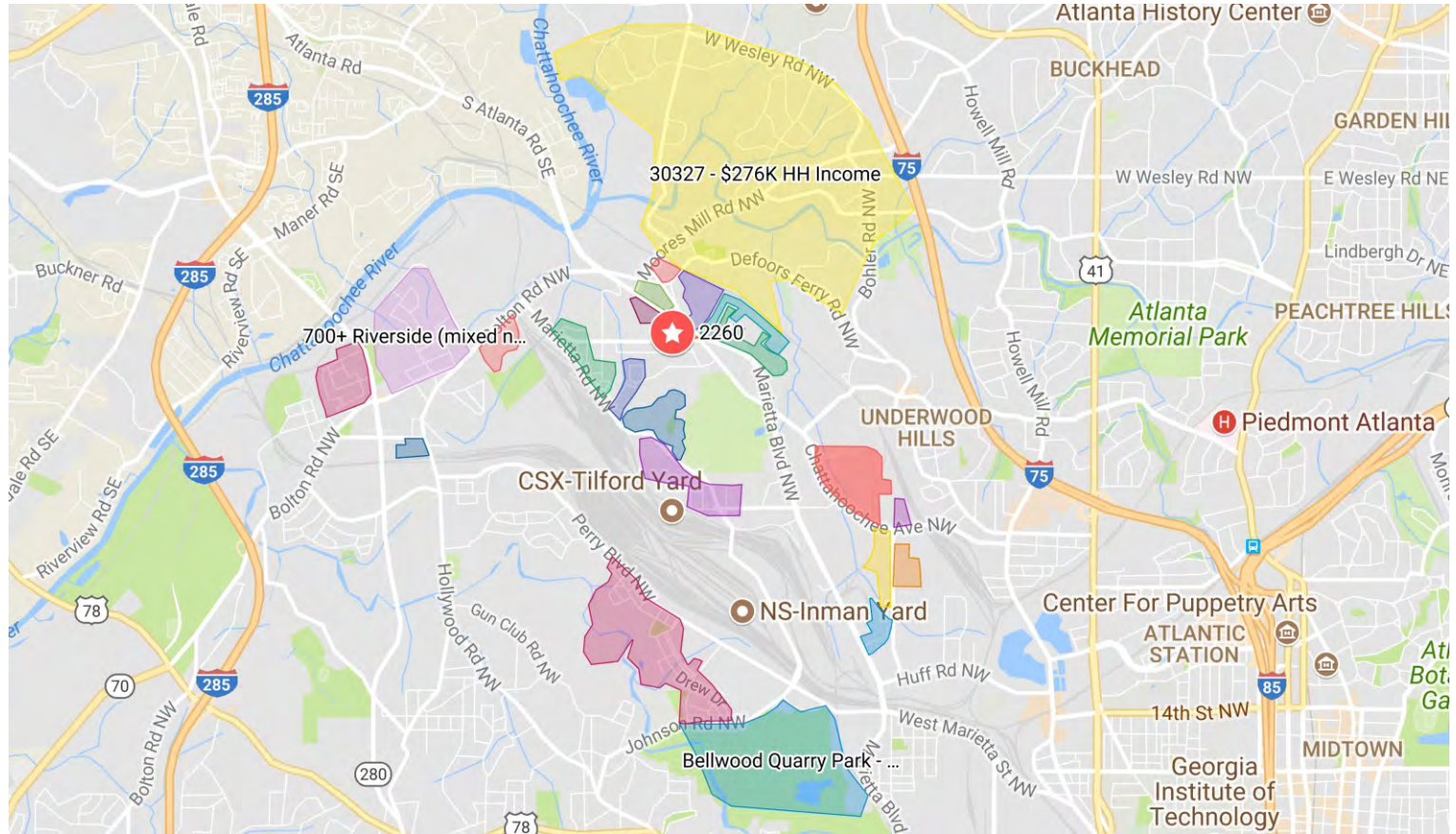


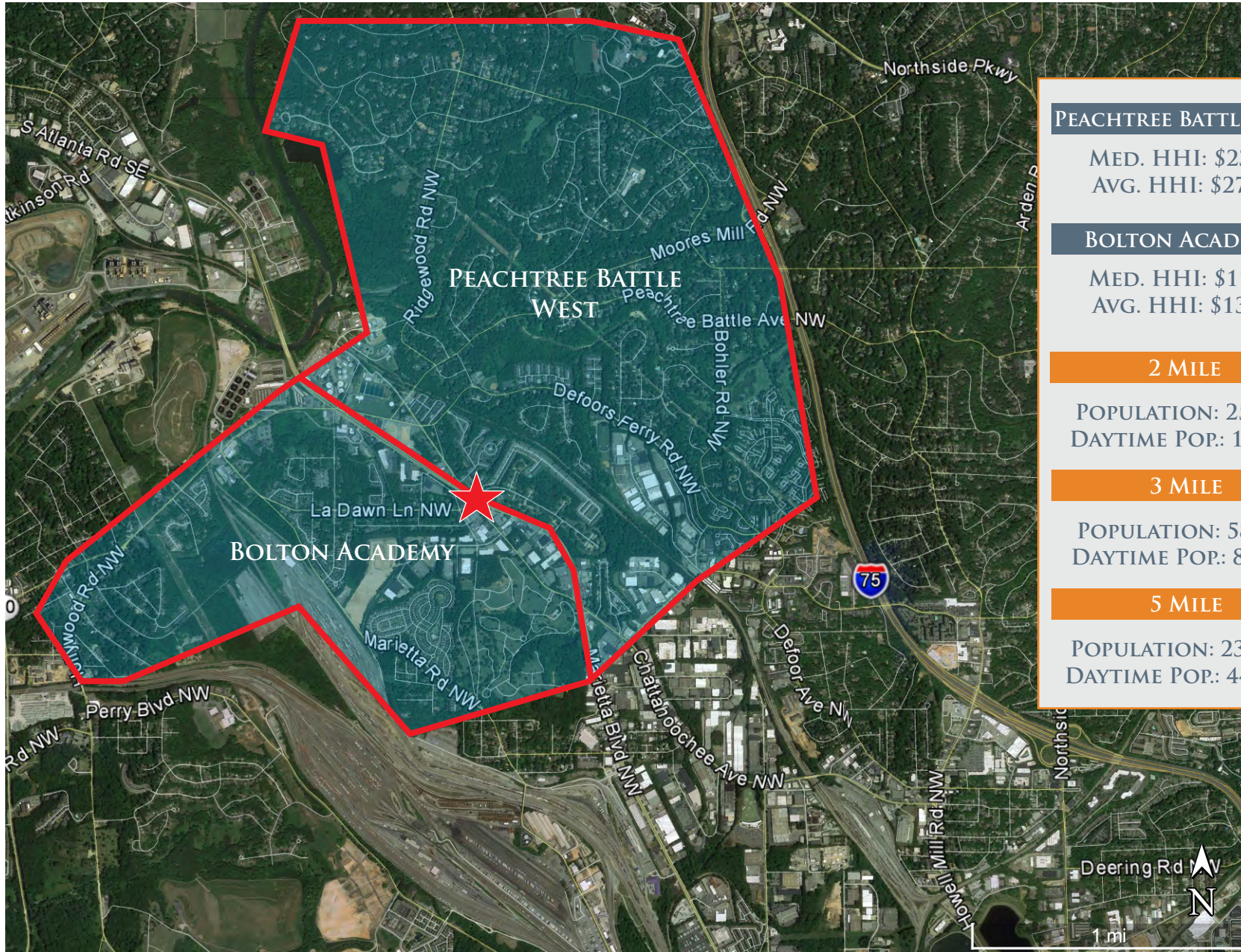


NEW DEVELOPMENTS

5000+ NEW HOMES SINCE 2005

- ★ Westside Village
- 🏠 180 Apts - Pending Development
- 🏠 PUBLIX + 345 APTS
- 🏠 450 Units - Recently Renovated
- 🏠 400 Townhomes - Liberty Park
- 🏠 230 TH & 300 APT
- 🏠 100% Flex Leased
- 🏠 176 Under Construction - Westside Station
- 🏠 350 New Homes - Dupont Commons
- 🏠 250+ New Homes - Adams Crossing
- 🏠 1400 Homes - West Highlands
- 🏠 300+ Homes - Vinings on Chattahoochee
- 🏠 200+ Apartments
- 🏠 700+ Riverside (mixed new and renovated)
- 🏠 80 New Homes
- 🏠 95 Homes and Townhomes - Parkview
- 🏠 Selig Enterprises - 80 Acres
- 🏠 Bellwood Quarry Park - Coming 2018
- 🏠 Top Golf, New Retail, Restaurants
- 🏠 Complex West Midtown - 105,000 SF Office
- 🏠 New Retail and Brewery
- 🏠 M West - 400 Townhomes
- 🏠 30327 - \$276K Household Incomes





| |
|---|
| PEACHTREE BATTLE WEST |
| MED. HHI: \$233K AVG. HHI: \$276K |
| BOLTON ACADEMY |
| MED. HHI: \$118K AVG. HHI: \$131K |
| 2 MILE |
| POPULATION: 25,700 DAYTIME POP: 14,500 |
| 3 MILE |
| POPULATION: 58,411 DAYTIME POP: 84,169 |
| 5 MILE |
| POPULATION: 239,547 DAYTIME POP: 440,510 |



An Urban Adaptive Reuse project, Westside Village @ Moores Mill will be a walkable, family-oriented, daily needs lifestyle center anchored by local/regional restaurants. Situated in the heart of Atlanta's Upper Westside between the Moores Mill Publix and John Weiland's new 230 town homes at The Quarter (Cannon Equities).

THE UPPER WESTSIDE IS NOW A BEACON FOR URBAN ATLANTA WITH ONE OF THE HIGHEST CONCENTRATIONS OF UPPER INCOME PRODUCING YOUNG ADULTS WITH NEARLY 5000 NEW HOMES CONSTRUCTED SINCE 2018; DUE TO ITS HIGHWAY ACCESS, PROXIMITY TO WEST MIDTOWN AND NEW HOUSING STOCK DEVELOPED PRIMARILY BY BROCK BUILT HOMES.

The Upper Westside boasts an influx of investment in the realm of \$350,000,000 over the next 18 months. New developments for the newly named Upper Westside include a \$95,000,000 Publix project. Cannon Equities and John Weiland townhomes, nearly 1700 new homes within ½ mile of Westside Village.

WESTSIDE VILLAGE @ MOORES MILL
“THE NEWEST DESTINATION LIFESTYLE CENTER
FOR ATLANTA’S YOUNG AND ACTIVE UPPER WESTSIDE FAMILIES.”

Westside Village @ Moores Mill is a new development focused on making life easier for the busy city-dwelling family looking for convenience in one destination. An urbanites ideal lifestyle center designed with family, wellness and proximity in mind. Providing fine amenities like Fitness, Yoga, Juice Bar, Coffee/Café, Salon, Medical/Dental, Daycare/Early Learning Academy, Co-working space, Family-friendly Chef-driven Restaurants, and specialty grocery.

Westside Village @ Moores Mill is at the epicenter of the newest major rapidly growing hub in Atlanta. The highly desirable location is a focal point destination where today's active, health minded, upper income young adults and young families thrive Atlanta Ballet, Buckhead Gymnastics, Galloway, Pace and Westminster all call the Upper Westside home confirming the area as a mecca for arts and youth athletics

TRANSPORTATION

The City of Atlanta shows a strong commitment to improving infrastructure to accommodate increasing traffic and the imminently burgeoning retail district. Their recent investments include the Moores Mill Extension across Marietta Boulevard and new roadway from the over 800 Brock Built homes just south of our project – connecting the neighborhood directly into the retail core at Marietta Blvd, Moores Mill and Coronet Way. Additionally, the PATH Foundation has invested in significant improvements in the immediate area – connecting the neighborhoods directly into the commercial corridors, including the recently announced Silver Comet-to-Beltline connection.

Located only minutes from I-285, and I-75/85

