

# Shoppes at Deer Creek

4300 Chapel Hill Road, Douglasville, GA 30135

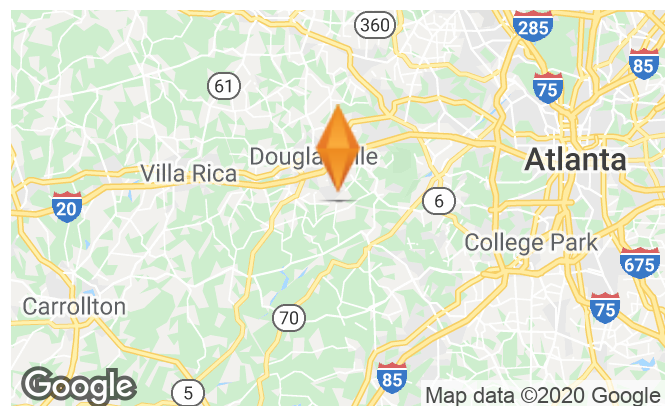
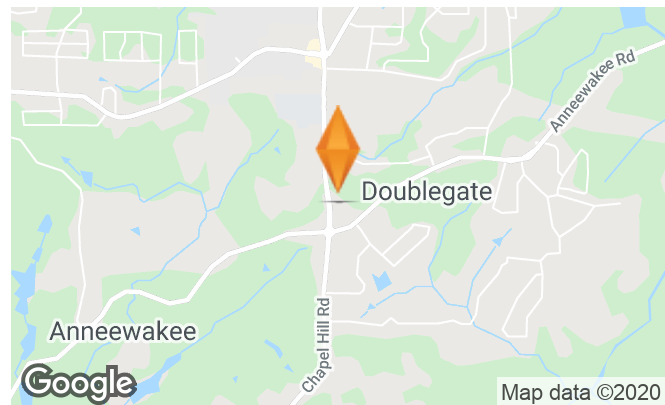
FOR LEASE



## 1,400 - 4,200 SF AVAILABLE

### PROPERTY HIGHLIGHTS

- Strong performing Publix-anchored shopping center on Chapel Hill Road
- Plenty of parking and multiple, convenient access points to the shopping center
- Douglasville is one of Atlanta's fastest growing suburbs, only 25 miles west of downtown Atlanta
- Easy access to I-20 with I-285 directly accessed from I-20



DEMOGRAPHICS	1 MILE	3 MILES	5 MILES
Total Households	889	8,555	23,791
Total Population	2,842	25,689	68,096
Average HH Income	\$80,902	\$86,396	\$74,516

For More Information, Contact  
**CHRIS BOWMAN** | 404.812.8928 | [cbowman@skylineseven.com](mailto:cbowman@skylineseven.com)

800 MT. VERNON HIGHWAY NE | SUITE #425 | 404.812.8928 | [SKYLINESEVEN.COM](http://SKYLINESEVEN.COM)



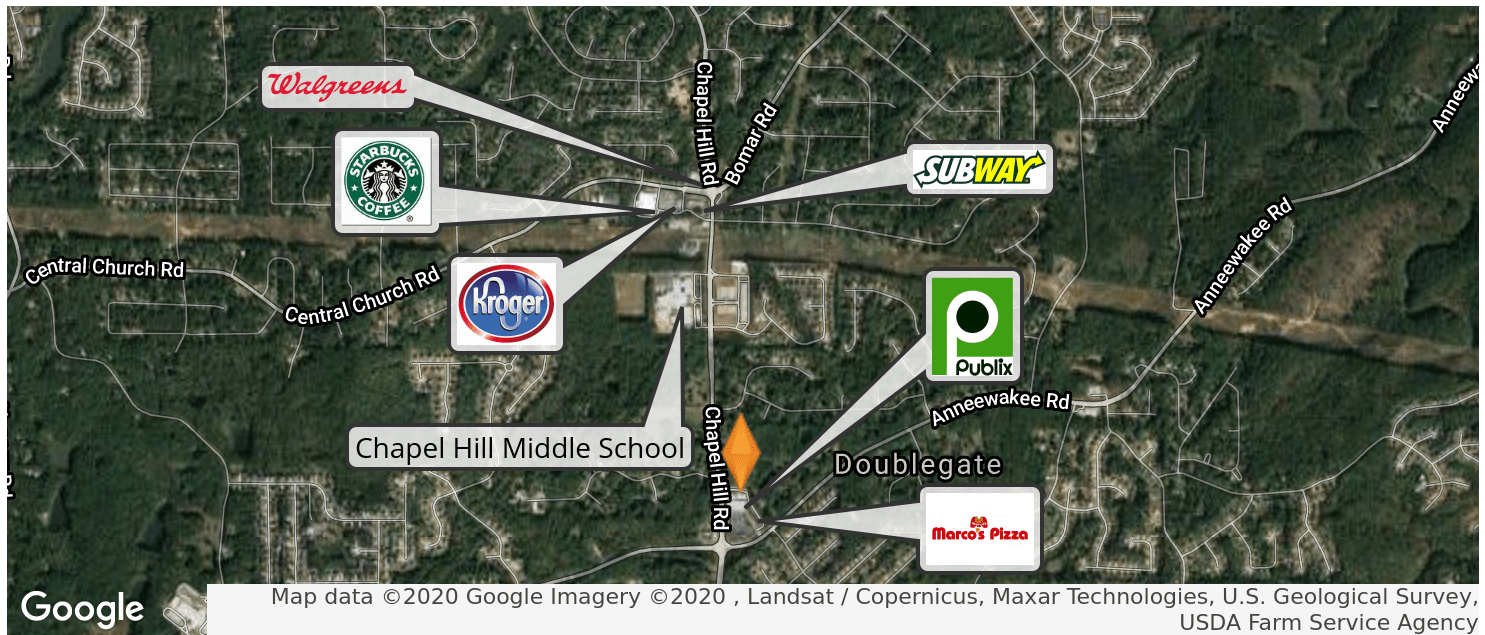
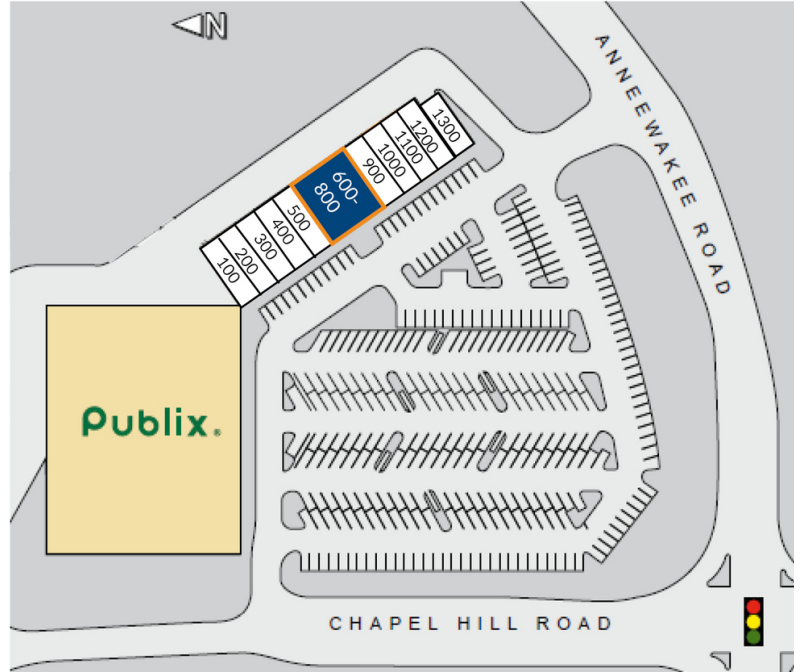
# Shoppes at Deer Creek

4300 Chapel Hill Road, Douglasville, GA 30135

FOR LEASE

SUITE	TENANT	UNIT SIZE (SF)
1001	Publix	45,600
100	The Chop Shop	1,489
200	Signature Nails	1,370
300	Wings & Chinese	1,458
400	Prestige Cuts	1,468
500	Magnificent Smoothies	1,468
<b>600-800*</b>	<b>AVAILABLE</b>	<b>4,200</b>
900	Marco's Pizza	1,468
1000	Let's Talk Therapy	1,469
1100	Brazilian Wax	1,469
1200	Custom Fitness	1,470
1300	Magic Touch Cleaners	1,531

\*can be subdivided



For More Information, Contact

**CHRIS BOWMAN** | 404.812.8928 | cbowman@skylineseven.com

800 MT. VERNON HIGHWAY NE | SUITE # 425 | 404.812.8928 | SKYLINESEVEN.COM

