

FOR  
LEASE

# WATERFRONT OFFICE SPACE

1151 FAIRVIEW AVE N | SEATTLE, WA 98109

Colliers  
INTERNATIONAL



## FEATURES & AMENITIES

High-End Finishes / Outdoor Patio  
Stunning Views of South Lake Union



- Building: 17,702 RSF
- Parking: 3+ stalls/1,000 RSF
- Available **July 1, 2018**



Dan Dahl  
206 382 8543  
Seattle, WA  
[dan.dahl@colliers.com](mailto:dan.dahl@colliers.com)

David Gurry  
206 382 8549  
Seattle, WA  
[david.gurry@colliers.com](mailto:david.gurry@colliers.com)

Colliers International  
601 Union St STE 5300  
Seattle, WA 98102  
[www.colliers.com/seattle](http://www.colliers.com/seattle)



**FOR  
LEASE**

# WATERFRONT OFFICE SPACE

1151 FAIRVIEW AVE N | SEATTLE, WA 98109

**Colliers**  
INTERNATIONAL



South Lake Union Park

- Situated lakefront in South Lake Union near Capitol Hill, within walking distance of shopping, restaurants, and an exciting diversity of cultural venues.
- Easy access to many transit options, with just a 5 minute walk to the nearest SLU Streetcar stop.
- Front door access to the Lake Union Loop, a 6 mile urban trail that circles the lake and connects numerous neighborhoods and parks.
- One half mile away from Lake Union Park and MOHAI's historic landmark location.

**17,702 RSF**

1<sup>st</sup> floor: 6,831 SF

2<sup>nd</sup> floor: 10,871 SF

**Construction:** Steel frame and concrete block

**Roof:** Flat roof with waterproof membrane

**Exterior:** Concrete masonry, steel framing, and sheet metal

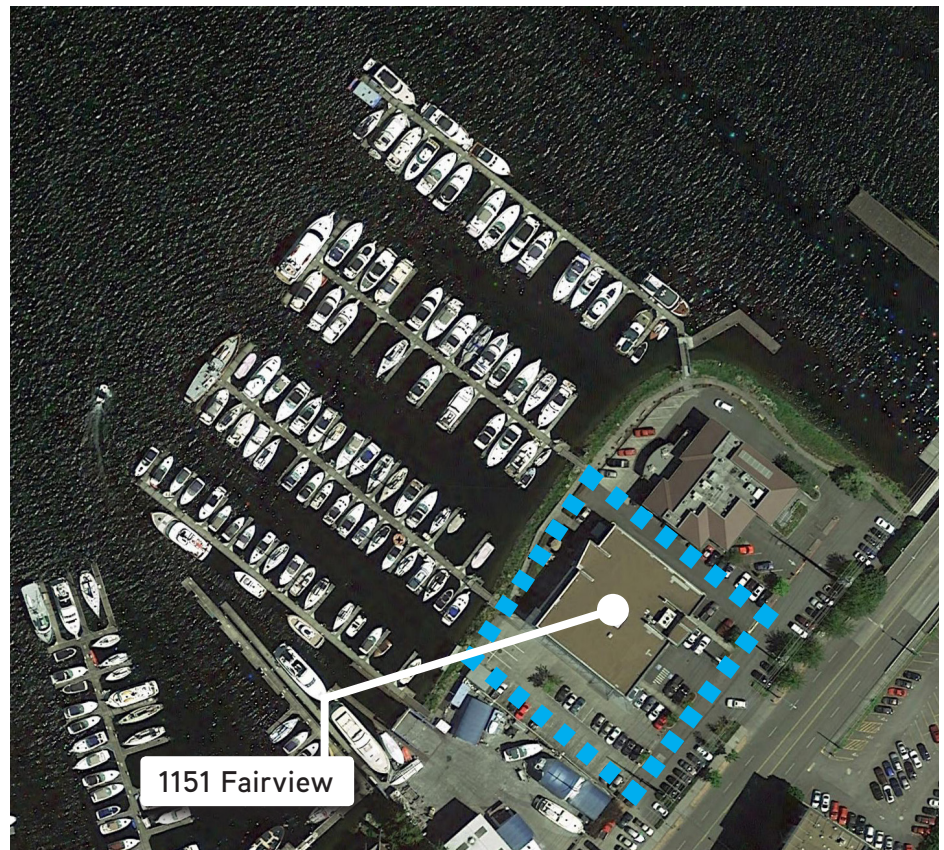
**HVAC:** Units mounted on ceiling

**Elevators** One

**Life Safety:** Sprinklers

**Zoning:** C2-40  
Water use restrictions may apply.

**Parking:** 58 stalls



1151 Fairview