

~ **FOR LEASE** ~

RETAIL, MEDICAL or OFFICE SPACE



**67 Federal Road, Unit 102
Brookfield, CT**

**Lease Price: \$20.00 NNN
NNN = +/- \$5.75**

Ideal retail, medical or office location with amazing exposure in the heart of Federal Road. Be neighbors with BJ's, Kohl's, Raymour & Flanigan, Bed Bath and Beyond, CVS, Michaels, Costco, Starbucks, and other major retailers. Easy access to Super 7 and I-84 Exit 7 on/off ramps.

| | |
|----------------|--|
| Size: | +/- 1,284Sq. Ft. |
| Layout: | Recreation area, open bull pen, 3 private offices, and kitchenette |
| Year Built: | 1989 |
| Zone: | C-1 (Commercial) |
| Traffic Count: | +/- 31,744 Vehicles (2019) |
| Parking: | +/- 150 Spaces |
| Heating: | Propane Heat |



Mick Consalvo
203.241-5188
mconsalvo@towercorp.com



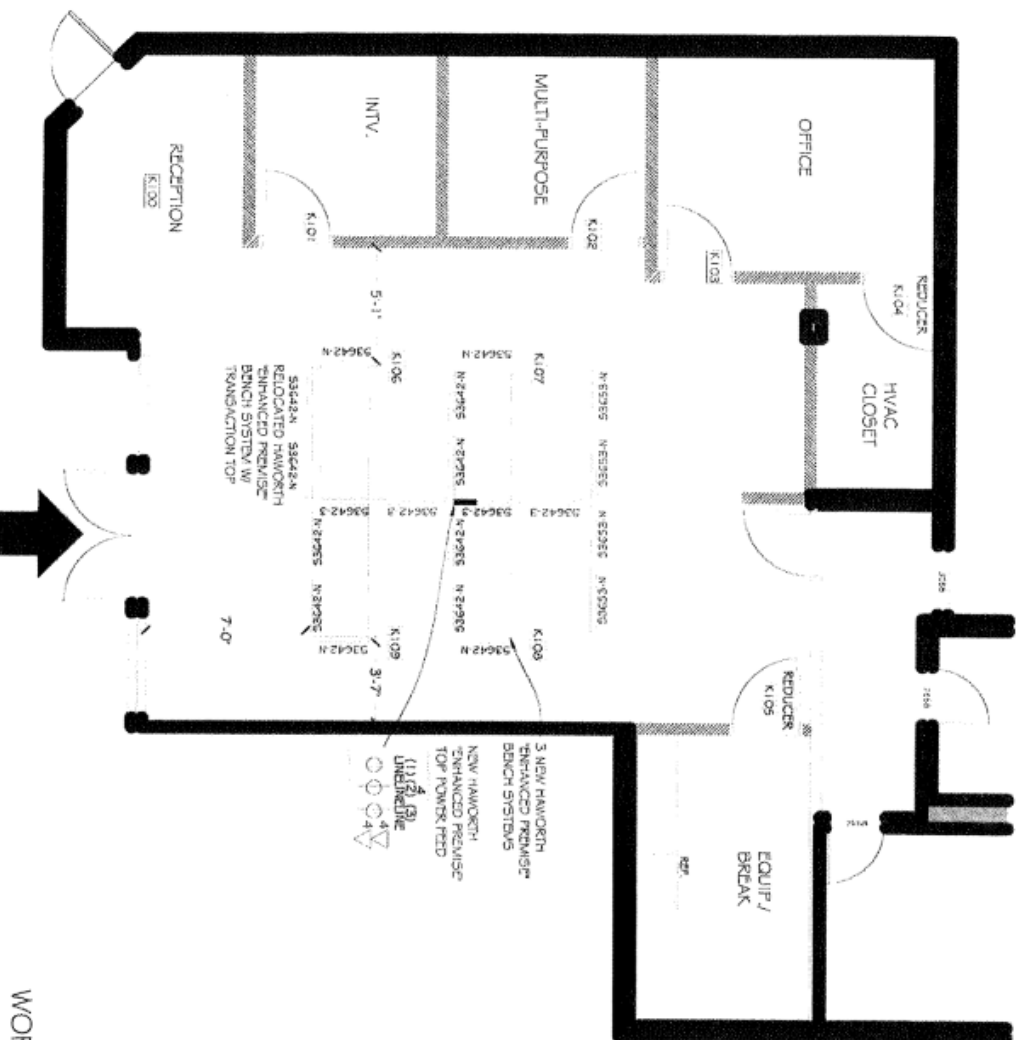
Michael Dimyan
203.948-2891
mdimyan@towercorp.com

Tower Realty Corp. / 246 Federal Rd., Suite D26, Brookfield, CT 06804 / www.towercorp.com
203-775-5000 Office / 203-546-7793 Fax

No warranty of representation, expressed or implied is made as to the accuracy of the information contained herein, and same is submitted subject to errors, omissions, change of price, rental, sale or other conditions, withdrawal without notice, and to any special listing conditions imposed by our principals.

FURNITURE
 NEW & EXISTING HAWORTH "ENHANCED PREMISE" PRODUCT
 FABRIC: PL-04M (WATER)
 TRIMWORK/SURFACE: TR-00R (BEIGE)

BRANCH
 ENTRANCE



WORKSTATION PLAN
 BR. 1727 DANBURY
 FIRST FLOOR RETAIL SPACE
 67 FEDERAL RD
 BROOKFIELD, CT 06804
 USF 1136, R3F 1284
 PROJECT MANAGER FOR THIS PROJECT:
 DOUGLAS J. FLETCHER, AIA/USF
 TEL: 203.244.5544
 FAX: 203.244.5544



~ LOCATION MAP ~

67 FEDERAL ROAD
BROOKFIELD, CT



Mick Consalvo
203.241-5188
mconsalvo@towercorp.com



Michael Dimyan
203.948-2891
mdimyan@towercorp.com

Tower Realty Corp. / 246 Federal Rd., Suite D26, Brookfield, CT 06804 / www.towercorp.com
203-775-5000 Office / 203-546-7793 Fax