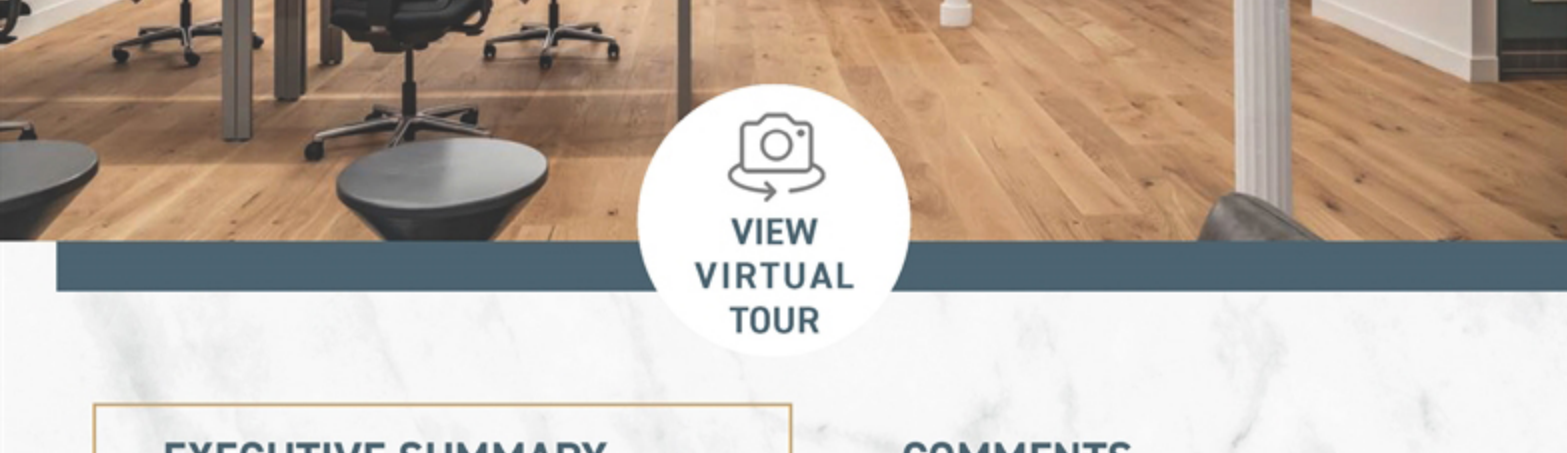


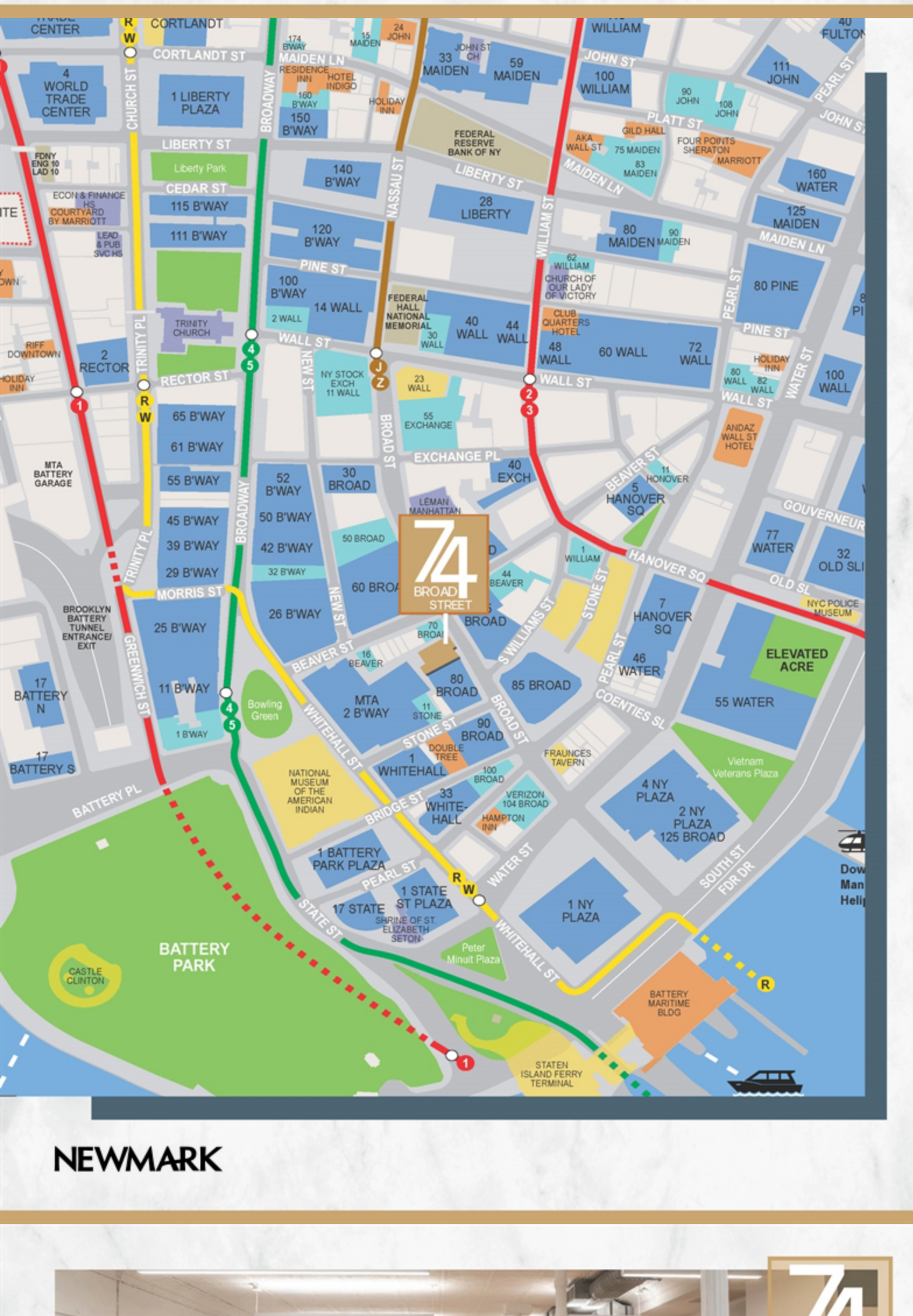
NEWMARK



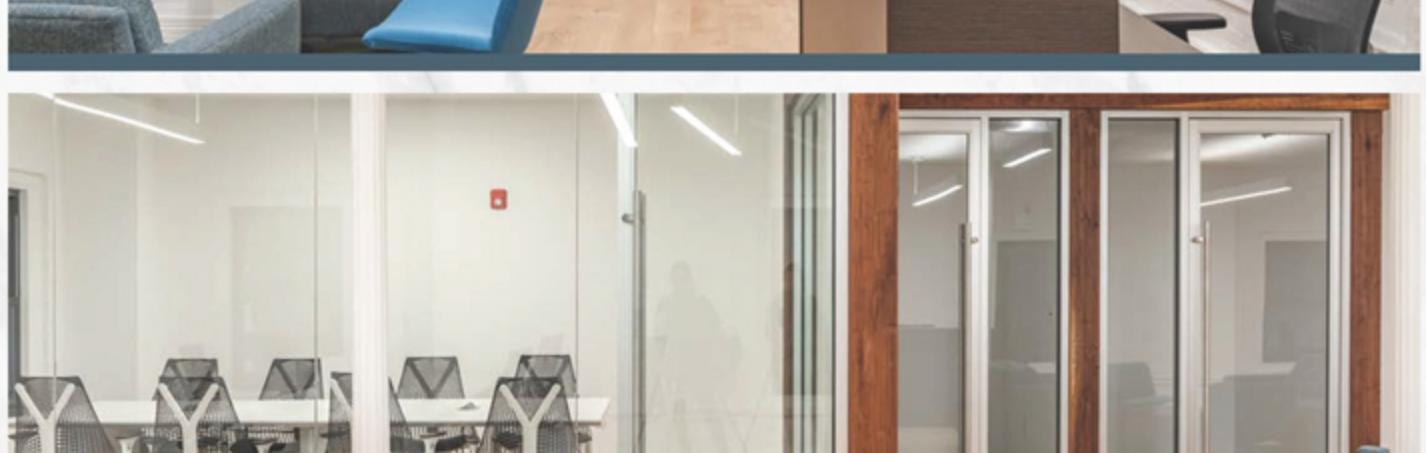
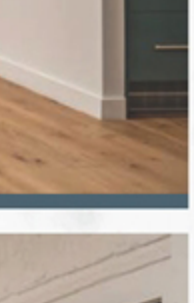
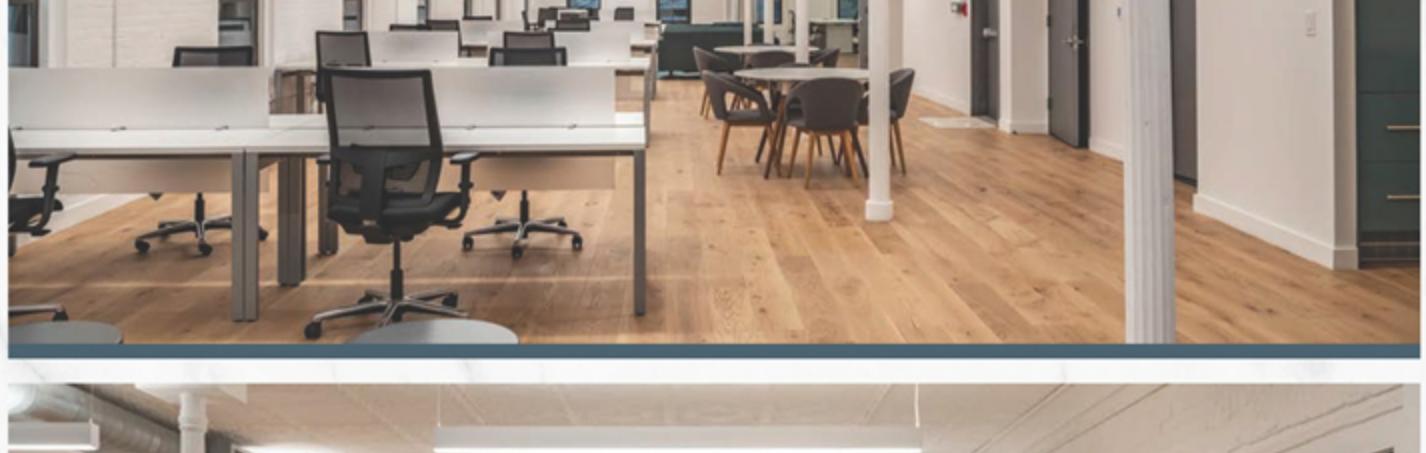
VIEW VIRTUAL TOUR

| EXECUTIVE SUMMARY | COMMENTS |
|---|--|
| FLOORS/AREA Entire 2nd floor - 4,543 RSF Entire 3rd floor - 4,677 RSF Entire 4th floor - 4,677 RSF (pre-built) Entire 5th floor - 4,677 RSF (pre-built) Entire 6th floor - 4,677 RSF - Leased | <ul style="list-style-type: none"> Brand new fully furnished pre-builts with hardwood floors Full floor presence Rooftop terrace for ALL tenants Newly renovated lobby New elevator New windows Tenant controlled HVAC WiredScore Certified Close to subway lines |
| POSSESSION Immediate | |
| TERM Flexible | |

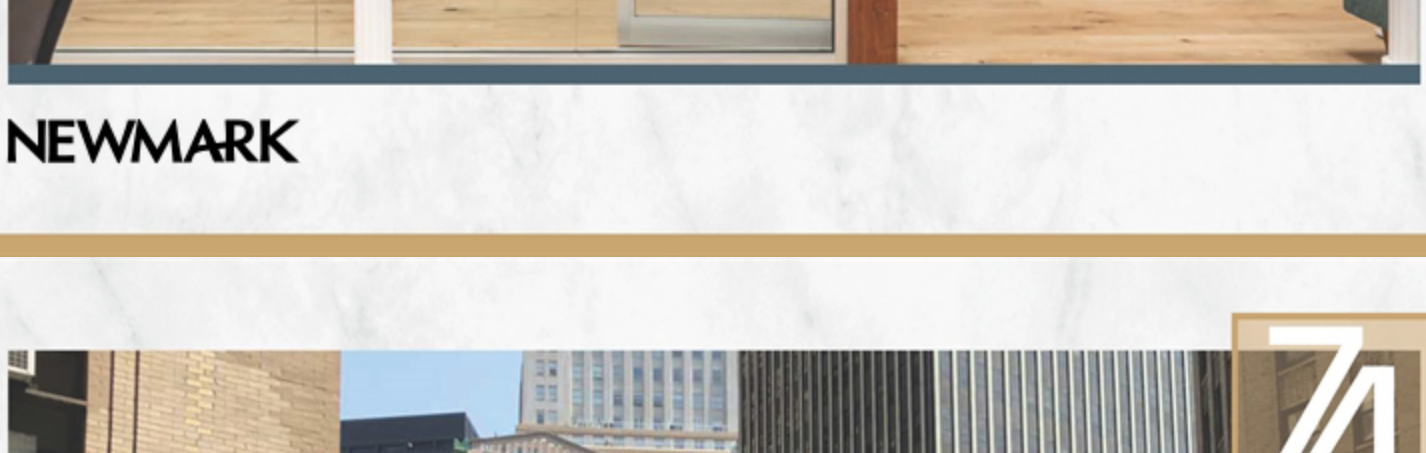
NEWMARK



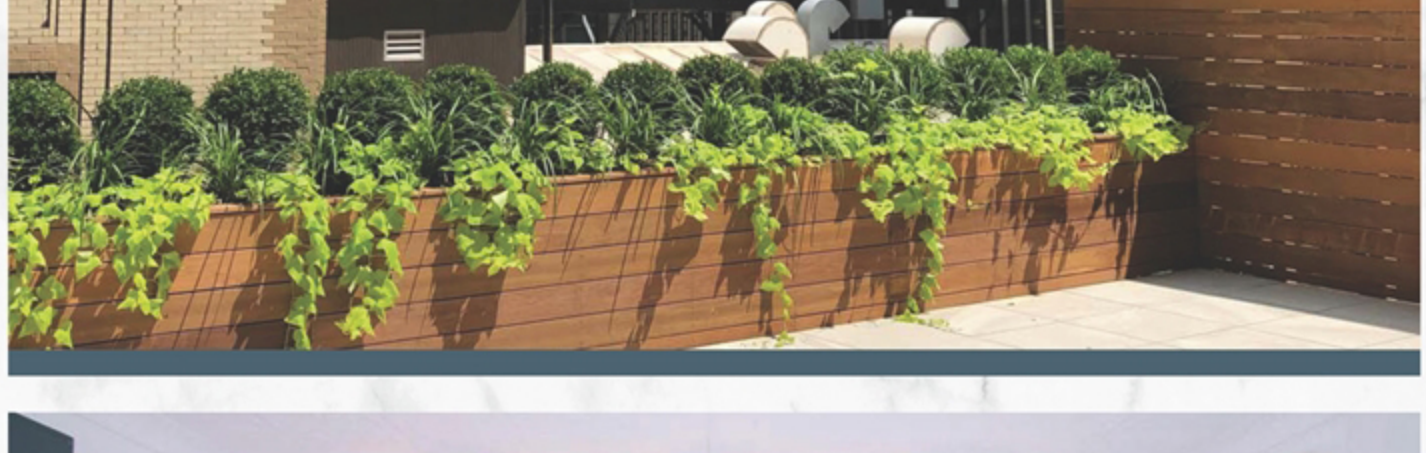
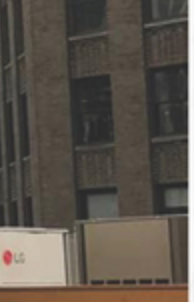
NEWMARK



NEWMARK



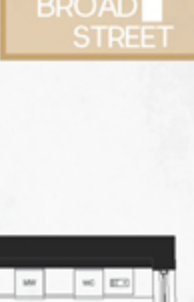
NEWMARK



NEWMARK



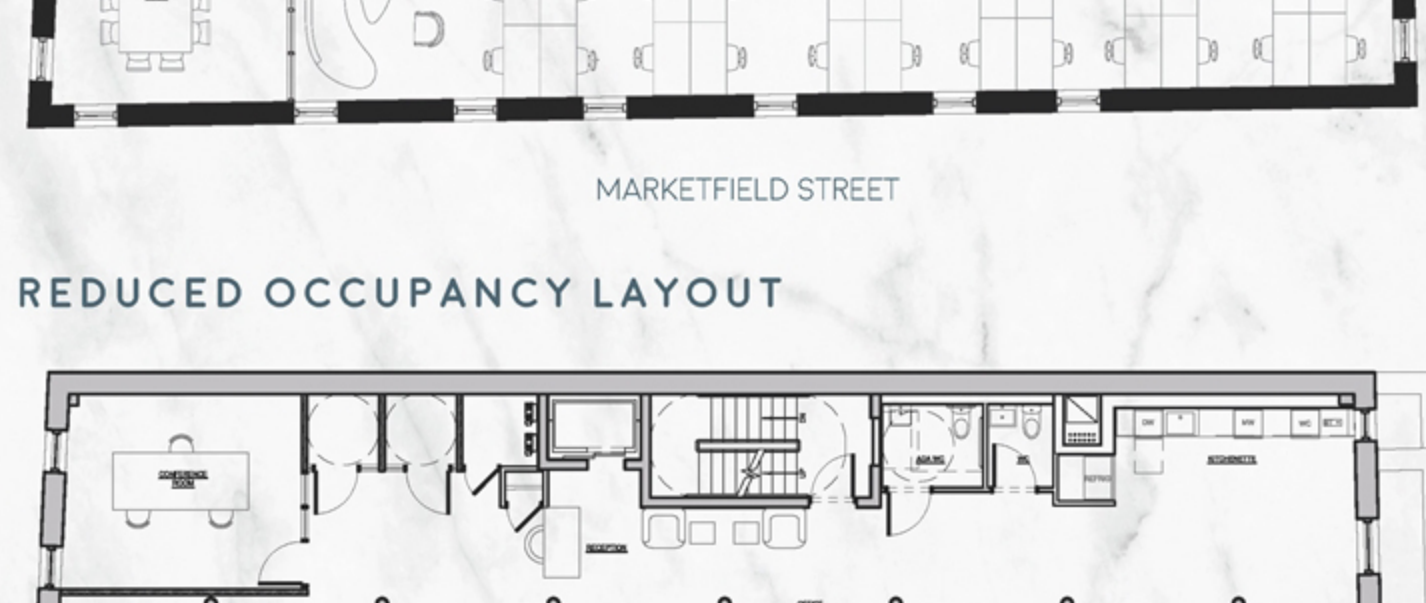
NEWMARK



FLOOR PLAN

4,677 RSF

HIGH DENSITY LAYOUT



REDUCED OCCUPANCY LAYOUT



NEWMARK



Contact for more information:

DANIEL APPEL DANIEL LEVINE
 daniel.appel@nrmk.com daniel.levine@nrmk.com
 212-359-1901 212-359-2319

NEWMARK

The information contained herein has been obtained from sources deemed reliable but has not been verified and no guarantee, warranty or representation, either express or implied, is made with respect to such information. Terms of sale or lease and availability are subject to change or withdrawal without notice.

[DOWNLOAD BROCHURE](#)