

# 1300 FAIRMOUNT AVENUE

PHILADELPHIA, PA

±1,500 SF – 12,868 SF AVAILABLE FOR LEASE

JOIN



## property highlights.

- ±2.6 acre multi-parcel development will include ±63,594 SF of retail, 486 residential units & 151 dedicated retail parking spaces
- Easy access to the Fairmount neighborhood, Temple University and the Market Street retail and office corridors
- Retail will include multi-dimensional box retail & multi-level specialty retail
- Direct access to the Broad Street subway line and multiple bus routes
- Two dedicated full size (WB67) loading decks
- Just signed:



## stats.

2018 DEMOGRAPHICS*	.5 MILES	1 MILE	1.5 MILES
EST. POPULATION	15,008	61,096	150,003
EST. HOUSEHOLDS	6,468	26,548	71,839
EST. AVG. HH INCOME	\$67,181	\$87,618	\$94,747



**METRO**<sup>®</sup>  
COMMERCIAL  
REAL ESTATE, INC.

MetroCommercial.com | PHILADELPHIA, PA | PLYMOUTH MEETING, PA | MOUNT LAUREL, NJ | NAPLES, FL

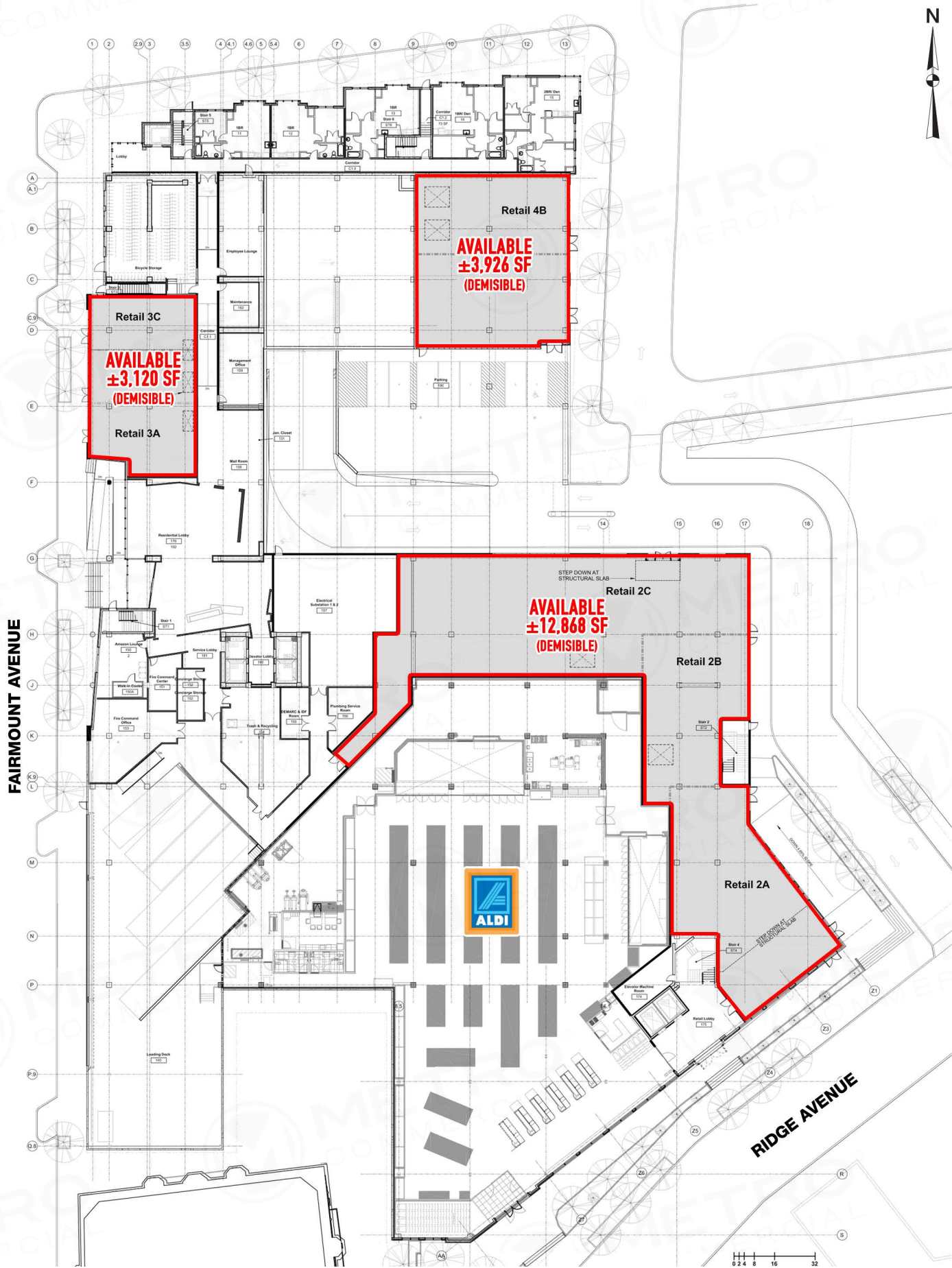
## get in touch.

**PHILLIP AZARIK**

office 610.825.5222  
direct 610.260.2678  
pazarik@metrocommercial.com

**SCOTT BENSON**

office 215.893.0300  
direct 215.282.0158  
sbenson@metrocommercial.com



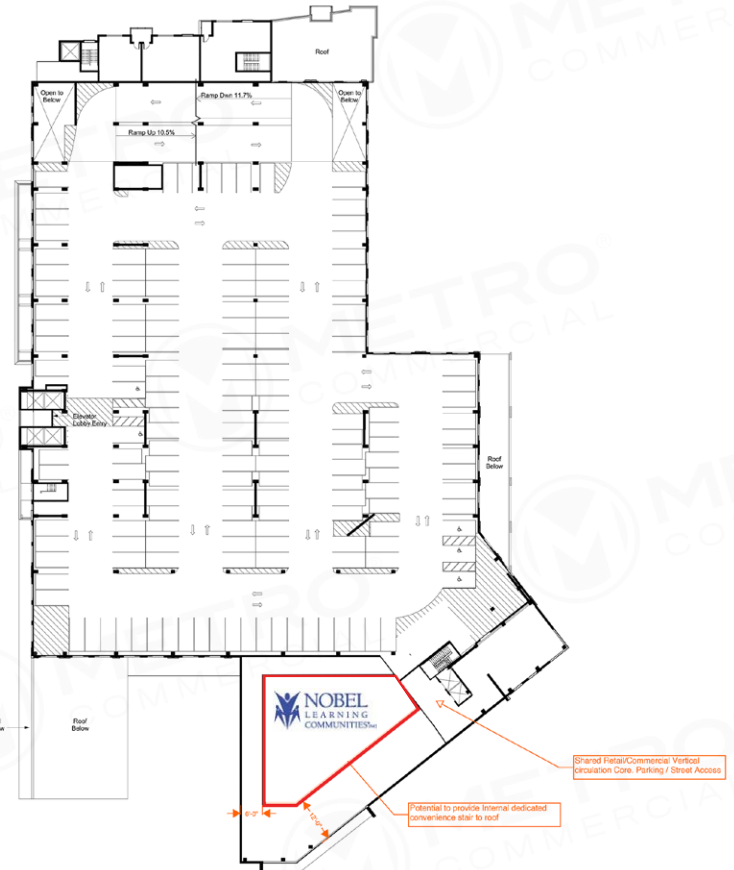
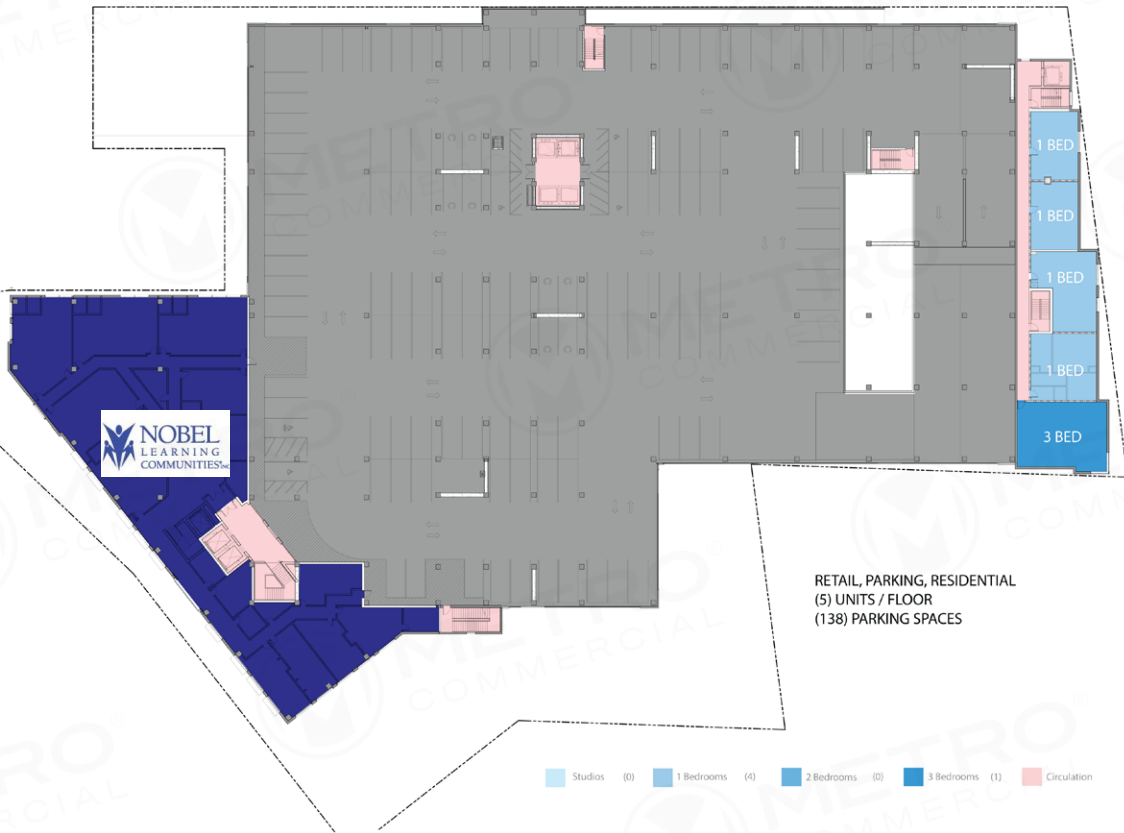
The information and images contained herein are from sources deemed reliable. However, Metro Commercial Real Estate, Inc. makes no representation whatsoever as to their accuracy or authenticity. Images shown may be modified for illustrative purposes. Images may be out-of-date and not current. 7.2.19

# 1300 FAIRMOUNT AVENUE - PROPOSED FIRST LEVEL PLAN PHILADELPHIA, PA



## SECOND FLOOR

## THIRD FLOOR (ROOF)



The information and images contained herein are from sources deemed reliable. However, Metro Commercial Real Estate, Inc. makes no representation whatsoever as to their accuracy or authenticity. Images shown may be modified for illustrative purposes. Images may be out-of-date and not current. 7.2.19

VIEW FACING NORTH



1300 FAIRMOUNT AVENUE  
PHILADELPHIA, PA



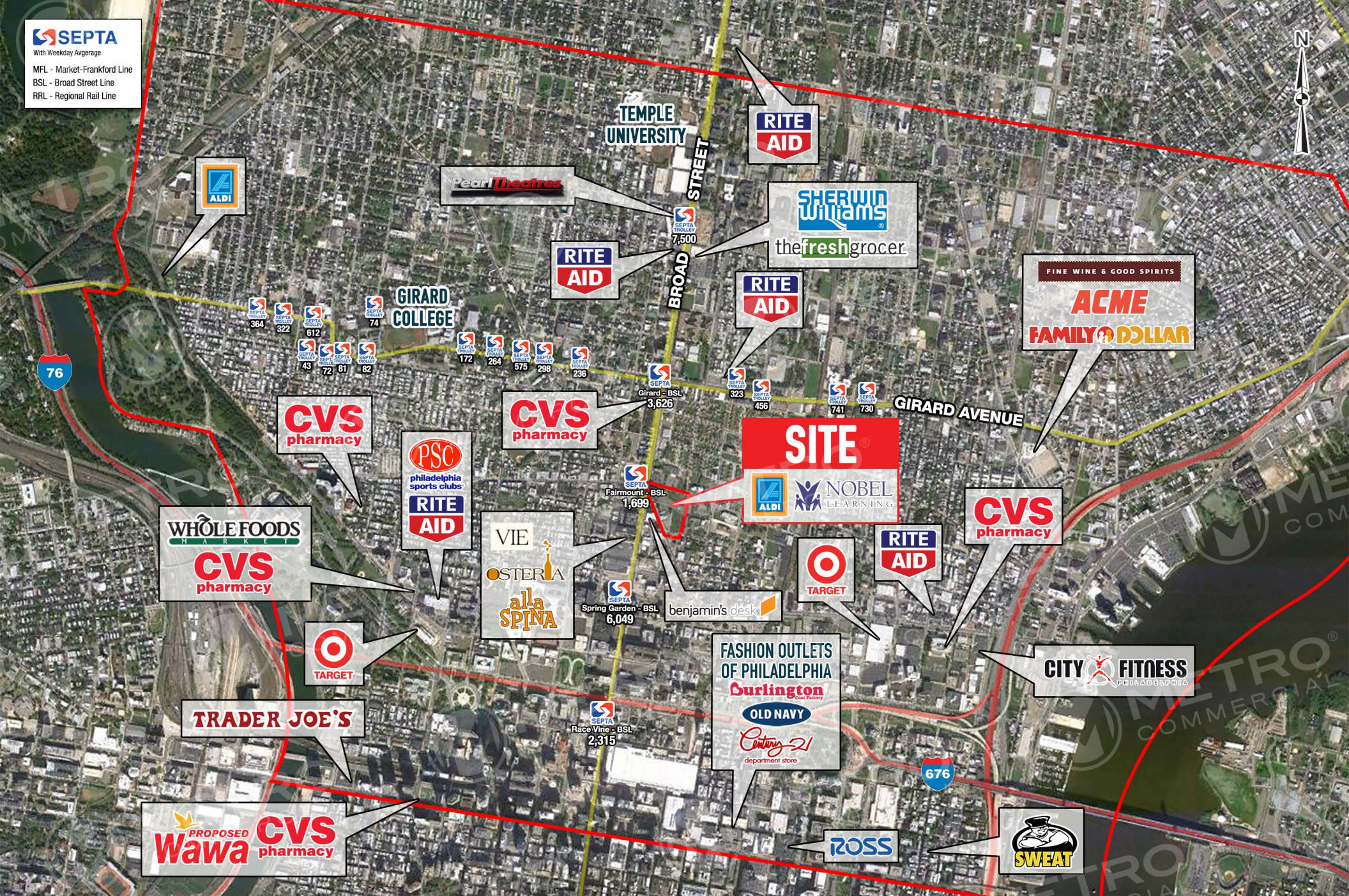
The information and images contained herein are from sources deemed reliable. However, Metro Commercial Real Estate, Inc. makes no representation whatsoever as to their accuracy or authenticity. Images shown may be modified for illustrative purposes. Images may be out-of-date and not current. 7.2.19



The information and images contained herein are from sources deemed reliable. However, Metro Commercial Real Estate, Inc. makes no representation whatsoever as to their accuracy or authenticity. Images shown may be modified for illustrative purposes. Images may be out-of-date and not current. 7.2.19

**1300 FAIRMOUNT AVENUE**





**1300 FAIRMOUNT AVENUE  
PHILADELPHIA, PA**

The information and images contained herein are from sources deemed reliable. However, Metro Commercial Real Estate, Inc. makes no representation whatsoever as to their accuracy or authenticity. Images shown may be modified for illustrative purposes. Images may be out-of-date and not current. 7.2.19

**TEMPLE UNIVERSITY**

Main Campus Student Enrollment: 31,871  
Faculty & Staff: 7,883

- **ON CAMPUS HOUSING**  
(4,470 TOTAL BEDS)
- **OFF CAMPUS HOUSING**  
(2,520 TOTAL BEDS)  
\*Assumes 2 beds per unit
- **10K STUDENTS LIVING IN OFF CAMPUS NEIGHBORHOODS**
- **TEMPLE DEVELOPMENTS**

**AVERAGE WEEKDAY RIDERSHIP**

Cecil B Moore/ Temple: 7,222  
Susquehanna-Dauphin: 2,951  
Temple RR: 4,943  
Fairmount: 1,776

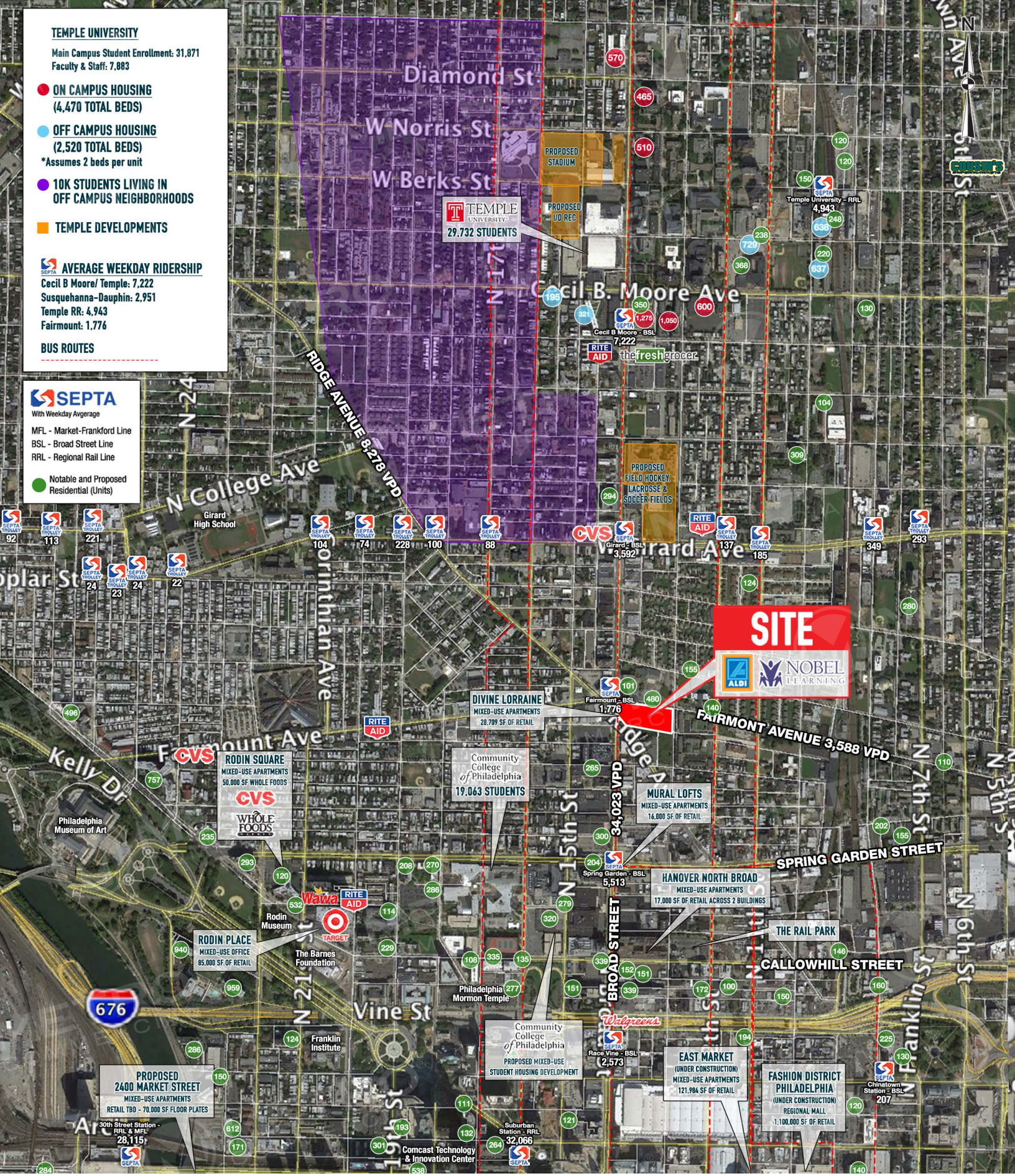
**BUS ROUTES**



With Weekday Average

MFL - Market-Frankford Line  
BSL - Broad Street Line  
RRL - Regional Rail Line

● Notable and Proposed Residential (Units)



The information and images contained herein are from sources deemed reliable. However, Metro Commercial Real Estate, Inc. makes no representation whatsoever as to their accuracy or authenticity. Images shown may be modified for illustrative purposes. Images may be out-of-date and not current. 7.2.19

**1300 FAIRMOUNT AVENUE  
PHILADELPHIA, PA**

