

FOR LEASE | FLETCHER PLAZA

Last Space Available ±2,400 SF · NWC Fletcher Pkwy & HWY 67, El Cajon, California

Join these Tenants: CVS, The Home Depot, Target, Big 5 Sporting Goods, Sears, Dick's, Macy's, Walmart, JCPenney, Office Depot, Best Buy, HomeGoods, and more



B R I X T O N



FEATURES

- Redevelopment
- Located at the corner of Fletcher Pkwy & 67 Freeway
- Across the street from Parkway Plaza Mall
- Freeway proximity provides regional exposure
- Outstanding location for high quality users

DEMOGRAPHICS

	1 Mile	3 Mile	5 Mile
2018 Population:	23,727	165,000	343,744
2022 Proj Pop:	24,699	171,331	357,119
Daytime Pop:	33,256	163,101	300,750
Avg HH Income:	\$55,459	\$75,561	\$86,568



DON MOSER

Lic.# 00821359

858.523.2087

dmoser@retailinsite.net

RAQUEL LAMAN

Lic.# 02073357

858.523.2086

rlaman@retailinsite.net

120 S SIERRA AVE, STE 110, SOLANA BEACH, CA 92075 | LIC # 01206760 | T: 858 523 2090 | RETAILINSITE.NET

MEMBERS OF
CHAINLINKS
RETAIL ADVISORS

The information above has been obtained from sources believed to be reliable. While we do not doubt its accuracy, we have not verified it and make no guarantee, warranty or representation about it. It is your responsibility to independently confirm its accuracy and completeness. Any projections, opinions, assumptions or estimates used are for example only and do not represent the current or future performance of the property. The value of this transaction to you depends on tax and other factors which should be evaluated by your tax, financial and legal advisors. You and your advisors should conduct a careful, independent investigation of the property to determine to your satisfaction the suitability of the property for your needs.

FOR LEASE | FLETCHER PLAZA

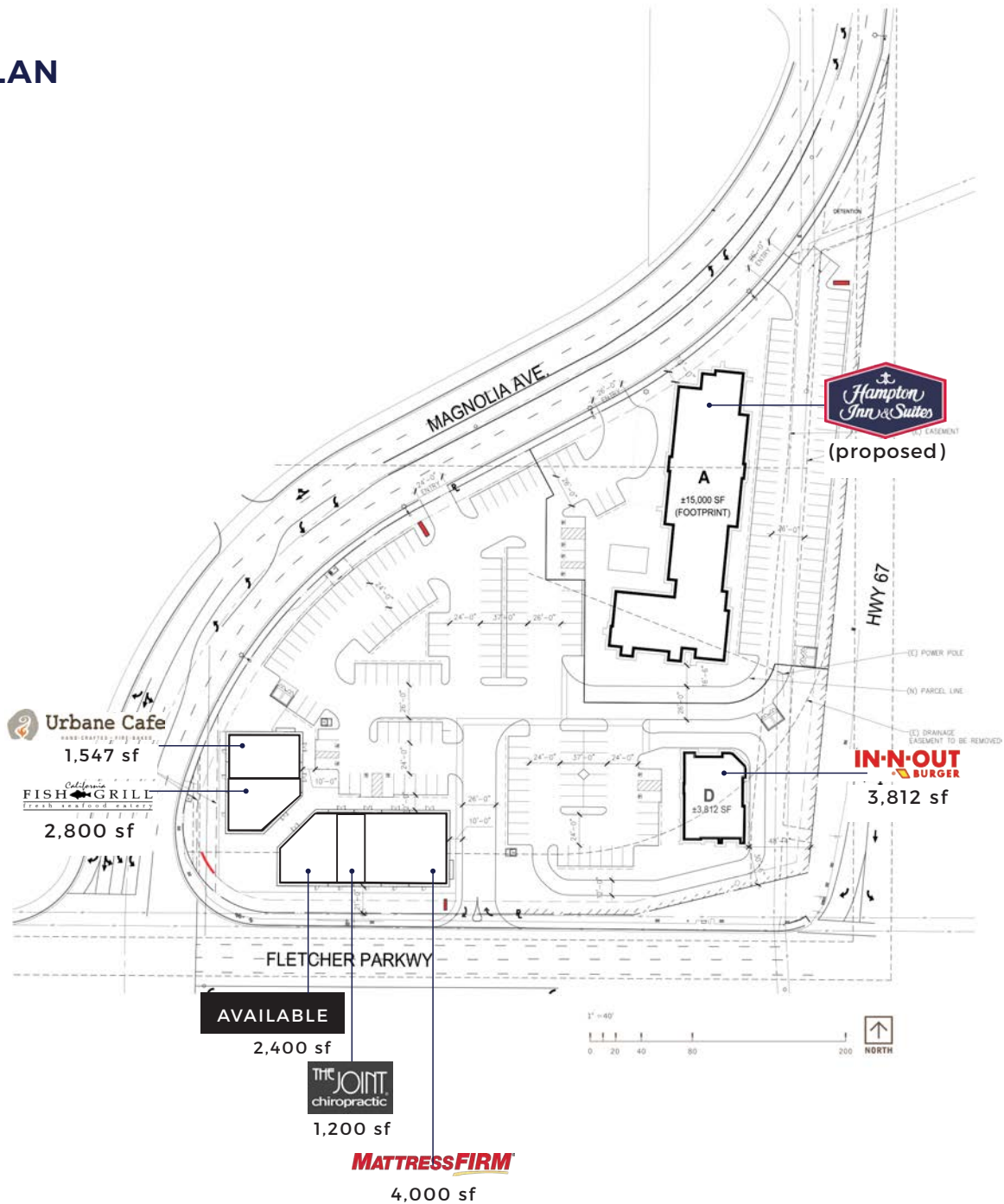
Last Space Available ±2,400 SF · NWC Fletcher Pkwy & HWY 67, El Cajon, California

Join these Tenants: CVS, The Home Depot, Target, Big 5 Sporting Goods, Sears, Dick's, Macy's, Walmart, JCPenney, Office Depot, Best Buy, HomeGoods, and more



B R I X T O N

SITE PLAN



RI RETAIL INSITE

DON MOSER

Lic.# 00821359

858.523.2087

dmoser@retailinsite.net

RAQUEL LAMAN

Lic.# 02073357

858.523.2086

rlaman@retailinsite.net

120 S SIERRA AVE, STE 110, SOLANA BEACH, CA 92075 | LIC # 01206760 | T: 858 523 2090 | RETAILINSITE.NET

MEMBERS OF
CHAINLINKS
RETAIL ADVISORS

The information above has been obtained from sources believed to be reliable. While we do not doubt its accuracy, we have not verified it and make no guarantee, warranty or representation about it. It is your responsibility to independently confirm its accuracy and completeness. Any projections, opinions, assumptions or estimates used are for example only and do not represent the current or future performance of the property. The value of this transaction to you depends on tax and other factors which should be evaluated by your tax, financial and legal advisors. You and your advisors should conduct a careful, independent investigation of the property to determine to your satisfaction the suitability of the property for your needs.

Expanded Demographic Profile

ESTIMATED 2018 • CALCULATED USING PROPORTIONAL BLOCK GROUPS

Fletcher Plaza

Rings: 1, 3, 5 mile radii



POPULATION

	1 mile	3 miles	5 miles
Total Population	23,727	165,000	343,744
Projected Population (2022)	24,699	171,331	357,119



HOUSING

Total Households	8,920	57,942	126,203
Projected Total Households (2022)	9,255	59,969	130,800



INCOME

Median Household Income	\$43,387	\$55,301	\$64,511
Average Household Income	\$55,459	\$75,561	\$86,568
Per Capita Income	\$21,062	\$27,407	\$32,353
Median Disposable Income	\$37,518	\$46,617	\$53,272
Average Disposable Income	\$46,207	\$59,518	\$66,824



DAYTIME DEMOS

Total Daytime Population	33,256	163,101	300,750
Daytime Population Workers	20,419	70,380	115,337
Daytime Population Residents	12,837	92,721	185,413



RACE & ETHNICITY

White	13,309 56.09%	114,659 69.49%	252,233 73.38%
Black or African American	2,548 10.74%	9,563 5.80%	17,596 5.12%
American Indian & Alaska Native Population	206 0.87%	1,276 0.77%	2,540 0.74%
Asian Population	1,052 4.43%	6,544 3.97%	14,256 4.15%
Pacific Islander Population	151 0.64%	841 0.51%	1,703 0.50%
Other Race Population	4,468 18.83%	20,082 12.17%	32,272 9.39%
Population of Two or More Races	1,993 8.40%	12,035 7.29%	23,144 6.73%
Hispanic Population	8,724 36.77%	46,963 28.46%	83,260 24.22%
Non-Hispanic Population	15,003 63.23%	118,037 71.54%	260,484 75.78%



EDUCATION

Bachelor's Degree	1,975 13.30%	17,531 15.87%	44,663 18.77%
Graduate/Professional Degree	442 2.98%	8,485 7.68%	24,652 10.36%



AGE

Median Age	30.9	35.7	38.0
------------	------	------	------

Demographics produced using private and government sources deemed to be reliable. The information herein is provided without representation or warranty. Additional information available upon request.

