

BAKER SQUARE

415 Baker Blvd.
Tukwila, WA 98188

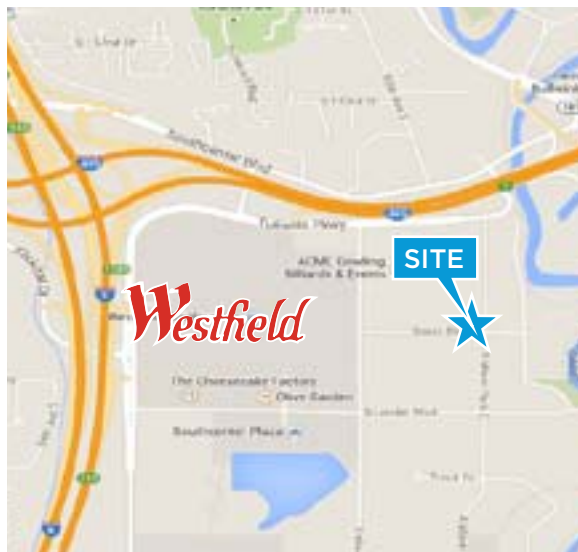
RETAIL / OFFICE BUILDING

PROPERTY HIGHLIGHTS

- > Call for rates
- > Short term leases
- > High visibility corner
- > Building signage available
- > Ample free parking
- > Separate exterior entrance
- > Ground floor - great for retail, medical or office uses
- > CBA Listing ID# 547393



Located one block east of Westfield Southcenter Mall, Baker Square is a highly visible professional Retail/Office Building with a strategic location providing immediate access to I-405 and I-5. Baker Square has excellent parking, accessibility and is in close proximity to heavy retail services. Designated under the Tukwila Urban Center zoning, Baker Square will sit on the "50 yard line" of the main thoroughfare connecting Westfield Southcenter Mall to the new Sounder Transit Station. **Tenant Mix includes: The Andover Company and Terra Staffing.**



LEASING CONTACTS

TYLER J. ABBOTT
206-533-5096
tabbott@iwcre.com

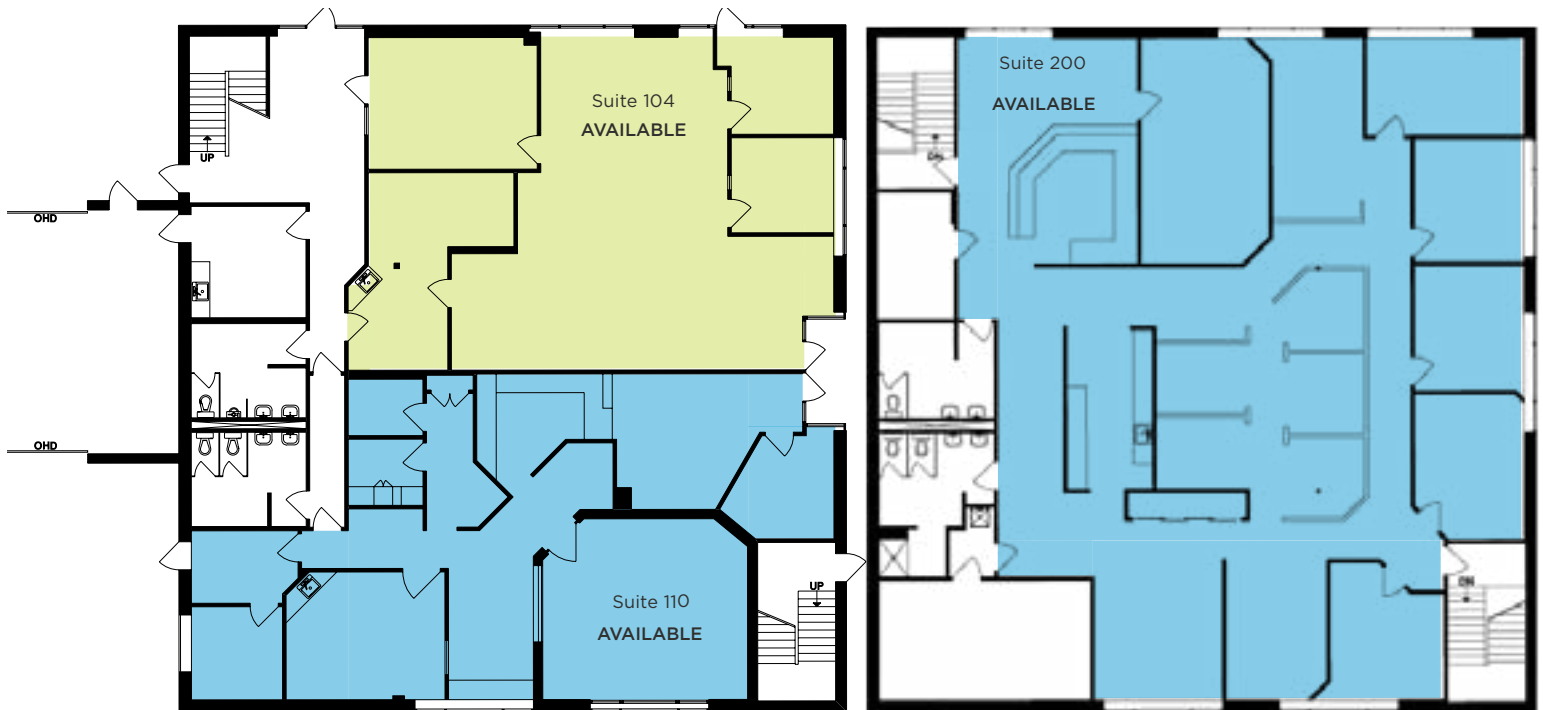
MICHELLE S. ABBOTT
206-533-5094
mabbott@iwcre.com



BAKER SQUARE

415 Baker Blvd.
Tukwila, WA 98188

OFFICE SPACE PLAN - 1st & 2nd floor



CONTACTS

TYLER J. ABBOTT
206-533-5096
tabbott@iwcre.com

MICHELLE S. ABBOTT
206-533-5094
mabbott@iwcre.com

BAKER SQUARE

415 Baker Blvd.
Tukwila, WA 98188



2015 CoStar DEMOGRAPHICS

	1 Mile	3 Mile	5 Mile
> Estimated Population	3,895	79,393	279,184
> Daytime Employment	18,663	85,493	148,856
> Average Household Income	\$53,098	\$65,713	\$72,437

