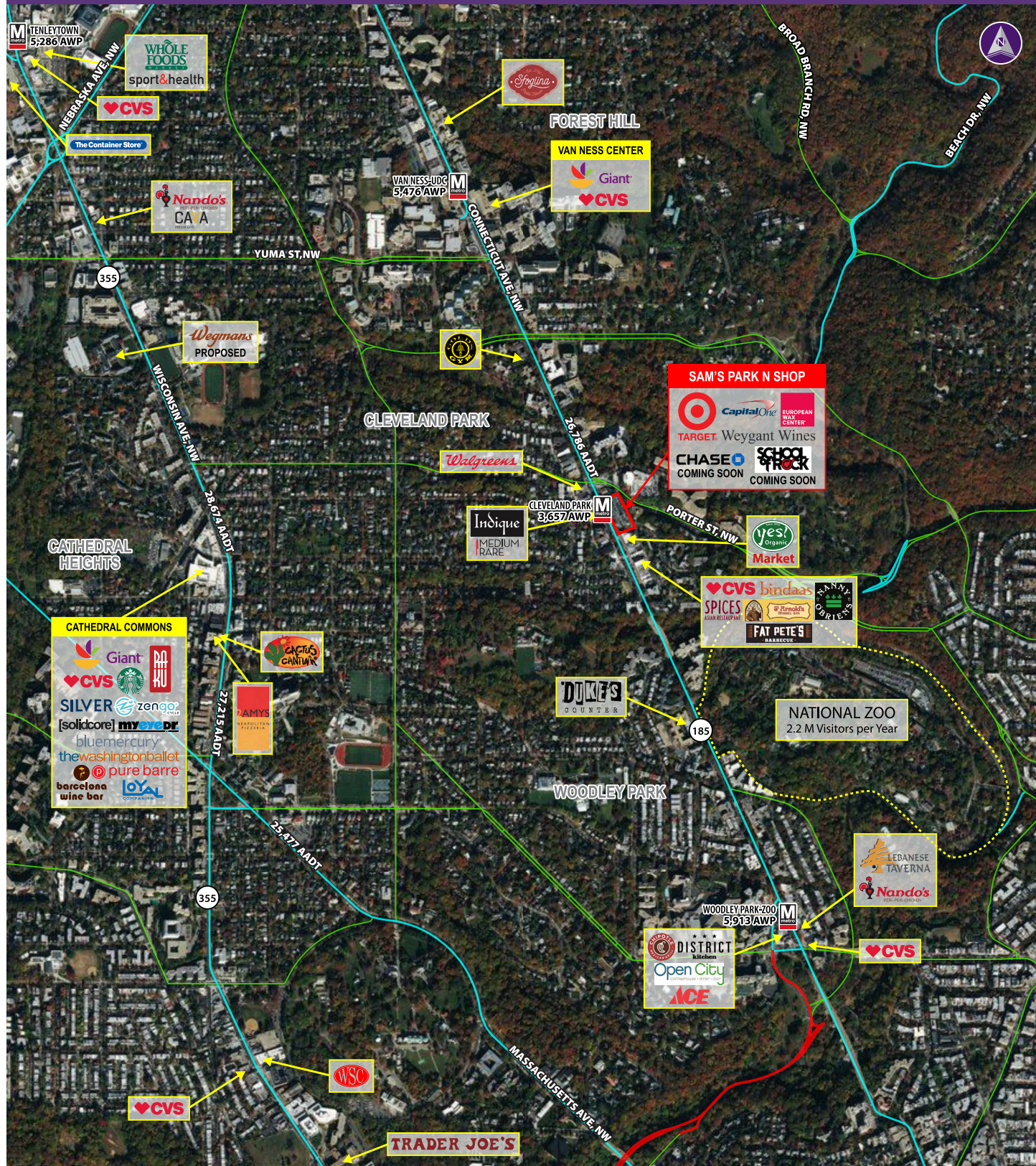


SAM'S PARK & SHOP ■ WASHINGTON, DC



Information herein has been obtained from sources believed to be reliable. While we do not doubt its accuracy, we have not verified it and make no guarantee, warranty or representation about it. Independent confirmation of its accuracy and completeness is your responsibility. H&R Retail, Inc.

Sam's Park & Shop

3529 CONNECTICUT AVENUE, NW | WASHINGTON, DC 20008

2ND GENERATION RESTAURANT SPACE AVAILABLE



Property Highlights

- 51 exclusive parking spaces with 30 minutes free validated parking
- Shopping Center attached to Cleveland Park Metro - Redline 3,657 travelers daily.
- Strong Upper NW DC Neighborhood with incomes over \$180,000

Demographics (2019 Estimated)

	.5 Mile	1 Mile	1.5 Mile
Population	9,368	31,934	97,592
Average HH Income	\$180,070	\$177,268	\$156,945
Daytime Population	6,327	29,243	85,551

Please Contact

Bradley A. Buslik

240.482.3609 (direct)
301.656.3030 (office)
bbuslik@hrretail.com

Sebastian P. Restifo

240.482.3602 (direct)
301.656.3030 (office)
srestifo@hrretail.com



SAM'S PARK & SHOP ■ WASHINGTON, DC

