

1,110 - 1,847 SF FOR LEASE

OCEANSIDE COMMERCE CENTER

4747 - 4751 Oceanside Blvd. & 1818 - 1820 Peacock Blvd. - Oceanside, CA 92056

PROPERTY DETAILS

- Industrial space for lease
- Frontage on Oceanside Blvd.
- 3 phase power
- Skylights & grade level loading doors in all suites
- New exterior features & landscaping
- Climate controlled office improvements
- Located in close proximity to public transit
- New signage program
- **LEASE RATE: \$1.40/SF + CAM (\$0.20/SF)**



For more info contact: Whitney Robinson | whitney@rafpg.com | (858) 314-3116 ext. 107



1,110 - 1,847 SF FOR LEASE

4747 - 4751 Oceanside Blvd. & 1818 - 1820 Peacock Blvd.

SITE PLAN & AVAILABILITY CHART

Address	Suite	SF	Base Rent	CAM	Availability
1820 Peacock Ave.	F	1,110 SF	\$1.40/SF	\$0.20/SF	9/1/2022
4751 Oceanside Blvd.	G	1,847 SF	\$1.40/SF	\$0.20/SF	8/1/2022



For more info contact: Whitney Robinson | whitney@rafpg.com | (858) 314-3116 ext. 107

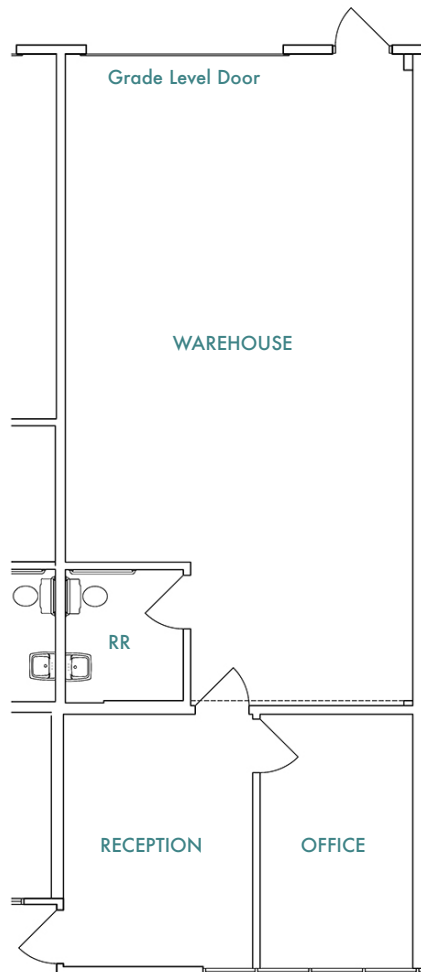
No warranty or representation is made to the accuracy of the foregoing information. Terms of sale or lease and availability are subject to change or withdrawal without notice. Any of the foregoing information will need to be separately verified by the buyer or tenant.



1,110 - 1,847 SF FOR LEASE

4747 - 4751 Oceanside Blvd. & 1818 - 1820 Peacock Blvd.

FLOOR PLAN
Suite F



SUITE DESCRIPTION

Building Address: 1820 Peacock Ave.

Suite: F

Square Feet: 1,110 SF

Lease Rate: \$1.40/SF + CAM (\$0.20/SF)

Comments: Reception, Office, Restroom, and Warehouse with 1 Grade Level Door

Availability: 9/1/2022

For more info contact: Whitney Robinson | whitney@rafpg.com | (858) 314-3116 ext. 107

No warranty or representation is made to the accuracy of the foregoing information. Terms of sale or lease and availability are subject to change or withdrawal without notice. Any of the foregoing information will need to be separately verified by the buyer or tenant.



1,110 - 1,847 SF FOR LEASE

4747 - 4751 Oceanside Blvd. & 1818 - 1820 Peacock Blvd.

FLOOR PLAN
Suite G



SUITE DESCRIPTION

Building Address: 4751 Oceanside Blvd.

Suite: G

Square Feet: 1,847 SF

Lease Rate: \$1.40/SF + CAM (\$0.20/SF)

Comments: Reception, 2 Offices, Restroom, and Warehouse

Availability: 8/1/2022

For more info contact: Whitney Robinson | whitney@rafpg.com | (858) 314-3116 ext. 107

No warranty or representation is made to the accuracy of the foregoing information. Terms of sale or lease and availability are subject to change or withdrawal without notice. Any of the foregoing information will need to be separately verified by the buyer or tenant.



1,110 - 1,847 SF FOR LEASE

4747 - 4751 Oceanside Blvd. & 1818 - 1820 Peacock Blvd.

AERIAL PHOTOS



For more info contact: Whitney Robinson | whitney@rafpg.com | (858) 314-3116 ext. 107

No warranty or representation is made to the accuracy of the foregoing information. Terms of sale or lease and availability are subject to change or withdrawal without notice. Any of the foregoing information will need to be separately verified by the buyer or tenant.