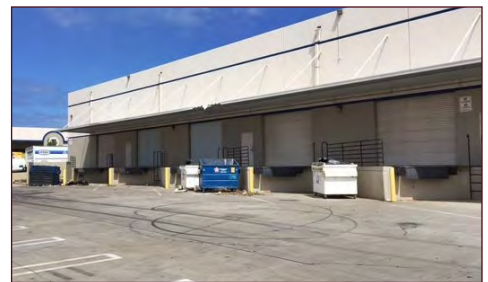


# FOR SUBLEASE - 14,889 SF RANCHO ANITA BUSINESS PARK

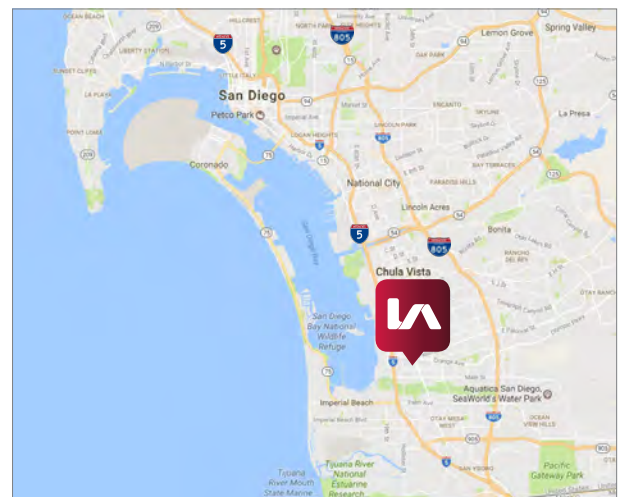
1616 INDUSTRIAL BLVD, STE 104 & 105 - CHULA VISTA



## LISTING DATA

- Sublease Expiration is April 30, 2018
- 21' – 25' Clear Height
- 5% Office
- 3 Dock-High Doors
- 5 Grade Level Doors
- Available now

**LEASE RATE: \$.68/SF NNN (NNN = \$.16/SF)**



Alex Weiss  
aweiss@lee-associates.com  
D 760.448.1378  
CalBRE Lic#01893865

Greg Pieratt, SIOR  
gpieratt@lee-associates.com  
D 760.929.7837  
CalBRE Lic#01438576

All information furnished regarding property for sale, rental or financing is from sources deemed reliable, but no warranty or representation is made to the accuracy thereof and same is submitted to errors, omissions, change of price, rental or other conditions prior to sale, lease or financing or withdrawal without notice. No liability of any kind is to be imposed on the broker herein.

# FOR SUBLEASE - 14,889 SF RANCHO ANITA BUSINESS PARK

1616 INDUSTRIAL BLVD, STE 104 & 105 - CHULA VISTA



Alex Weiss  
aweiss@lee-associates.com  
D 760.448.1378  
CalBRE Lic#01893865

Greg Pieratt, SIOR  
gpieratt@lee-associates.com  
D 760.929.7837  
CalBRE Lic#01438576

All information furnished regarding property for sale, rental or financing is from sources deemed reliable, but no warranty or representation is made to the accuracy thereof and same is submitted to errors, omissions, change of price, rental or other conditions prior to sale, lease or financing or withdrawal without notice. No liability of any kind is to be imposed on the broker herein.